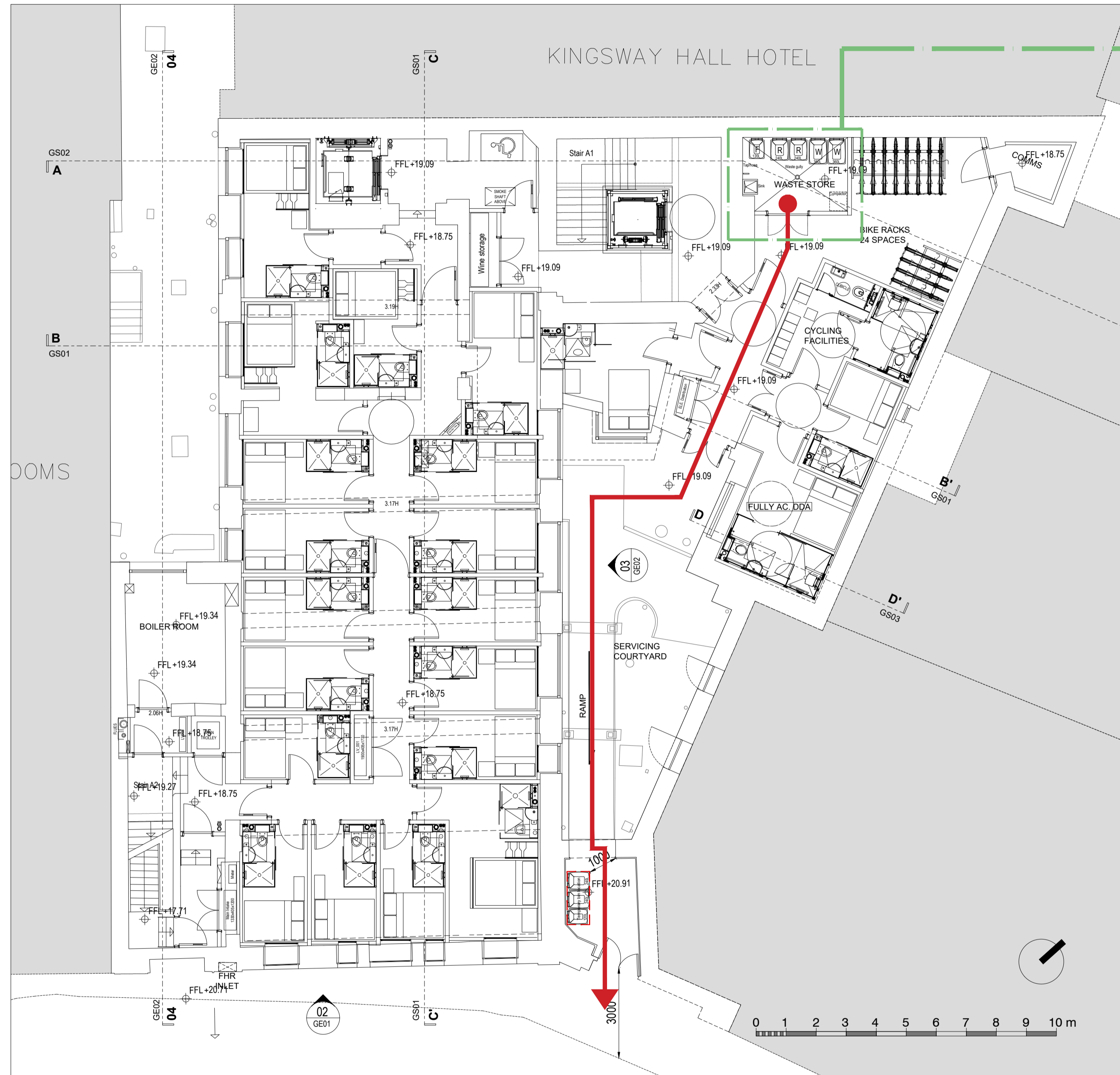


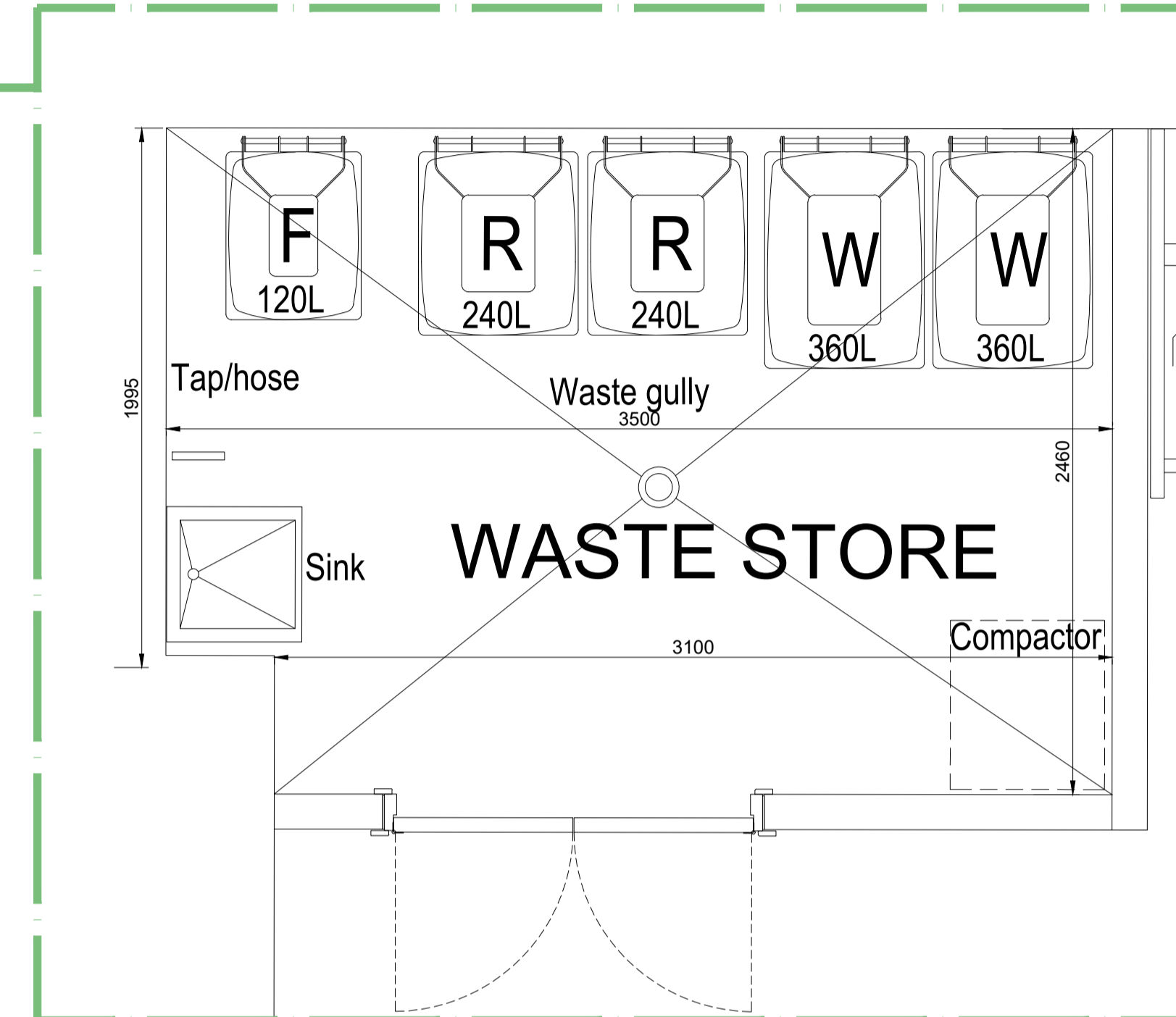
GENERAL NOTES

Do not scale from drawings.  
To be read in conjunction with all relevant Architects', Services and Structural Engineers' drawings.  
All dimensions to be checked on site.  
Errors to be reported immediately to the Architect.

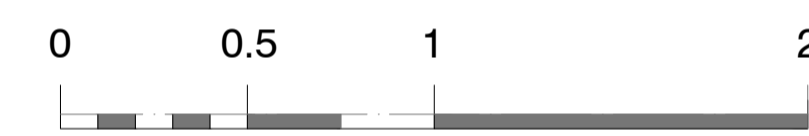
NOTE: Drawings based on outline survey from different sources



RF Waste store location  
01 Lower Ground Floor Plan



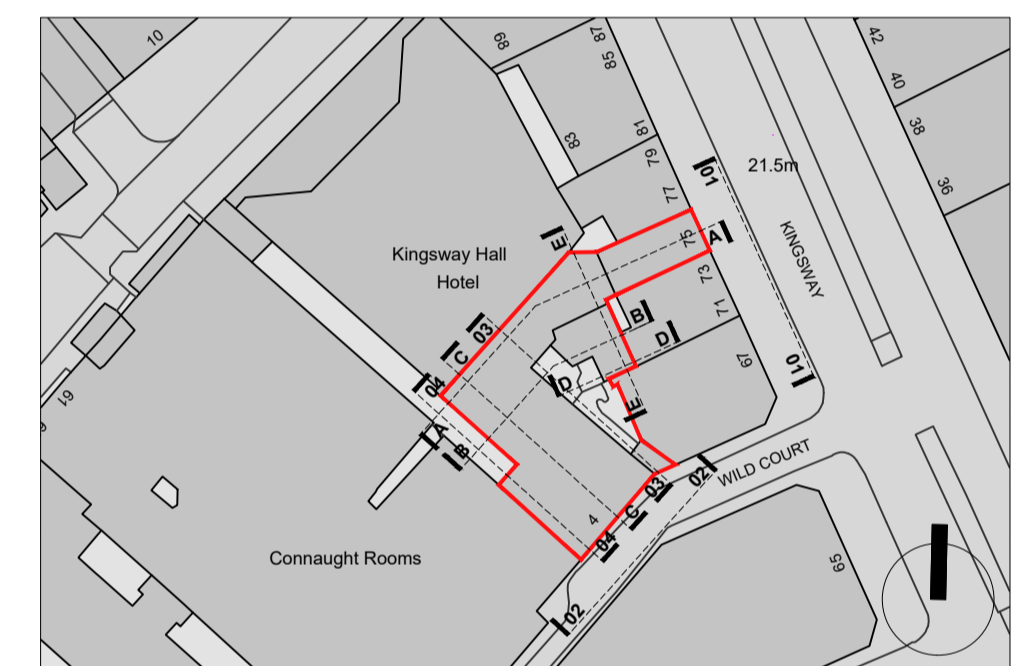
RF Waste store plan  
02 Lower Ground Floor Plan



Note:  
waste store 8.40 sqm provided with 0.2 sqm permanent mechanical ventilation

LEGEND

- exit route
- F** food waste
- R** mixed recycling
- W** general waste



Rev.	Date	Description	AG	PA
P1	15.10.2019	Issued for Information	AG	PA
			DB	CB

TT Architects

2 Eustace House  
Old Paradise Street  
London, SE11 6AN

Project  
**Z-WILD COURT**  
4 Wild Court & 75 Kingsway  
London  
WC2B 4AU

Client  
Z Hotels

Drawing Name  
Proposed Waste store

Date  
15.10.2019

Issue  
For information

Scale  
1:100 @ A1

Drawn/Checked  
PA/PA

Drawing No. & Revision

005-RF-P1