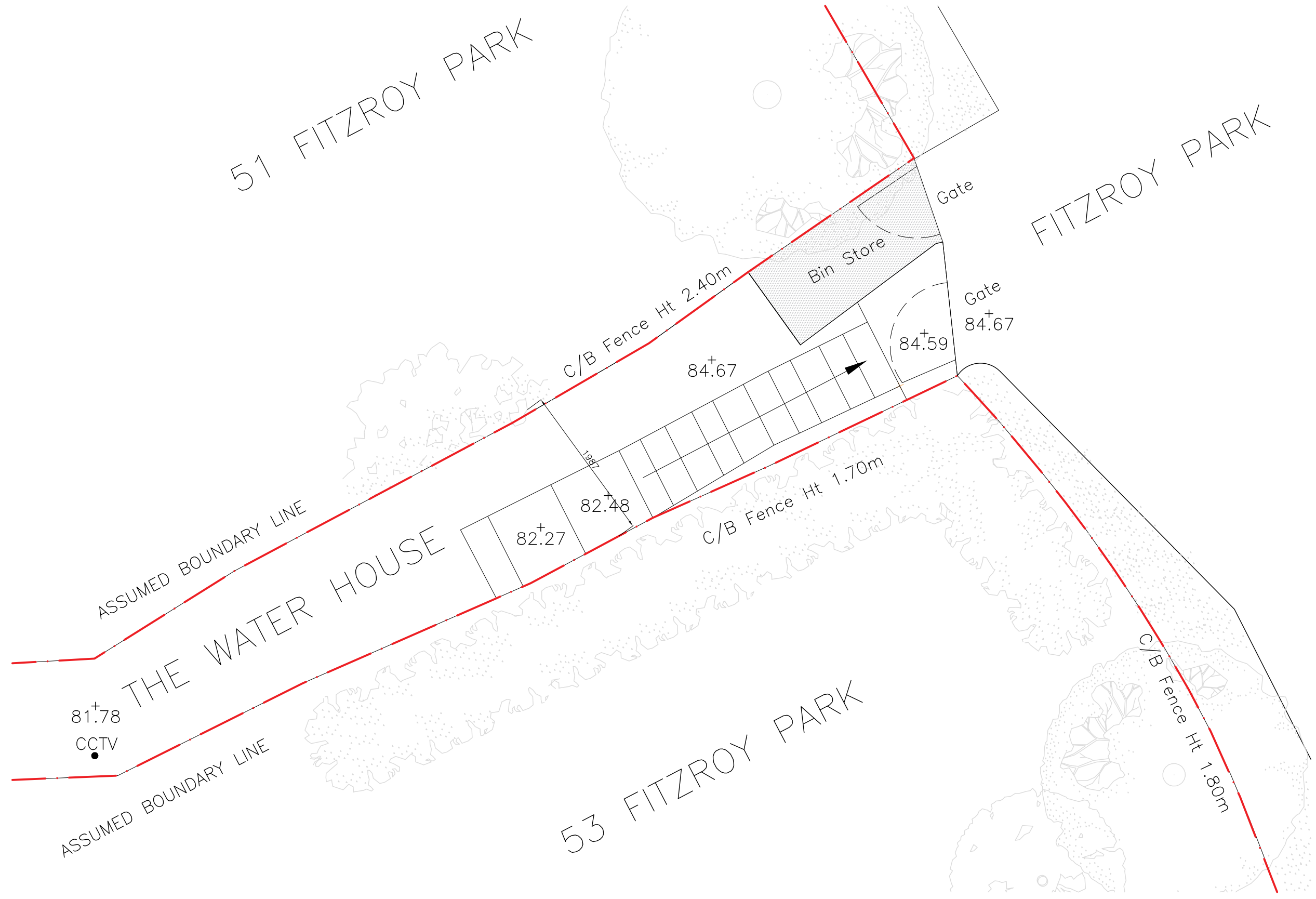
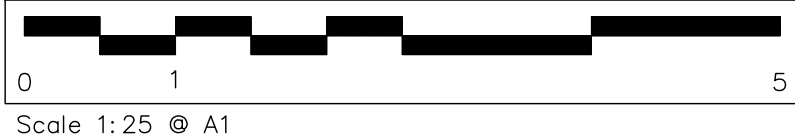


General notes:  
 This drawing is copyright of KSR architects. This drawing must be read in conjunction with the Designer's Risk Assessment, specification and all other relevant documentation and drawings.  
 KSR architects accept no liability for any expense, loss or damage of whatsoever nature and however arising from any variation made to this drawing or in the execution of the work to which it relates which has not been referred to them and their approval obtained.  
 Do not scale from this drawing or the digital data, only figured dimensions are to be used. For Planning refer to linear scale.  
 Check all dimensions on site prior to carrying out any works - advise any discrepancy  
 Notes/Legend



① Existing Plan – External Platform Lift  
 1 : 25 @ A1



A	Planning Application	18/04/19	Chkd
---	----------------------	----------	------

Rev	Description	Date	Chkd
-----	-------------	------	------

PLANNING  
 May Plan

**KSRARCHITECTS**  
 KSR Architects LLP  
 14 Darnley Street  
 London W1R 0ND  
 info@ksrarchitects.com  
 t +44 (0)20 7682 5000  
 www.ksrarchitects.com

Project:  
 THE WATER HOUSE

Title:  
 Existing Plan – External Platform Lift

Date: 17/04/19	Drawn By: CP	Checked: RM
----------------	--------------	-------------

Scale: 1:25 @ A1	Status: Planning
------------------	------------------

Project Ref: 17007	Drawing No: 17007-P003	Revision: A
--------------------	------------------------	-------------

51 FITZROY PARK

FITZROY PARK

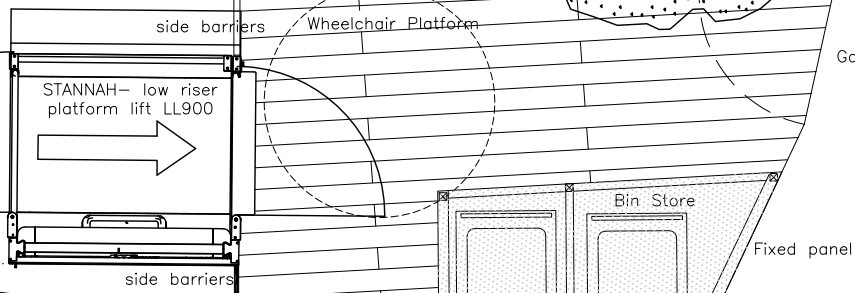
ASSUMED BOUNDARY LINE

existing panels to be extended as per agreement with no 51 FP, see section

3rd, 2nd fence panel aligned with the existing 1st

WATER HOUSE

ASSUMED BOUNDARY LINE



Height of the fence to match height on no 51 FP side.

53 Fitzroy Park Landscape  
Planting as per drawings submitted to Discharge Planning Condition associated with the Planning Permission (subject to 106)

53 FITZROY PARK

1 Proposed Plan - External Platform Lift 1:25 @ A1



Scale 1:25 @ A1

General notes:  
This drawing is copyright of KSR architects. This drawing must be read in conjunction with the Designer's Risk Assessment, specification and all other relevant documentation and drawings.  
KSR architects accept no liability for any expense, loss or damage of whatsoever nature and however arising from any variation made to this drawing or in the execution of the work to which it relates which has not been referred to them and their approval obtained.  
Do not scale from this drawing or the digital data, only figured dimensions are to be used. For Planning refer to linear scale.  
Check all dimensions on site prior to carrying out any works.  
advise any discrepancy

Notes/Legends

C	Further details added	19/08/2019	
B	Planning Application	28/08/19	
A	Planning Application	18/04/19	

Rev	Description	Date	Chkd
-----	-------------	------	------

KSR architects

PLANNING

May Plan

**KSRARCHITECTS**  
KSR Architects LLP  
14 Dovedale Street  
London W8H 0ND  
t +44 (0)20 7682 5000  
m ksr@ksrarchitects.com  
www.ksrarchitects.com

Project:  
THE WATER HOUSE

Title:  
Proposed Plan - External Platform Lift

Date: 17/04/19	Drawn By: CP	Checked: RM
----------------	--------------	-------------

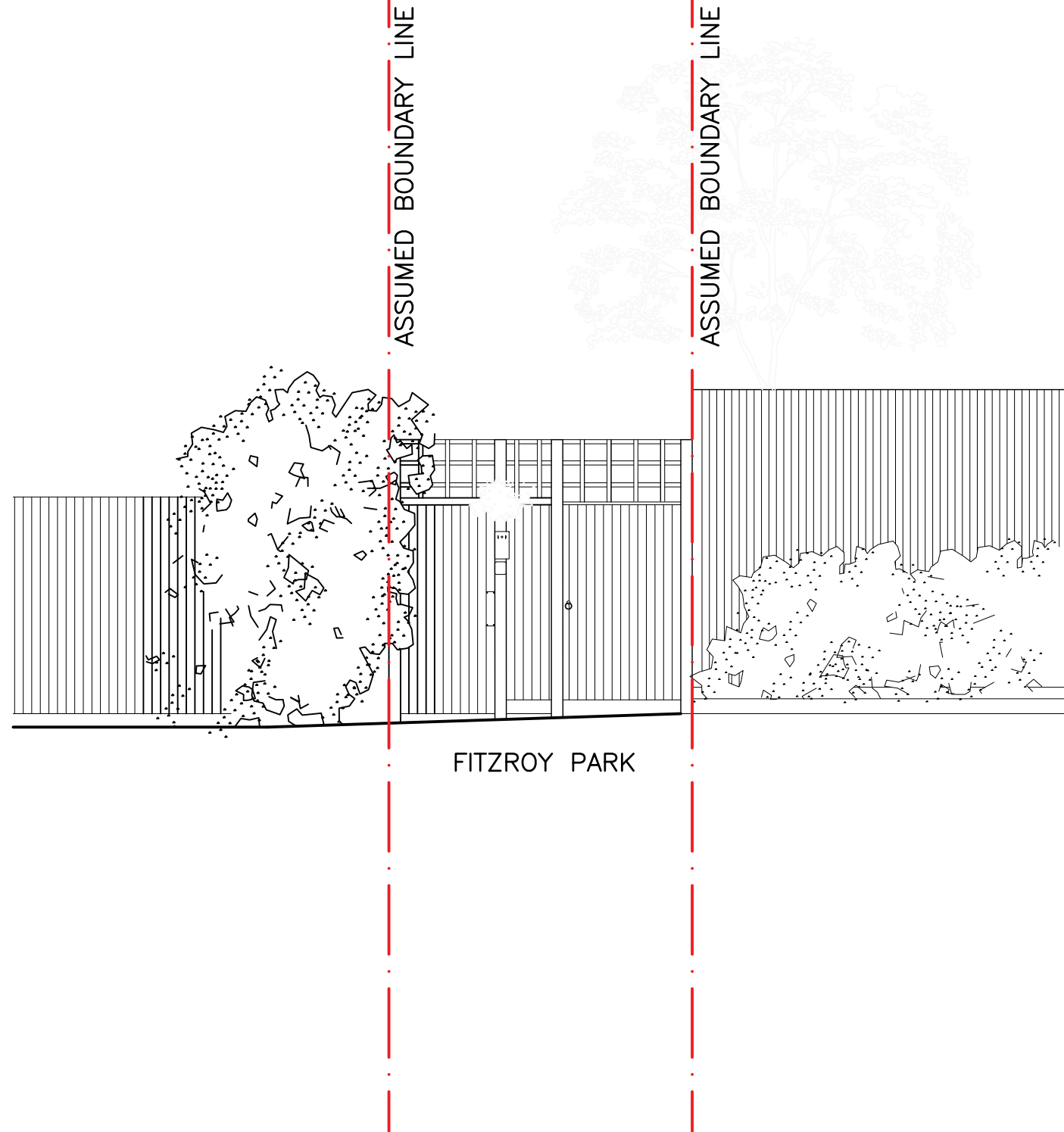
Scale: 1:25 @ A1	Status: Planning
------------------	------------------

Project Ref: 17007	Drawing No: 17007-P007	Revision: C
--------------------	------------------------	-------------

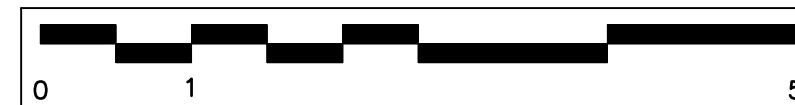
53 FITZROY PARK

THE WATER HOUSE

51 FITZROY PARK



1 Existing Elevation – External  
Platform Lift  
1: 25 @ A1



Scale 1: 25 @ A1

General notes:  
This drawing is copyright of KSR architects. This drawing must be read in conjunction with the Designer's Risk Assessment, specification and all other relevant documentation and drawings.  
KSR architects accept no liability for any expense, loss or damage of whatsoever nature and however arising from any variation made to this drawing or in the execution of the work to which it relates which has not been referred to them and their approval obtained.  
Do not scale from this drawing or the digital data, only figured dimensions are to be used. For Planning refer to linear scale.  
Check all dimensions on site prior to carrying out any works - advise any discrepancy  
Notes/Legends

B	Further Details added	20/09/19
A	Planning Application	18/04/19

Rev	Description	Date	Chkd
-----	-------------	------	------

KSR Architects

PLANNING

May  
Plan

**KSRARCHITECTS**  
KSR Architects LLP  
14 Grosvenor Street  
London W1R 0ND  
info@ksrarchitects.com  
t +44 (0)20 7682 5000  
www.ksrarchitects.com

Project:  
THE WATER HOUSE

Title:  
Existing Elevation –  
External Platform  
Lift

Date: 17/04/19	Drawn By: CP	Checked: RM
----------------	--------------	-------------

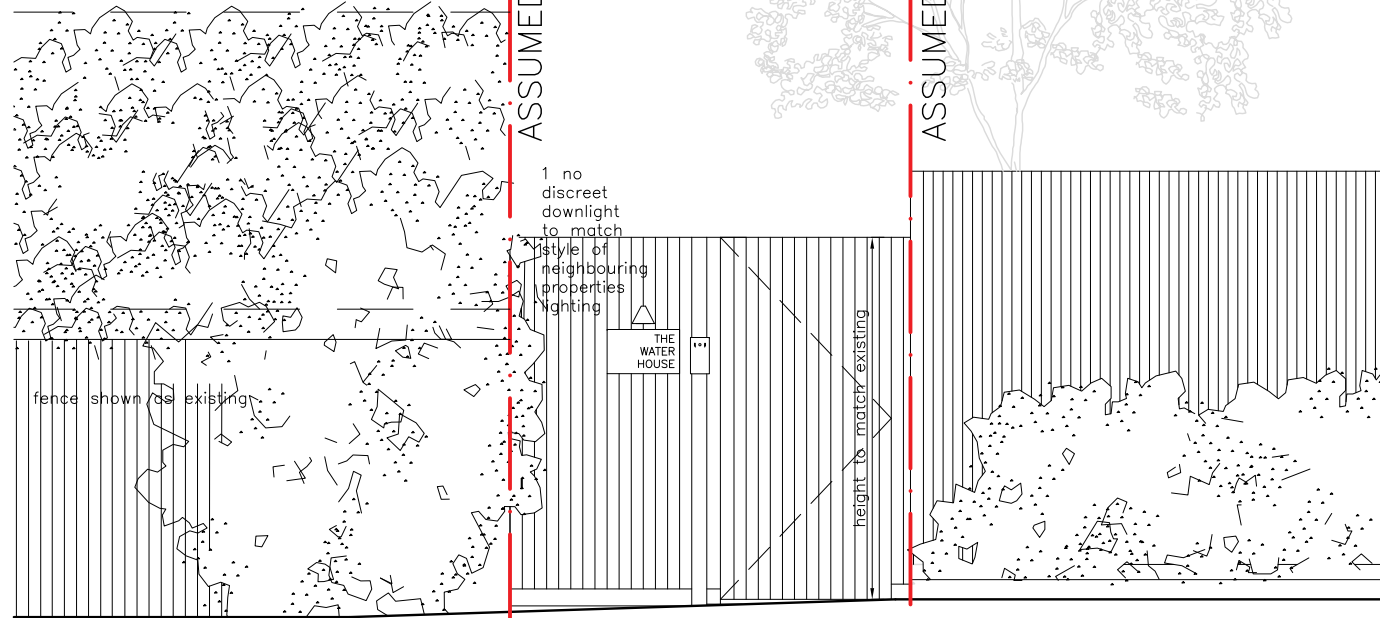
Scale: 1: 25 @ A1	Status: Planning
Project Ref: 17007	Drawing No: 17007-P005
	Revision: B

53 FITZROY PARK

THE WATER HOUSE

51 FITZROY PARK

53 Fitzroy Park Landscape  
Planting as per Planning drawings



1 Proposed Elevation – Gates  
1 : 25 @ A1



Scale 1:25 @ A1

**General notes:**  
 This drawing is copyright of KSR architects. This drawing must be read in conjunction with the Designer's Risk Assessment, specification and all other relevant documentation and drawings.  
 KSR architects accept no liability for any expense, loss or damage of whatsoever nature and however arising from any variation made to this drawing or in the execution of the work to which it relates which has not been referred to them and their approval obtained.  
 Do not scale from this drawing or the digital data, only figured dimensions are to be used. For Planning refer to linear scale.  
 Check all dimensions on site prior to carrying out any works – advise any discrepancy

Notes/Legends

D	letterbox omitted	18/10/19
C	1 light fitting omitted	07/10/19
B	Further details added	18/09/19
A	Planning Application	18/04/19

Rev	Description	Date	Chkd
-----	-------------	------	------

© KSR architects

PLANNING

Key Plan

**KSRARCHITECTS**

KSR Architects LLP  
14 Gower Street  
London WC1E 6BT

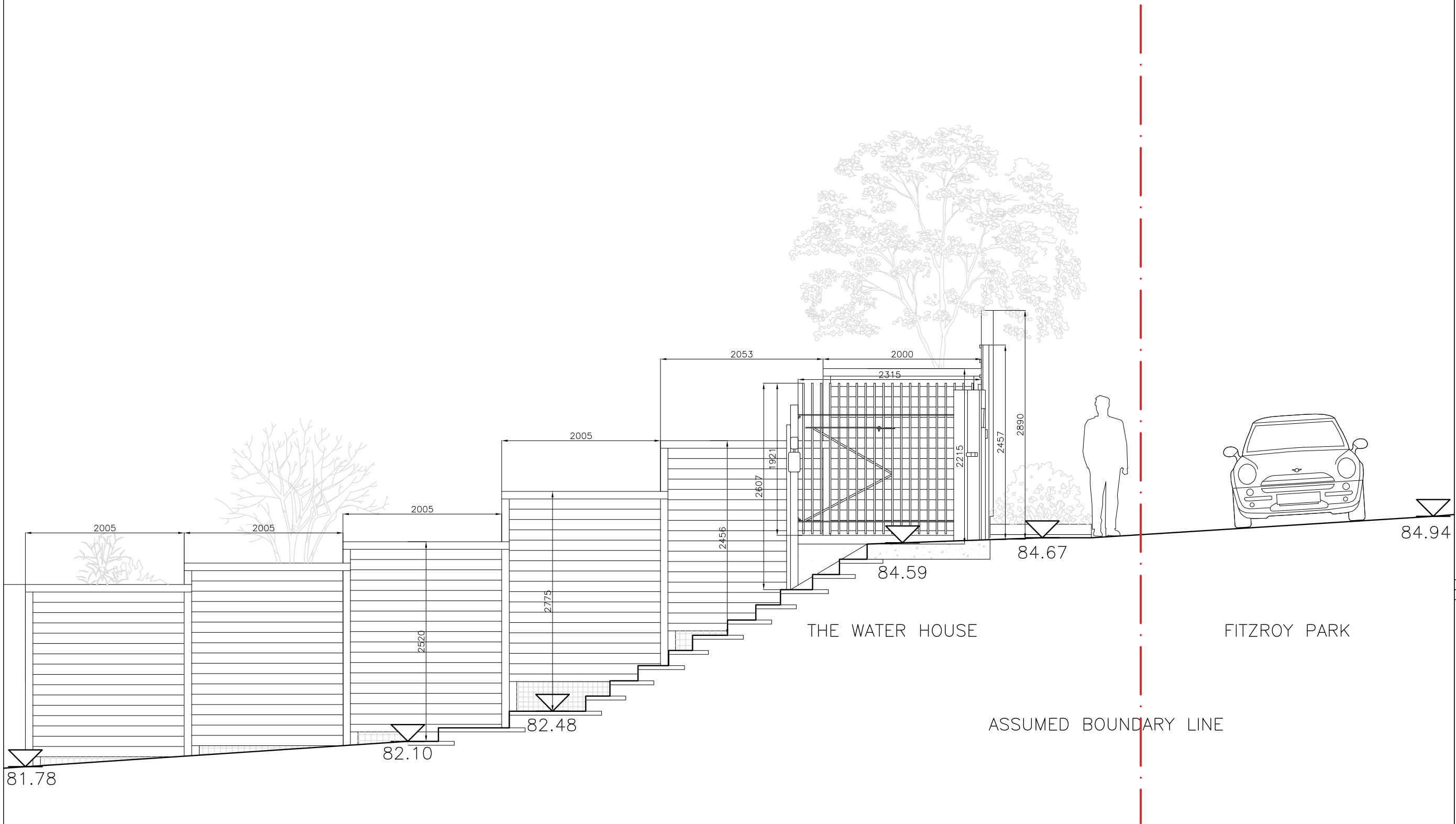
Project:  
THE WATER HOUSE

Title:  
Proposed Elevation –  
External Platform  
Lift

Date: 17/04/19	Drawn By: CP	Checked: RM
Scale: 1:25 @ A1 1:50 @ A3	Status: Planning	

Project Ref: 17007	Drawing No: 17007-P009	Revision: D
--------------------	------------------------	-------------

General notes:  
 This drawing is copyright of KSR architects. This drawing must be read in conjunction with the Designer's Risk Assessment, specification and all other relevant documentation and drawings.  
 KSR architects accept no liability for any expense, loss or damage of whatsoever nature and however arising from any variation made to this drawing or in the execution of the work to which it relates which has not been referred to them and their approval obtained.  
 Do not scale from this drawing or the digital data, only figured dimensions are to be used. For Planning refer to linear scale.  
 Check all dimensions on site prior to carrying out any works - advise any discrepancy  
 Notes/Legends



① Existing Section – External Platform Lift  
 1 : 25 @ A1



Scale 1:25 @ A1

A	Planning Application	18/04/19	
Rev	Description	Date	Chk

KSR Architects	PLANNING
May Plan	

**KSRARCHITECTS**  
 KSR Architects LLP  
 14 Grosvenor Street  
 London W1R 0ND  
 info@ksrarchitects.com  
 t: +44 (0)20 7682 5000  
 www.ksrarchitects.com

Project:  
 THE WATER HOUSE

Title:  
 Existing Section – External Platform Lift

Date: 17/04/19	Drawn By: CP	Checked: RM
----------------	--------------	-------------

Scale: 1:25 @ A1	Status: Planning
Project Ref: 17007	Drawing No: 17007-P004
	Revision: A

**General notes:**

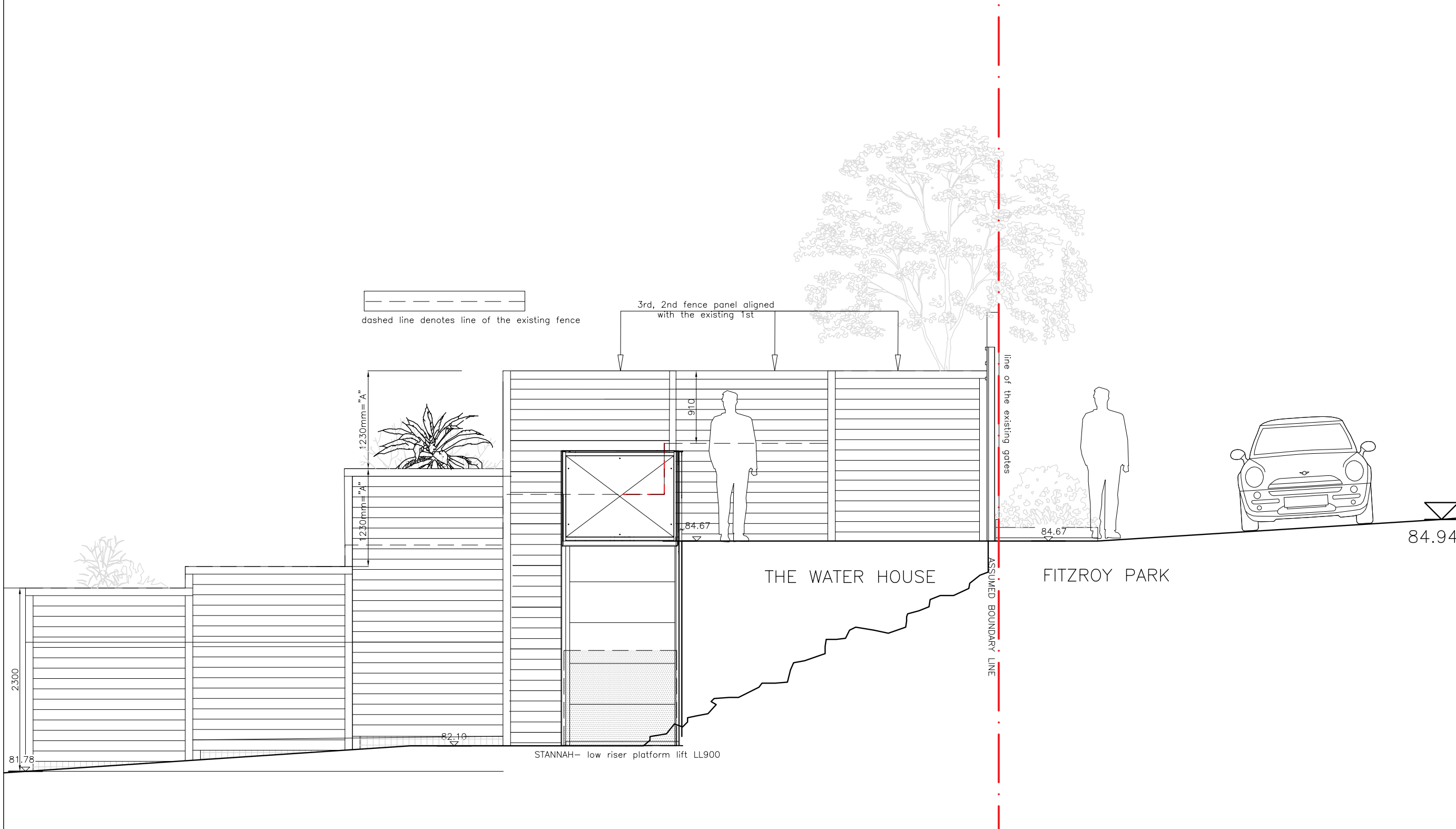
This drawing is copyright of KSR architects. This drawing must be read in conjunction with the Designer's Risk Assessment, specification and all other relevant documentation and drawings.

KSR architects accept no liability for any expense, loss or damage of whatsoever nature and however arising from any variation made to this drawing or in the execution of the work to which it relates which has not been referred to them and their approval obtained.

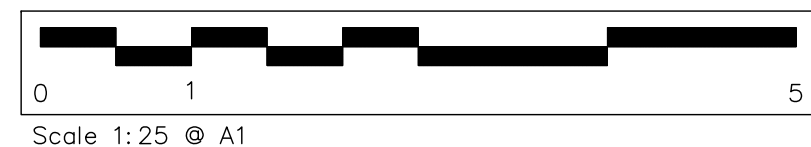
Do not scale from this drawing or the digital data, only figured dimensions are to be used. For Planning refer to linear scale.

Check all dimensions on site prior to carrying out any works – advise any discrepancy

Notes/Legends

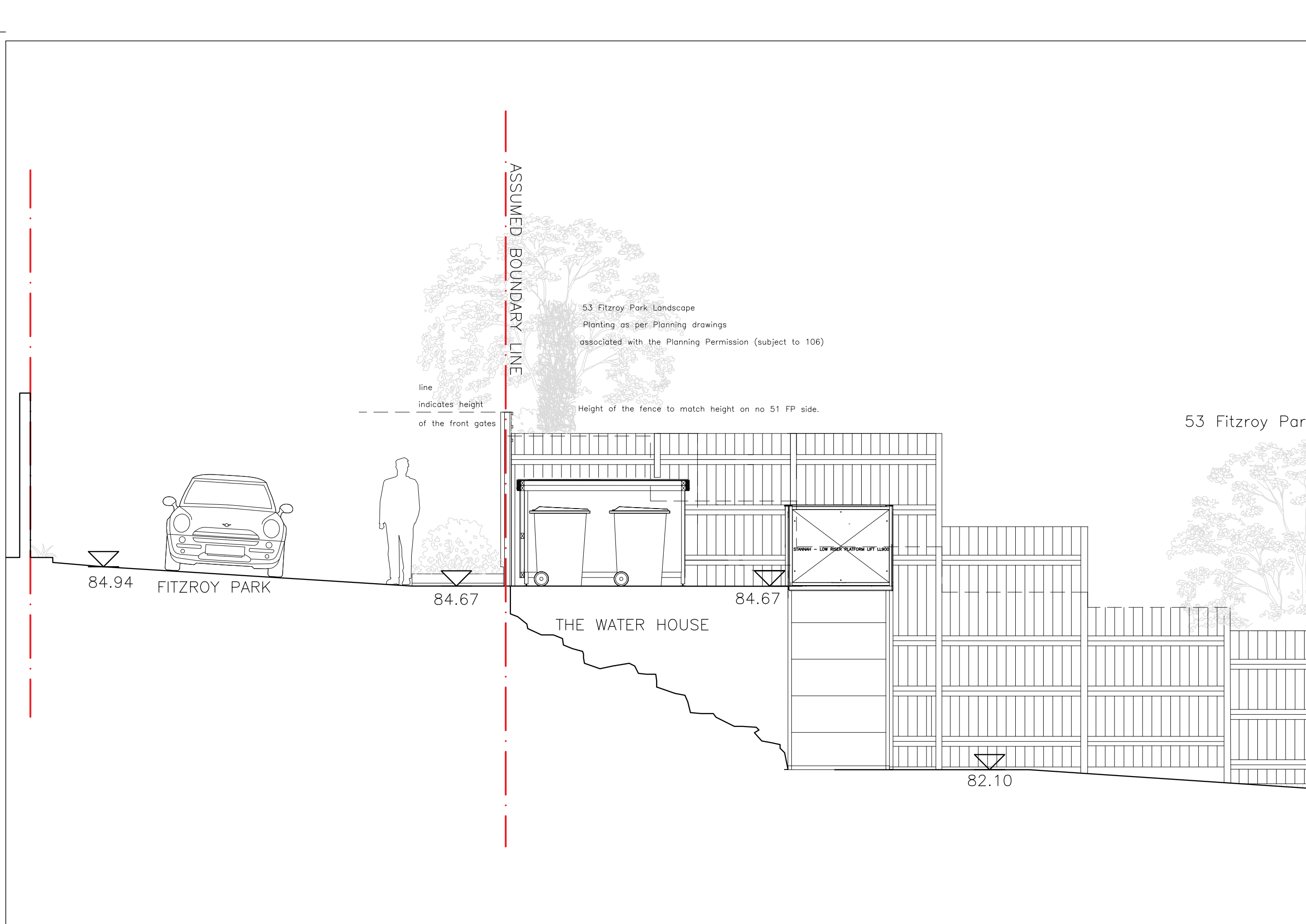


1 Proposed Section – External Platform Lift 1 : 25 @ A1



B	Planning Application	18/04/19	
A	Planning Application	18/04/19	
Rev	Description	Date	Chkd
	KSR Architects Stamp		
<b>PLANNING</b>			
Key Plan			
Project: THE WATER HOUSE			
Title: Proposed Section – External Platform Lift			
Date: 17/04/19	Drawn By: CP	Checked: RM	
Scale: 1:25 @ A1 1:50 @ A2	Status: Planning		
Project Ref: 17007	Drawing No: 17007-P008	Revision: B	

**KSRARCHITECTS**  
 KSR Architects LLP info@ksrarchitects.com  
 14 Grosvenor Street t: +44 (0)20 7882 5000  
 London W1R 0ND www.ksrarchitects.com



53 Fitzroy Park Landscape  
 Planting as per Planning drawings  
 associated with the Planning Permission (subject to 106)

line  
 indicates height  
 of the front gates

Height of the fence to match height on no 51 FP side.

53 Fitzroy Park

84.94

FITZROY PARK

84.67

84.67

THE WATER HOUSE

82.10

STANNAY - LOW RISER PLATFORM LIFT L1000

**General notes:**  
 This drawing is copyright of KSR architects. This drawing must be read in conjunction with the Designer's Risk Assessment, specification and all other relevant documentation and drawings.  
 KSR architects accept no liability for any expense, loss or damage of whatsoever nature and however arising from any variation made to this drawing or in the execution of the work to which it relates which has not been referred to them and their approval obtained.  
 Do not scale from this drawing or the digital data, only figured dimensions are to be used. For Planning refer to linear scale.  
 Check all dimensions on site prior to carrying out any works - advise any discrepancy  
**Notes/Legends**

A	Planning Application	19/09/19	
Rev	Description	Date	Child
	© KSR architects		

Stamp  
**PLANNING**

Key Plan

**KSRARCHITECTS**  
 KSR Architects LLP  
 14 Ginnerwell Street  
 London NW1 0ND  
 Email: info@ksrarchitects.com  
 T: +44 (0)20 7682 5000  
 www.ksrarchitects.com

Project:  
**THE WATER HOUSE**

Title:  
**Proposed Section - External Platform Lift - no 53 FP**

Date:	17/04/19	Drawn By:	CP	Checked:	RM
Scale:	1:25 @A1 1:50 @A3	Status:	Planning	Revision:	
Project Ref:	17007	Drawing No:	17007-P008A	Revision:	A



Scale 1:25 @ A1

1 Proposed Section - External Platform Lift 1:25 @ A1