

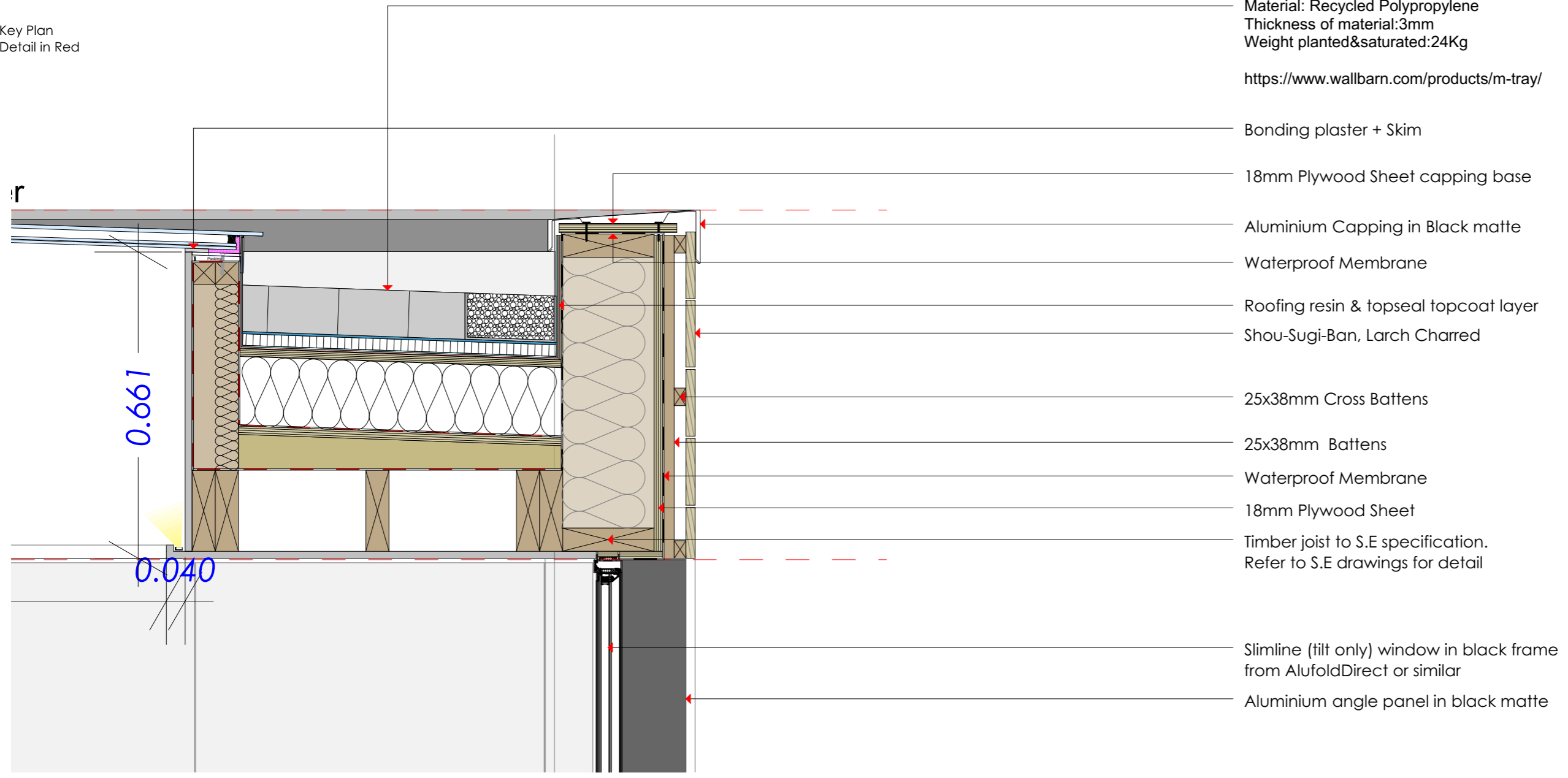
Key Plan
Detail in Red



Maintainance:
The sedum roof will be closely monitored by the occupants gardener and will be accessed via a ladder twice a year for maintainance purposes. Access to the flat roof will be via the second floor window.

Developed to accommodate sedum roof
Trays dimensions:
Height: 100mm
Width/breath: 500x500mm
Material: Recycled Polypropylene
Thickness of material:3mm
Weight planted&saturated:24Kg

<https://www.wallbarn.com/products/m-tray/>



- Bonding plaster + Skim
- 18mm Plywood Sheet capping base
- Aluminium Capping in Black matte
- Waterproof Membrane
- Roofing resin & topseal topcoat layer
- Shou-Sugi-Ban, Larch Charred
- 25x38mm Cross Battens
- 25x38mm Battens
- Waterproof Membrane
- 18mm Plywood Sheet
- Timber joist to S.E specification.
Refer to S.E drawings for detail
- Slimline (tilt only) window in black frame
from AlufoldDirect or similar
- Aluminium angle panel in black matte

CRAWFORD PARTNERSHIP
Architecture & Interior Design
a. 1a Muswell Hill
London, N10 3TH
t. 0208 444 2070
w. crawfordpartnership.co.uk

FF Extension Parapet Detail		SCALE: 1:10, 1:100 @ A3	REV:
PROJECT: 51 Alma Street, NW5 3DH	CLIENT: Isabel Berwick	Updated:	
DRAWING NO.: 03_402	STATUS: Planning Conditions Discharge		
DRAWN: AK	CHECKED: AC		

NOTES:
Report all errors and discrepancies promptly to architects before proceeding with the works. Do not scale from drawing.
Figured dimensions to be worked to in all cases.
The contractor is responsible for checking dimensions, tolerances and references. All structural information to be taken from the structural engineer's drawings.