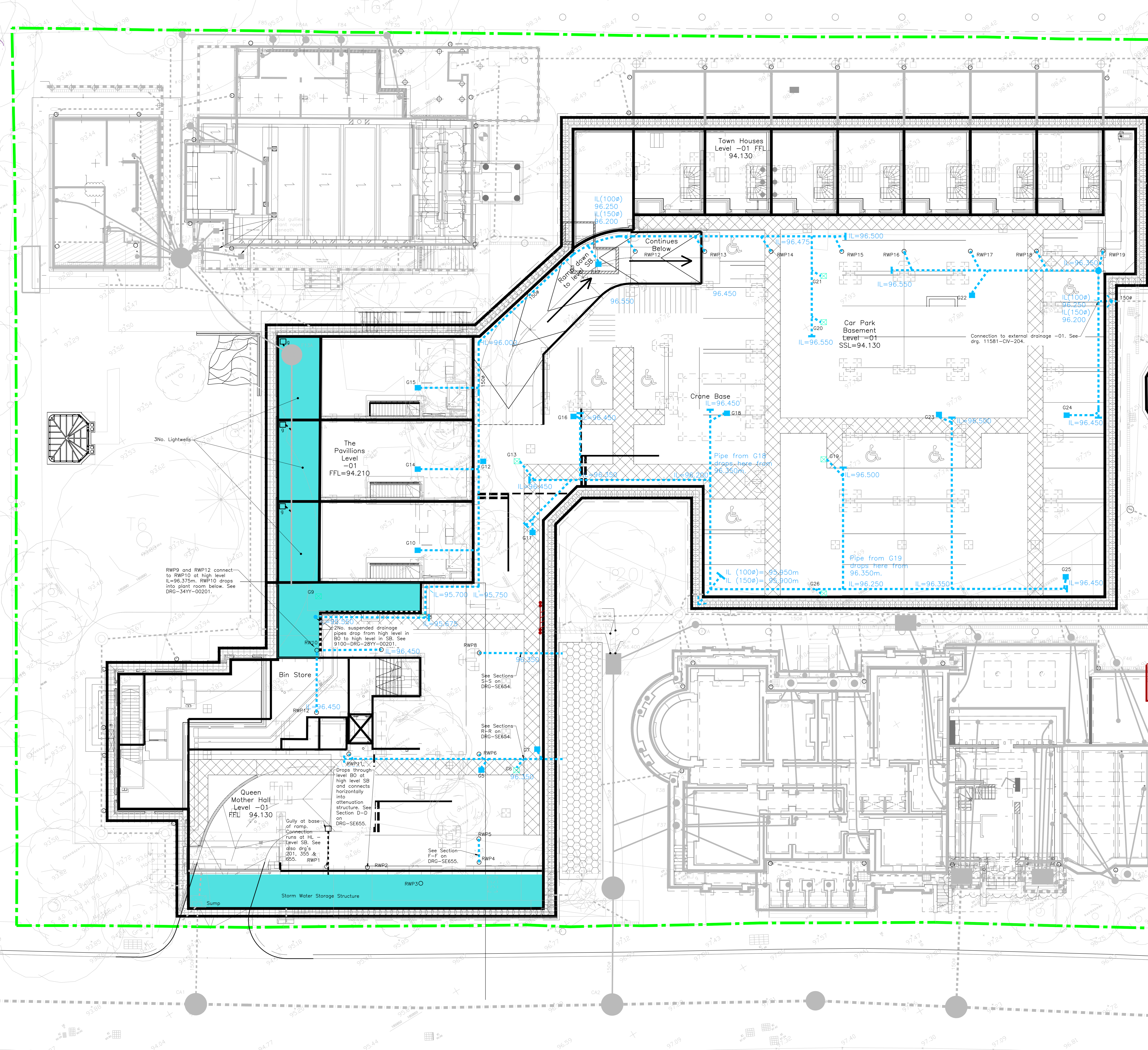
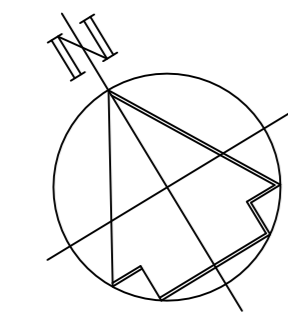


- Legend**
- Private Drainage Symbols**
- Suspended Drainage and invert levels - 100s unless otherwise stated.
  - Gully in living roof area and reference. See 9100-DRG-28YY-00204.
  - Rainwater downpipe and reference. See 9100-DRG-28YY-00204.
  - Pumped Rising Main
  - Site Boundary
  - External Area inside conting piling. See 9100-DRG-28YY-GF204
- Surface Water**
- IL 96.500
  - REF
  - REF
  - RWP1
  - Pumped Rising Main
  - Site Boundary
  - External Area inside conting piling. See 9100-DRG-28YY-GF204

**Proposed Internal Layouts**

Internal layouts shown are the latest that we have available to us. Where the information is available we have reflected the drainage point information and floor levels as shown. In other instances where level information is not available we have estimated the locations, number of drainage points and floor levels pending further clarification.



**General Notes**

- Any indication of site boundaries is to be considered diagrammatic. This Engineering Layout is based upon layouts prepared by Murphy and Subson Surveys. Tully De'Ath cannot be held responsible for any inaccuracies therein.
- The underlying topographic survey information has been provided by Murphy and Subson Surveys. Tully De'Ath cannot be held responsible for any inaccuracies therein.
- The Contractor shall check all levels and dimensions. Any errors or omissions are to be reported to the Engineer immediately.
- All information regarding below ground obstructions has been added to our general arrangement drawings as far as we are reasonably able to obtain at the time. The Contractor shall allow for breaking out obstructions where necessary and increasing the depth of foundations to a suitable and approved formation, in accordance with our details.

**Drawing Details and Related Drawings**

This drawing refers to the storm suspended drainage details within the Car Park, Queen Mother Hall and the Pavilions, Level B0.

**Related Drawings**

Drawing No:	9100-DRG-34YY-00201
Drawing Title:	Engineering Layout Sub-basement Level SB Western Section of Site
Drawing No:	9100-DRG-34YY-00202
Drawing Title:	Detailed Site Layout Eastern Section of Site
Drawing No:	9100-DRG-34YY-GF204
Drawing Title:	Engineering Layout External Areas Western Section of Site
Drawing No:	9100-SCH-240
Drawing Title:	Manhole Schedules
Drawing No:	9100-DRG-34YY-DE215
Drawing Title:	Engineering Layout External Areas Western Section of Site
Drawing No:	9100-DRG-34YY-SE654
Drawing Title:	Drainage Sections (QM & Kh)
Drawing No:	9100-DRG-34YY-SE655
Drawing Title:	Drainage Sections (QM)
Drawing No:	9100-DRG-34YY-SE656
Drawing Title:	Queen Mother Hall Long Sections

Also refer to Landscaping Architects Layouts for more details.

For suspended foul drainage details refer to M&E Engineers Details.

**AS BUILT DRAWING**

This drawing has been provided as an 'As Built' drawing based on information provided by MOUNT ANVIL.

- AS1 19.09.18 issued 'As Built' JWR SPK
- C3 21.06.17 gully added at base of ramp into QMH car park. RWP 7 omitted. Culvert replaced with attenuation tanks. JWR SPK
- C2 10.07.17 Ramped entrance into sub-basement car park updated & channel drain added off in accordance with latest Architects layout. JWR SPK
- C1 02.05.17 Title amended. Drainage locations checked with latest landscape info. Suspended drainage in QM stairwell updated. JWR SPK
- 21.12.16 First issue under amended drawing no. previous drawing No. 9100-DRG-28YY-00203. Suspended drainage notes amended within Car Park to increase headroom. To min 2.2m. JWR SPK

REV	DATE	DESCRIPTION	BY



Engineering Layout  
Western Section of Site  
Sheet 2 of 3 - Level B0

Project No: 11581  
Kidderpore Avenue

SCALE: 1:1000/40 DATE: June 2016 DRAWN: JWR CHKD: SPK  
DRG NO: 9100-DRG-34YY-B0203 AB1

