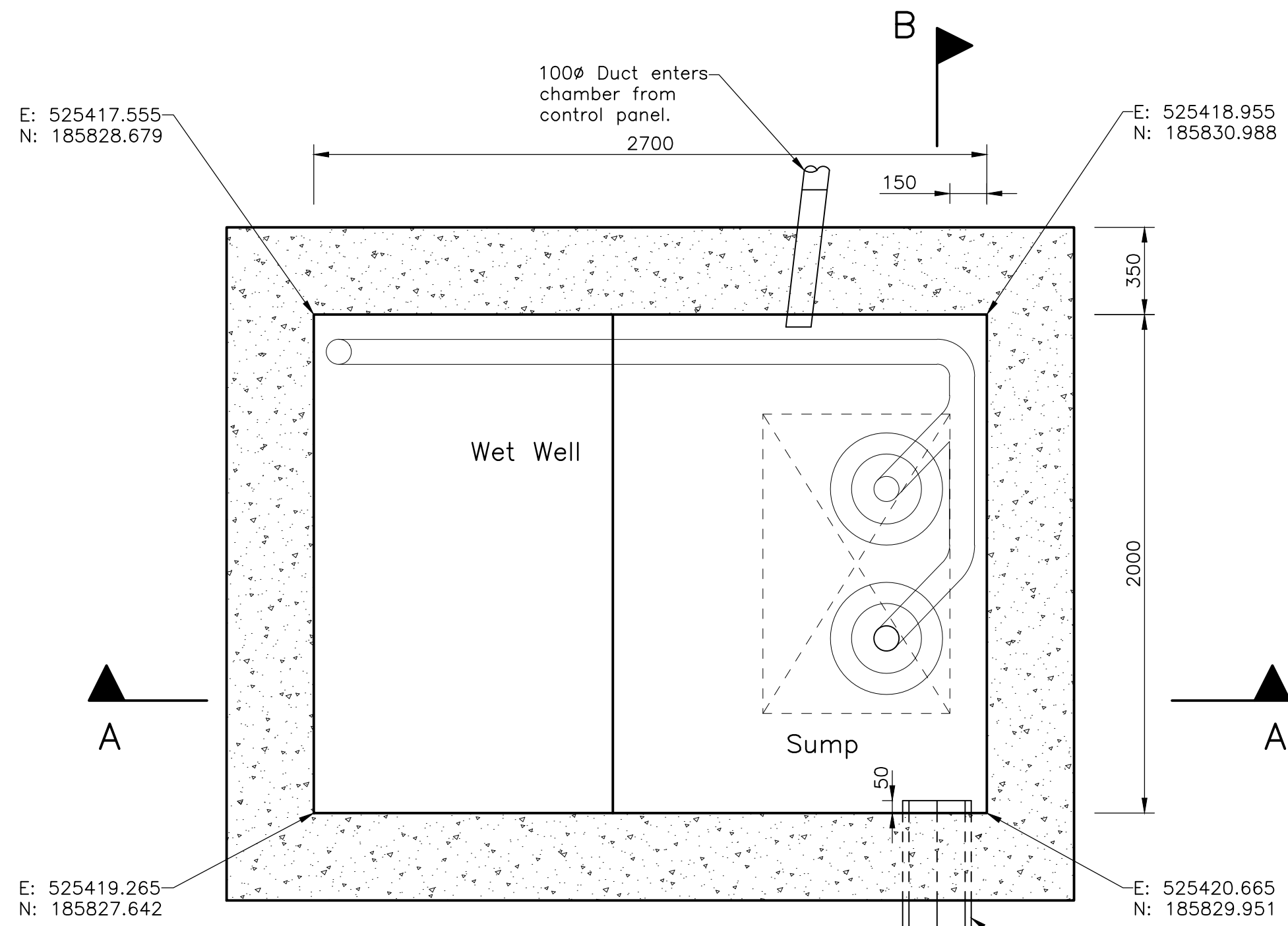


PUMPS

Duty and standby pumps by Willow Pumps or equivalent approved. Pump supplier to be advised of the following information:

- Rising main: (100Ø HDPE)
- Pumped flow rate = 6l/s against the head indicated by the drawings.
- A three-phase electrical supply will be available.
- Control panel to be located as shown in a lockable cabinet. The control panel shall include a lockable isolator.

The proposed pump details shall be supplied to the structural & civil engineer for comment with respect to the above parameters at least 5 working days prior to the commencement of any drainage works. The civil & structural Engineer's response shall not be deemed to be confirmation in any way of his approval and subsequent responsibility for this item and it is the supplier via the contractor who shall be responsible for supplying and installing pumps that are fit for the purpose defined within the contract.



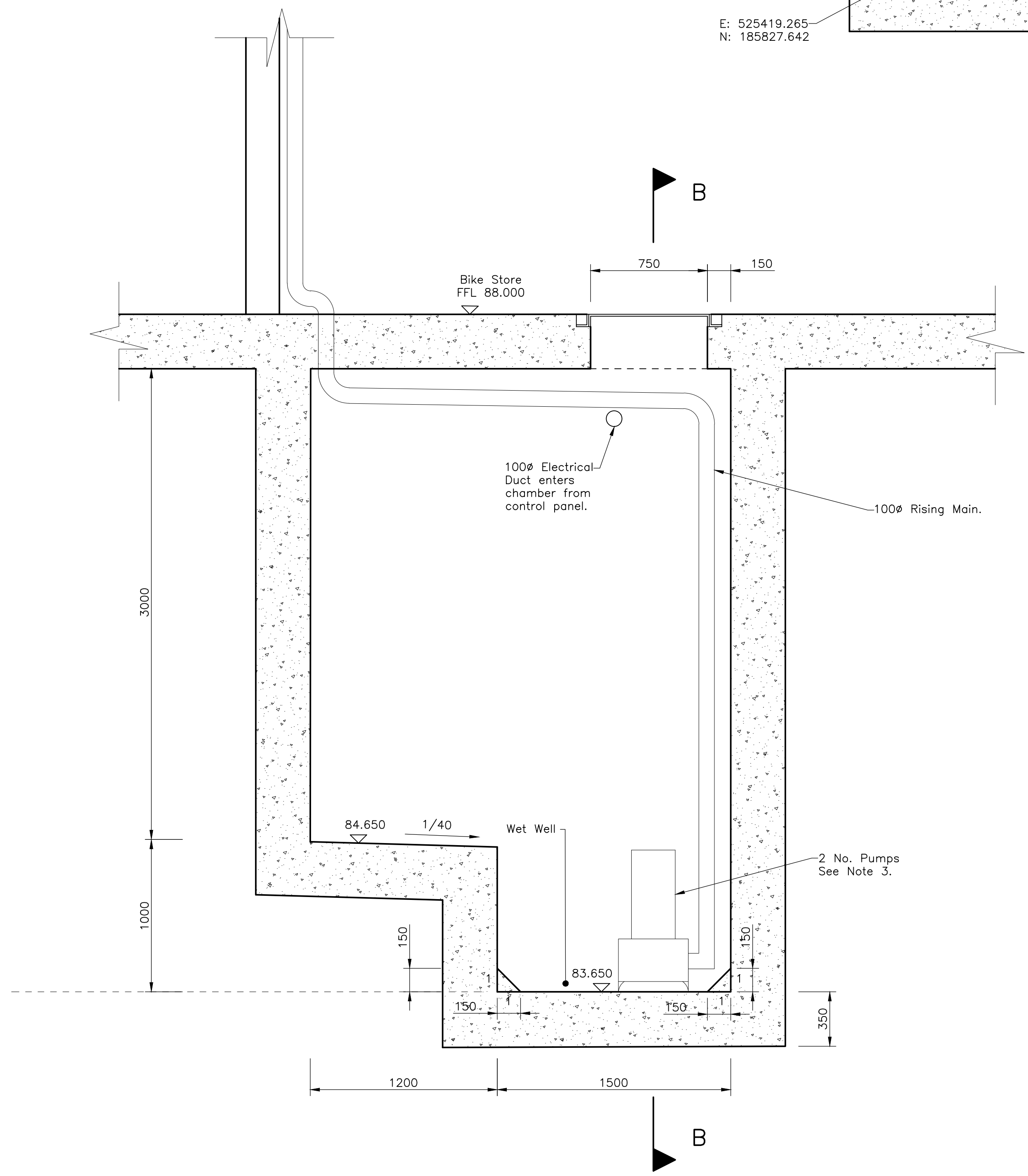
Plan
(Scale 1:20)

NOTE: ALL PIPES ENTERING THE CHAMBER TO END 50MM BEYOND THE INSIDE FACE OF THE CHAMBER WALL. FINAL EXTERNAL JOINT TO BE LOCATED WITHIN 150MM OF OUTER FACE OF CHAMBER WALL. MAX 500MM ROCKER PIPE BEYOND.

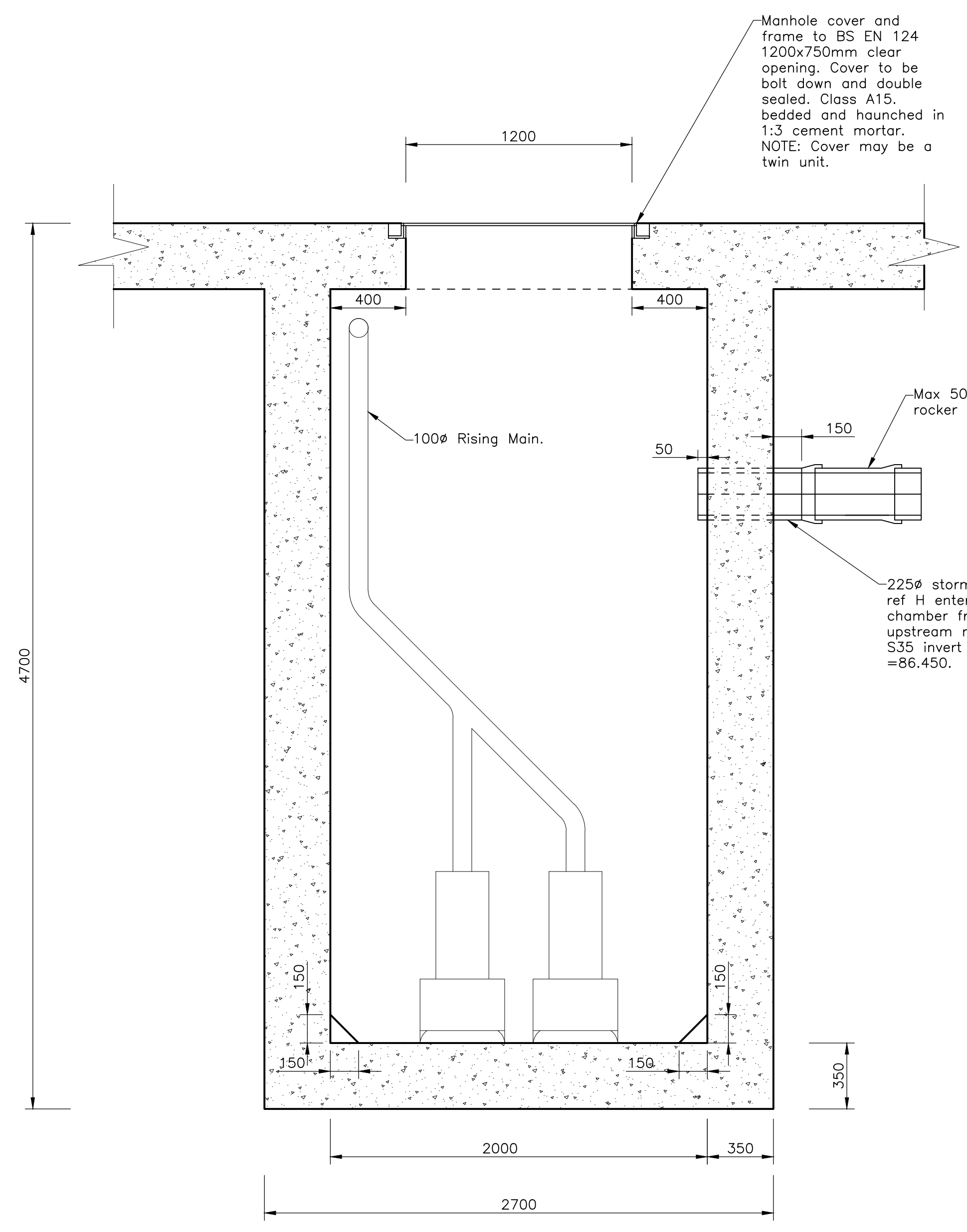
THIS DRAWING IS TO BE READ IN CONJUNCTION WITH DRAWING 9100-DRG-28RF-00211.

NOTE: ALL PIPES AND DUCTS CONNECTING TO THIS CHAMBER WILL REQUIRE GROUND-HEAVE PROTECTION SEE DRAWING 9100-DRG-34YY-DE280.

- General Notes**
1. All dimensions are in millimeters unless otherwise stated.
 2. All levels are in metres above ordnance datum.
 3. Representation of all pump equipment is schematic only. Final details to be agreed with the pump supplier.



Section A-A
(Scale 1:20)



Section B-B
(Scale 1:20)

AS BUILT DRAWING
This drawing has been provided as an 'As Built' drawing based on information provided by MOUNT ANVIL.

AB1 19.09.18	Issued 'As Built'	JW SFK
C214.06.17	Incoming 225Ø storm pipe Ref H enters chamber 300mm lower.	JSR SFK
C104.04.17	Issued for construction.	JSR SFK
T2 27.03.17	Typo amended in title.	JSR SFK
T1 20.03.17	Minor chamber access removed.	JSR SFK
A 22.12.16	Pumping rate added. Cover spec amended. Pump chamber size amended. rising main route amended.	JSR SFK
- 08.12.16	First Issue.	JSR SFK

REV	DATE	DESCRIPTION	BY	CHK'D
-----	------	-------------	----	-------



TITLE:
Rosalind Franklin Storm Water Pump Facility

PROJECT:
Project No. 11581
Kidderpore Avenue

SCALE: 1:20 (A1) **DATE:** Sept; 2016 **DRAWN:** JSR **CHK'D:** SFK

JOB NO. **DRG NO.** **REV.**

9100-DRG-34RF-SE213 AB1

Tully De'Ath consultants
Engineering at its Best

T: 01342 828 000
E: info@tullydeath.com
W: www.tullydeath.com