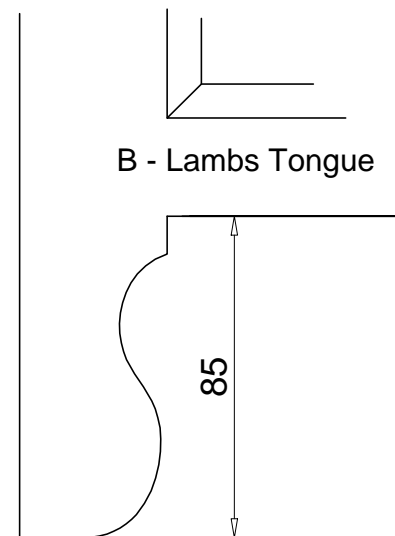
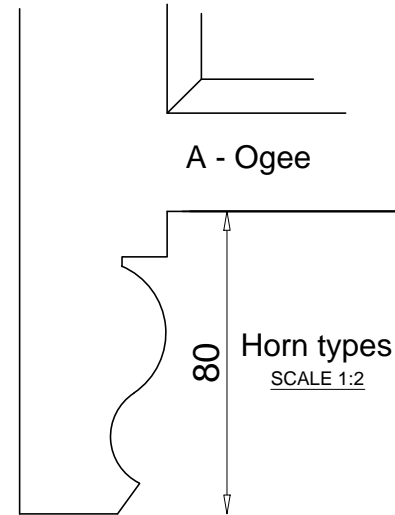
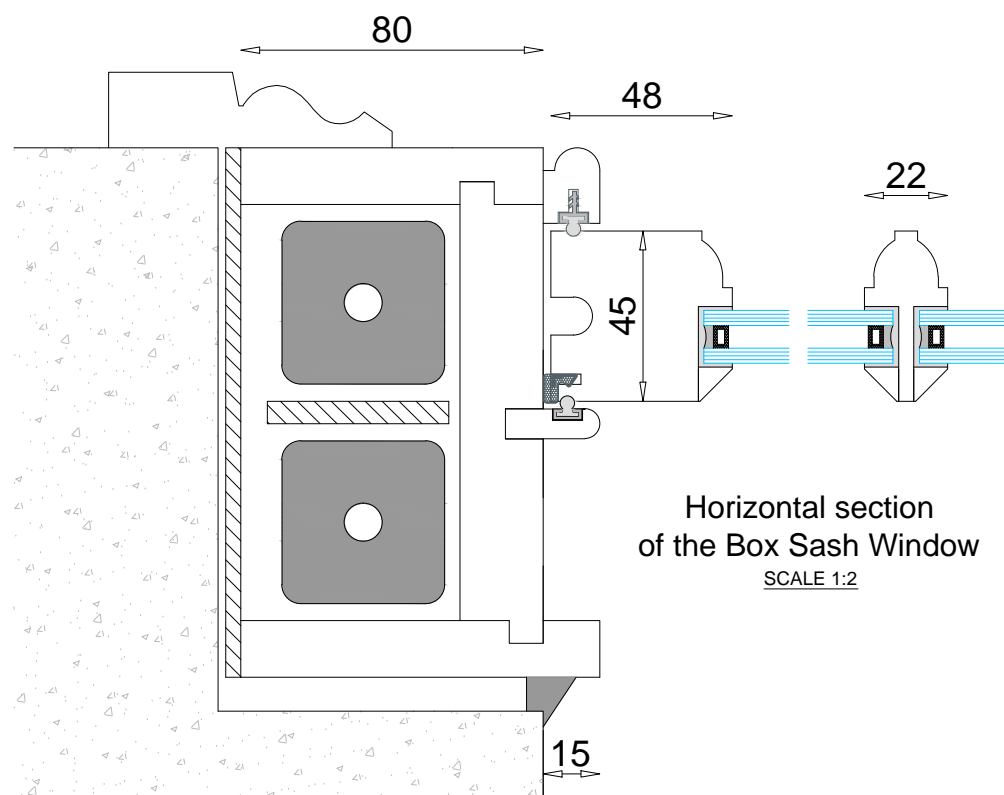
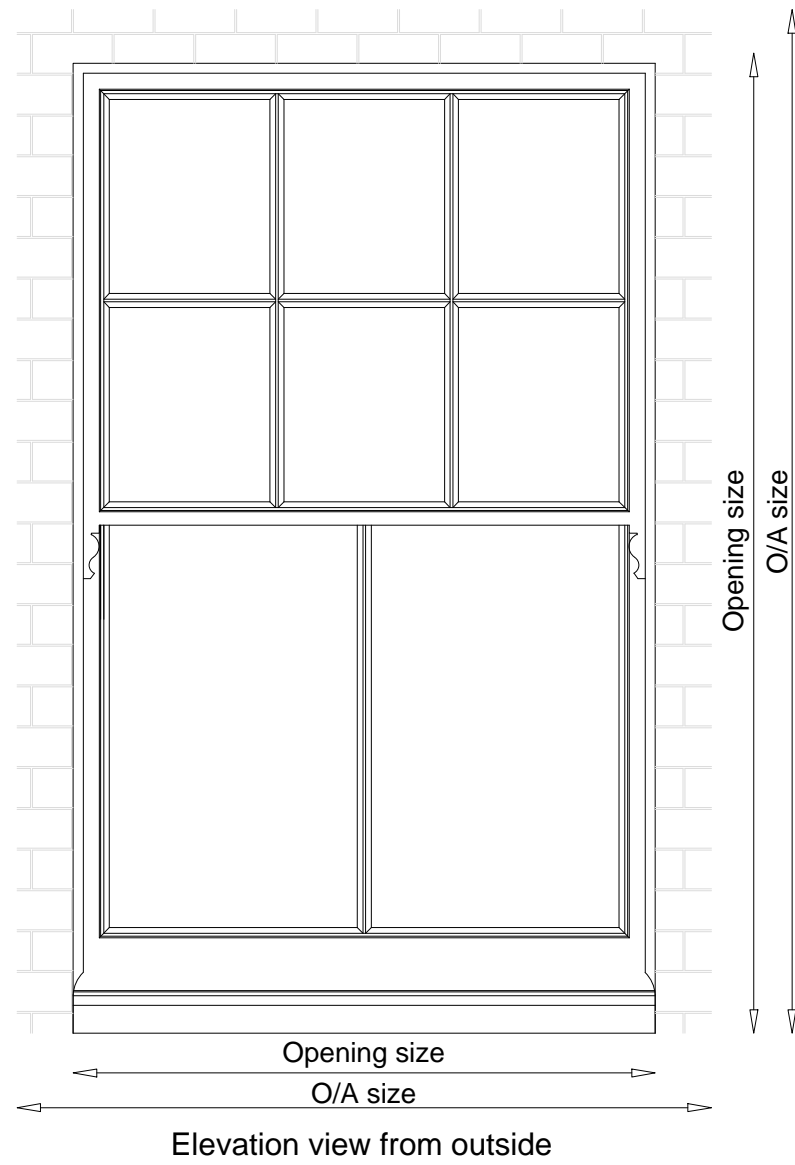


# Heritage Range: Sliding Sash Window

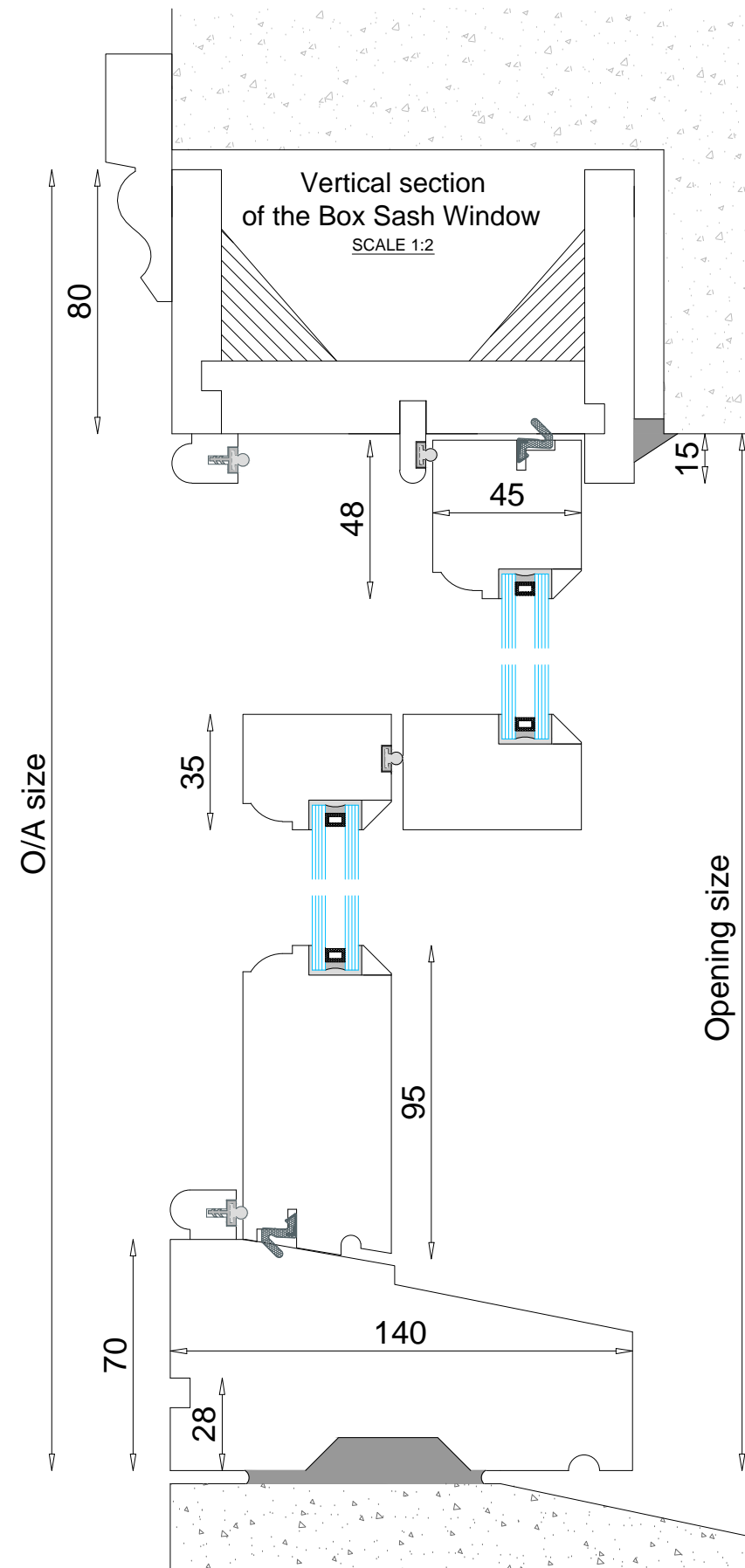
Example window layout, 6 over 2 panes.

Available in all glazing bar configurations or without glazing bars.

Ovolo or lambs tongue moulds available or to match existing design.



Standard horn types available as above or to match existing. With or without horns to top / bottom sashes.



## General notes

1. Windows to be glazed with clear Timbalite 4/6/4 or 4/4/4 low E krypton filled double glazed units with choice of black, white spacer bars. Large choice of glass types available. Glazing units can be putty faced or timber beaded.
2. Glazing units within 800mm of finished floor level to be toughened safety glass to BS.6206.1981.
3. All timber to be Accoya/Hardwood.
4. All windows to be fully weather stripped with schlegel aquamac soft compression seals.
5. Windows to be fitted with lead counter balance weights.
6. Ironmongery to include 4 x bearing type sash pulleys - 2 x sash lifts - 1 x fitch catch (2 no to wider windows); colour/finish - choice of satin chrome, polished chrome or polished brass.
7. Security - Provide 2 no security sash stop locks to each set of opening sashes.
8. Paint finish: white as standard - factory spray applied microporous paint. Choice of colour, dual colour, colour match or stain.

Scale	1: 2 @ A3	Drawing No.	
Date		Rev/Issue	1
Dimension	mm	Design by	

Project Name:  
Heritage Range  
Sliding Sash Window  
Example

**TIMBAWOOD**

Timbawood Ltd.  
Unit 9, Mount Road Ind. Est. Feltham, TW13 6AR  
Tel: 0800 043 2499 Fax: 0208 867 2767  
email: mail@timbawood.co.uk web: www.timbawood.co.uk

Copyright - Timbawood Ltd. All designs and drawings are the intellectual property of Timbawood Ltd and must not be used or copied without the permission of Timbawood Ltd