

New fascia panel to be 2mm aluminium panel, to be powder coated Blue RAL 5005 30% Gloss with Brown Arizona Oak Woodtex Strip to Base with Store Address and Est. year vinyl lettering applied to new fascia, non illuminated.
Store Address: 100mm
Est. Year: 75mm

SIGN 13
Size: 7095x760mm

New fascia panel to be 2mm aluminium panel, to be powder coated Blue RAL 5005 30% Gloss with Brown Arizona Oak Woodtex Strip to Base

SIGN 20
Size: 3770x760mm

SIGN 19
Size: 2920x760mm

SIGN 18
Size: 2760x760mm

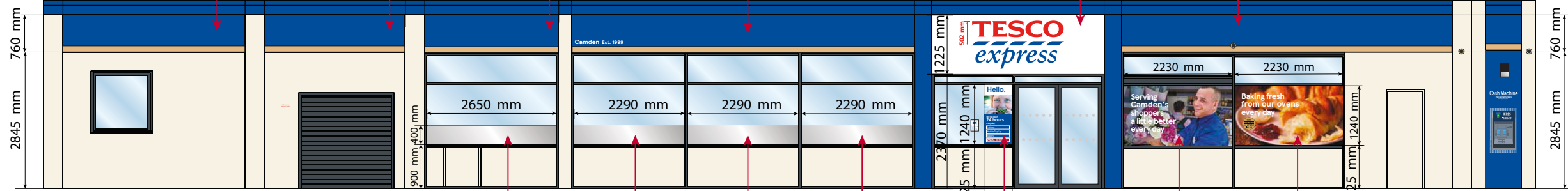
7095 mm

3575 mm

6835 mm

New fascia panel to be 2mm aluminium panel, to be powder coated Blue RAL 5005 30% Gloss with Brown Arizona Oak Woodtex Strip to Base

SIGN 8
Size: 6835x760mm



New Plain Frosting to be applied upto 1300 high from FFL

SIGN 17
Size: 2650x400mm

SIGN 16
Size: 2290x400mm

SIGN 15
Size: 2290x400mm

SIGN 14
Size: 2290x400mm

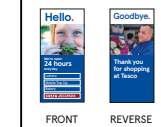
SIGN 10
Size: 2230x1240mm

SIGN 9
Size: 2230x1240mm

New Vinyl to be applied up to a Height of 2165mm from FFL. Chiffon colour vinyl to be applied on reverse.

SIGN 12
Size: 585x1240mm

Store Directory glazing vinyl to be applied internally Blue Ref: TRU 35-A7



PROPOSED FRONT ELEVATION

New fascia panel to be 2mm aluminium panel, to be powder coated Blue RAL 5005 30% Gloss with Brown Arizona Oak Woodtex Strip to Base

SIGN 3
Size: 4065x760mm

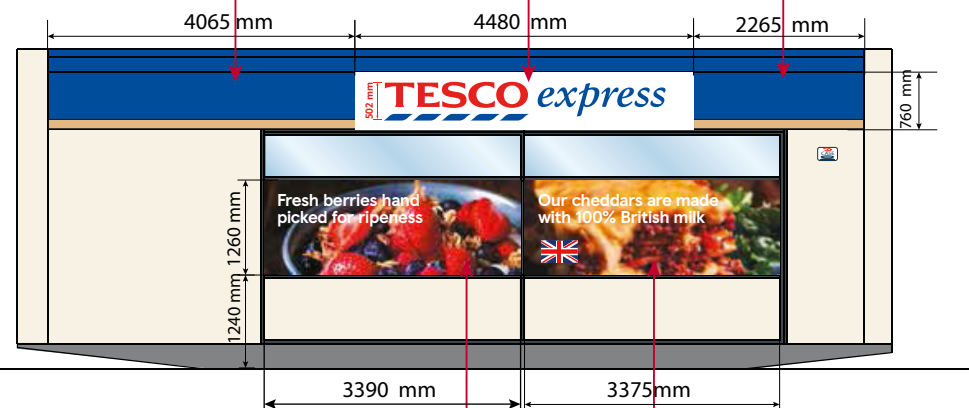
New Internally illuminated Box Fascia in White RAL 9010. 5mm Perspex-Opal 030-Avery 5600 LD/082A. Blue Translucent vinyl lettering applied to Base

SIGN 2
Size: 4480x760mm

New fascia panel to be 2mm aluminium panel, to be powder coated Blue RAL 5005 30% Gloss with Brown Arizona Oak Woodtex Strip to Base

SIGN 1
Size: 2265x760mm

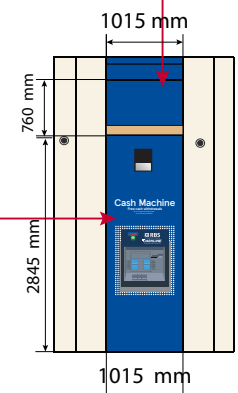
SIGN 4
Size: 1015x760mm



5mm dibond panel to be wrapped around ATM surround. Colour-Pantone 293, with print as per artwork. White spots on blue for vinyl panel. Blue header panel with white text to read 'Cash Machine'. New Light to be installed.

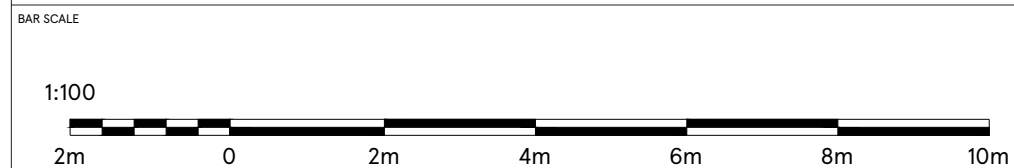
SIGN 7
Size: 1015x2845mm

New vinyls to be applied externally up to height of 2500 from FFL. Chiffon colour vinyl to be applied on reverse



PROPOSED SIDE ELEVATION (CAMDEN ROAD)

PROPOSED CORNER ELEVATION (CAMDEN ROAD)



DRAWING NO 03_2213_03B	DATE 13.10.2019
SCALE 1:100@A3	CHECKED BY ANDY HORWOOD
DRAWN BY SHIKHA	

STORE TYPE EXPRESS	STORE NAME CAMDEN
CONTENT PROPOSED ELEVATIONS	

TESCO
FEASIBILITY ARCHITECTURE
TESCO STORES LIMITED EXPRESS GROUP
OMEGA BUILDING, KESTREL WAY, HERTFORDSHIRE,
WELWYN GARDEN CITY, HERTFORDSHIRE, AL7 1GA
TELEPHONE : 01707 395150
THE COPYRIGHT AND ALL OTHER RIGHTS IN AND RELATING TO THIS PUBLICATION
BELONG TO AND ARE THE SOLE PROPERTY OF TESCO STORES LIMITED
ALL RIGHTS ARE RESERVED. NEITHER THE WHOLE NOR ANY PART OF THIS
PUBLICATION MAY BE REPRODUCED OR TRANSMITTED IN ANY FORM OR BY ANY
ELECTRONIC OR MECHANICAL MEANS INCLUDING PHOTOCOPIING AND RECORDING
OR FROM ANY RETRIEVAL SYSTEM WITHOUT THE PRIOR WRITTEN LICENCE FROM THE OWNER
©1997 TESCO STORES LIMITED