

TheWorks.co.uk



D86 Princesway North
Team Valley Trading Estate
Gateshead
NE11 0TU

0191 487 67 67
david@onesignanddigital.com
www.onesignanddigital.com



8290 mm



A Fascia Sign

A 2.5mm folded aluminium fascia panel, with 100mm returns. Powder coated BS10E53 Yellow, with 25mm shadow gap to TOP + BOTTOM To have the panel aperture cut to read 'TheWorks.co.uk', studded to the rear and backed off with 3mm LED opal panel with 5mm push through opal 050 letters and lozenge finished with face applied 5002 translucent vinyl. Blue vinyl lozenge plus spots applied to the face of the sign. Internal illumination using LED's.

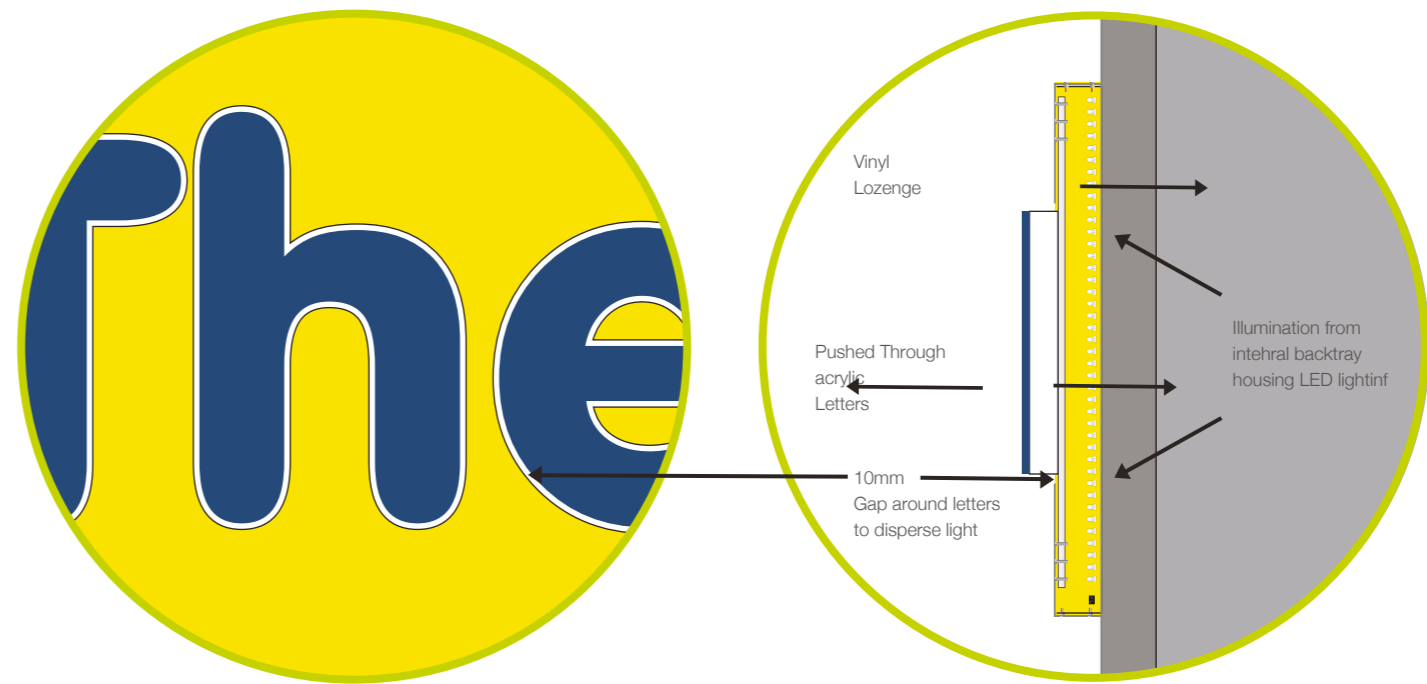
Illuminated Folded Alumium Panel **Sizes** : 8290 x 1050 **Scale**: 1:25 at A3



B Double sided projecting sign

Double sided internally illuminated projecting sign, fixed to the proposed fascia sign, colours and deatil to match fascia

Size : 700 x 700 mm **Scale**: 1:20 at A3



LED Backtray

Internally Illuminated fret aluminium panels backed off with LED acylic. Panels and logo painted to match RAL 5013 with central lozenge painted BS1053E

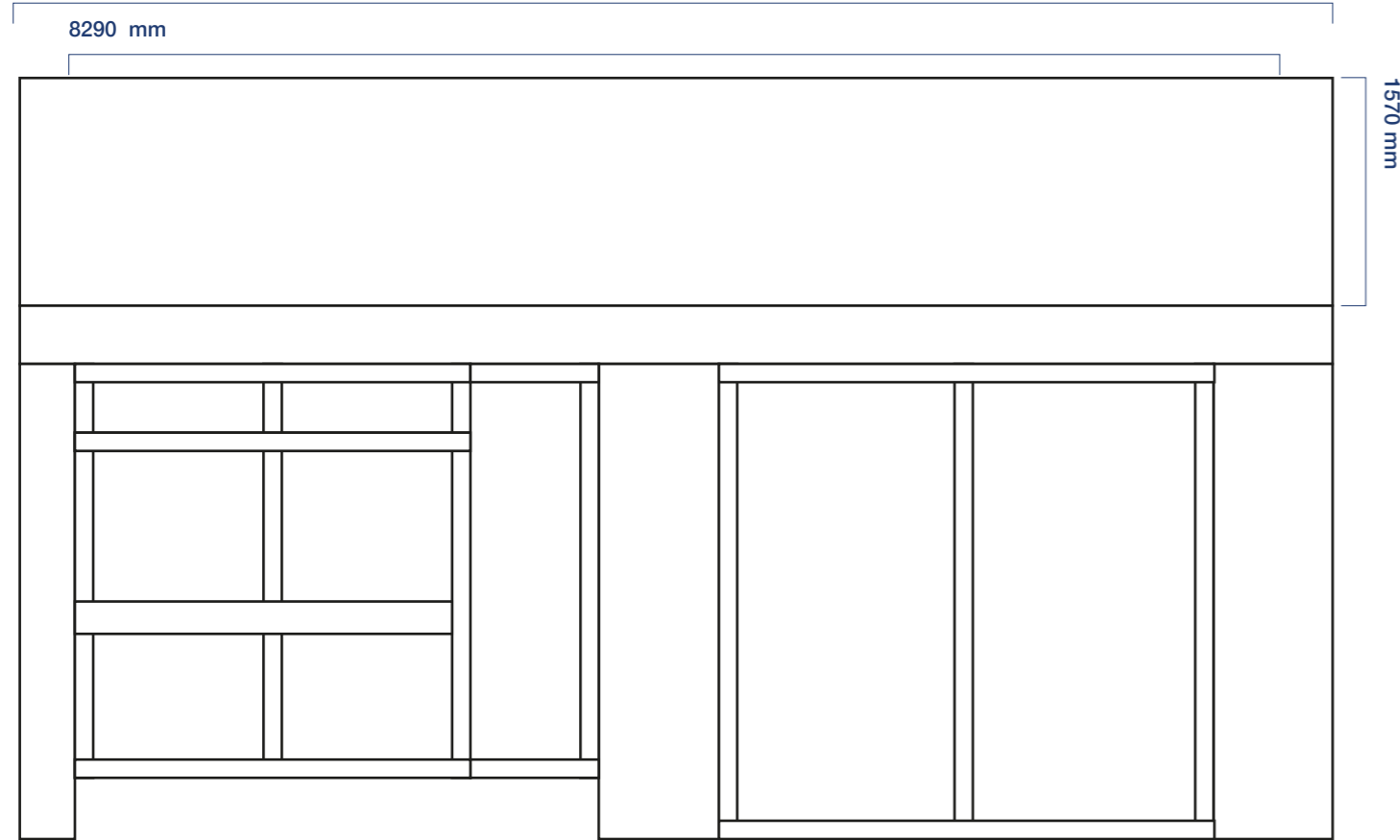
Client Information

We require vector graphics (lines and curves with fonts broken apaort) for cutting/manufacturing or high resolution images for digital printing. Please supply any colour references, fonts and artwork guidelines. Artwork development, re-generation or conversion may incur additional cost.

Client: **The Works**
 Designer: **Andy Olley**
 Date: **15.10.19**

9050 mm

Existing Elevation scale 1:50 at A3



9050 mm

Proposed Elevation scale 1:50 at A3



Client Information

We require vector graphics (lines and curves with fonts broken apart) for cutting/manufacturing or high resolution images for digital printing. Please supply any colour references, fonts and artwork guidelines. Artwork development, re-generation or conversion may incur additional cost.

Client: **The Works**
Designer: **Andy Olley**
Date: **15.10.19**

Signage Location

The Works 167-169, Camden High Street, London, NW1 7JY

8290 mm



700 mm



Client Information

We require vector graphics (lines and curves with fonts broken apart) for cutting/manufacturing or high resolution images for digital printing. Please supply any colour references, fonts and artwork guidelines. Artwork development, re-generation or conversion may incur additional cost.

Client: The Works
Designer: Andy Olley
Date: 15.10.19