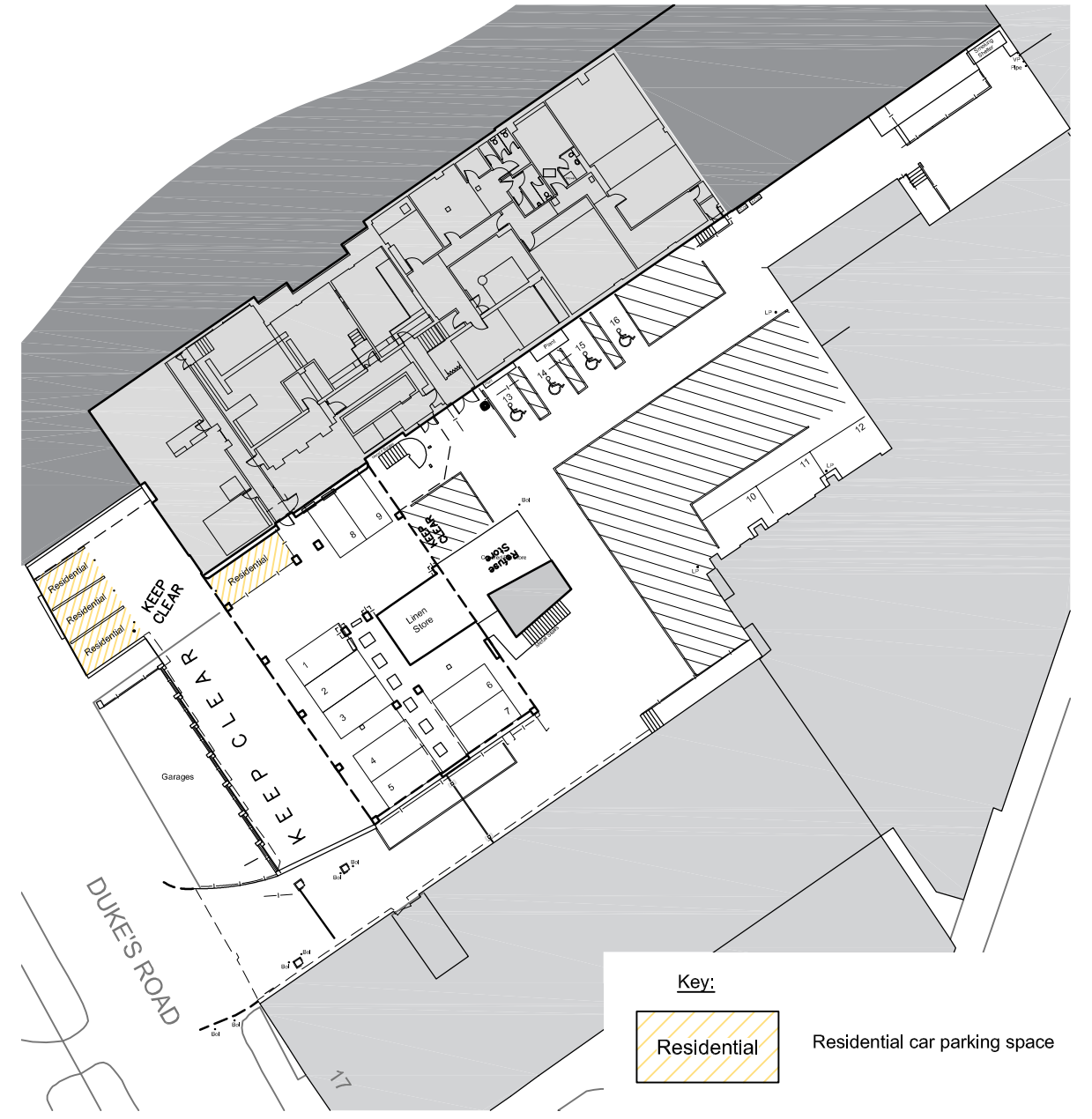
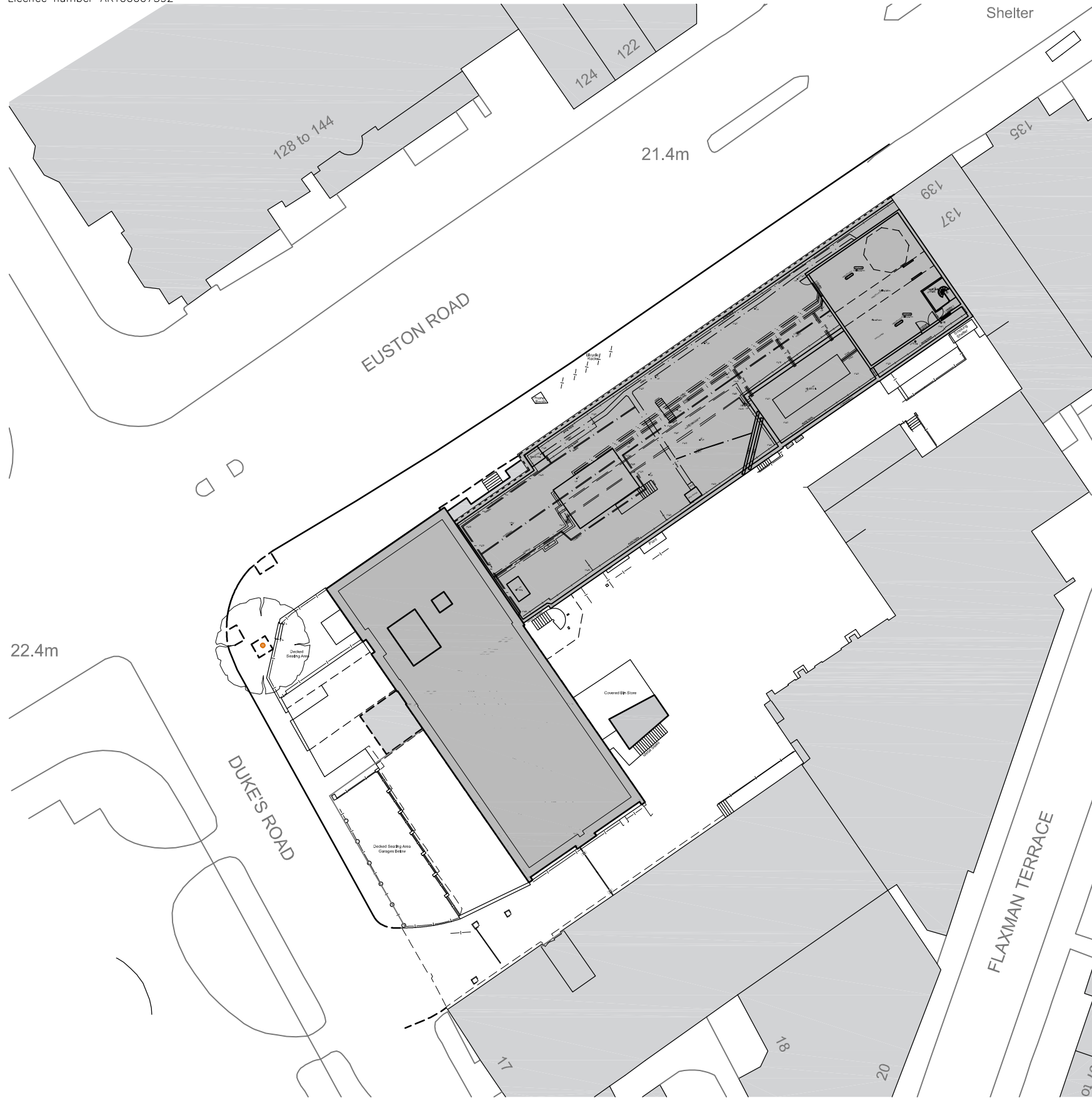


Ordnance Survey® information.  
 © Crown copyright. All rights reserved.  
 Licence number AR100007392



**EUSTON**

<b>SITE AREA</b>	0.31 Ha
<b>HOTEL</b>	
No. of Storeys	LG + 6
Bedrooms	265
<b>CAR PARKING - PREMIER INN</b>	
Regular	12
Disabled	4
<b>TOTAL</b>	<b>16</b>
Excludes 4no. residential spaces and garages.	
Cycle Parking	-

**Key:**

Residential Residential car parking space

Ground Level - With Roof Plan

Lower Ground Level

CLIENT 	GENERAL NOTES All drawings are subject to full site survey. All dimensions are to be checked on site.	NORTH 	REV. DESCRIPTION DATE INITIALS	 CHQ Architects Ltd. The Maltings, 44 Whitehorse Street, Balloch, Hertfordshire SG7 6DQ Telephone: (01462) 895110 Email: design@chq-architects.co.uk www.chq-architects.co.uk	PROJECT Premier Inn 1 Duke's Road, London WC1H 9PJ	DRAWING Existing Site Plan
			SCALE 			

CHQ.15.11690-PL02