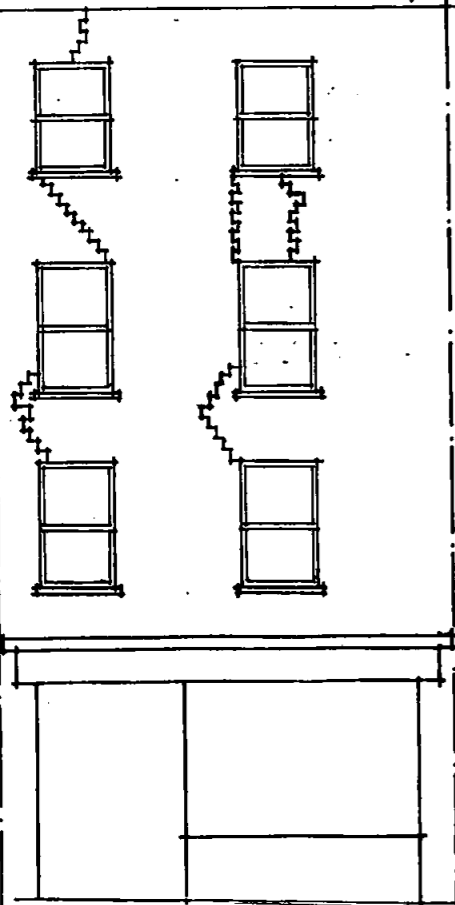
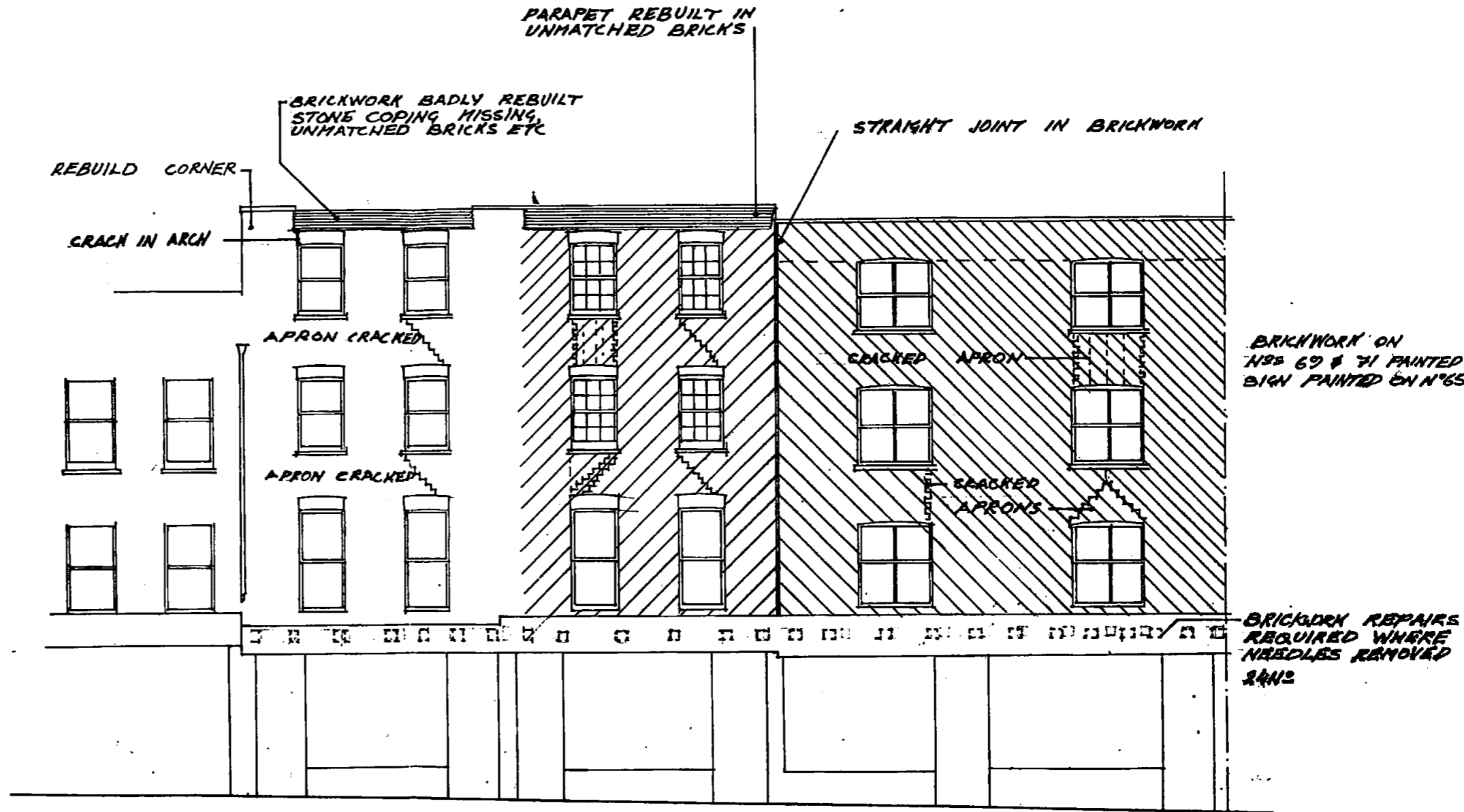


NOTES :-

Outline brickwork repairs

- A. WHERE SINGLE CRACKS OCCUR DIAGONALLY ACROSS WINDOW APRONS THE BRICKWORK SHOULD BE CUT OUT ALONG THE LINE OF THE CRACK FOR THE WHOLE DEPTH OF THE WALL (322MM THICK) REBUILD IN MATCHING BRICKWORK RETAINING EXISTING JOINT & BOND. WHERE SEVERAL CRACKS OCCUR IN AN APRON DEMOLISH COMPLETELY & REBUILD TO MATCH
- B. DEMOLISH THE PARAPETS ON NOS 65 & 67 TO WINDOW HEAD LEVEL. REBUILD ARCHES & PARAPETS TO MATCH EXISTING INCLUDING NEW COPINGS.
- C. REPAIR BRICKWORK WHERE NEEDLES HAVE BEEN REMOVED MAINTAINING JOINT & BOND (24N^o).
NOTE. ALL EXPOSED BRICKWORK REPAIRS ARE TO BE CARRIED OUT USING BRICKS SALVAGED FROM THE DEMOLITIONS SELECTED TO MATCH IN SIZE & COLOUR THE EXIST. WALL
- D. CLEAN FASCIAES OF NOS 69 & 71 REMOVING ALL PAINT FROM BRICK FACES & JOINTS. CLEAN BRICK FASCIAE ON NR 65. PREPARE PAINTED SIGN ON NR 67 FOR REPAINTING
- E. RAKE OUT ALL JOINTS & REPOINT WHOLE ELEVATION TO MATCH EXISTING.
- F. REPLACE BROKEN AND ERODED GILLS 12 NR
- G. RAKE OUT EXISTING VERTICAL JOINT BETWEEN NOS 67 & 69 TO A DEPTH OF 25MM. FORM NEW MASTIC JOINT USING A GOOD QUALITY MASTIC.



OUTLINE EXISTING BRICK SURVEY.

N°1 SHELTON STREET

LONDON BOROUGH OF CAMDEN
 PLANNING AND COMMUNICATIONS
 DEPARTMENT
 15 FEB 1988 (A.M.)
 RECEIVED
 ACK. REF. TO:

65 67 69 71

MONMOUTH STREET

LONDON BOROUGH OF CAMDEN
 TOWN AND COUNTRY PLANNING ACT
 2 MAR 1988
 APPROVED
 PLANS NOT APPROVED
 ON BEHALF OF THE COUNCIL