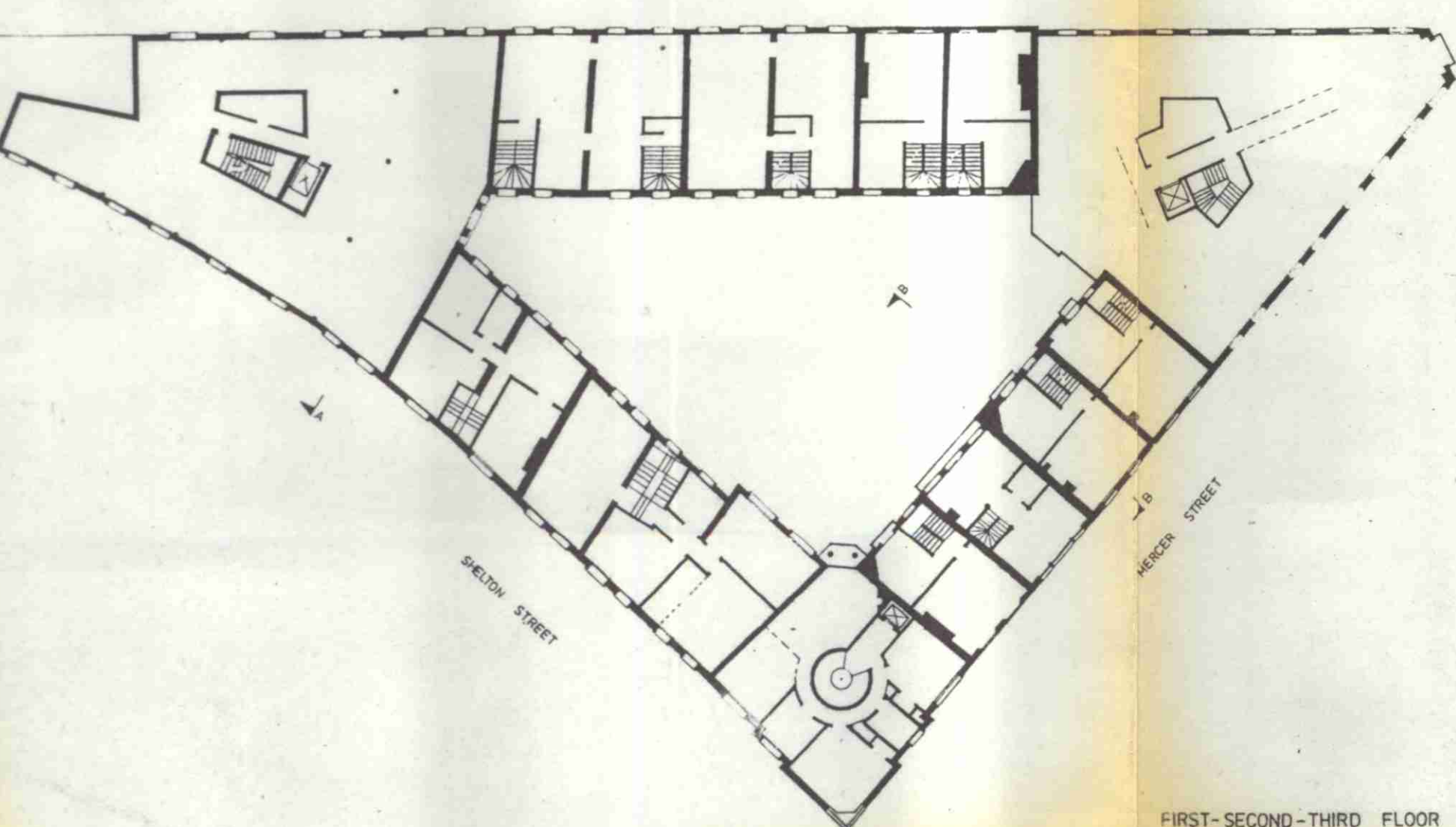
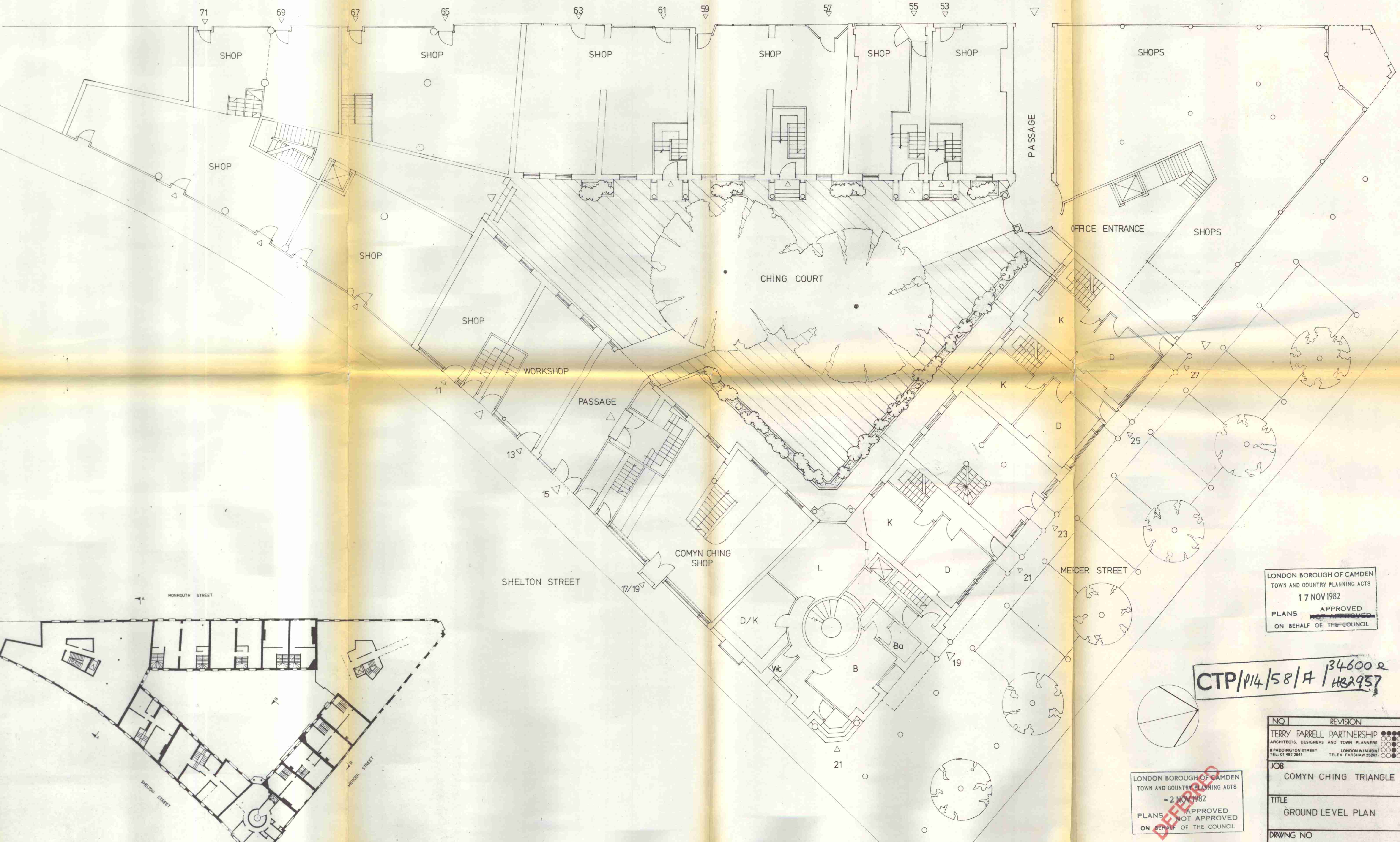


MONMOUTH STREET



FIRST-SECOND-THIRD FLOOR NOT TO SCALE

LONDON BOROUGH OF CAMDEN
TOWN AND COUNTRY PLANNING ACTS
17 NOV 1982
PLANS ~~NOT APPROVED~~ APPROVED
ON BEHALF OF THE COUNCIL

CTP/P14/58/A / 34600 &
HB2957

LONDON BOROUGH OF CAMDEN
TOWN AND COUNTRY PLANNING ACTS
- 2 NOV 1982
PLANS ~~NOT APPROVED~~ APPROVED
ON BEHALF OF THE COUNCIL

NO	REVISION	DATE
	TERRY FARRELL PARTNERSHIP ARCHITECTS, DESIGNERS AND TOWN PLANNERS 8 PADDINGTON STREET LONDON W1M 6DN TEL: 01 487 2641 TELEX: FARSHAW 25267	
JOB COMYN CHING TRIANGLE		
TITLE GROUND LEVEL PLAN		
DRAWING NO CC/205		
DATE: OCT '82 SCALE: 1:100 <small>DO NOT SCALE-ALL DIMENSIONS TO BE CHECKED ON SITE-THIS DRAWING IS COPYRIGHT</small>		