

GENERAL NOTES

Drawing to be read in conjunction with all information by architects, structural engineer & service consultants.

The contractor is not to scale from this drawing. All written dimensions to be checked on site before work commences. Discrepancies, where identified, must be reported to the architect immediately.

This drawing is the property of Latitude Architects and Designers and must not be reproduced or disclosed to any unauthorised person either wholly or in part without written consent.

NOTES:

All Structure to S.E. design and spec to be intumescent painted as **M61/110A**.

CONSENTED

L	AV/BM	05.06.18	Stair 05 relocated to avoid clash with separation blockwork wall to TFL demise.
K	AV/MT	14.05.18	Issued for construction
J	AV/MT	12.03.18	Setting out dimensions added.
I	AV/BM	24.01.18	Core setting out updated, stair layout updated, core grid added
H	AV/BM	15.09.17	Stage 4 general update
G	AV/GT	25/05/17	Revised Stage 4 Issue
F	AV/AG	30/4/17	Stage 4 Issue
E	AV/BM	10/02/17	Stage 3 Tender Issue
D	DOR/GT	21/01/15	Initial Tender
C	DOR/GT	09/11/14	General revisions
B	DOR/GT	12/09/14	Updated to suit revised structure
A	DOR	16/07/14	Preliminary issue

Issue | Chkd/Drawn | Date | Description

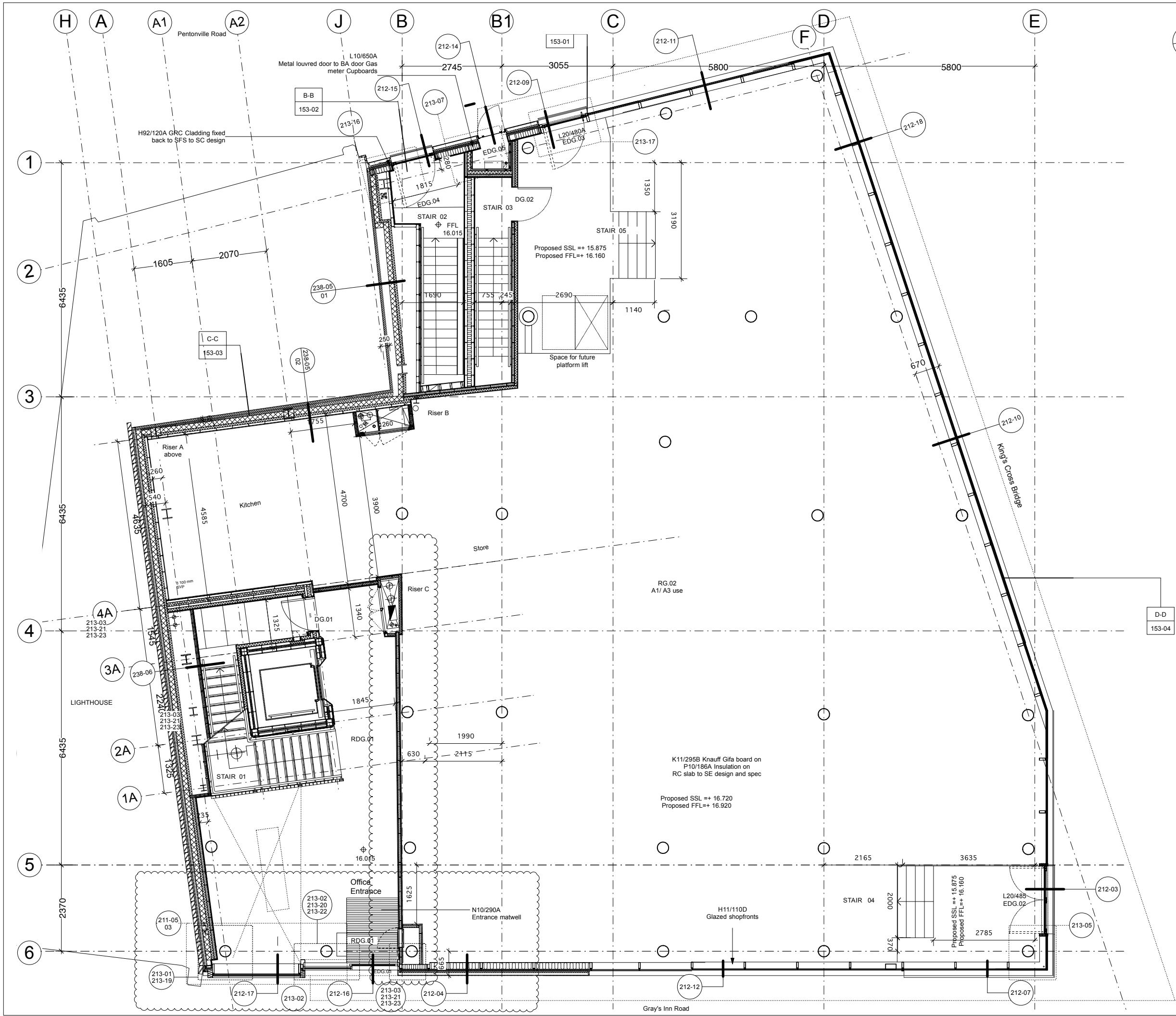
Status	Job No.	Drwg No.	Issue
CONSTRUCTION	1209	151-02	L

Drawing
PROPOSED GROUND FLOOR PLAN

Project
KINGS CROSS BRIDGE

latitude

Latitude Architects
15 Weller Street
London SE1 1QU
T +44 (0) 20 7234 0235
www.latitudearchitects.com



GENERAL NOTES

Drawing to be read in conjunction with all information by architects, structural engineer & service consultants.

The contractor is not to scale from this drawing. All written dimensions to be checked on site before work commences. Discrepancies, where identified, must be reported to the architect immediately.

This drawing is the property of Latitude Architects and Designers and must not be reproduced or disclosed to any unauthorised person either wholly or in part without written consent.

NOTES:

All Structure to S.E. design and spec to be intumescent painted as **M61/110A**.

PROPOSED

N	AV/BM	28.05.19	Instructed revision, Office entrance and office/retail separating wall changed.
M	AV/BM	3/28/19	Instructed revisions, PVR end cladding panel revised
L	AV/BM	05.06.18	Stair 05 relocated to avoid clash with separation blockwork wall to TFL demise.
K	AV/MT	14.05.18	Issued for construction
J	AV/MT	12.03.18	Setting out dimensions added.
I	AV/BM	24.01.18	Core setting out updated, stair layout updated, core grid added
H	AV/BM	15.09.17	Stage 4 general update
G	AV/GT	25/05/17	Revised Stage 4 Issue
F	AV/AG	30/4/17	Stage 4 Issue
E	AV/BM	10/02/17	Stage 3 Tender Issue
D	DOR/GT	21/01/15	Initial Tender
C	DOR/GT	09/11/14	General revisions
B	DOR/GT	12/09/14	Updated to suit revised structure
A	DOR	16/07/14	Preliminary issue

Issue | Chkd/Drawn | Date | Description

Status	Job No.	Drwg No.	Issue
CONSTRUCTION	1209	151-02	N

Drawing 1:100@A3 1:50@A1
PROPOSED GROUND FLOOR PLAN

Project
KINGS CROSS BRIDGE

latitude

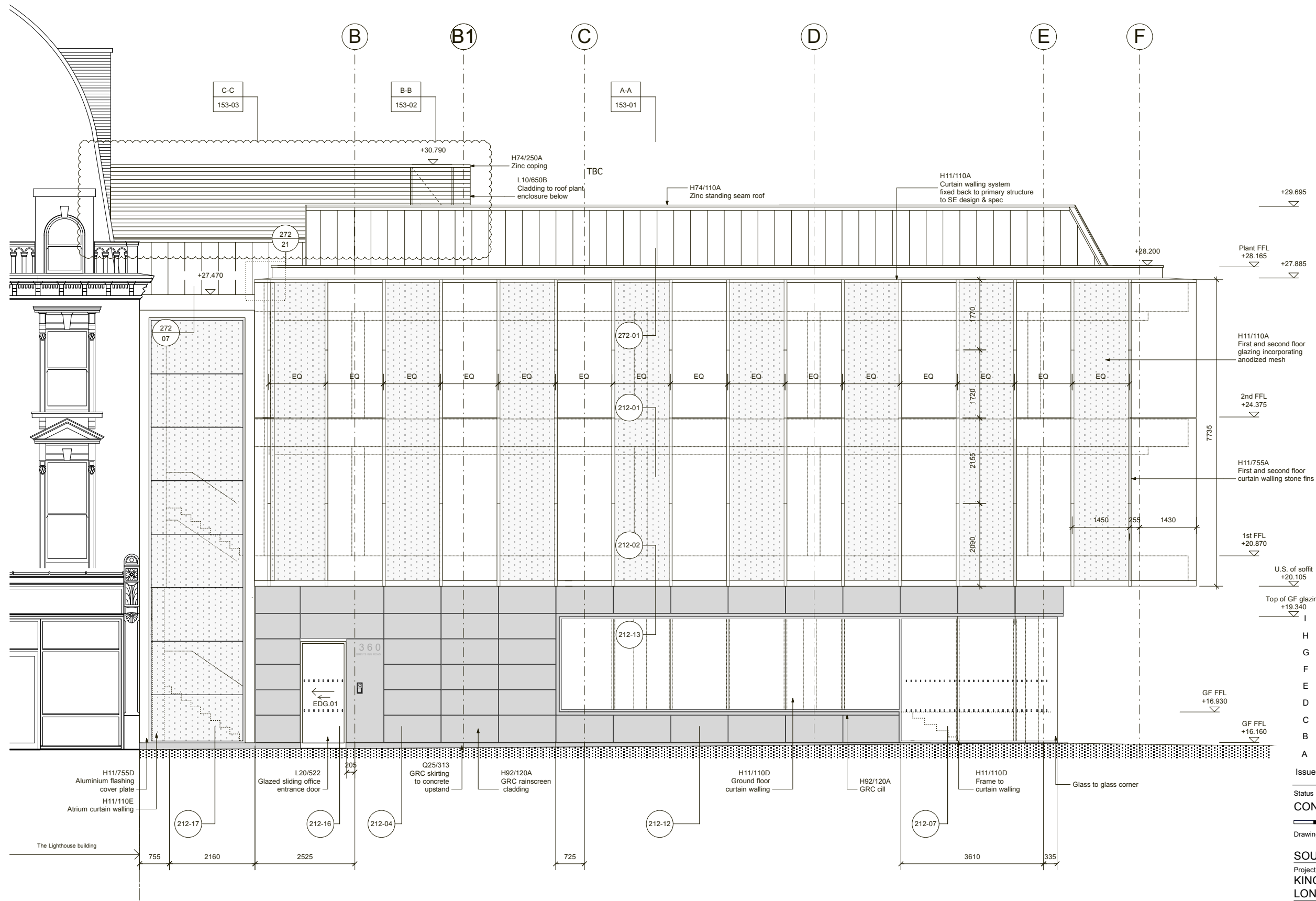
Latitude Architects
15 Weller Street
London SE1 1QU
T +44 (0) 20 7234 0235
www.latitudearchitects.com

GENERAL NOTES

Drawing to be read in conjunction with all information by architects, structural engineer & service consultants.

The contractor is not to scale from this drawing. All written dimensions to be checked on site before work commences. Discrepancies, where identified, must be reported to the architect immediately.

This drawing is the property of Latitude Architects and Designers and must not be reproduced or disclosed to any unauthorised person either wholly or in part without written consent.

**CONSENTED**

Issue	Chkd	Drawn	Date	Description
I	AV	BM	04.10.18	Enclosure to plant room updated
H	AV	MT	14.05.18	Issued for construction
G	AV	MT	12.03.18	Dimensions and references added
F	AV	BM	15.09.17	Stage 4 general update
E	AV	GT	25/05/17	Revised Stage 4 Issue
D	AV	BM	28/04/17	Stage 4 Issue
C	AV	BM	10/02/17	Stage 3 Tender Issue
B	DOR	LB	21/01/15	Initial Tender Issue
A	DOR	GT	09/11/14	Preliminary Issue

Status	Job No.	Drwg No.	Issue
CONSTRUCTION	1209	152-01	I

Drawing 1:100@A3 1:50@A1

SOUTH ELEVATION - Grey's Inn Road

Project
KINGS CROSS BRIDGE
LONDON WC1X

latitude

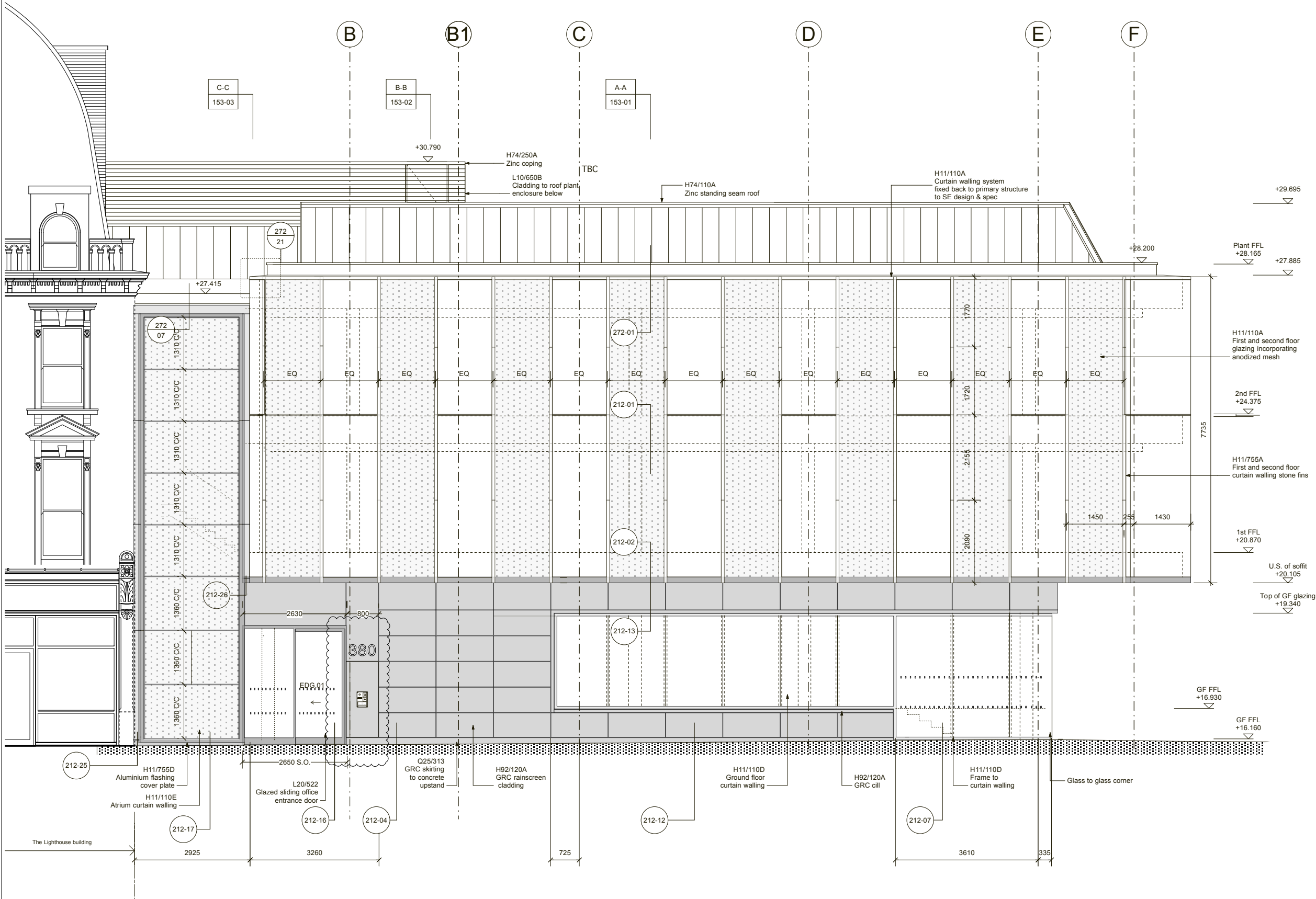
Latitude Architects
15 Weller Street
London SE1 1QU
T +44 (0) 20 7234 0235
www.latitudearchitects.com

GENERAL NOTES

Drawing to be read in conjunction with all information by architects, structural engineer & service consultants.

The contractor is not to scale from this drawing. All written dimensions to be checked on site before work commences. Discrepancies, where identified, must be reported to the architect immediately.

This drawing is the property of Latitude Architects and Designers and must not be reproduced or disclosed to any unauthorised person either wholly or in part without written consent.



PROPOSED

L	BM	AV	03.06.19	Entrance signage revised
K	BM	AV	28.03.19	Instructed Revisions
J	AV	BM	06.02.19	Office entrance door area updated
I	AV	BM	04.10.18	Enclosure to plant room updated
H	AV	MT	14.05.18	Issued for construction
G	AV	MT	12.03.18	Dimensions and references added
F	AV	BM	15.09.17	Stage 4 general update
E	AV	GT	25/05/17	Revised Stage 4 Issue
D	AV	BM	28/04/17	Stage 4 Issue
C	AV	BM	10/02/17	Stage 3 Tender Issue
B	DOR	LB	21/01/15	Initial Tender Issue
A	DOR	GT	09/11/14	Preliminary Issue
Issue	Chkd	Drawn	Date	Description

Status	Job No.	Drwg No.	Issue
CONSTRUCTION	1209	152-01	L

Drawing 1:100@A3 1:50@A1

SOUTH ELEVATION - Grey's Inn Road

Project

KINGS CROSS BRIDGE

LONDON WC1X

latitude

Latitude Architects
15 Weller Street
London SE1 1QU
T +44 (0) 20 7234 0235
www.latitudearchitects.com

Drawing to be read in conjunction with all information by architects, structural engineer & service consultants.

This drawing is the property of Latitude Architects and Designers and must not be reproduced or disclosed to any unauthorised person either wholly or in part without written consent.

Grid lines not squared to facade



I	AV	BM	04.10.18	Enclosure to plant room updated Zinc cladding added to side of rooftlights
H	AV	MT	14.05.18	Issued for construction
G	AV	MT	12.03.18	Dimensions and references added
F	AV	BM	15.09.17	Stage 4 general update
E	AV	BM	25/05/17	Revised Stage 4 Issue
D	AV	BM	28/04/17	Stage 4 Issue
C	AV	BM	10/02/17	Stage 3 Tender Issue
B	DOR	LB	21/01/15	Initial Tender Issue
A	DOR	GT	09/11/14	Preliminary Issue
Issue	Chkd	Drawn	Date	Description

Status	Job No.	Drwg No.	Issue
CONSTRUCTION	1209	152-03	I

Drawing	1:100@A3	1:50@A1
---------	----------	---------

Project
KINGS CROSS BRIDGE
LONDON WC1X

Latitude Architects
15 Weller Street
London SE1 1QU
T +44 (0) 20 7234 0235
www.latitudearchitects.com

GENERAL NOTES

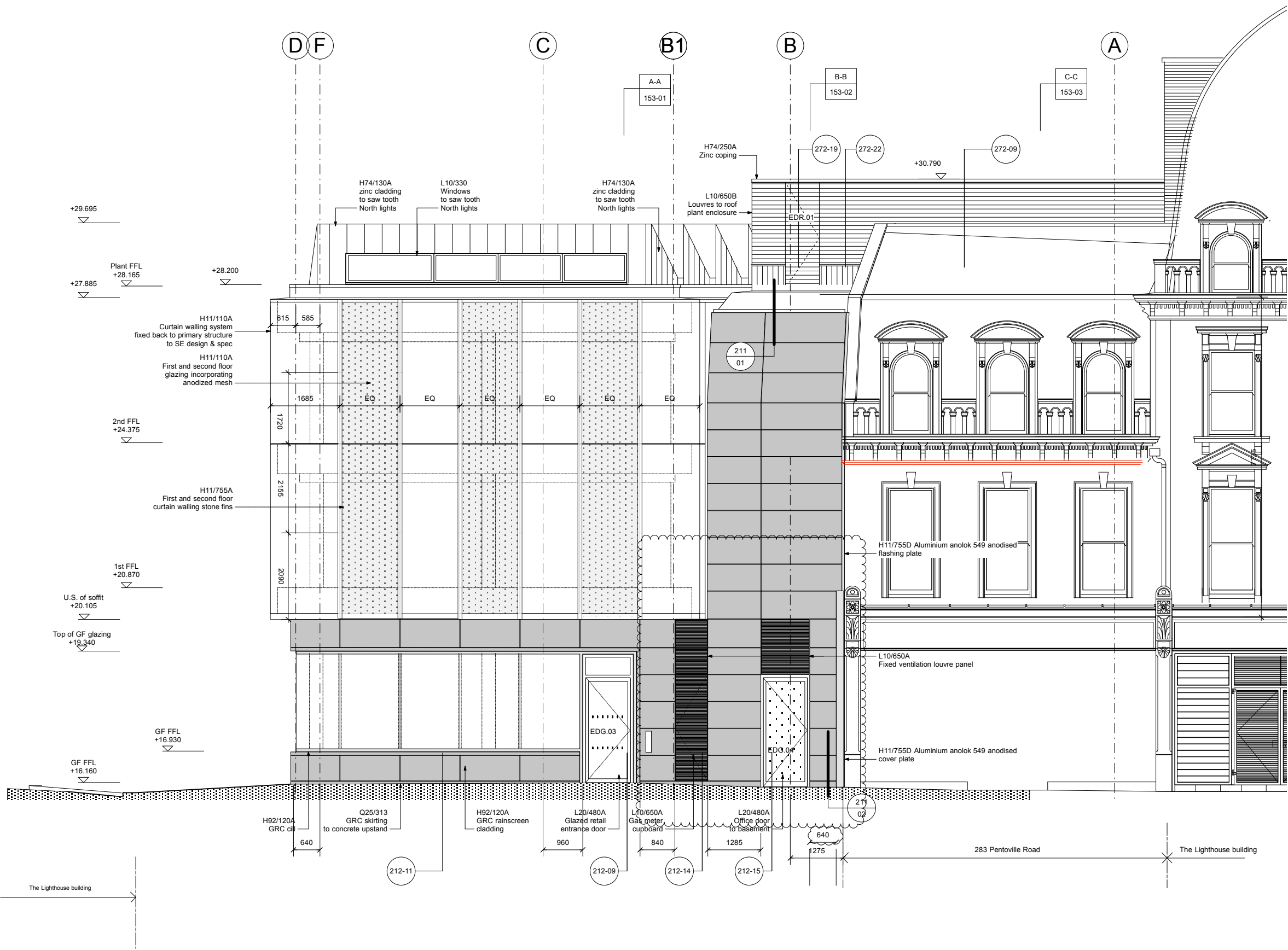
Drawing to be read in conjunction with all information by architects, structural engineer & service consultants.

The contractor is not to scale from this drawing. All written dimensions to be checked on site before work commences. Discrepancies, where identified, must be reported to the architect immediately.

This drawing is the property of Latitude Architects and Designers and must not be reproduced or disclosed to any unauthorised person either wholly or in part without written consent.

NOTES:

Grid lines not squared to facade



PROPOSED

K	AV	BM	17.05.19	Amendments as clouded
J	AV	BM	06.02.19	Gas cupboard amended to suit gas supply installer requirements
I	AV	BM	04.10.18	Enclosure to plant room updated Zinc cladding added to side of rooflights
H	AV	MT	14.05.18	Issued for construction
G	AV	MT	12.03.18	Dimensions and references added
F	AV	BM	15.09.17	Stage 4 general update
E	AV	BM	25/05/17	Revised Stage 4 Issue
D	AV	BM	28/04/17	Stage 4 Issue
C	AV	BM	10/02/17	Stage 3 Tender Issue
B	DOR	LB	21/01/15	Initial Tender Issue
A	DOR	GT	09/11/14	Preliminary Issue
Issue	Chkd	Drawn	Date	Description

Status	Job No.	Drwg No.	Issue
CONSTRUCTION	1209	152-03	K
Drawing	1:100@A3 1:50@A1		

NORTH ELEVATION

Project
KINGS CROSS BRIDGE
LONDON WC1X

latitude

Latitude Architects
15 Weller Street
London SE1 1QU
T +44 (0) 20 7234 0235
www.latitudearchitects.com