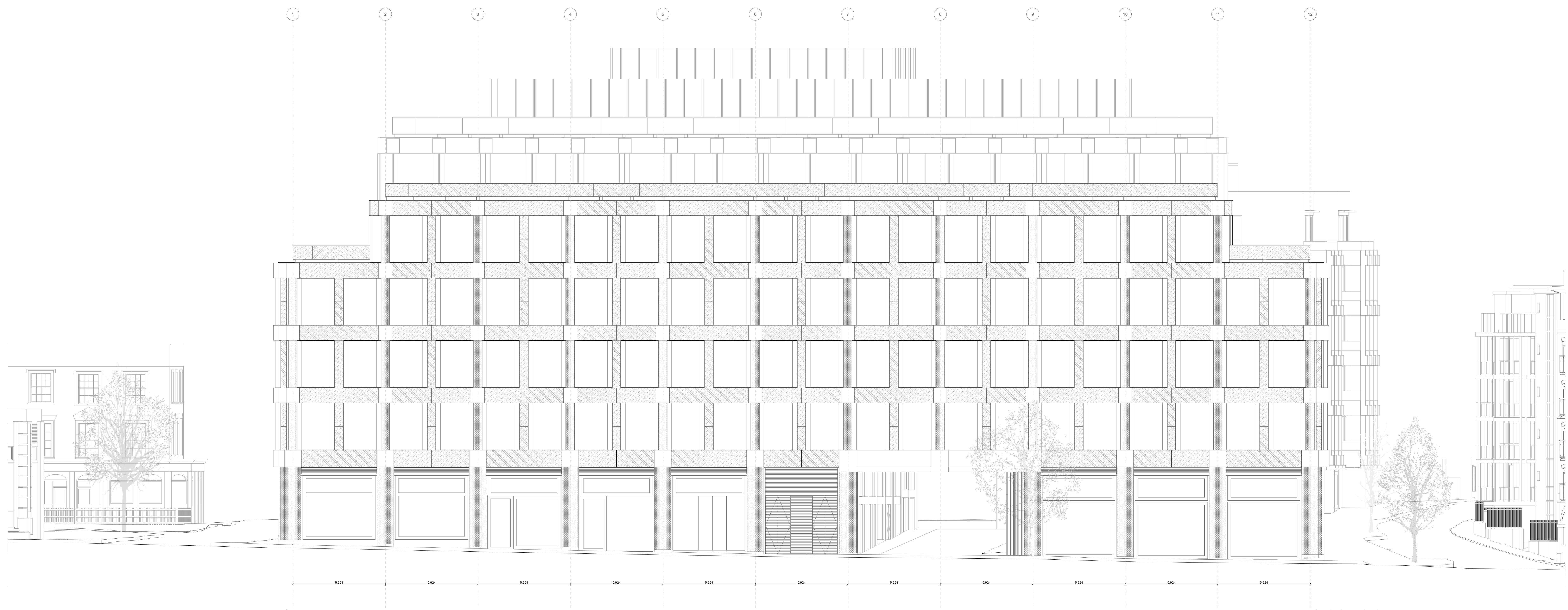


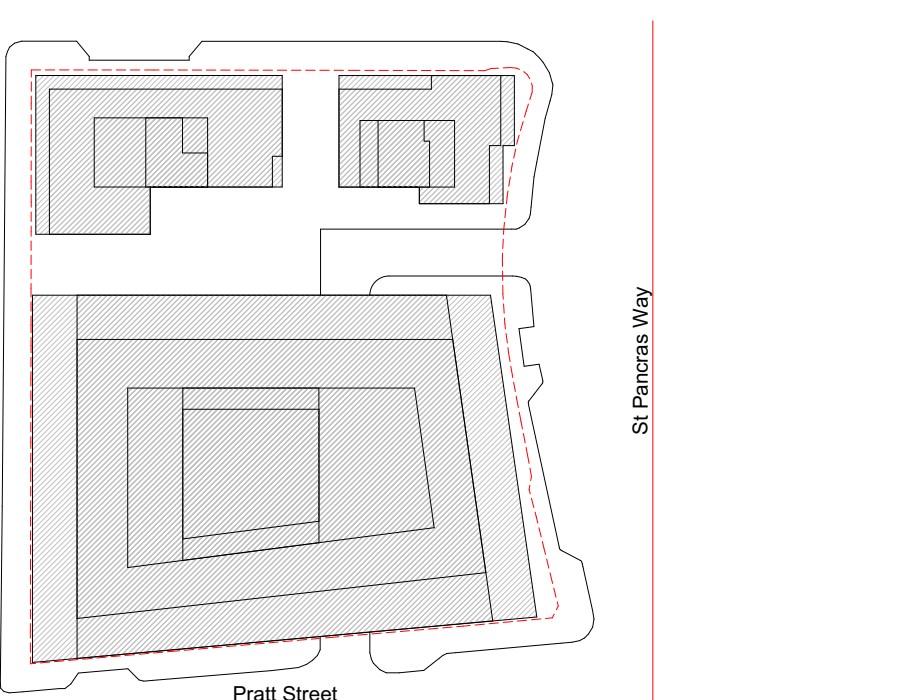
Elevation - St Pancras Way



Elevation - Pratt Street

INDEX	DATE	REASON FOR ISSUE	NAME
P01	06.08.19	Drawing Issue	JH
			JH

Caruso St John Architects



477 St Pancras Commercial Centre
GA - Elevation - St Pancras Way & Pratt St

Project No.	Location	Zone	Use	Phase	Area	Scale	Revision
477	CSJ	00	ZZ	EL	A	3301	S1 P02

Scale	Date	Author	Checked
1:100	01.08.2019	JH	RH

STAGE 03 ±0.00 = 0.00 AOD

Client: WRE, 26 Bruton Pl, Mayfair, London W1J 8NF
 Project manager: Blackburn & Co, No 1, Clink Street, London, SE1 9DG
 Architects: Caruso St John Architects LLP, 1 Cove Street, London E2 8AG, UK, +44 (0)20 7933 3161, london@carusostjohn.com
 Planning consultant: Gerald Evans, 72 Redbank Street, London, W1Q 6AY
 Structural engineer: AKT II, White Carter Factory 1 Old Street Yard London EC1Y 9AF
 Building services: Norman Delany Young, 4 Chiswell Street, London EC1Y 4UP, United Kingdom
 Quantity surveyor: Expens, Northwood, 5-23 Old Street London EC1Y 9RL
 Registered office: Caruso St John LLP is a limited liability partnership registered in England No. 02328819