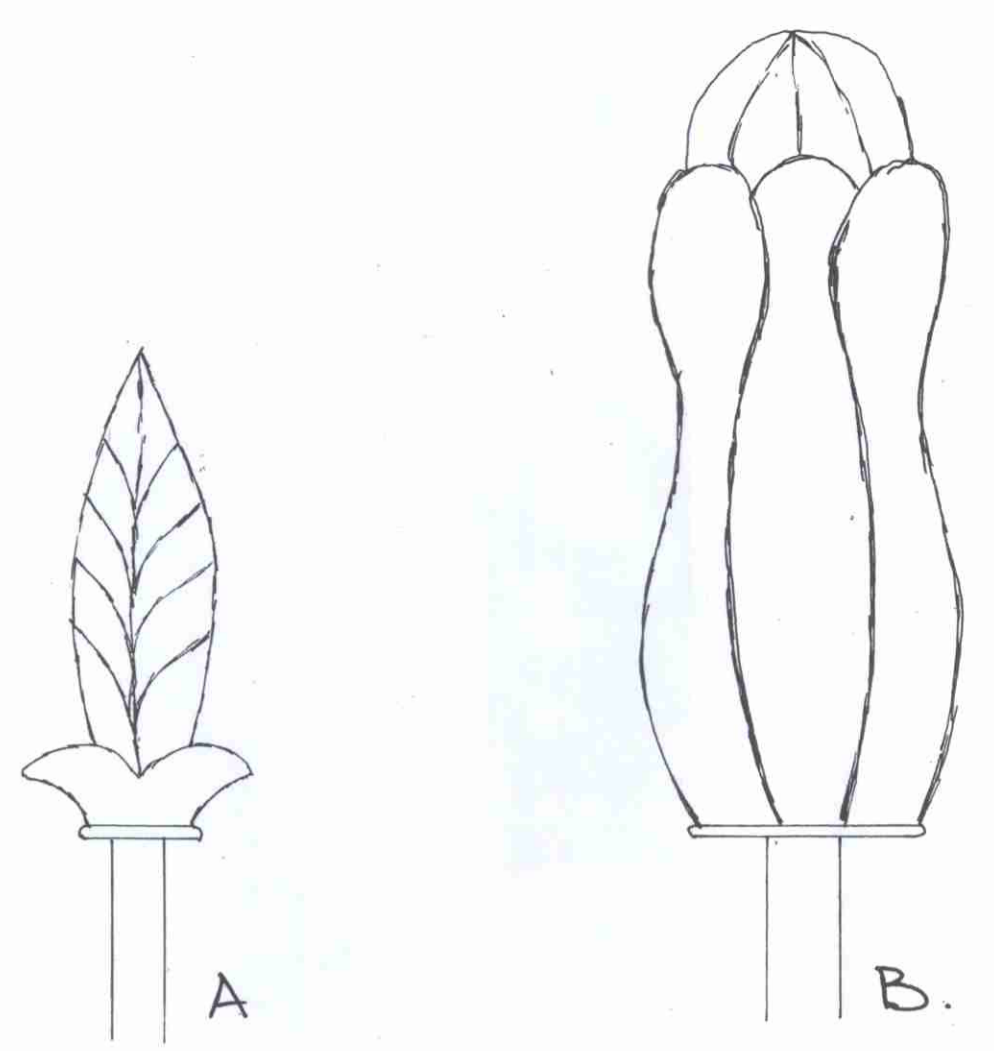


Proposed New Railings - Details

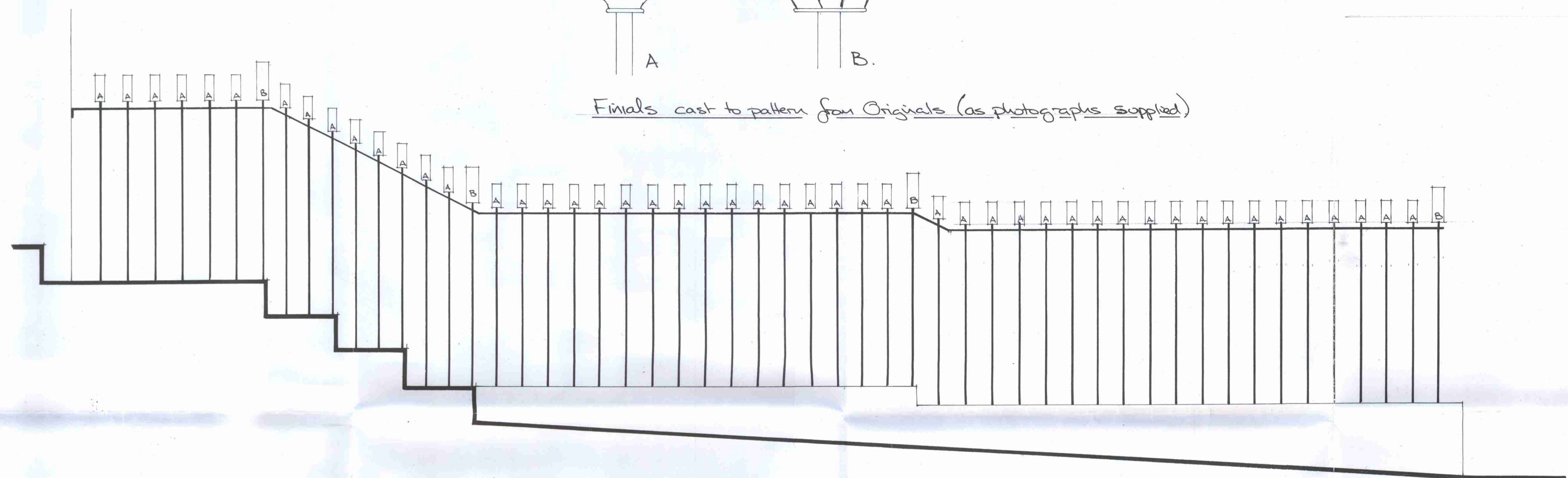
AT:- 72 Albert Street London N.W.8

EE:- Barbara Mills

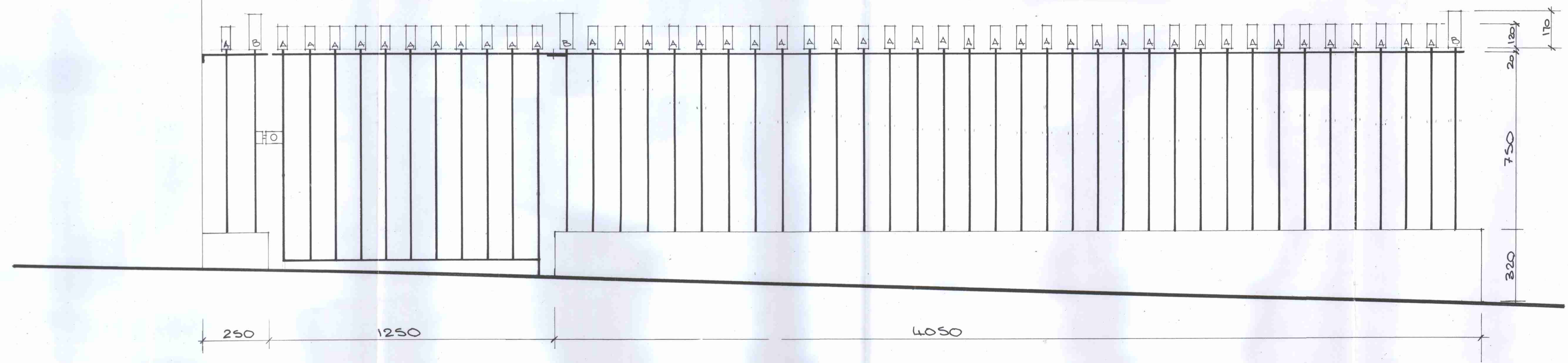
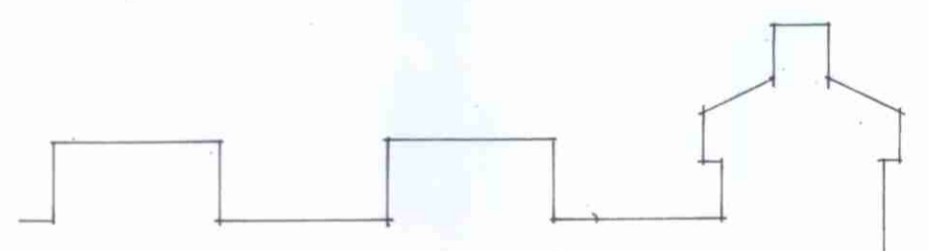
DES:- JM DATE:- Oct '02, Scale:- 1:10 = 1/2 F.S



Finials cast to pattern from Originals (as photographs supplied)



Side Elevation from N° 72 towards N° 70



Front Elevation

LONDON BOROUGH OF CAMDEN
TOWN AND COUNTRY PLANNING ACTS
03 DEC 2002
PLAN APPROVED
ON BEHALF OF THE COUNCIL

LONDON BOROUGH OF CAMDEN
ENVIRONMENT DEPT
9 OCT 2002
RECEIVED

L EX 0200 721

P EX 0200 720

M1732-01