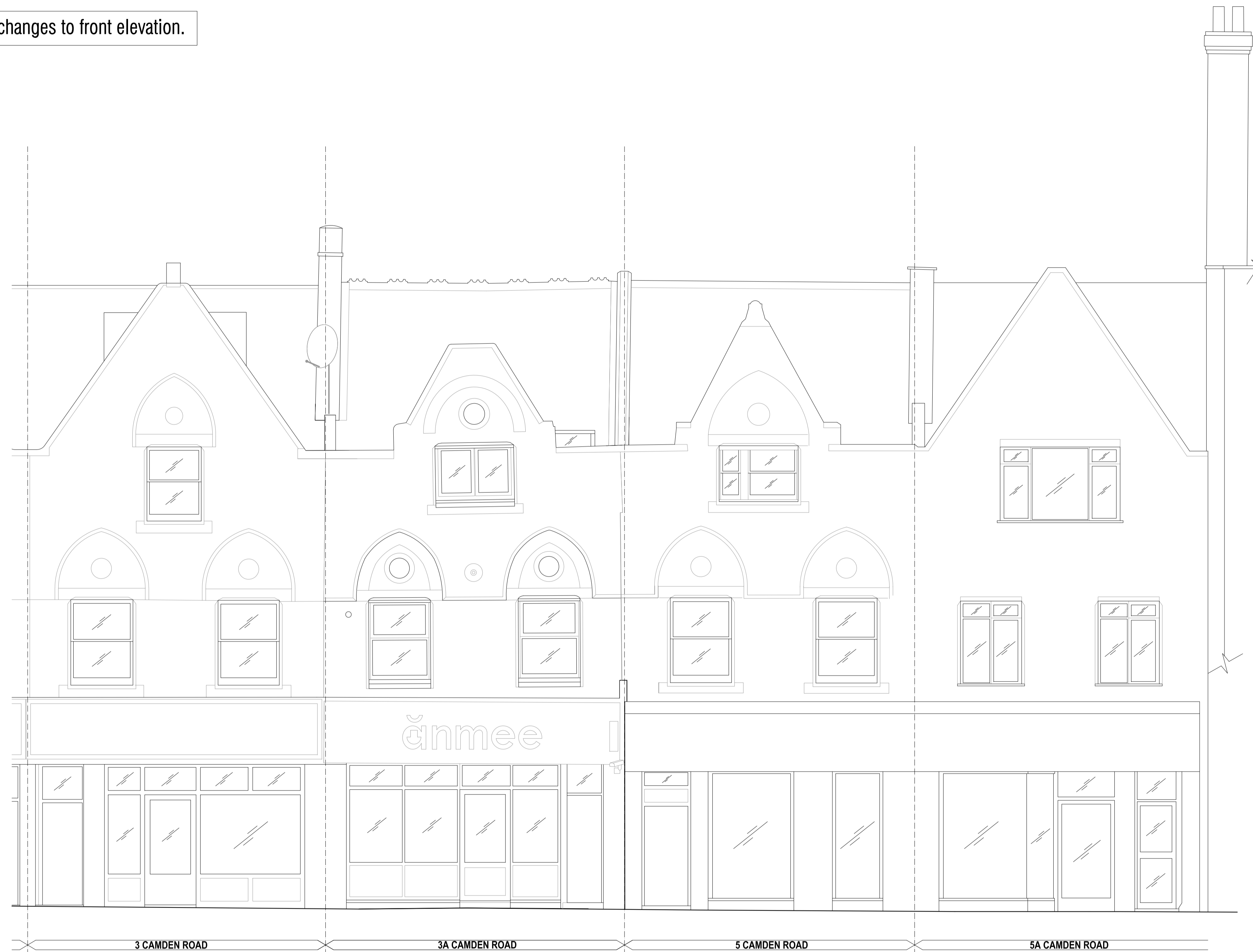


NOTE: No changes to front elevation.



ambigram architects

(a) Studio 2.04, 60 Gray's Inn Road London WC1X 8AQ
 (w) www.ambigramarchitects.com
 (e) info@ambigramarchitects.com

© Copyright 2019 ambigram architects Ltd

- NOTES
- Do not scale off these drawings. Dimensions govern.
 - All dimensions are given in millimetres (mm) unless otherwise noted.
 - All dimensions shall be verified on site before proceeding with the work contractor and before construction and fabrication commences.
 - Workmanship and materials to be in accordance with the relevant current British Standard Codes of Practice and the Local Authorities requirements.
 - During construction the contractor shall be responsible for maintaining the structure in a stable condition.
 - These drawings are to be read in conjunction with all other contract documentation.
 - If in doubt, ask!

Camden Road 5 Camden Road
 London NW1 9NX

Project

Proposed Front Elevation

Title

aa_1703

MJ

PL-01

Job number

Drawn

Revision

September 2019

Date

1:50_@A1

P201

1:100_@A3

Drawing no

Scale

PL-01	17-09-19	for planning	JP
PL-00	21-08-19	for planning	JP
Rev	Date	Reason for Issue	ch'd