

BEDFORD AVENUE/NORTH ELEVATION



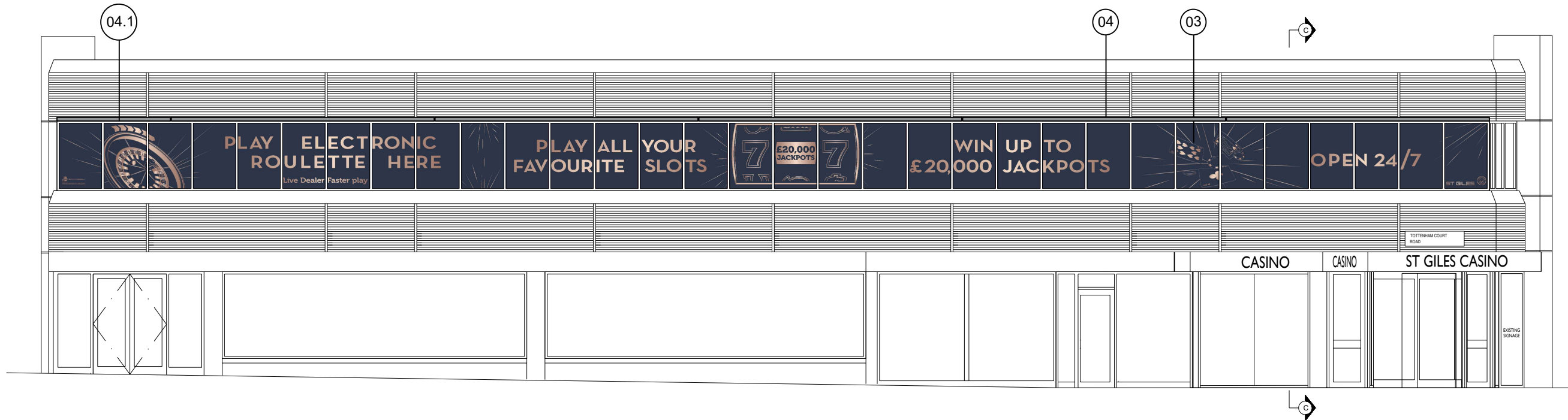
GREAT RUSSELL STREET/SOUTH ELEVATION

- 01 CONTRA-VISION VINYL SIGNAGE APPLIED TO GLAZING EXTERNALLY NON-ILLUMINATED. 4.050m to underside of sign at section A-A. 3.45m x 1.44m approx'
- 02 CONTRA-VISION VINYL SIGNAGE APPLIED TO GLAZING EXTERNALLY NON-ILLUMINATED. 4.400m to underside of sign at section B-B. 3.08m x 1.44m approx'
- 03 CONTRA-VISION VINYL SIGNAGE APPLIED TO GLAZING EXTERNALLY NON-ILLUMINATED. 4.400m to underside of sign at section C-C. 31.5m x 1.44m approx'
- 04 MICROLUX MINI TROUGH LIGHT BY PORTLAND LIGHTING. 5.540m to underside of sign at section A-A.

Length up to 5.8m per unit, 0.08m diameter. 300mm wall bracket tbc. 38.6m approx' total length coverage, requiring 8 units (subject to site dim):

- (04) 5 x 5.8m
- (04.1) 1 x 2.5m approx
- (04.2) 1 x 3.15m approx
- (04.3) 1 x 3.50m approx

WHITE IN COLOUR (299 cd/m²)



TOTTENHAM COURT ROAD/WEST ELEVATION

