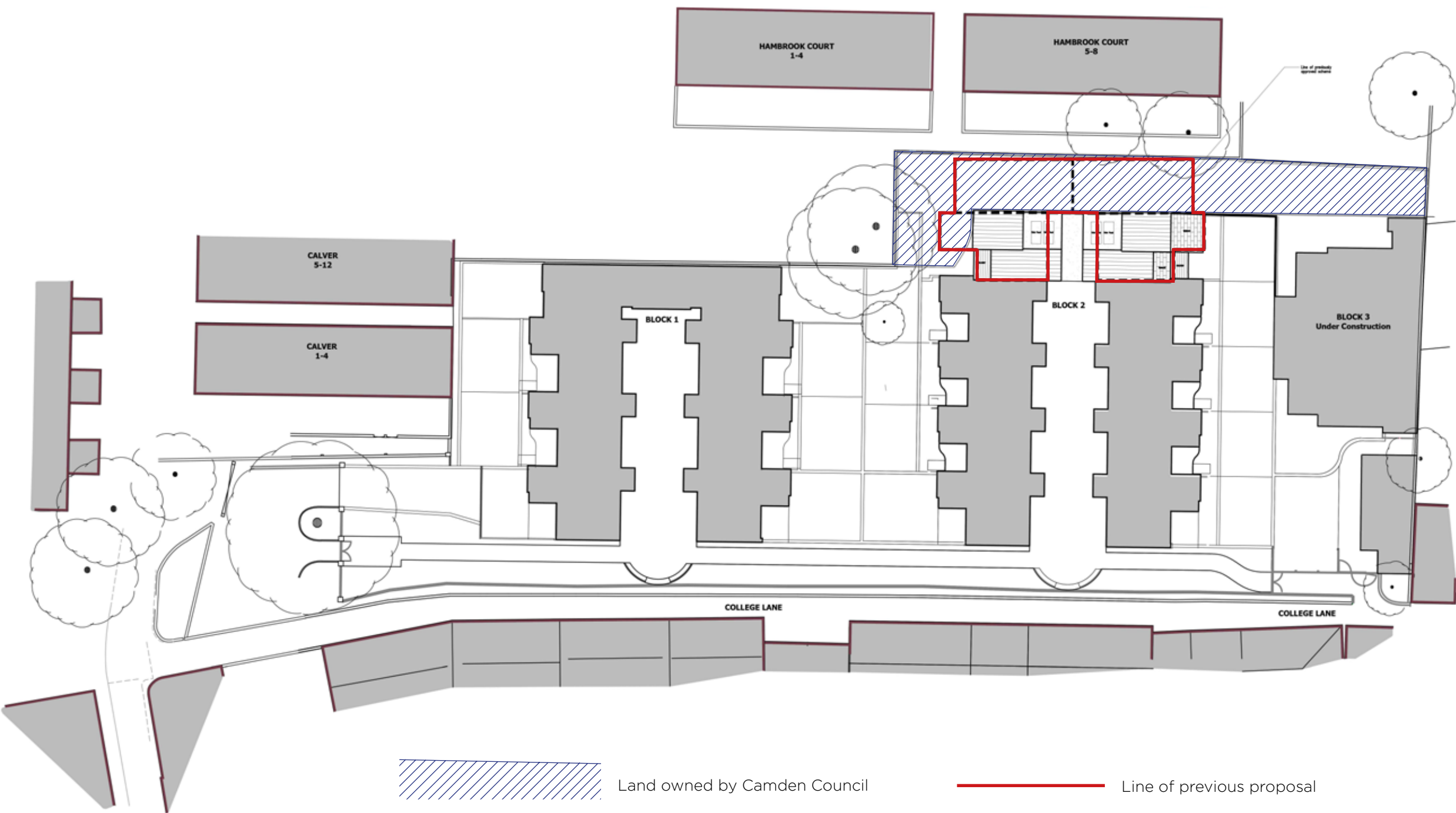
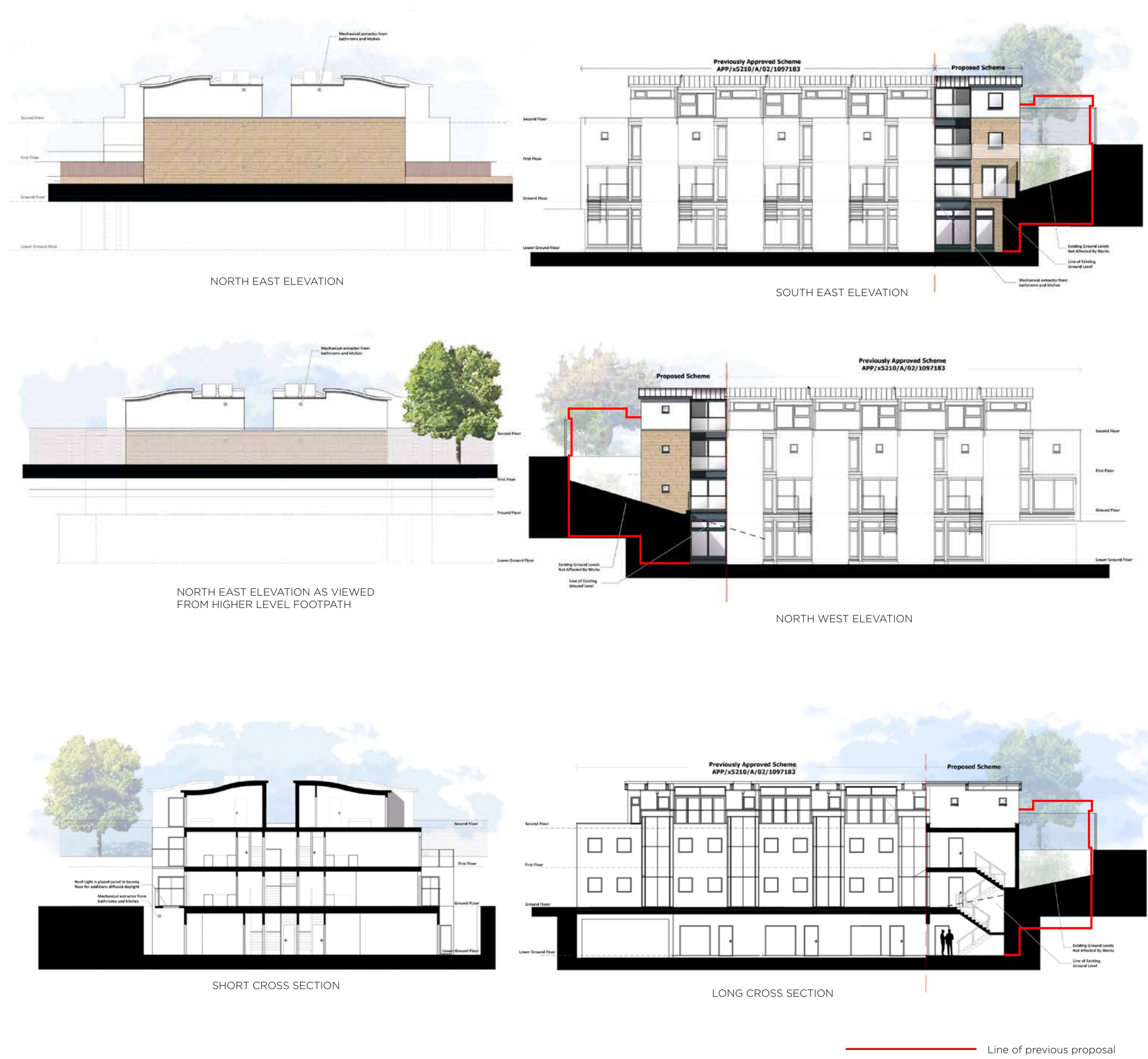


01 PROPOSALS

FOUR APARTMENTS



PERMITTED: 4 NO. HOUSES - TOTAL FLOOR AREA 856M²
PROPOSED: 4 NO. APARTMENTS - TOTAL FLOOR AREA 346M²



- Construction - Lightweight construction to minimise impact to local residents i.e. minimal vehicle movements, dust, noise and vibrations.
- Transport - No additional residents parking
- Reduction in building size & reduced proximity to neighbours
- Appearance - Materials to match existing development
- Time line - Construction period to be approximately 6 months

02 PROPOSALS

AFFORDABLE HOUSING



PERMITTED SCHEME



PROPOSED SCHEME



NORTH EAST ELEVATION



SOUTH WEST ELEVATION



NORTH EAST PARTIAL SECTION



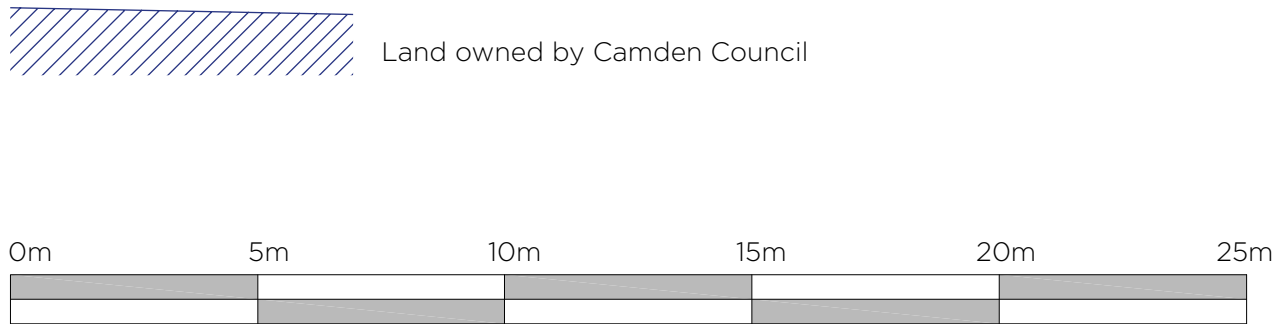
SOUTH WEST PARTIAL ELEVATION

- 8 apartments - 4no. 3 bed
- 4 no. 2 bed
- Reduction in size - building to sit wholly within the ownership boundary
- Lift included - access for all
- No additional windows to boundary elevation facing Lady Somerset Road
- Construction:
 - External envelope complete
 - Internal fit out only
 - Timeline from 4 months - subject to affordable housing provider

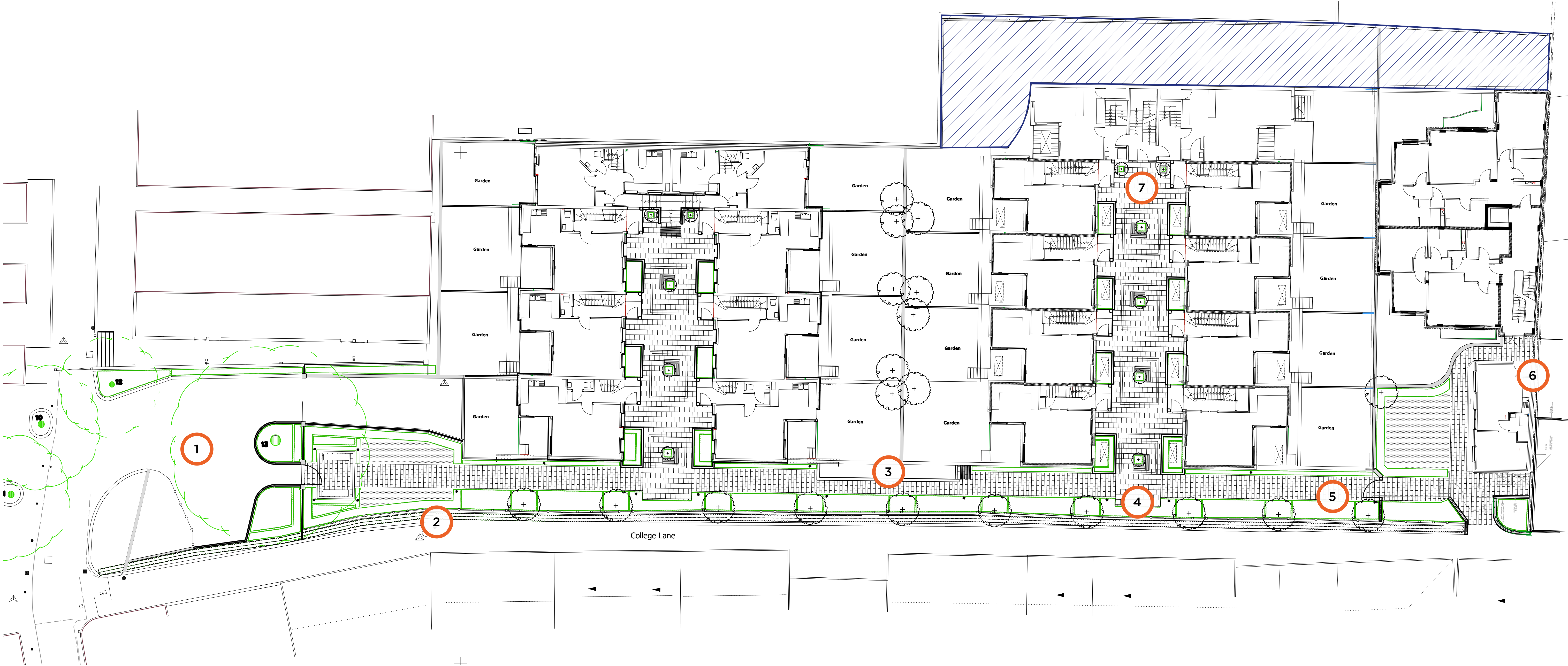
03
LANDSCAPE
PERMITTED



Note - Refer to number key on Landscape Proposed



04
LANDSCAPE
PROPOSED



Key

- 1 - Tarmac to entrance driveway to integrate with adjacent context
- 2 - Timber ship lap cladding of concrete retaining wall
- 3 - Means of escape stair revised

- 4 - Basement ventilation integrated into the landscape
- 5 - Pathway straightened
- 6 - Inclusion of utility cupboard
- 7 - Landscaping revised to entrance of the proposed apartments

Land owned by Camden Council

