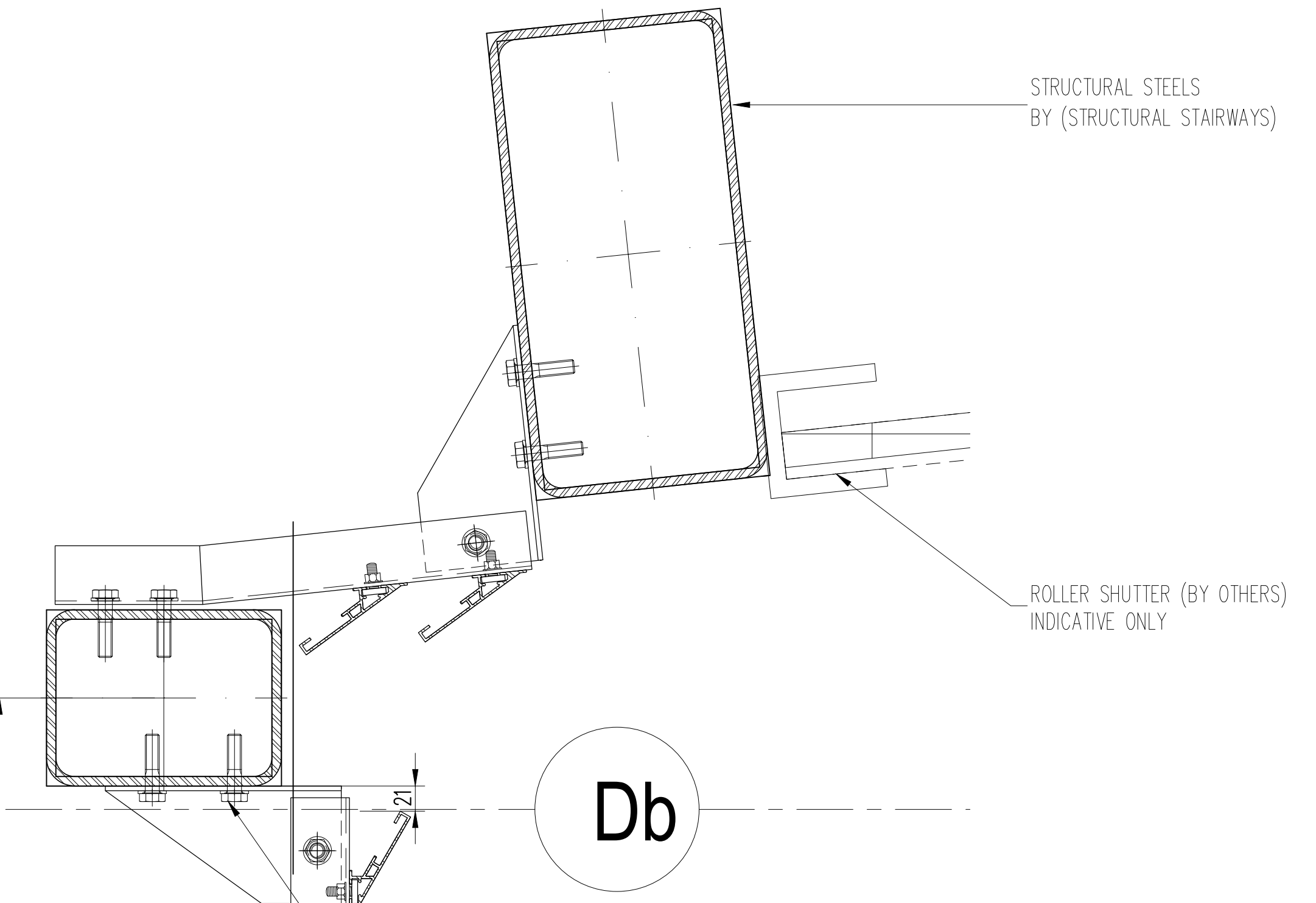


8



STRUCTURAL STEELS  
BY (STRUCTURAL STAIRWAYS)

ROLLER SHUTTER (BY OTHERS)  
INDICATIVE ONLY

Db

1050

M12x30mm HEX HEAD BOLT  
FINISH-GALVANISED

1310

LOUVRE SUPPORT CHANNELS  
MATERIAL-3mm GALV. STEEL  
FINISH-PPC RAL 7022 (UMBRA GREY)

NOTE: LOUVRES, FEATURE CHANNEL,  
AND DOORS FINISHES  
TO MATCH APPROVED SAMPLES

**Note :-**  
This drawing must not be scaled. All dimensions and levels must be checked on site and any discrepancies reported to the designers prior to manufacture.  
This drawing is the copyright of Emtec Products Ltd. It can be used only by this client and on this project as shown in the title block below.

02	COMMENTS INCORPORATED	29.06.19
01	COMMENTS INCORPORATED	12.06.19
00	ISSUED FOR APPROVAL	12.05.19
no.	issued	date

FOR APPROVAL

**EMTEC**  
EMTEC PRODUCTS LTD  
Unit L, Turn Pike Way, Cressex Industrial Estate High Wycombe,  
Buckinghamshire. HP12 3FT  
TEL: 020 8848 3031 www.emtecproducts.co.uk

S-2 BUILDING LOUVRE SCREEN  
HORIZONTAL SECTIONS  
SHEET-4

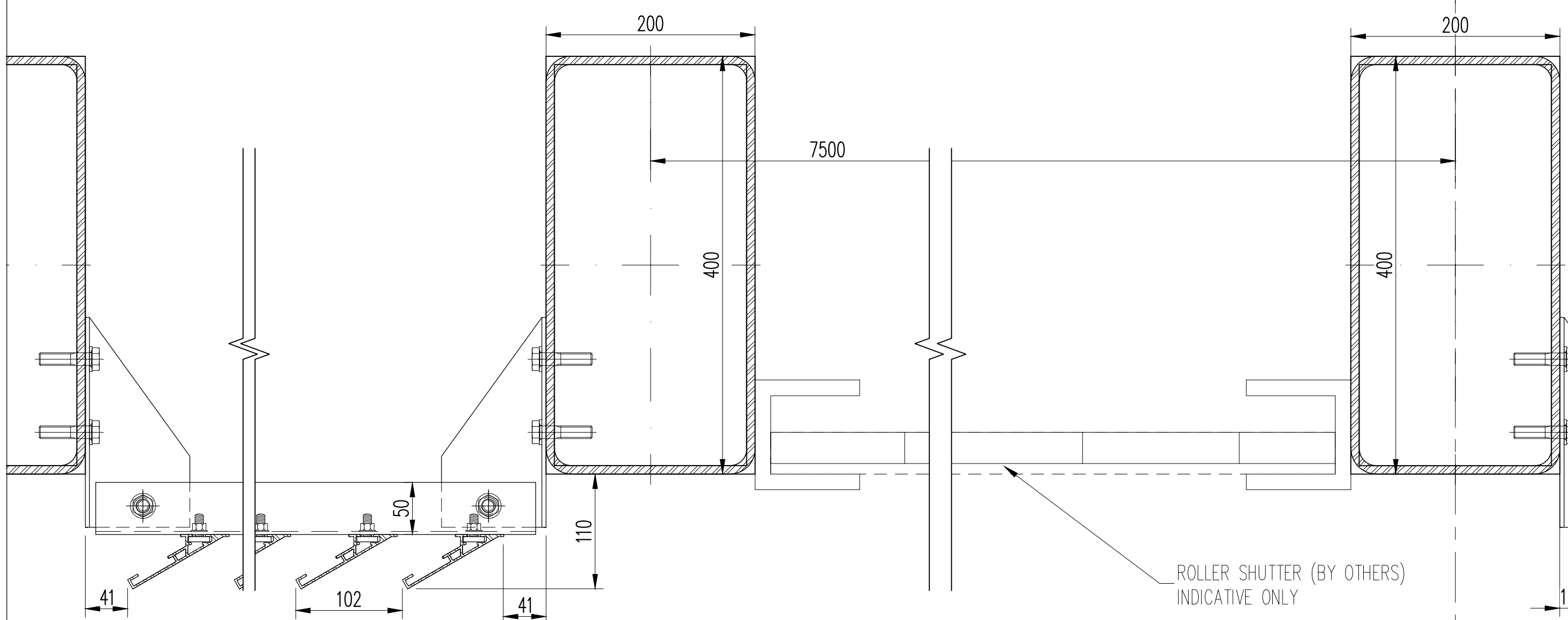
Project  
KINGS CROSS T-ZONE

Client  
STRUCTURAL STAIRWAYS

File no.	Date	Works No.	Quality level
QF9377	12.05.19	PF	1

Scale	Drawn By	Design Auth	Approved
AS NOTED	E.A	E.A	S.E

Drawing number	Rev
KXC-T2-001-Y-SSL-28-572	02



ROLLER SHUTTER (BY OTHERS)  
INDICATIVE ONLY

EXTRUDED ALUMINIUM LOUVRE FINIS  
MANUFACTURED FROM MIN. 90% RECYCLED ALUMINIUM  
PPC TO A RAL 1035 PEARL BEIGE

01  
572  
LOUVRE AND ROLLER SHUTTER INTERFACE DETAIL (PLAN)  
1:4