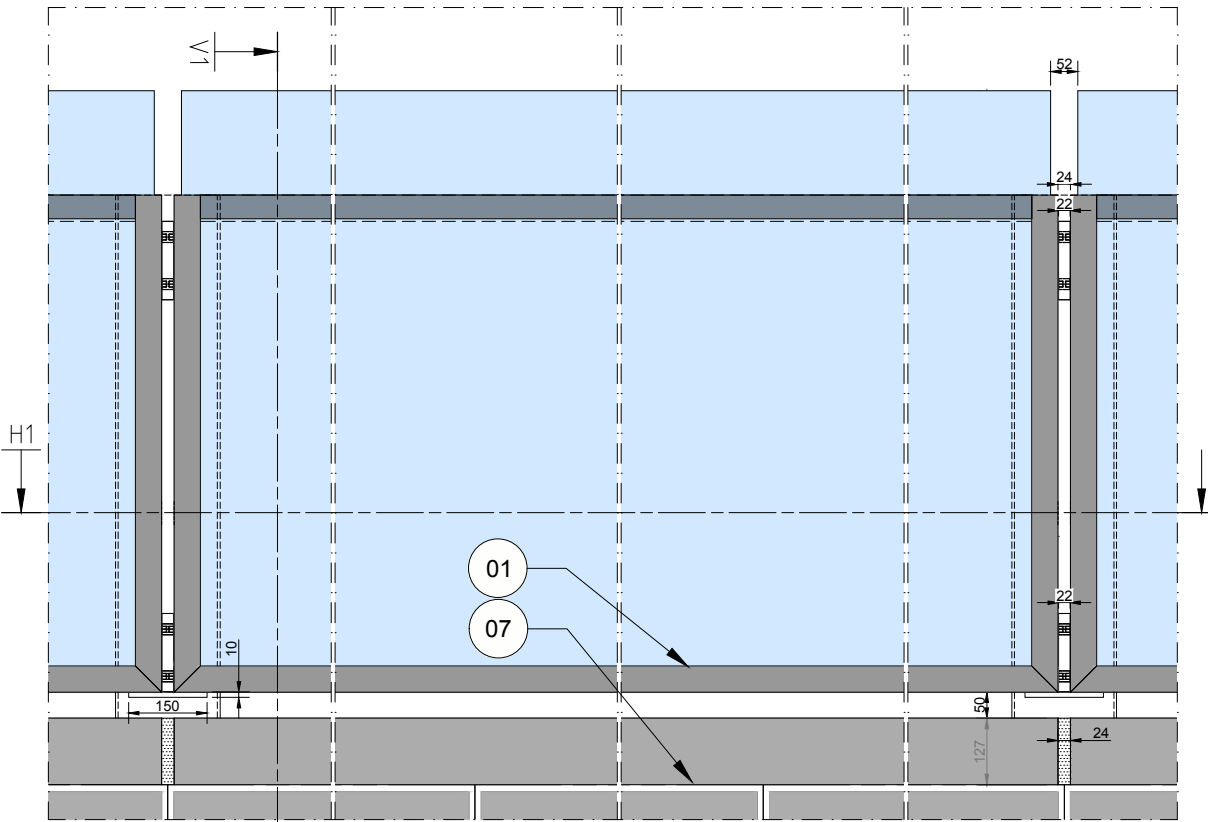
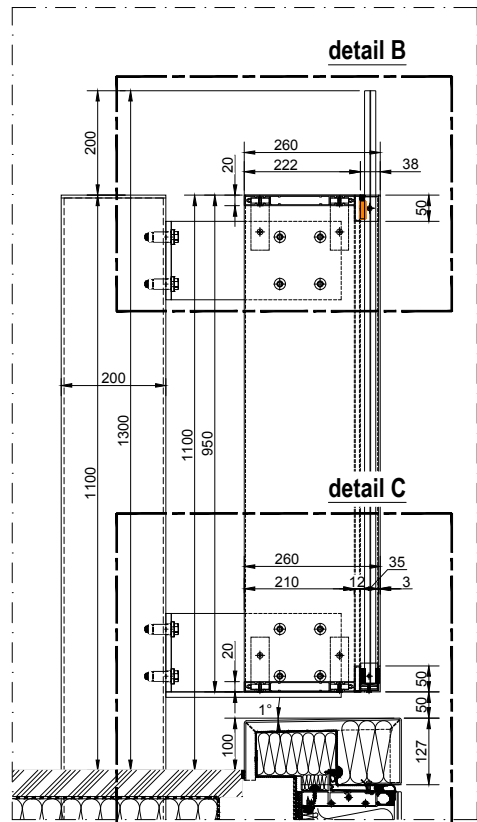


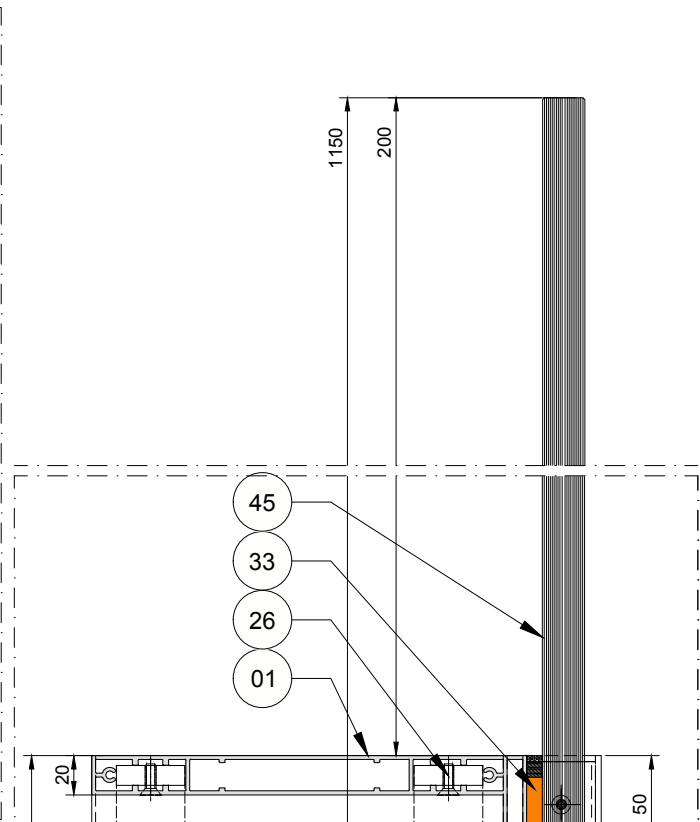
ELEVATION



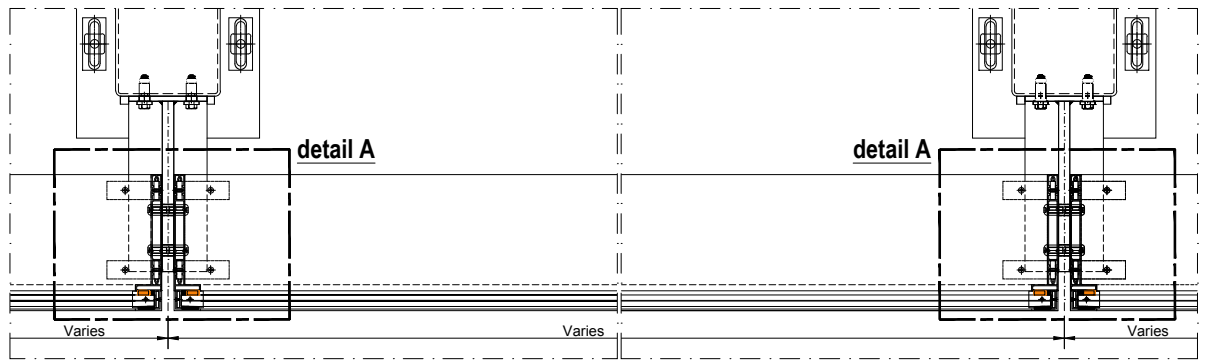
SEZ. V1



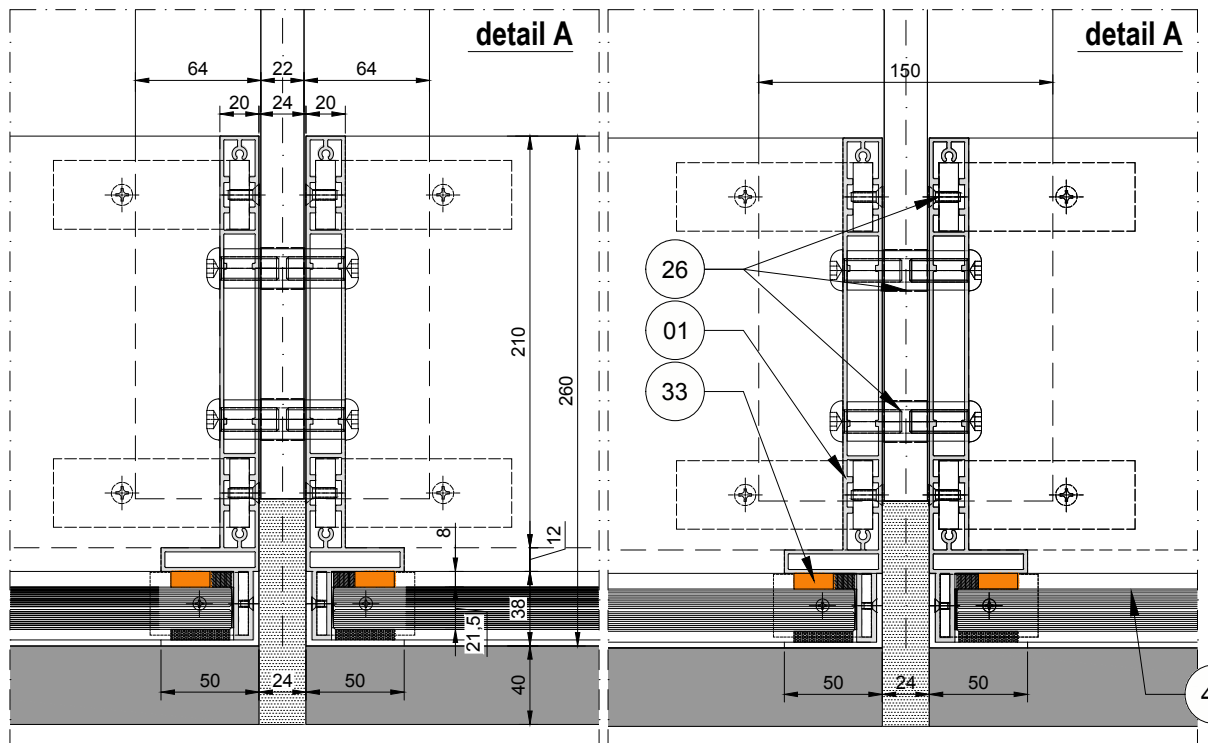
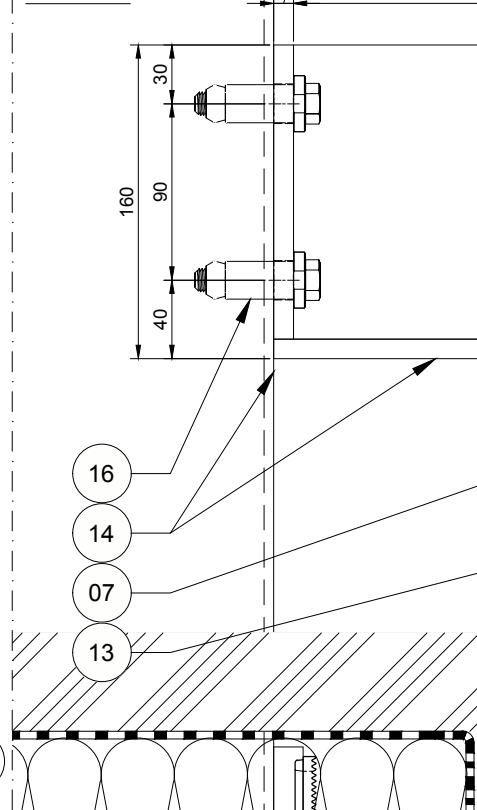
detail B



SEZ. H1

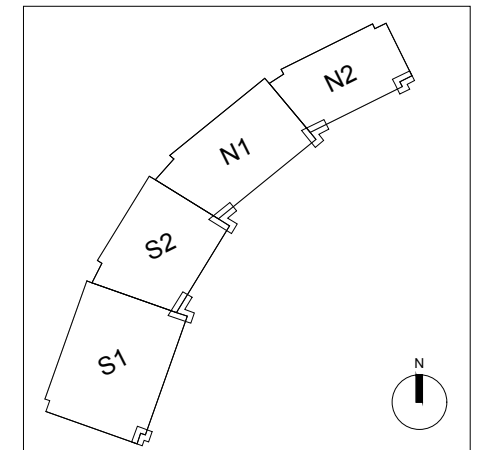


detail C



MATERIAL KEY LIST		Issue:	Job:	Rev.:
ALUMINIUM COMPONENTS		1:32	160070	00
01	ALUMINIUM PROFILE PPC RAL 7022	File : KXC-T2-001-Y-FCC-21-VD156	Scale : 1:50 @ A3	INFORMATION
02	ALUMINIUM PROFILE BRONZE ANODISED			
03	ALUMINIUM SHEET/PROFILE NATURAL ANODISED			
04	ALUMINIUM BRACKETS MILL FINISH			
05	ALUMINIUM SHEET BRONZE ANODISED			
06	PERFORATED ALUMINIUM SHEET BRONZE ANODISED			
07	ALUMINIUM SHEET PPC RAL 7022			
08	ALUMINIUM BRACKETS BRONZE ANODISED			
09	ALUMINIUM BRACKET PPC RAL 7022			
10	ALUMINIUM SHEET/PROFILE BLACK ANODISED			
GALVANIZED STEEL COMPONENTS		Issued for :	VD156	Draw.:
11	HOT DIPPED GALVANIZED STEEL CAST-IN CHANNEL			
12	HOT DIPPED GALVANIZED STEEL BRACKET/REINFORCEMENT			
13	GALVANIZED STEEL SHEET PPC RAL 7022			
14	HOT DIPPED GALVANIZED AND PAINTED STEEL PPC RAL 7022			
15	GALVANIZED STEEL SHEET			
16	HOT DIPPED GALVANIZED FIXING	Description	East Balustrade - Details	Approved by:
STAINLESS STEEL COMPONENTS				
21	STAINLESS STEEL BRACKET AISI 316			
22	STAINLESS STEEL ROD AISI 316			
23	STAINLESS STEEL			
24	STAINLESS STEEL BRACKET AISI 304			
25	STAINLESS STEEL FIXING SCREW			
26	STAINLESS STEEL FIXING SCREW ACID ETCHED (BLACK)			
27	STAINLESS STEEL BRACKET AISI 316 - BLACK	L. CENNI	PFE	Date
EPDM / SILICONE COMPONENTS				
31	BLACK EPDM GASKET			
32	BLACK SILICONE			
33	BLACK STRUCTURAL SILICONE			
34	BLACK EPDM MEMBRANE			
35	EPDM COMPATIBLE WITH STRUCTURAL SILICONE	Rev	00	24-07-2019
GLASS TYPES				
41	GL-1 DGU VISION GLASS CLADDING TYPE 1-2 (SEE GLASS TYPE SCHEDULE)			
42	GL-2 SGU SPANDREL GLASS CLADDING TYPE 1 (SEE GLASS TYPE SCHEDULE)			
44	GL-4 DGU SPANDREL GLASS CLADDING TYPE 2 (SEE GLASS TYPE SCHEDULE)			
45	GL-5A SGU BALUSTRADE GLASS CLADDING TYPE 1 (SEE GLASS TYPE SCHEDULE)			
46	GL-6 DGU VISION GLASS CLADDING TYPE 4A-4B-4C (SEE GLASS TYPE SCHEDULE)			
50	GL-10 DGU VISION GLASS CLADDING TYPE 7 (SEE GLASS TYPE SCHEDULE)			
52	GL-10A DGU VISION GLASS CLADDING TYPE 7 (SEE GLASS TYPE SCHEDULE)			
VARIOUS MATERIAL				
61	MINERAL WOOL			
62	FIRE AND AIR SEAL BARRIER			
64	PLASTIC SHIM / THERMAL BREAK			
65	ALU FIXINGS			
71	ELECTRIC CHAIN ACTUATOR			
81	INSECT MESH			
98	INTERNAL CEILING AND FINISH FLOOR BY OTHERS			
99	VARIOUS BY OTHERS			

Key Map



East Balustrade
VERTICAL AND HORIZONTAL DETAIL

Project : King's Cross - T2/T3
London

Architect : Benmetts Associates
Client : BAMC
Package : FOCCHI

Issue: 1:32
Job: 160070
Rev.: 00

File : KXC-T2-001-Y-FCC-21-VD156
Scale : 1:50 @ A3
INFORMATION
VD156
Draw.:

Approved by: L. CENNI
Description: East Balustrade - Details
Date: 24-07-2019
Rev: 00

Title :