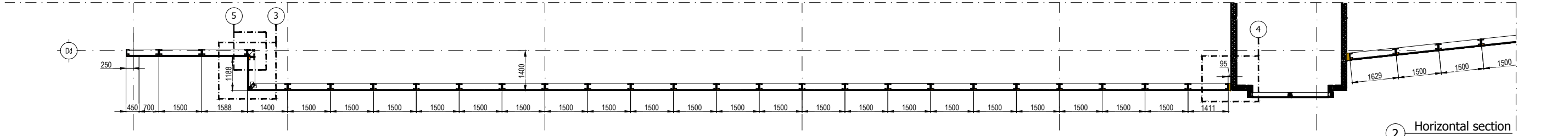
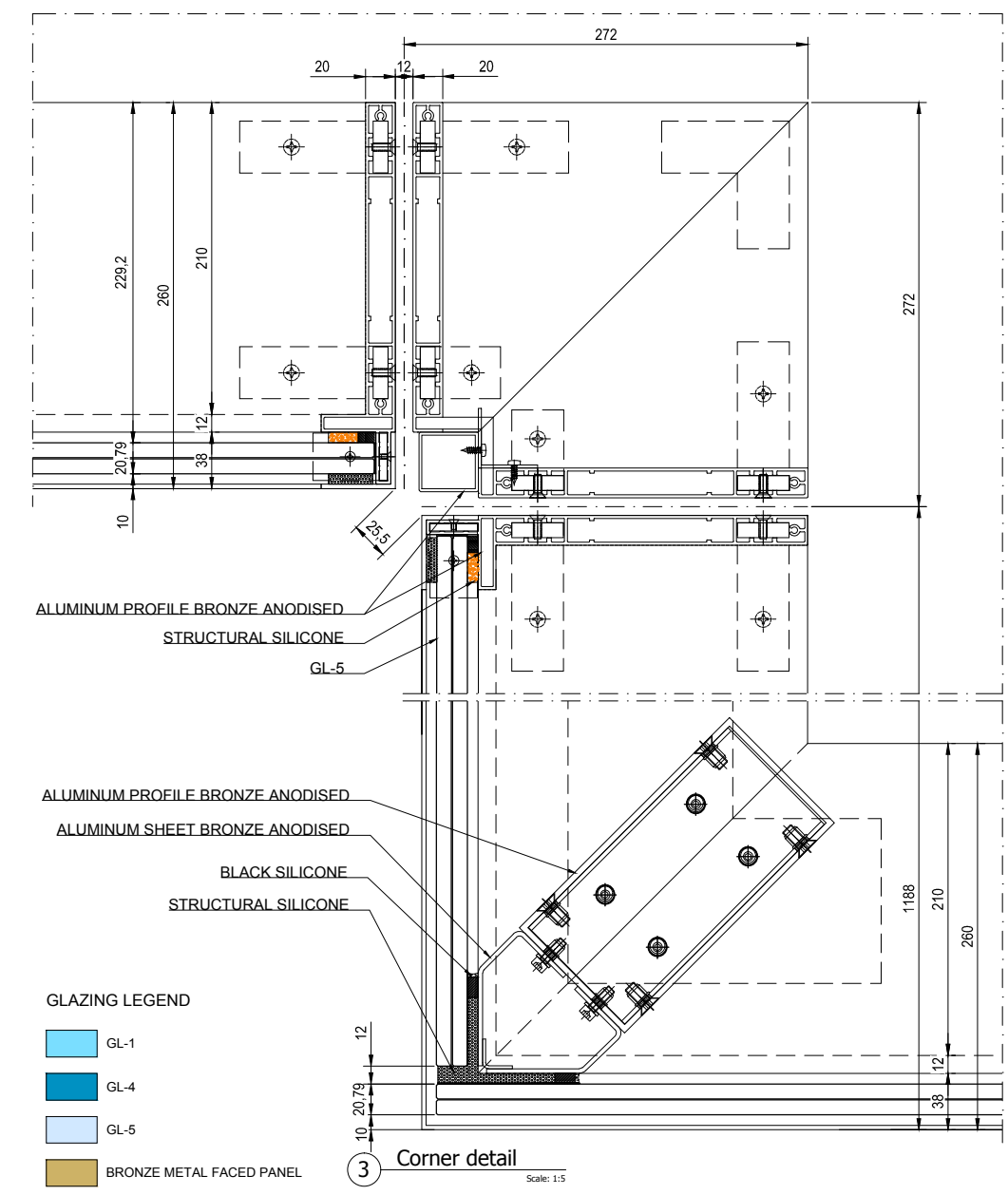


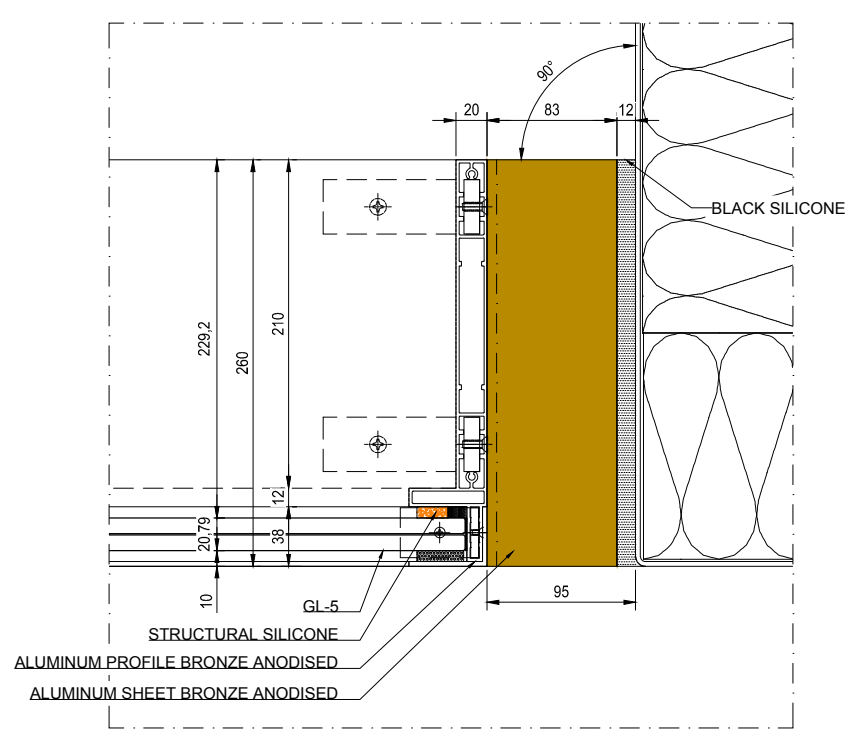
1 Elevation
Scale: 1:150



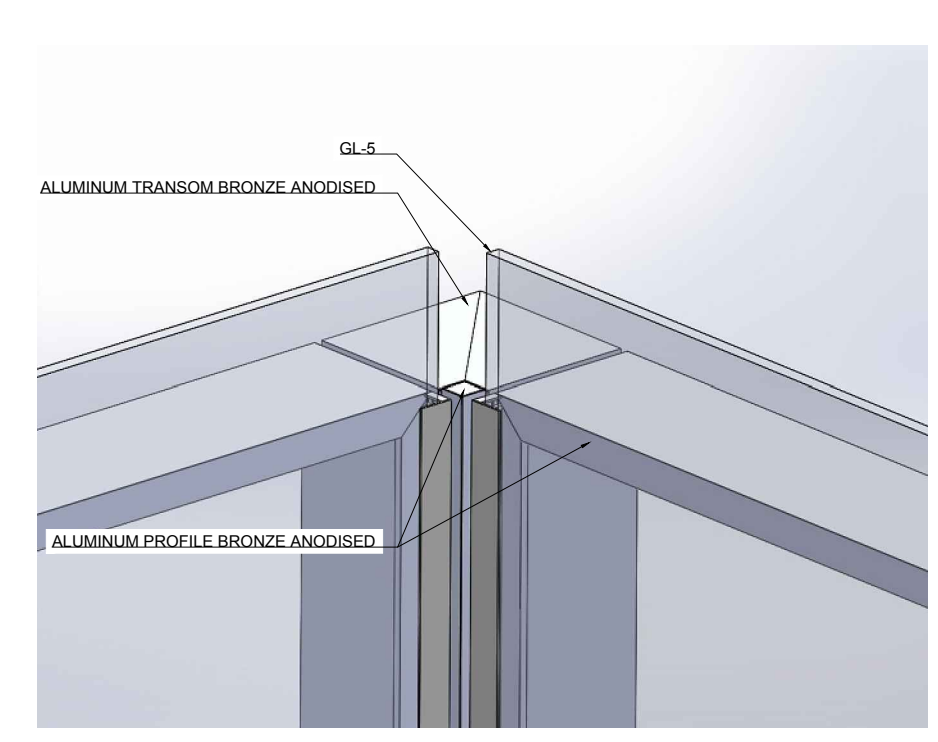
2 Horizontal section
Scale: 1:150



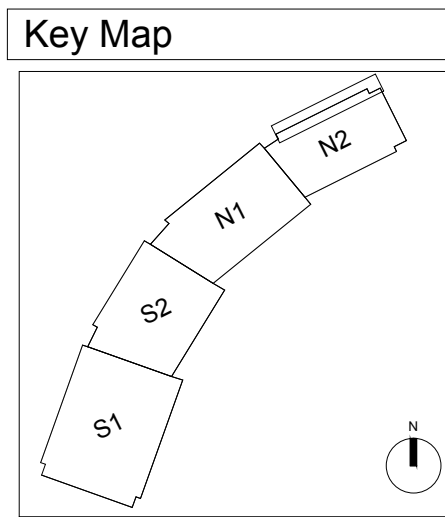
3 Corner detail
Scale: 1:5



4 Corner detail
Scale: 1:5



5 3D Corner detail
Scale: 1:5



Key Map

Issue: I-31	Job: 160070	Rev.: 00
File: KXC-T2-001-Y-FOCC-21-EN20B	Issued for: INFORMATION	Drw.: EN20B
Description: Block N2 Type 2 West Balustrades	Scale: 1:150 @ A3	
Approved by: L. CENNI	Drawn by: PFE	
Date: 02-07-2019	Rev: 00	
Project: King's Cross - T2/T3 London	Architect: Bernetts Associates	Client: BAMC
		Package: FOCCHI
BLOCK N2 ELEVATION		
WEST BALUSTRADES - LEVEL 9		
FOCCHI		