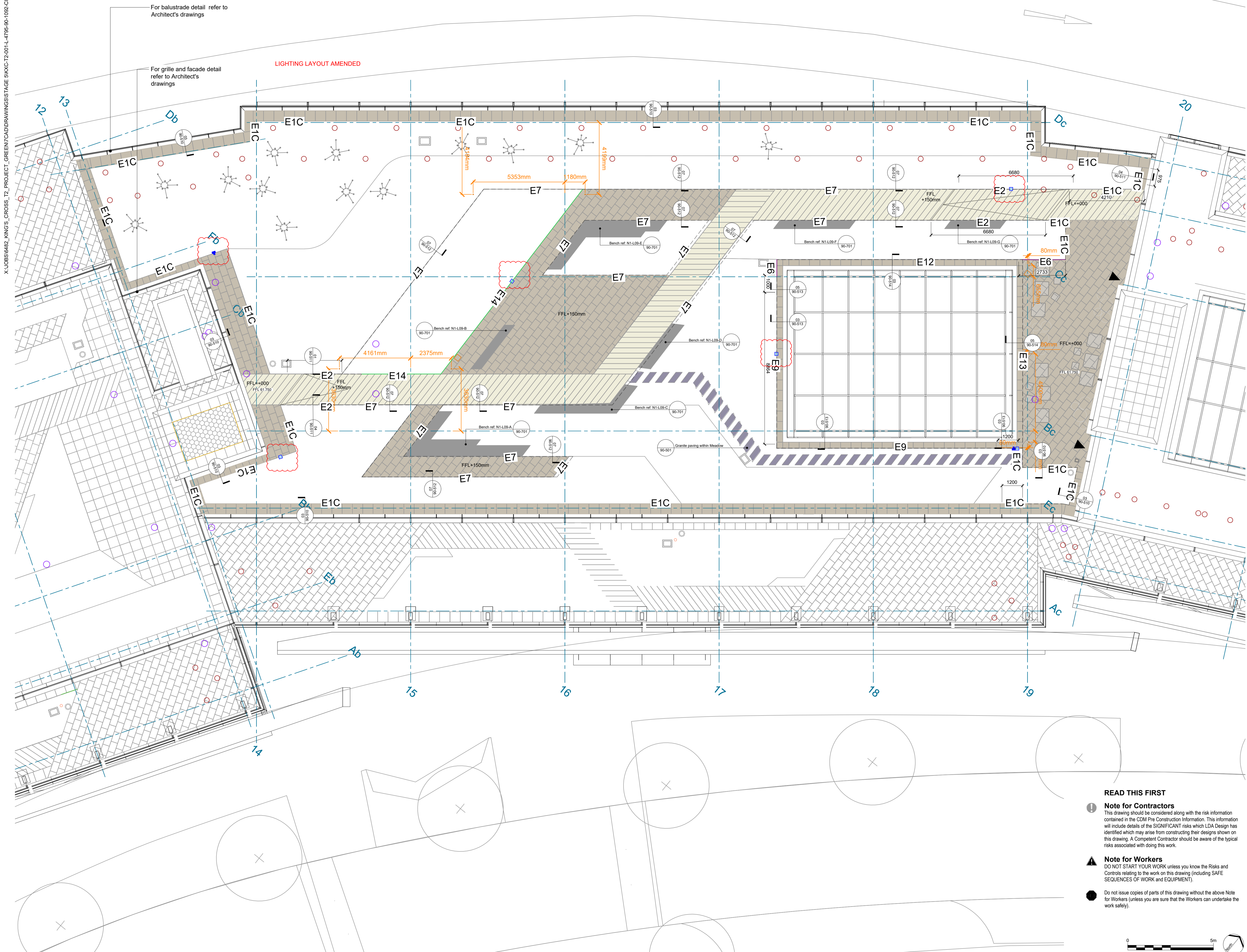


X:\00516482\_KINGS\_CROSS\_T2\_PROJECT\_GREENING\CAD\DRAWINGS\STAGE 5\KXC-T2-001-L-4795-90-1092-C02.DWG



For balustrade detail refer to Architect's drawings

For grille and facade detail refer to Architect's drawings

LIGHTING LAYOUT AMENDED

- LEGEND
- Pre-cast concrete plank  
Detail Ref: 90-500
  - Concrete flag paver  
Detail Ref: 90-500
  - Granite path through meadow  
Detail Ref: 90-501
  - Concrete stepping stone within gravel path  
Detail Ref: 4/90-501
  - Concrete paver to lift over-run  
Detail Ref: 90-501
  - Fixed Bench; Detail Ref: 90-520  
Bench Schedule: KXC-T2-001-L-4795-90-700 to 701
  - Steel edge (height varies); Edges Plan: 90-12Z1; Detail Ref: 90-510 to 514
  - Movable furniture  
Spec. Ref: Q50 225A
  - Movable steel planter;  
Detail Ref.: 90-521
  - Indicative exterior lighting feature to lighting consultants design
  - Concrete step paver step at 150mm high planter; Detail Ref. 07/90-510
  - Davit socket & abseil anchor location to Architect's detail
  - Water hose point to Contractor's/Landscape Contractor's detail (exact location tbc)
  - Irrigation valve box to Landscape Contractor's detail (exact location tbc)
  - Single power outlet & Switch Socket Outlet on galv. steel post in planter. Detail Ref. 06/90-500
  - Double power outlet on galv. steel post in planter. Detail Ref. 06/90-500
  - Rain Water Outlet to Architect's detail
  - Access
  - Emergency access

- NOTES:
1. Refer to drawing KXC-T2-001-L-4795-20-1ZZ for Roof Plan General Arrangement
  2. Refer to drawing KXC-T2-001-L-4795-90-1ZZ Hardworks General Arrangement (all terraces)
  3. Refer to drawing KXC-T2-001-L-4795-91-1ZZ for Softworks General Arrangement
  4. Refer to drawing KXC-T2-001-L-4795-90-1ZZ1 for Edges General Arrangement
  5. Refer to KXC-T2-001-L-4795-90-500 Series of drawings for typical Hardworks Details
  6. Refer to drawings KXC-T2-001-L-4795-90-700 to 701 for Bench Schedules
  7. For balustrade, grille, and access hatch details refer to Bennetts Associates information
  8. For all lighting refer to Mike Grubb Studio information
  9. For all roof services layouts and details refer to BAM information
  10. For maintenance information and davit locations refer to Alltech information.
  11. For Outlet Power layout and specification refer to Contractors shop drawings.

C02	Power Outlet Location amended	BC	21.08.19
C01	Stage 5 Construction Issue	RA	03.05.19
T03	Stage 4 - Tender Updates	RA	05.10.18
T02	Movable furniture and planters to updated	RA	03.06.16
T01	Stage 4 - First Issue	RA	06.05.16
P01	Stage 3	RA	25.11.15
REV.	DESCRIPTION	APP.	DATE

**LDA DESIGN**

PROJECT TITLE  
KINGS CROSS CENTRAL T2

DRAWING TITLE  
General Arrangement - Hardworks  
Block N1 - Level 09

ISSUED BY	London	T: 020 7467 1470	
DATE	November 2015	DRAWN	RC
SCALE:RA1	1:100	CHECKED	BE
STATUS	Construction	APPROVED	RA

DWG. NO KXC-T2-001-L-4795-90-1092

No dimensions are to be scaled from this drawing. All dimensions are to be checked on site. Area measurements for indicative purposes only.

© LDA Design Consulting Ltd. Quality Assured to BS EN ISO 9001 : 2008  
Sources: Ordnance Survey

- READ THIS FIRST**
- Note for Contractors**  
This drawing should be considered along with the risk information contained in the CDM Pre Construction Information. This information will include details of the SIGNIFICANT risks which LDA Design has identified which may arise from constructing their designs shown on this drawing. A Compliant Contractor should be aware of the typical risks associated with doing this work.
  - Note for Workers**  
DO NOT START YOUR WORK unless you know the Risks and Controls relating to the work on this drawing (including SAFE SEQUENCES OF WORK AND EQUIPMENT).
  - Do not issue copies of parts of this drawing without the above Note for Workers (unless you are sure that the Workers can undertake the work safely).

