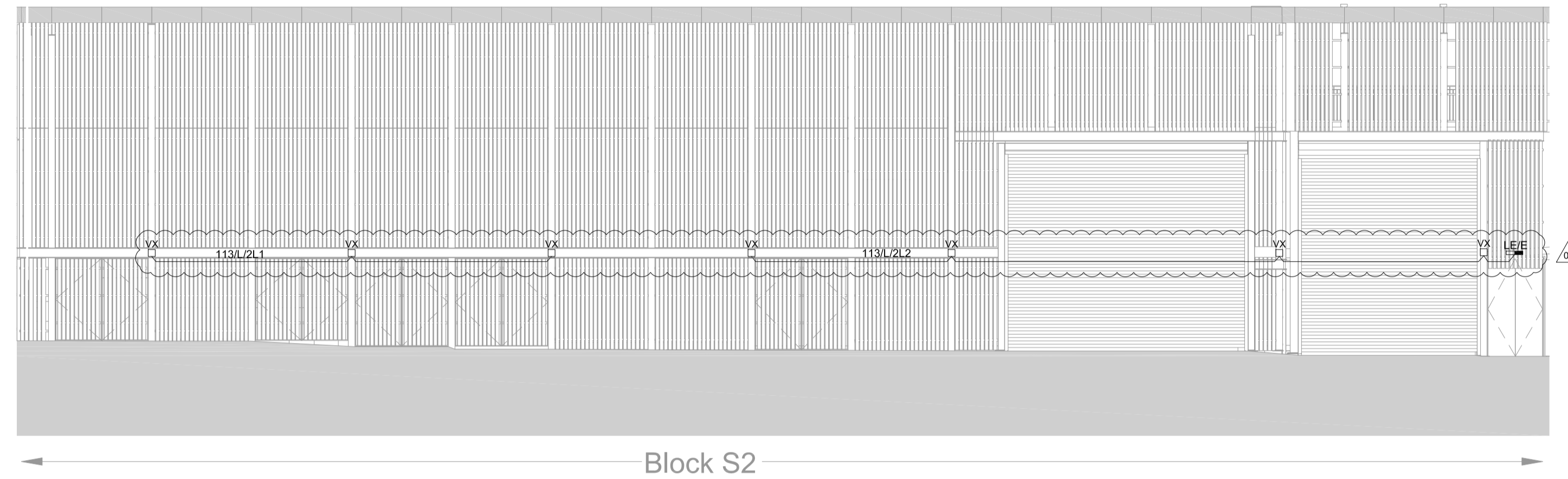
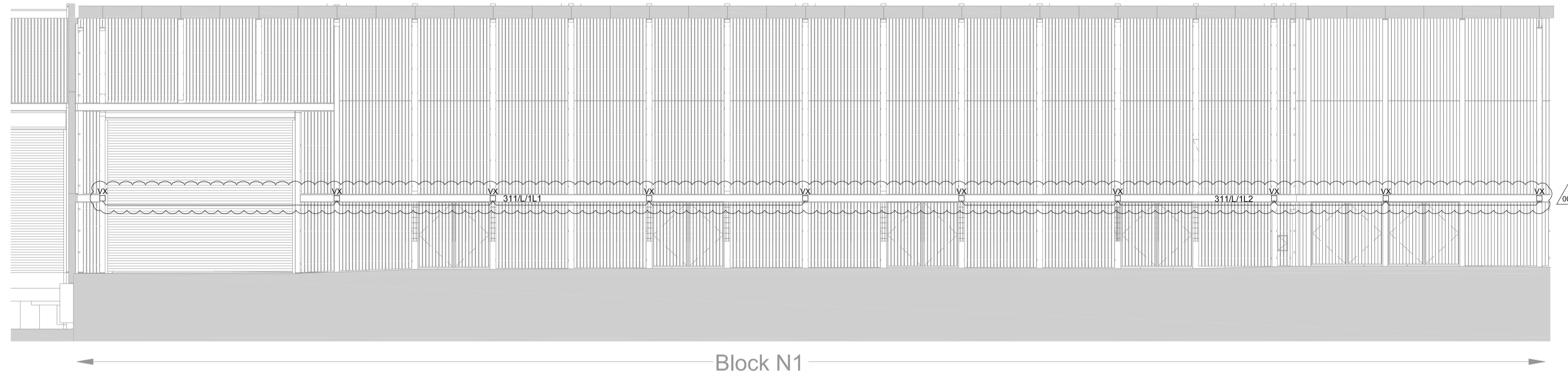


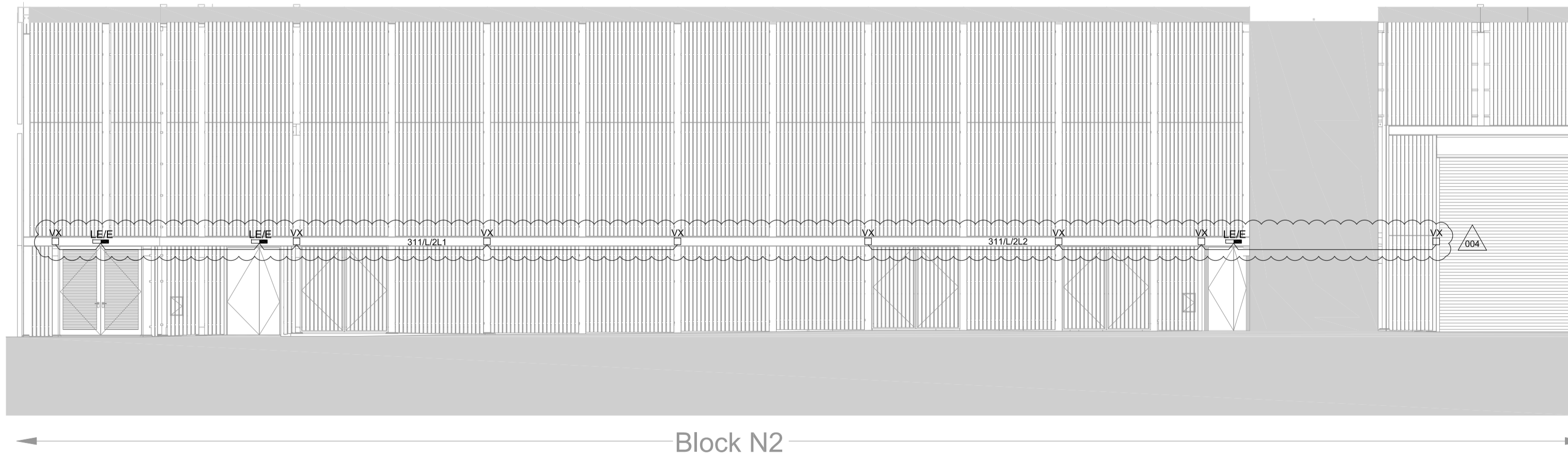
Block S1



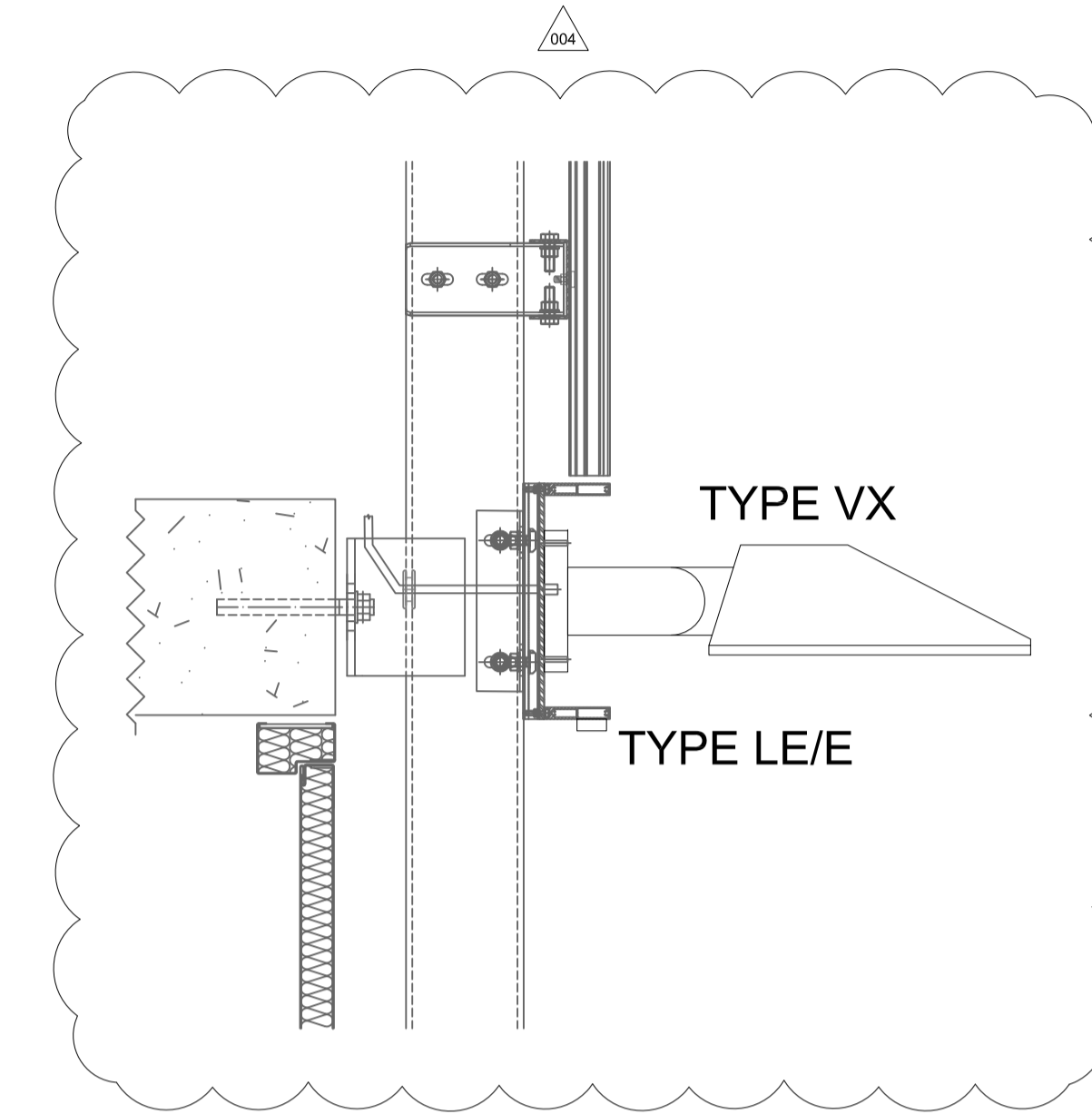
Block S2



Block N1



Block N2



**Status Code (as defined in BS1192)**  
 D3 - Issued for contractor design  
 D4 - Issued for manufacture/procurement

**Work In Progress (WIP)**  
 S0 - Initial Status or WIP

**Shared**  
 S1 - Issued for co-ordination  
 S2 - Issued for information  
 S3 - Issued for internal review  
 S4 - Issued for construction approval

**Documentation (Pre-construction)**  
 D1 - Issued for costing  
 D2 - Issued for tender

**Documentation (Contractual)**  
 A - Issued for construction  
 B - Issued for construction but with comments  
 C - Comprehensive revision required

**Archive**  
 AB - Record Drawing

| rev | by | chkd | date     | description  |
|-----|----|------|----------|--|
| 004 | ND |      | 12.09.19 | LIGHT FITTINGS LOCATIONS ARE MODIFIED, LFE CHANGED TO LE/E |
| 003 | ND |      | 02.11.18 | STAGE 4 ISSUE  |
| 002 | ND |      | 31.08.18 | ISSUED FOR CONTRACTORS PROPOSALS                           |
| 001 | ND |      | 15.06.18 | ISSUED FOR TENDER  |

**bam**  
 BAM Design  
 An operating company of  
 BAM Construct UK Ltd  
 Architecture  
 Interior Design  
 3D Visualisation  
 Feasibility Studies  
 Structural Engineering  
 Environmental Services  
 Building Information Modelling

Centrum Business Park  
 Griffiths Way, St Albans  
 Hertfordshire, AL1 2PD  
 01727 994300  
 design@bam.co.uk  
 www.bam.co.uk

project Kings Cross T Zone

title WEST ELEVATION EXTERNAL LIGHTING LAYOUT

scale 1 : 100 @ A1

date 15.06.18

doc.ref. KXC-T2-001-E-BD4507-63-1ZZXX2

drawn ND

checked 4841

BAM job no. 4841

purpose of issue **STAGE 4**

orig. status **A4**

rev **004**