



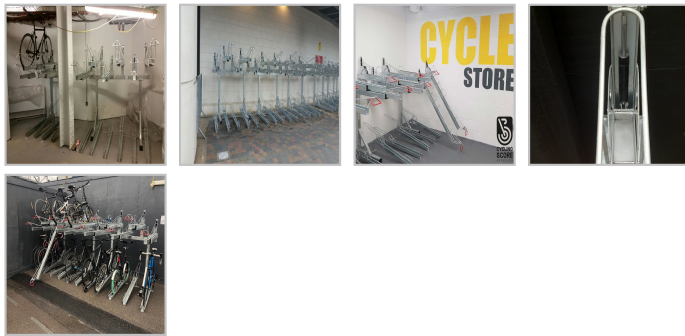
Two Tier Bike Rack - With Gas Strut (BDS)

£1,065.60

Excl. Tax: £740.00

Incl. Tax: £888.00

IN STOCK



Details

The BDS Two Tier Bike Rack is a pioneering and user friendly cycle parking system, with excellent space saving bike storage, superb usability and high value; allowing you to house twice as many bikes in the same area and space as any standard bike rack. The unique aspect of the space efficient and cost effective "Two Tier Bike Rack" makes it exclusive which has resulted in a growing requirement for it; especially in areas of high population densities such as stations, shopping centres, schools, car parks and offices. For all types of bicycles

The Two Tier Bike Rack can accommodate all types of bicycles, such as mountain bikes and road bikes, which can be chained or D-locked on to the Two Tier Bike Rack for added security. The bicycle is well supported by wheel channels and the back wheel is stabilised by a gutter to lock the bicycle firmly into place.

Simple and easy

The lower cycle rack has a sloping wheel channel, so the user does not have to bend between the levels which makes the two tier cycle rack system simple and easy to use for all ages. This rack is excellent for space saving as the cycle stands are so compact with a centre to centre distance of only 375mm.

Capacity Calculator* Estimate how many bikes you can store:

Length mm units:

Number of cycles stored: `*Minimum height of 2.4 metres required // 900000) {Rd=900000}; if (Rd==900000) { alert('Are you sure you entered the length in mm\nYou have way too much space\n Call us for assistance. '); return false; } var Sc = (Rd * 2) // debug alert (Sc); form.Answer.value = (Sc - 2); } /* ClearForm: */ function ClearForm(form) { form.input_A.value = ""; form.Answer.value = ""; } // // // // // // // // // //]>` Benefits of the Two Tier Bike Rack include: Available in a galvanised or powder coated finish (please call us for a quote). Easy to use upper tier using stainless steel bearings for long life and minimum maintenance The bicycle is held stable in the wheel channels with locking bars for additional security Accommodates all cycle types (mountain bikes, town bikes etc) Bicycle frame and wheel can be chained for security Cycle is well supported when being stored Lower rack has a sloping wheel channel, so the user does not have to bend between the levels Can be extended indefinitely Double or single sided versions available Robust construction, hot dip galvanised to BS EN ISO 1461 Optional powder coating in any of the 192 RAL colours (Non moving parts) BDS Two Tier Bike Racks are the only "Cycling Score" approved two tier bike

parking system Designed and manufactured by a company with over 50 years experience We even wrote a blog about the Two Tier Bike Rack here. This bike rack can help contribute towards gaining ENE8 Cycle storage credits when used in the appropriate situation, under the Code for Sustainable Homes. Cycle stands are compact with a centre to centre distance of 375mm Minimum height required is 2400mm x minimum depth 1950mm (plus a recommended minimum entrance space of 1500mm) Easy lift gas strut fitted so lifting the bike up on the rack requires minimal force from the user, as per health and safety standards How many bikes can I fit in with the Two Tier Bike Rack?

It's easy to work out. All you need to do, is measure the length of the area you want to fit the rack in. The length (mm) divided by 375mm = number of bikes that will fit on the bottom row. Multiply by 2 to get the total number of bike spaces and subtract 2 bikes to allow for the handle bars sticking out.

For example. 4000mm length divided by 375 = 10.666. Multiplied by 2 = 21.333. Round it down to 20 bikes.

How much space in the room do I need?

To be comfortable, we advise at least a 3500mm depth and a width of:

4 bikes - 1125mm 6 bikes - 1500mm 8 bikes - 1875mm 10 bikes - 2250mm 12 bikes - 2625mm 14 bikes - 3000mm 16 bikes - 3375mm 18 bikes - 3750mm 20 bikes - 4125mm Simply add 375mm for each extra 2 bikes. Lead Time on the BDS Two Tier Bike Rack

Unlike many other Two Tier bike rack manufacturers, we carry stock of the main components so lead times can be much shorter than other suppliers. We have often delivered against very strict deadlines, The London Shard being an example; where we attended site, created a CAD layout plan for approval, designed a bespoke solution, manufactured and delivered in 4 weeks to the set and agreed deadlines.

Typical delivery time: 2-8 weeks

Â

PLEASE CALL US ON 0800 612 6113 TO DISCUSS MORE DETAILS OR TECHNICAL INFORMATION.

Â See our Two Tier Cycle Shelters here

Product reference: TTBR1