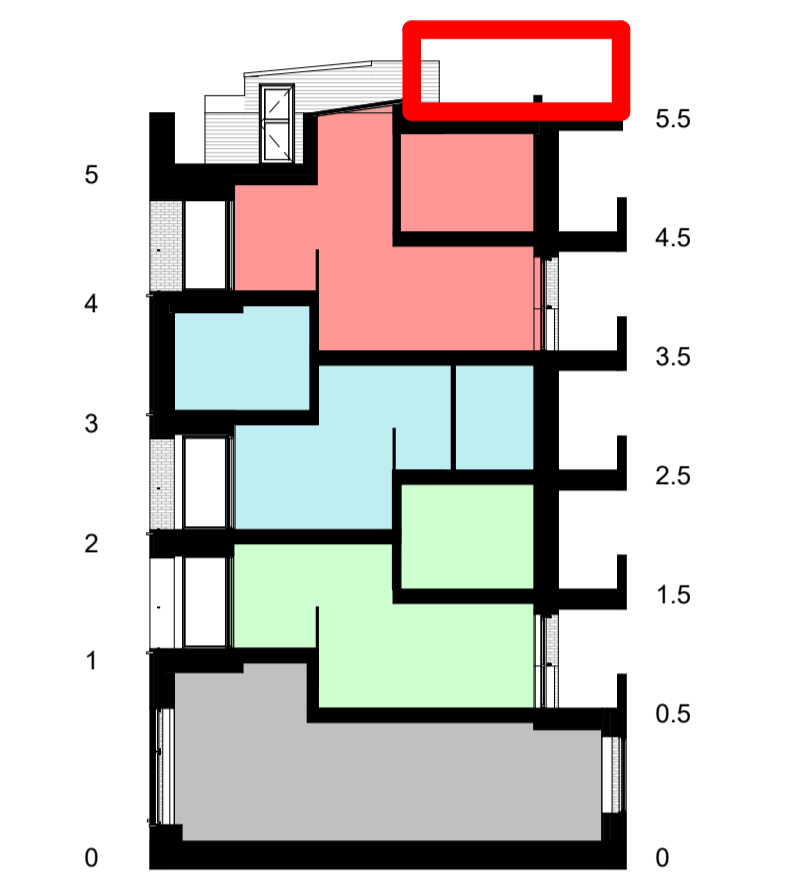


1 Fith floor roof plan
1 : 100

Notes
 This drawing is © Archtype Ltd.
 Check this drawing is the latest revision.
 Do not scale from this drawing.
 Do not use the information on this drawing without checking all dimensions on site.
 Do not use any areas indicated for either valuation, purchase, sale or any other form of legally binding contract.
 Do not reproduce any part of this drawing without prior written consent.
 Report any discrepancies on this document to Archtype.
 Read this drawing in conjunction with the associated models, specifications and related consultant's documents.
 Equivalent products / materials may be Approved where the Employer's Requirements, Thermal Performance, Airtightness and any other specified performance requirements are met. Subject to Archtype "Acceptance".
 All materials to be certified to comply with BS 14001 or BES6001 or be able to provide a Chain of Custody certificate in order to comply Code for Sustainable Homes. All timber species and sources used in this development are not to be listed on the CITES appendices for endangered or threatened species (appendix I, II or III)

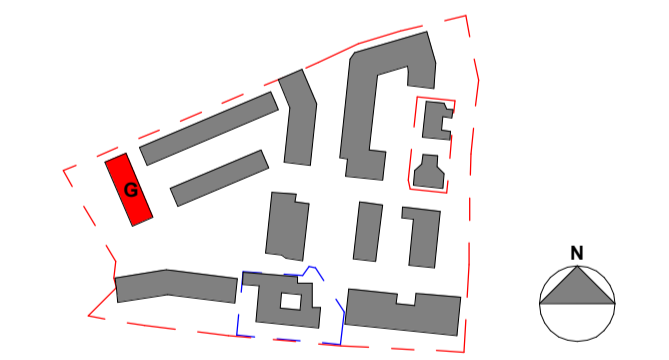
Designer's Hazard Identification
 It is assumed that all works will be undertaken by a competent contractor working, where appropriate, to an approved method statement. In addition to the hazards typically associated with the types of construction detailed on this drawing, any known abnormal hazards specific to this drawing have been identified.



Key Plan in Section
 1 : 200
KEY
 - Lower / higher floor in relation to shown plan

Notes
 Agar Grove Energy statement by NRG consultants, section 4.2 Passivhaus Approach : Following this 'fabric first' model, the development achieves a reduction in regulated carbon emissions of 21.88% over the Part L 2013 baseline. Further CO2 savings are achieved at the 'Be Green' stage via a PV array of 11.2 kWp, comprising 35no. modules. Please refer to the Energy Statement for more context'

Rev	Date	Description	Drawn	Checked
5	19.08.19	General update	LM	AMF
4	01.06.18	PV Panel arrangement update	CR	AMF
3	24.01.17	Amendments as per meeting	LM	AMF
2	12.01.16	Planning amendments	CR	AMF
1	14.11.17	Proposed planning amendments	CR	AMF



ARCHITYPE
 LONDON: 020 7403 2889 WWW.ARCHITYPE.CO.UK HEREFORD: 01981 542 111

Client: Hill Partnership Ltd for Camden Council
 Project: Agar Grove Block G
 Drawing Title: Roof floor plan
 Project: T14011 - ART - DR - A - 1b G 00 - PL-111
 Status: S2 Issued For Information
 Revision: PL 5 Issued for Planning
 Scale: As indicated @ A1 Date: 11/13/17
 Drawn by: CR Checked by: AMF
 Internal Project Ref: 8575 Model Ref: AG-RAC2015-A-G