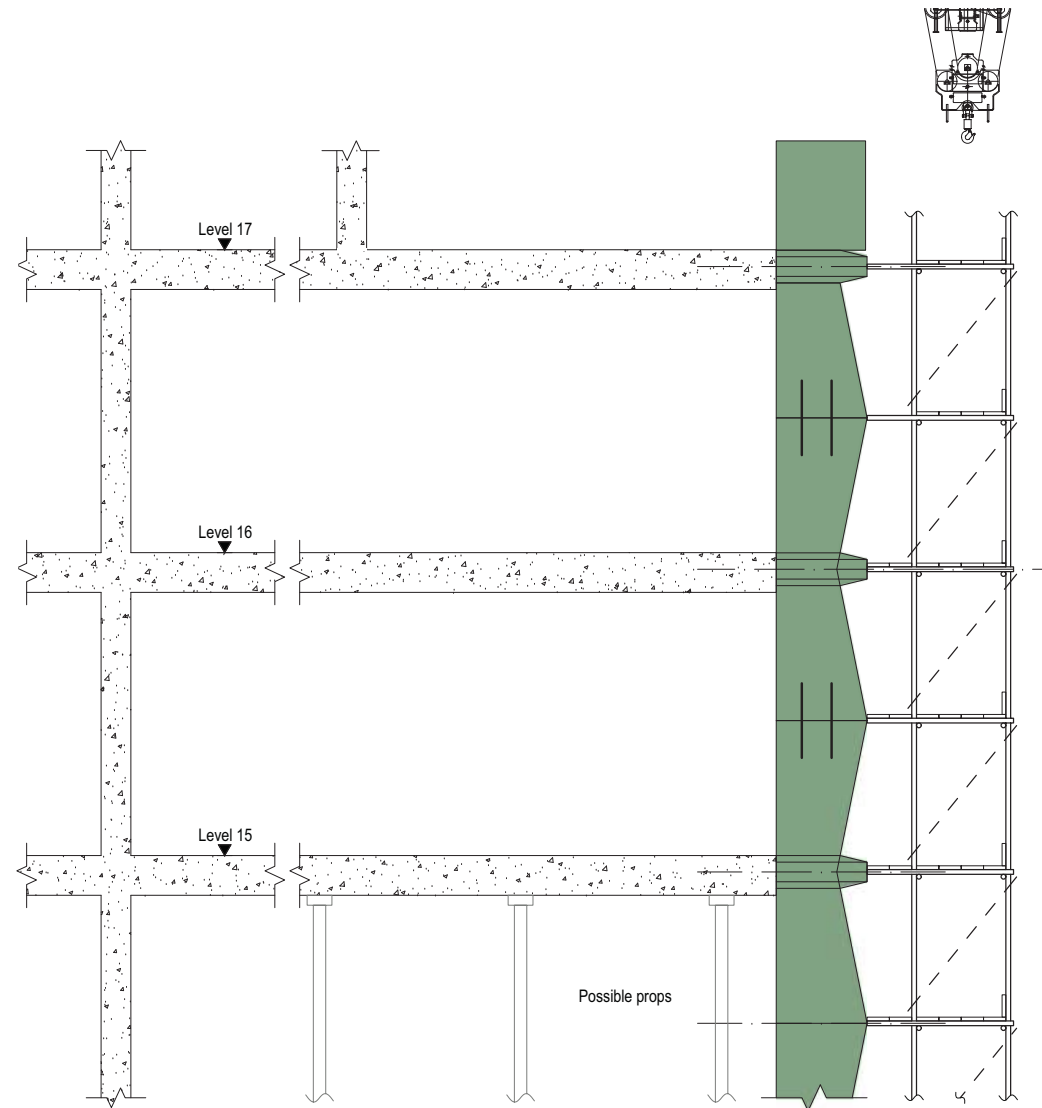


2.5 Indicative Construction Sequence

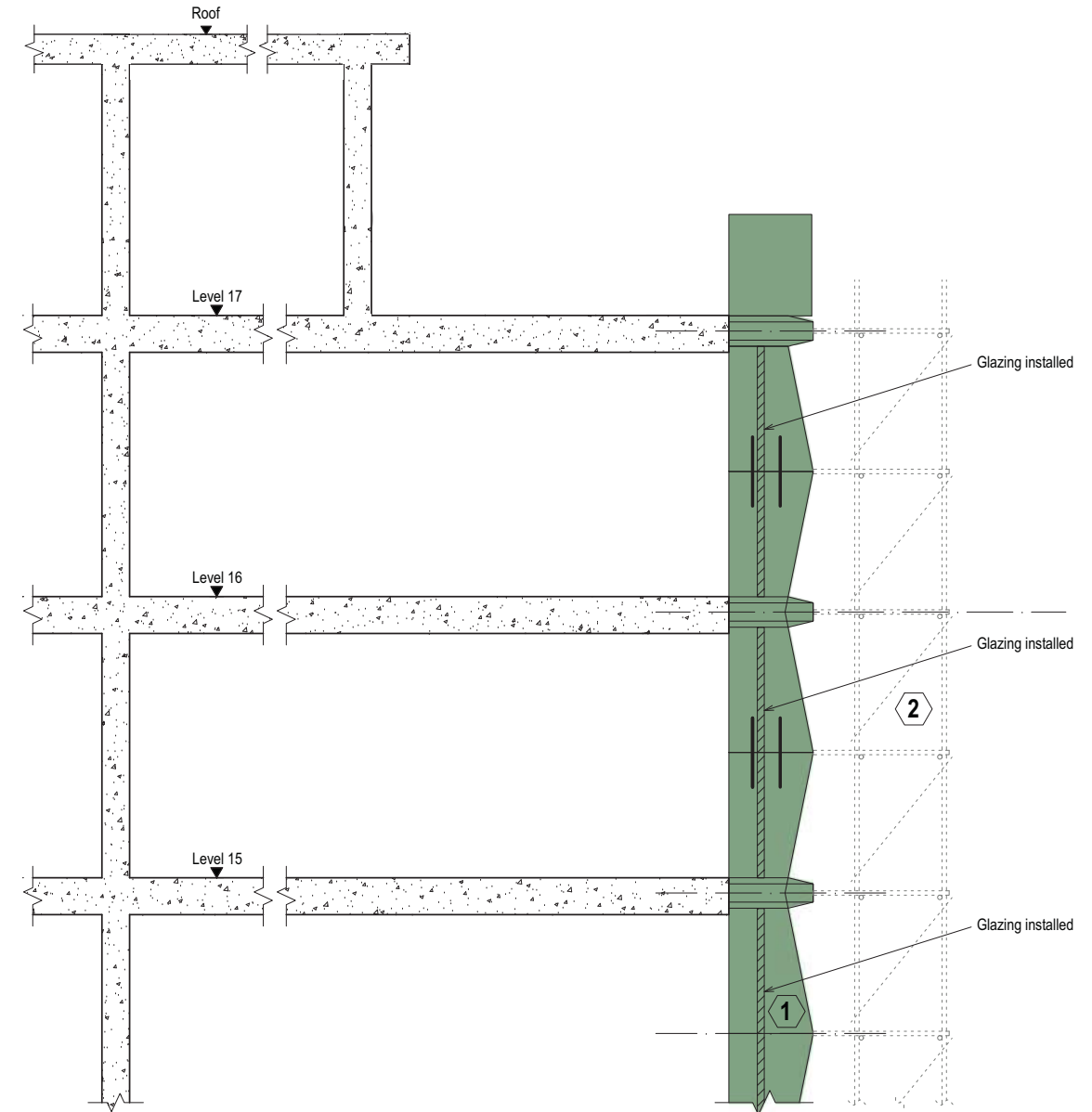


STAGE 5

Construction Sequence:

Sequential cast.

- Verticals at levels 15 - 16
- Slab at level 16
- Verticals at levels 16 - 17
- Slab at level 17.
- Verticals at levels 17 - Roof
- Slab at roof level



STAGE 6

Construction Sequence:

- Install glazing.
- Strike scaffold.
- Install Plant

Sketch Number: 101478-PF-ZZ-XX-SK-S-0032

Date: 11/09/2019

Revision: 4

Space House - Tower Extension

3.0 Kingsway Extension

Since submission the applicant has worked to develop the design detail of the new extension to the Kingsway building.

The key changes to the Kingsway extension are;

3.1 Lowering the height of the extension by 400mm to reduce the proposals impact in long views and adjust the proportions between new and old. The plant enclosure and lift overruns will be contained within this revised envelope.

3.2 Reducing the footprint of the extension to the Southern end by 7.5m to reduce its impact in the views from Kemble and Wild Street where the proposal is more visible. This reduces GIA by 72sqm.

3.3 Further detailed analysis of the glazing setting out drawing reference from below, including adding a curved window which returns to the southern elevation.

3.4 Balustrade material changed from glass to steel metal rods with a top flat bar in a PPC finish to match the window frames.

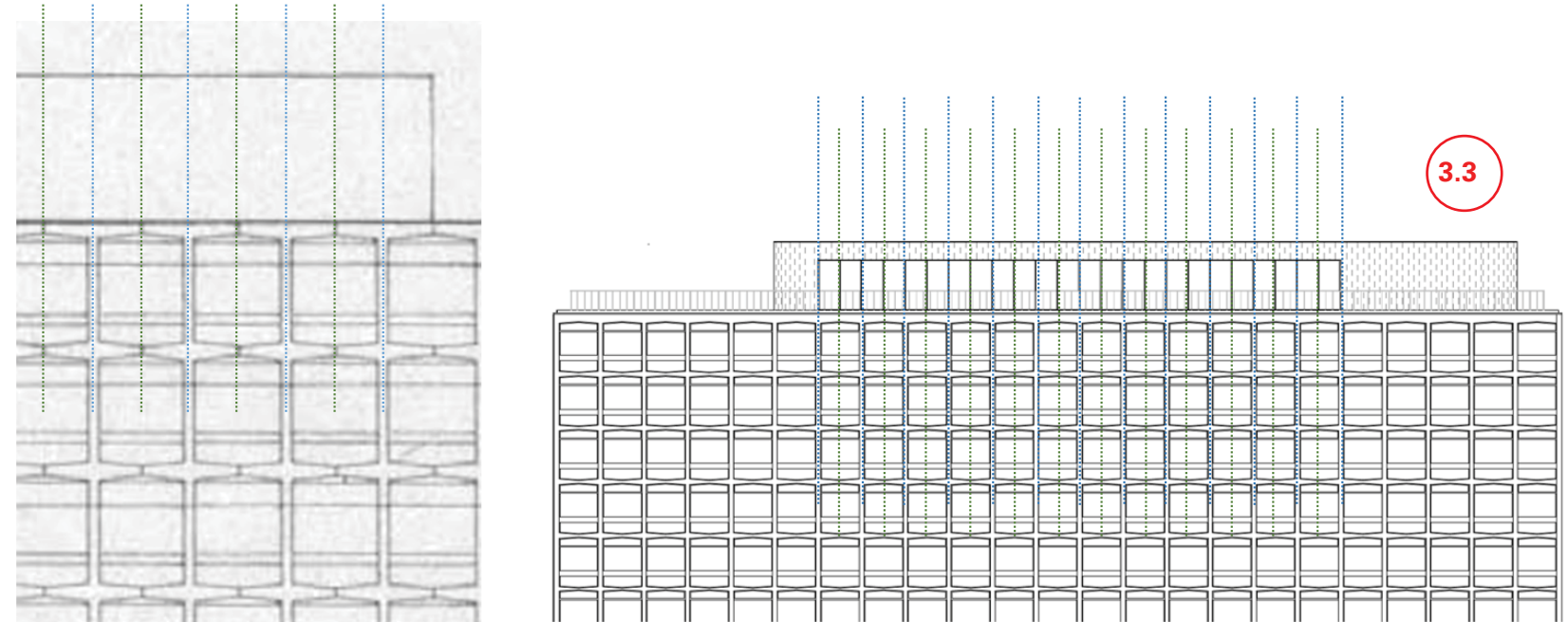
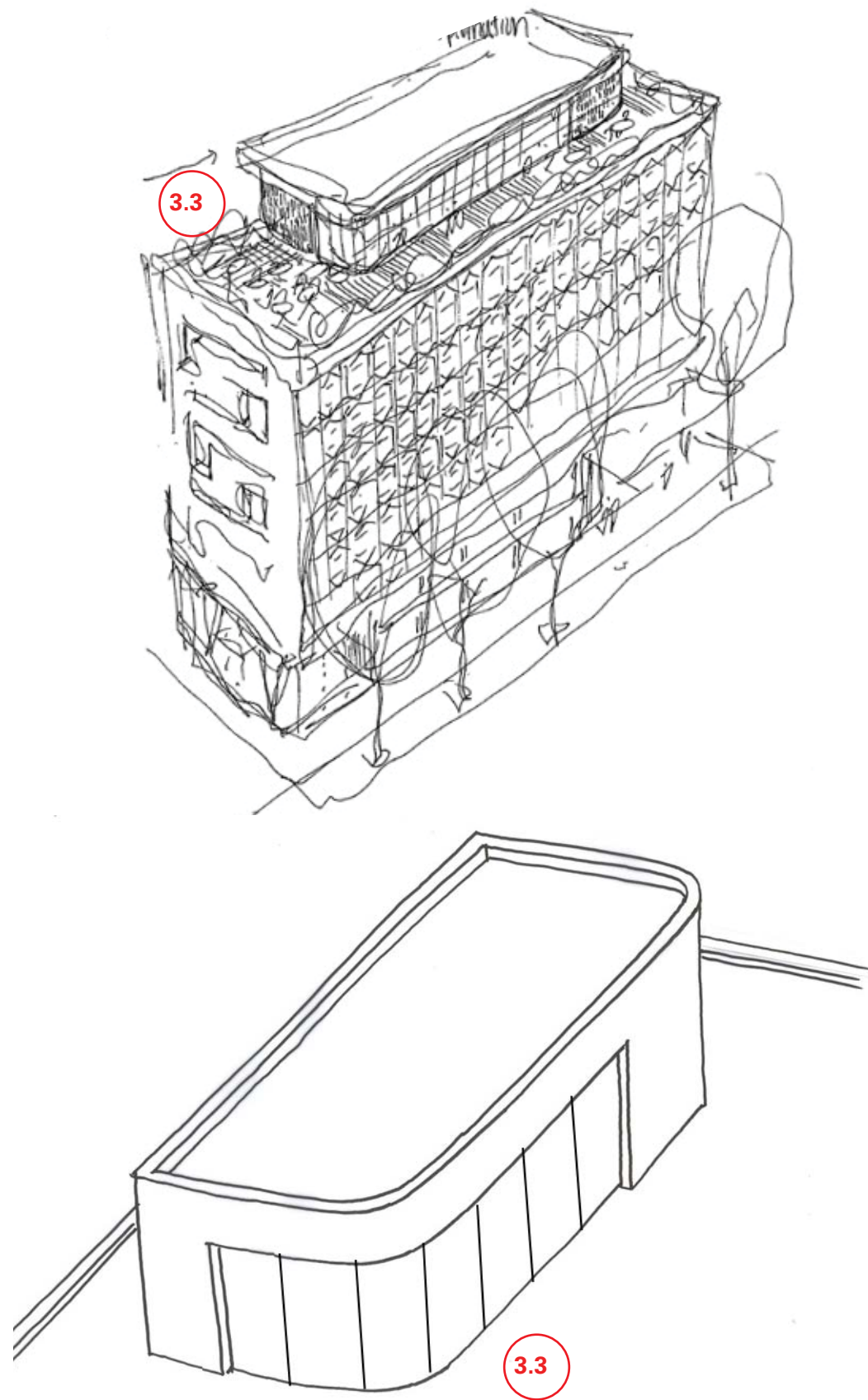


Diagram illustrating glazing setting out revised to draw reference from listed building below



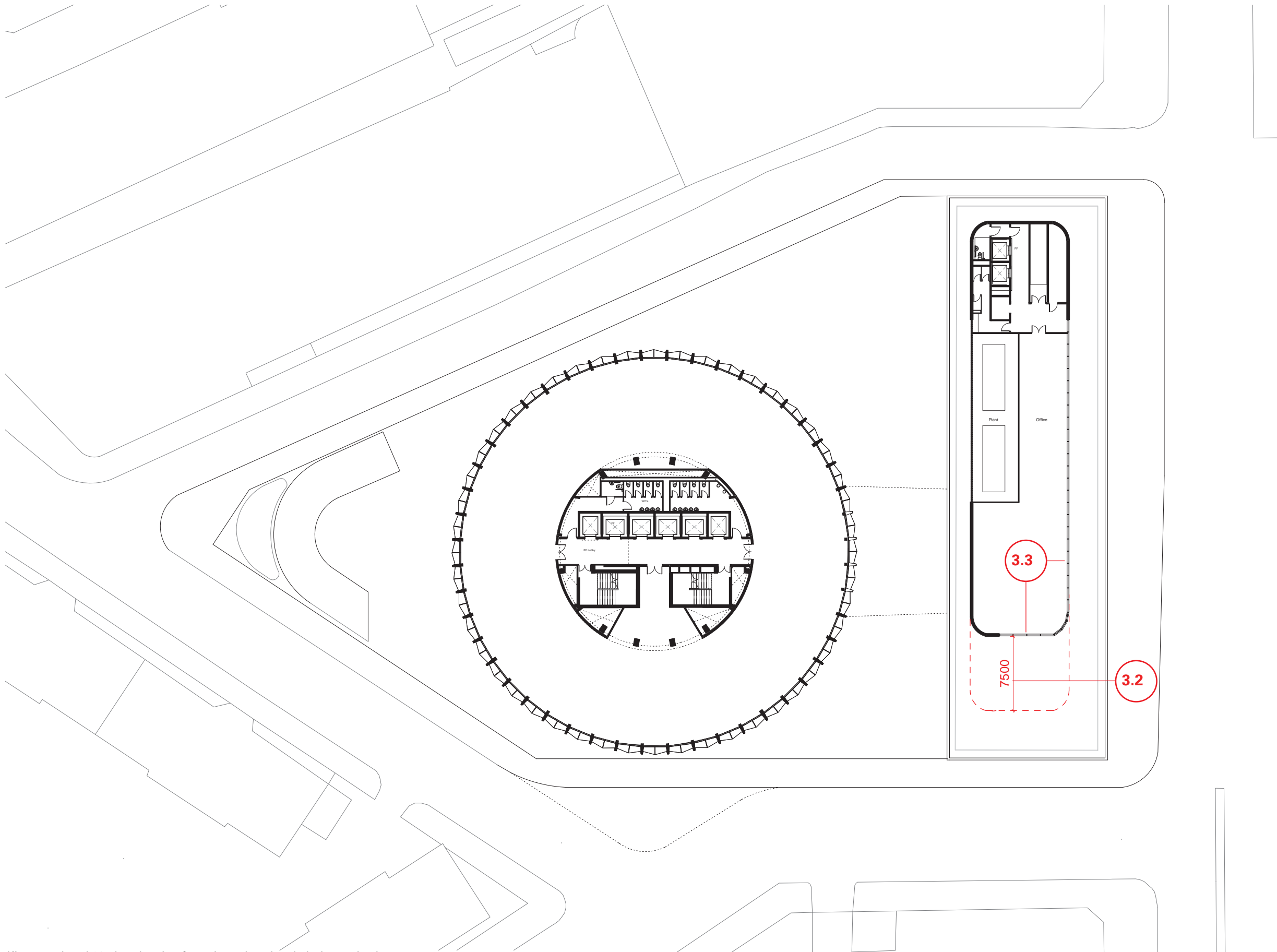
Existing Kingsway Plant Enclosure and Mosaic detail



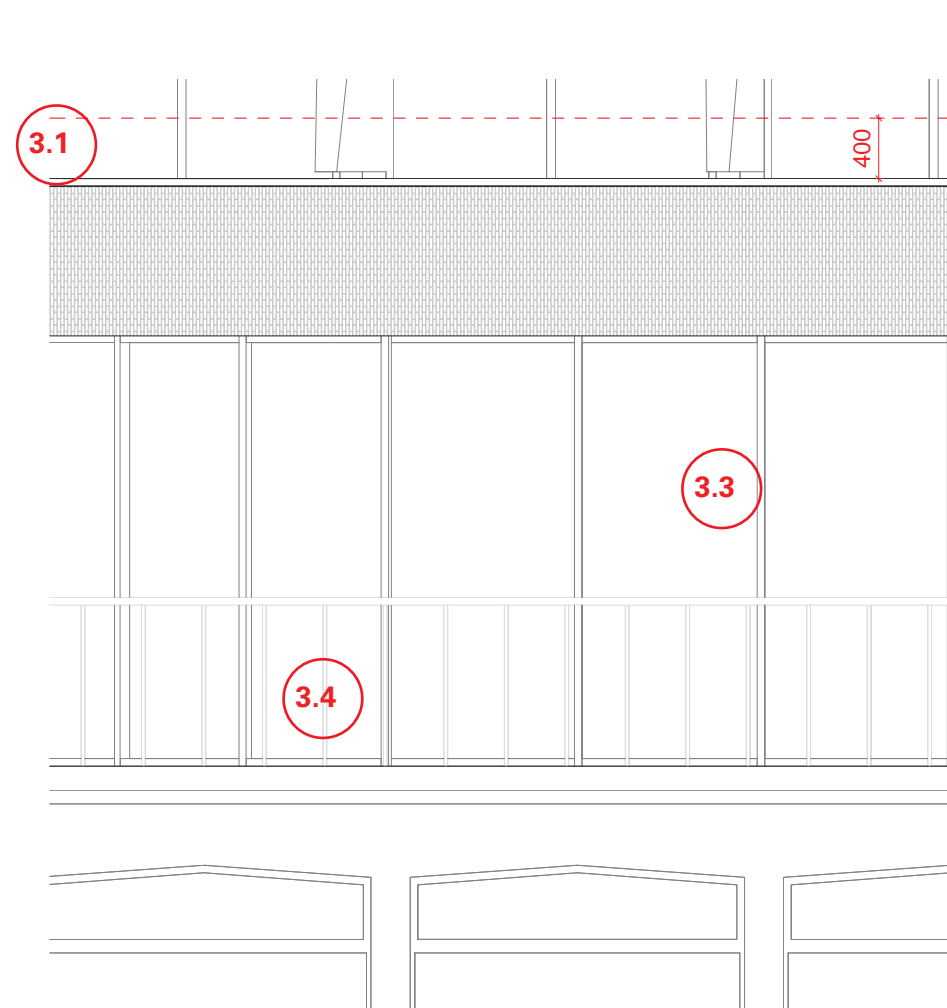
Revised Proposed sketch views of Kingsway extension illustrating glazing intent.



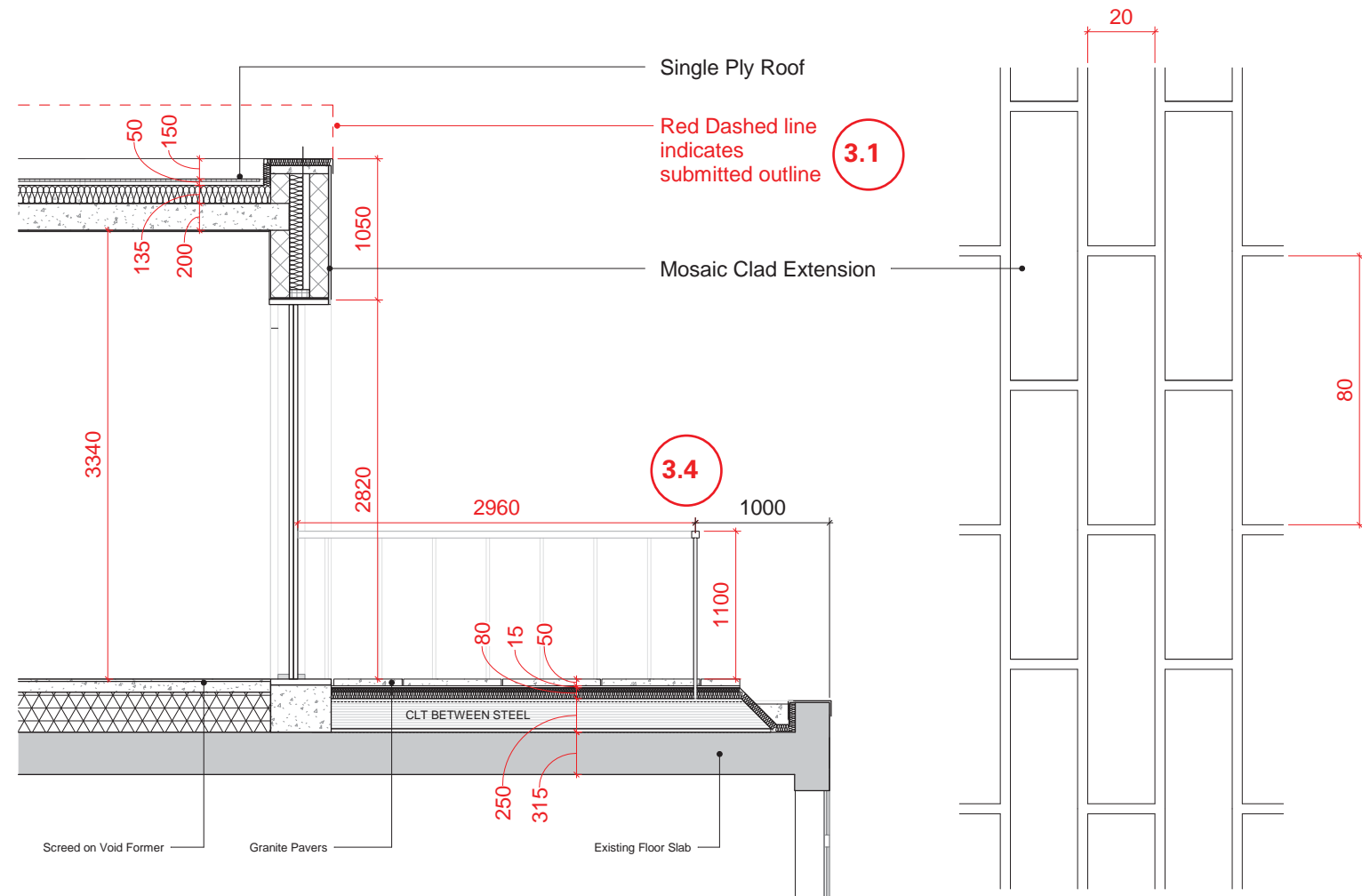
View from Kimberly Street showing Kingsway Extension, footprint reduced and glazing intent



Kingsway Level 08 plan showing footprint reduced and glazing revised



2 Kingsway Detail Elevation
1 : 25



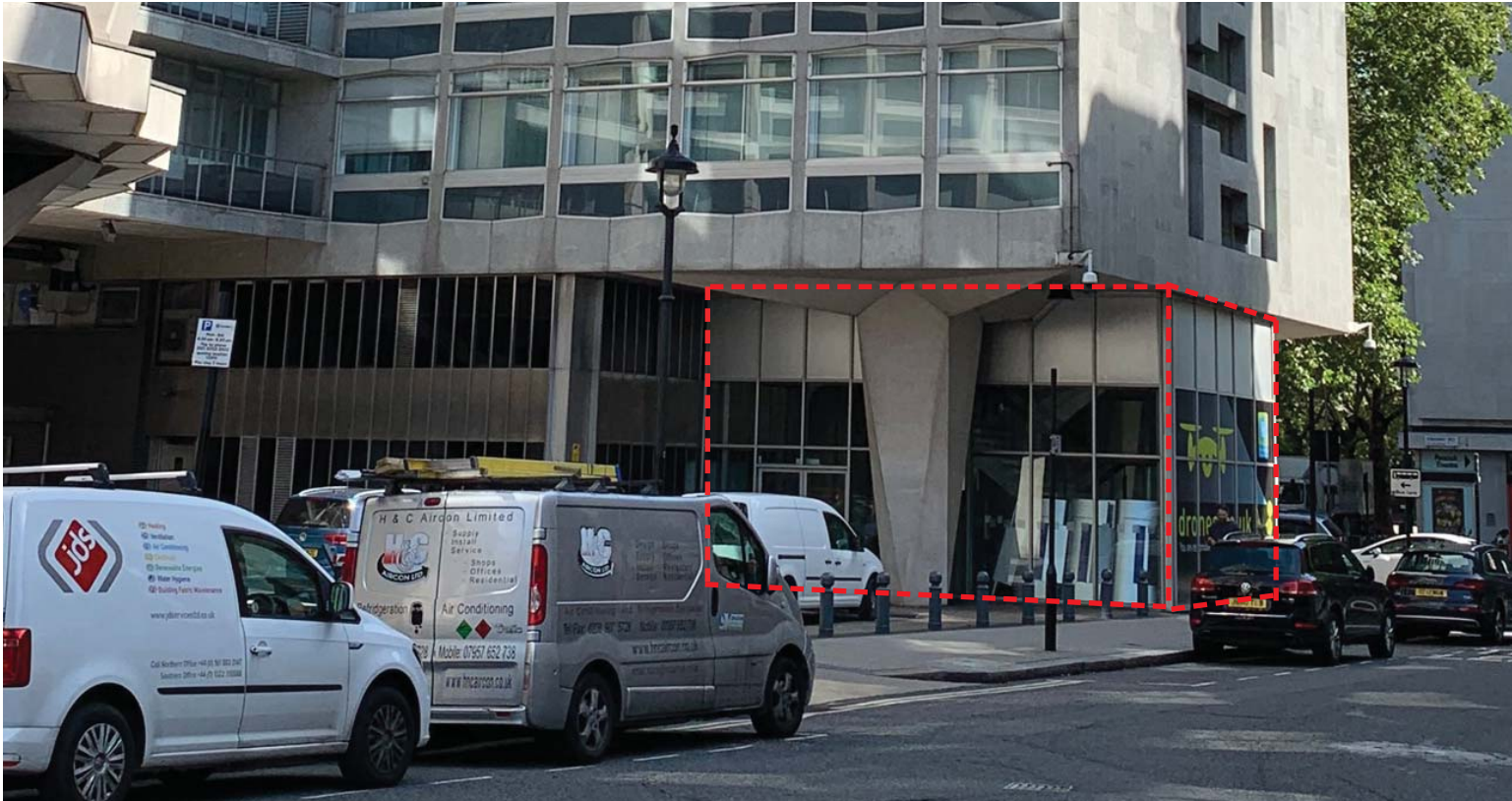
3 Kingsway Detail Section
1 : 25

4 Mosaic Tile
1 : 1

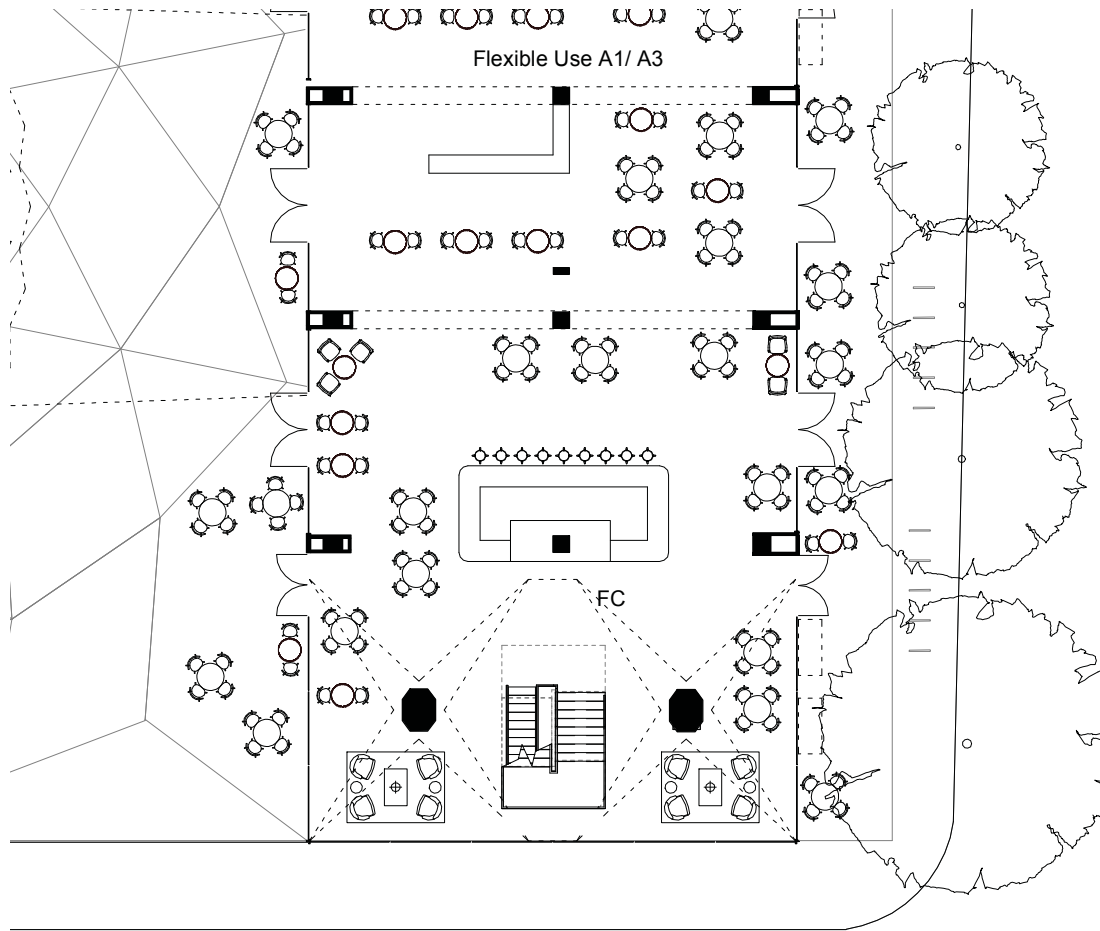
Revised Extension Design

4.0 Kingsway Southern Stair

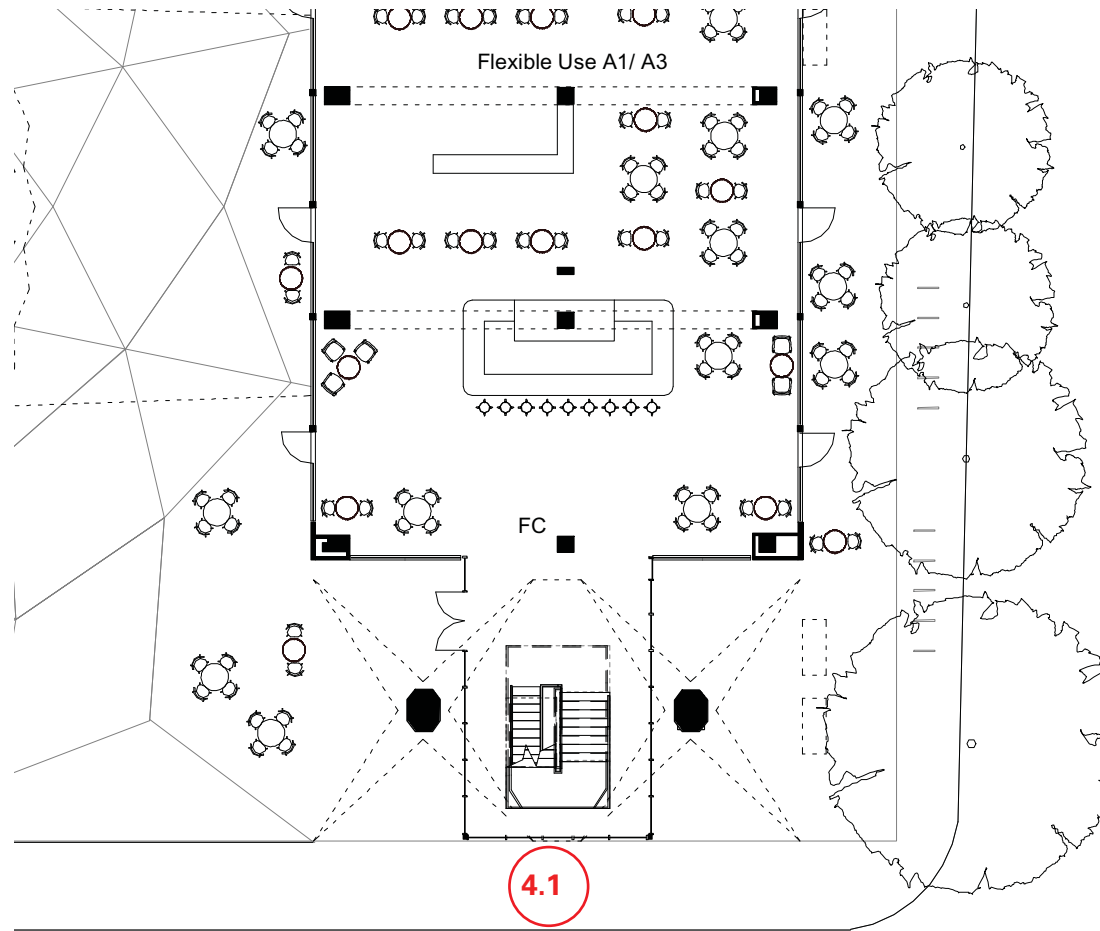
4.1 It has been agreed with London Borough Camden design officers to retain the existing Southern Stair Enclosure in lieu of previously submitted proposals. In order to improve the visual appearance of the current enclosure the glass within the existing framework will be re-glazed with modern clear glass.



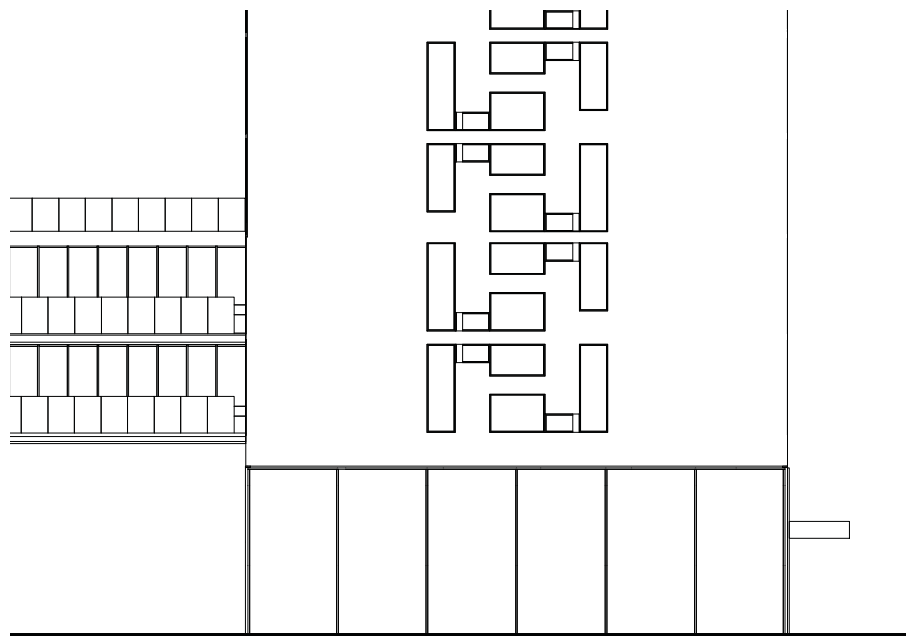
Existing Photographs of enclosure (dashed red)



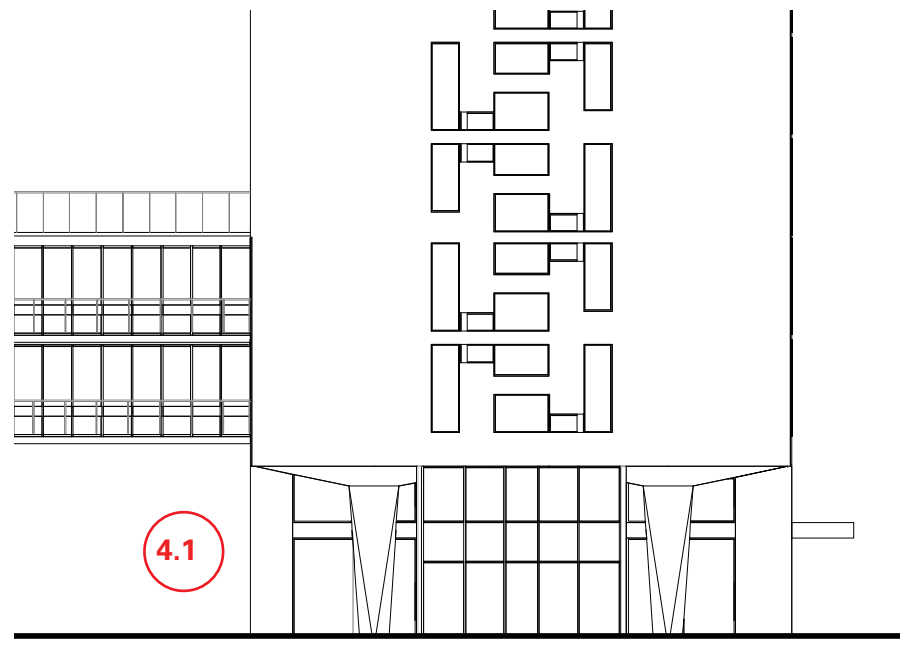
Previously Proposed Southern Stair Enclosure (submitted)



Revised Proposed Southern Stair Enclosure



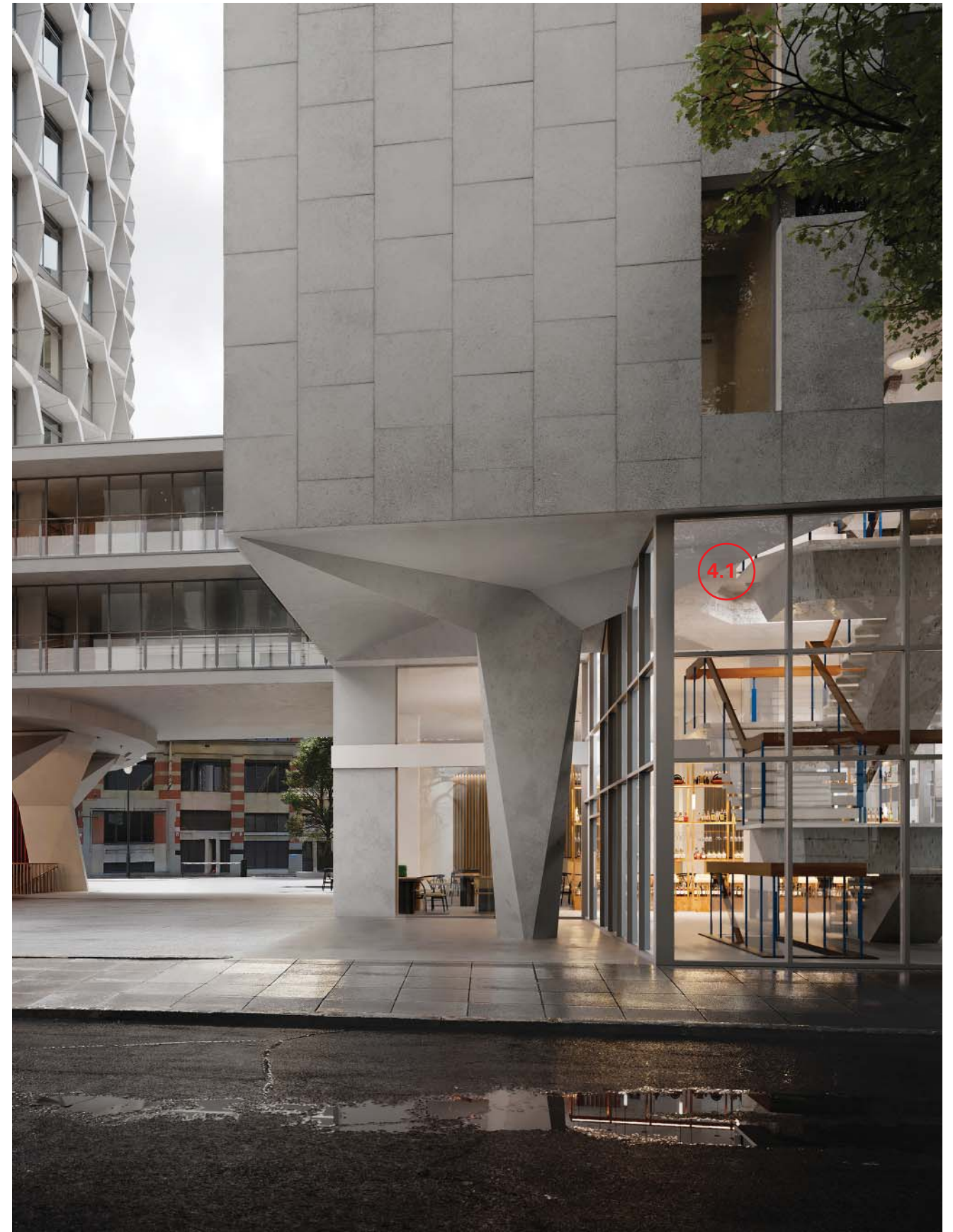
Previously Proposed Southern Stair Enclosure (submitted)



Revised Proposed Southern Stair Enclosure



Previously Proposed Southern Stair Enclosure (submitted)



Revised Proposed Southern Stair Enclosure

5.0 Shopfront to Kingsway

Since submission the applicant has worked to develop the design detail of the Shopfront fronting Kingsway.

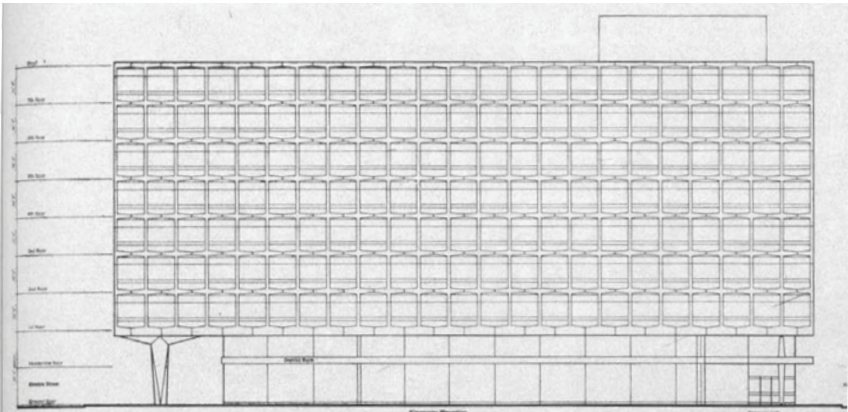
The key changes to the Kingsway Shopfront are;

5.1 Re-incorporation of the horizontal band to the ground floor storey to break up the composition of the shopfront.

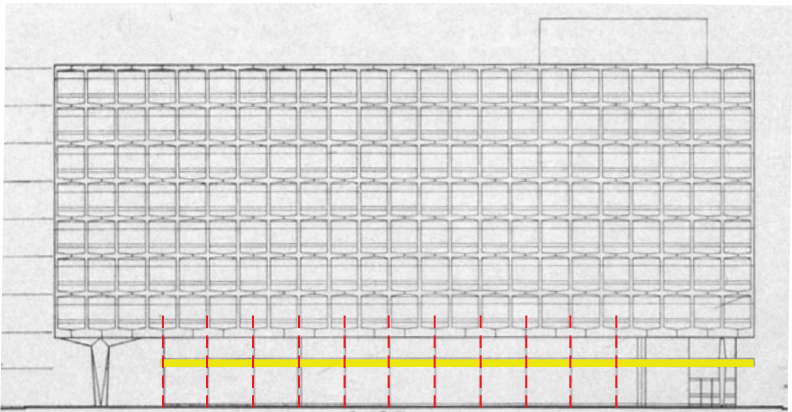
5.2 Revised setting out of shopfront glazing. Setting out drawn from the setting out of facade above and in line with the Seifert and Partners concept elevation.



Artist impression of the shopfront to Kingsway

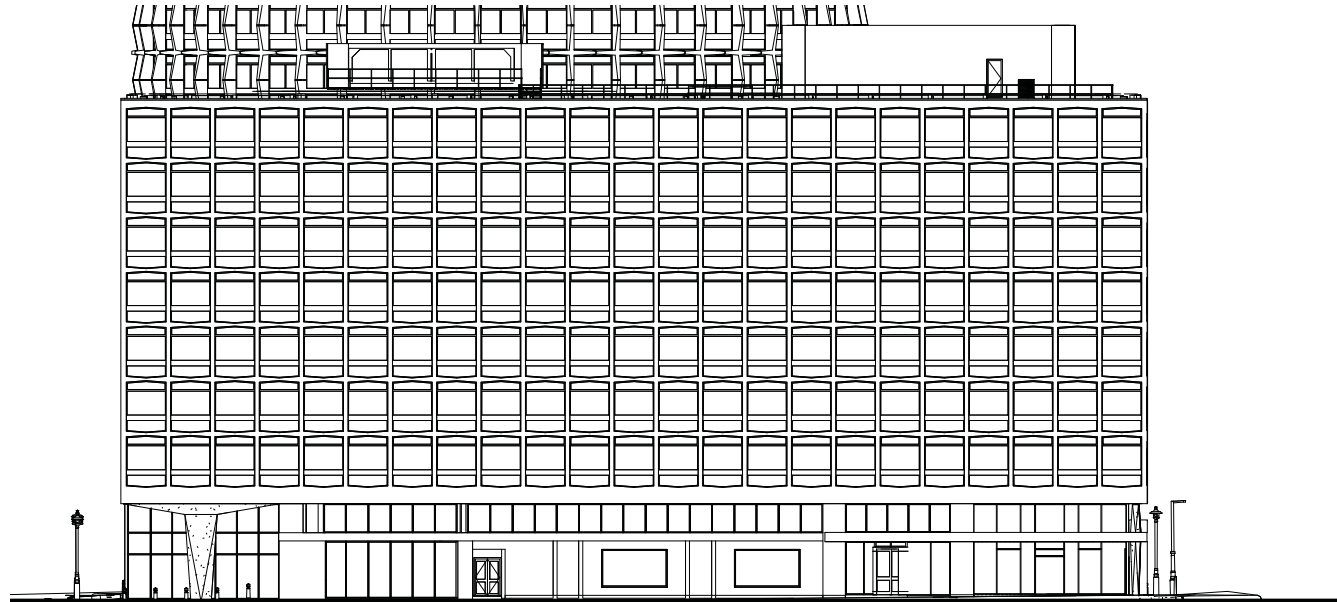


Kingsway Concept Elevation (Unbuilt)



Glazing Setting Out Concept Intent

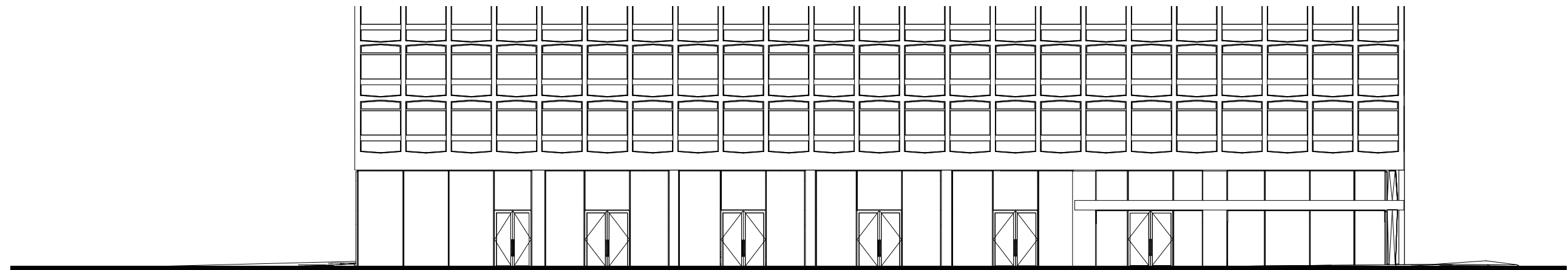
--- Glazing Setting Out
— Strong Horizontal



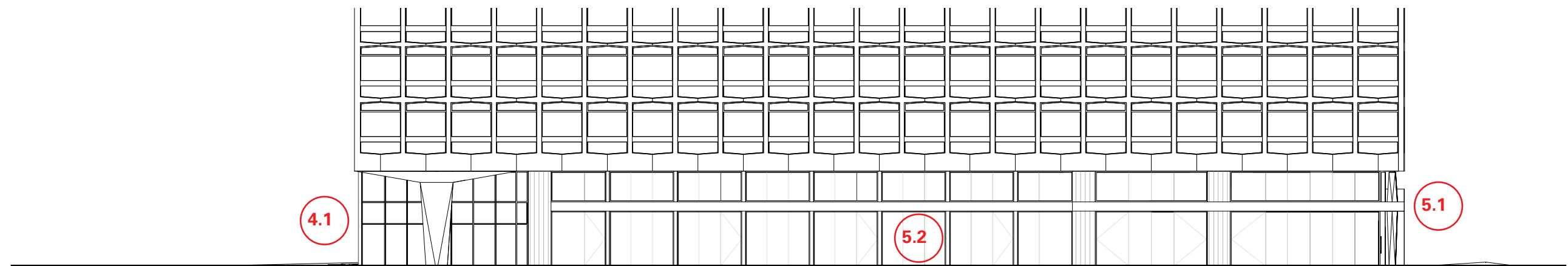
Kingsway Existing Elevation



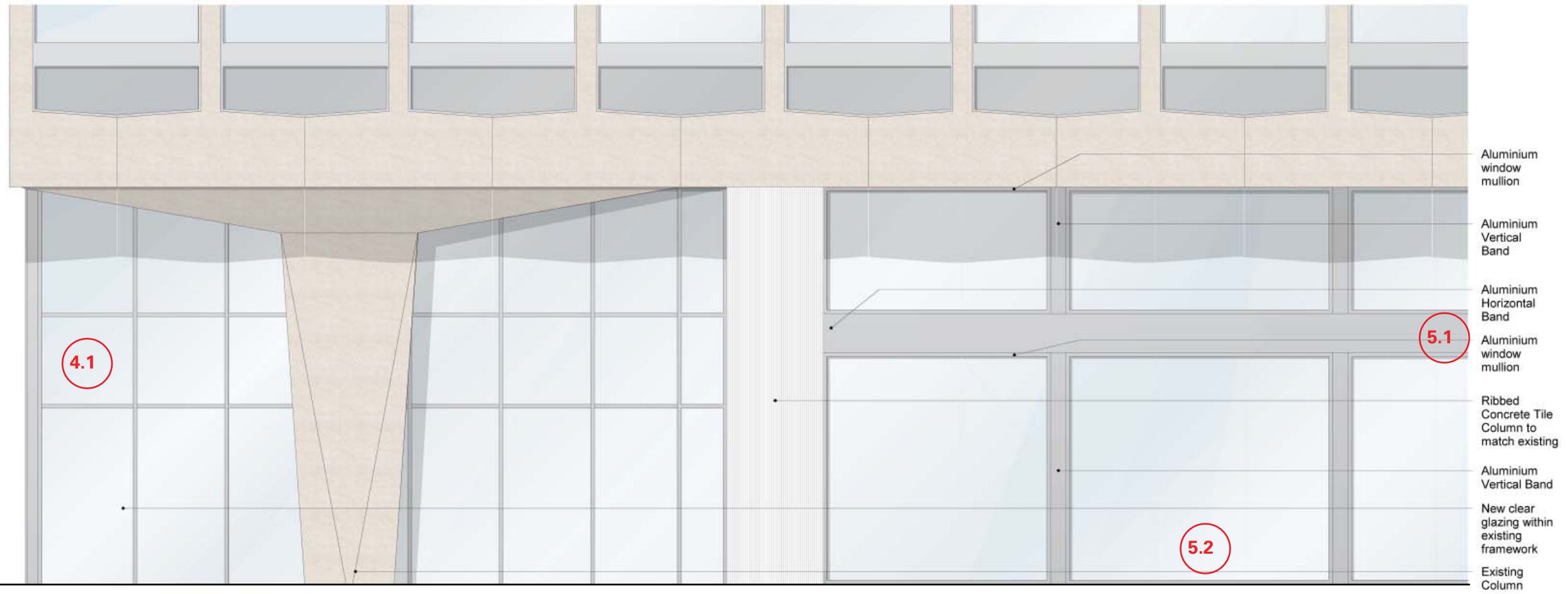
Kingsway Shopfront Existing Photos



Previously Proposed (submitted) Kingsway Shopfront Elevation



Revised Kingsway Shopfront Elevation



Revised Kingsway Detail of Southern end of Shopfront



Existing view from Kingsway



Previously Proposed (Submitted) Illustrative view from Kingsway



Revised Proposed Illustrative view from Kingsway