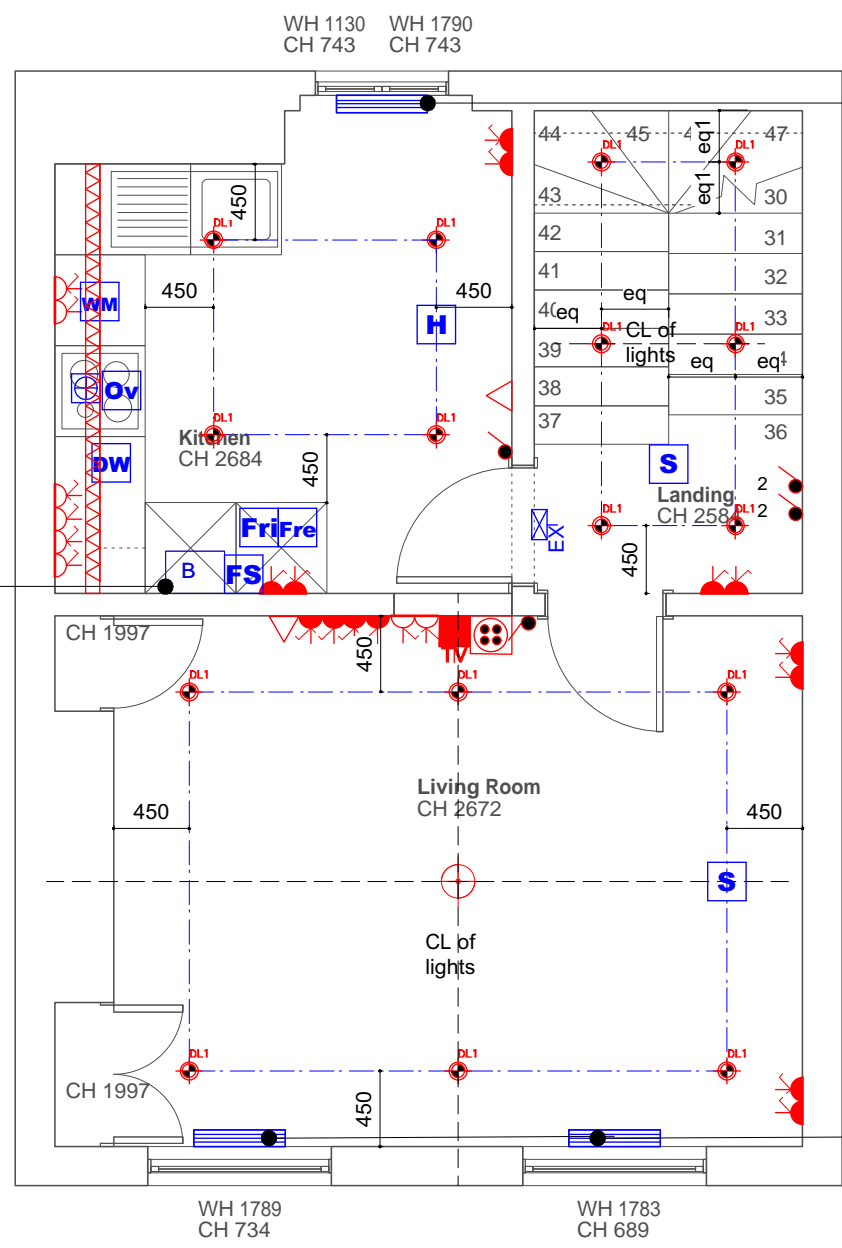


1 PR SECOND FLOOR ELECTRICAL & MECHANICAL PLAN
1:50

N.B
All TV Points to include the following provision: 2 x co ax cables (aerial), 3 x CAT 6 cables (data), 1 x CAT 6A cable (TV), 1 x fibre cable (multi mode to TV). Minimum 1 x double mains socket. AV cabling to be separated from mains cables by minimum 30cm.



Traditional Victorian 4 Column 460mm Cast Iron Radiator in Gun Metal Grey. Size TBC on site.

Traditional Victorian 4 Column 460mm Cast Iron Radiator in Gun Metal Grey. Size TBC on site.

Contractor to specify combi gas boiler to Architects Approval.

All existing exposed cabling to be re-run under flooring.
All existing lighting to be removed prior to proposed lighting and electrical point installation.

KEY		KEY	
CIRCUITS		LIGHTING	
	double switched socket		DL1 Recessed downlighter 12v with transformer
	double switched socket above worktop		DL2 Recessed directional 12v downlighter
	single switch socket outlet		DL3 Recessed Internal Uplighter
	Shaver socket - dual voltage		DL1 Single Trimless Downlighter
	One way light switch		DL2 Double Trimless Downlighter
	2 way light switch		DL3 Bathroom Downlighter IP 65 rated
	Dimmer switch		Recessed LED light
	Lighting control pad		Recessed mounted wall light
	Pull cord switch		Concealed strip light
	PIR detector		UC LED Tape Under Counter
	13 amp fused switched spur with neon indicator		LED Light Strip
	30 amp fused switched spur with neon indicator		W1 Wall Light 1500
	USB wall socket		P1 Pendant
	TV/FM/SAT point CAT 6A		P2 Pendant
	Telephone point		Wall Mounted Picture Light 1500
	Data connector CAT 6		Wall mounted bulk head light TBC
	Doorbell		Emergency exit light
NOTES			LED emergency ceiling light + battery back-up
All electrical work required to meet the provisions of Part P (Electrical Safety) to be designed and installed in accordance with that document. Inspection and testing to be undertaken by a competent person and an appropriate BS7671 electrical installation certificate issued prior to completion of the work. For the purpose of this regulation a competent person is registered with an electrical self-certification scheme authorised by the secretary of state.			Energy saving pendant
Compliance is necessary within the Electricity at Work Regulations 1989 as amended. Electrical installations should be designed and installed and suitably separate with appropriate distances to provide mechanical and thermal protection, employing measures that afford appropriate protection for persons against the risk of electric shock, burn or fire injuries.			Link to door sensor
Provide energy efficient lighting equaling the greater of one per 25 sq.m of dwelling floor area or part thereof or one per 4 new fixed lighting fittings. Or provide light fittings (including lamp, control gear and appropriate housing, reflector, shade or diffuser or other device for controlling the output light) that only take lamps having a luminous efficacy greater than 40 lumens per circuit-watt. External lights should automatically switch off when in use.			Ceiling mounted movement sensor
Fused spurs to be grouped and accessed through a built in cupboard.		NOTES	
Circuits and switches to be labelled C1, C2, C3 etc to show corresponding circuit.			



DISCLAIMER:
Dimensions to be verified on site. Only figured dimensions to be used and any discrepancies in dimensions are to be reported to ARDE. No dimensions are to be scaled from printed drawings. Any areas indicated on this drawing are for guidance only. No responsibility is taken for their accuracy.
There is a risk of injury or death in construction if works are not properly planned and supervised. The contractor must not undertake any elements of the work without first having carried out the necessary risk assessments and prepare detailed method statements.



NOTES:

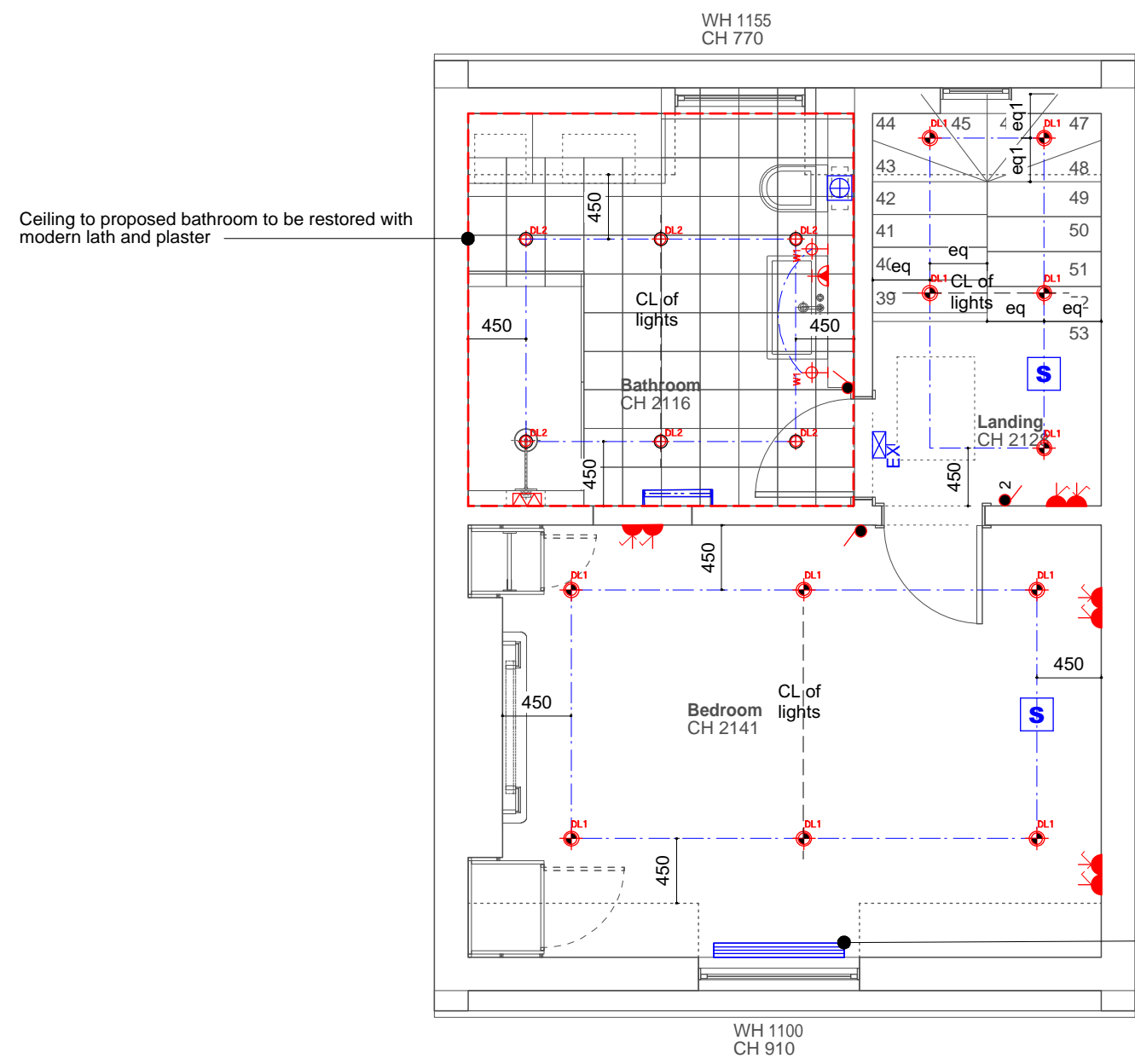
REV.	DESCRIPTION:	BY:	DATE:

STAGE: **TENDER**

ARDE	ARDE. ARCHITECTURE & DEVELOPMENT 13 HARCOURT ROAD BROCKLEY SE4 2AJ		
Client	SHAFTESBURY COVENT GARDEN LTD		
Address	42 MONMOUTH STREET		
TITLE	ELECTRICAL PLANS		
DRAWING	121		
REV.	-	SCALE	AS STATED
STATUS	TENDER	DRAWN	VT
DATE	JULY 2019	CHECKED	-

1 PR THIRD FLOOR ELECTRICAL & MECHANICAL PLAN
1:50

N.B
All TV Points to include the following provision: 2 x co ax cables (aerial), 3 x CAT 6 cables (data), 1 x CAT 6A cable (TV), 1 x fibre cable (multi mode to TV). Minimum 1 x double mains socket. AV cabling to be separated from mains cables by minimum 30cm.



All existing exposed cabling to be re-run under flooring.
All existing lighting to be removed prior to proposed lighting and electrical point installation.

KEY		KEY	
CIRCUITS		LIGHTING	
	double switched socket		DL1 Recessed downlighter 12v with transformer
	double switched socket above worktop		DL2 Recessed directional 12v downlighter
	single switch socket outlet		DL3 Recessed Internal Uplighter
	Shaver socket - dual voltage		DL1 Single Trimless Downlighter
	One way light switch		DL2 Double Trimless Downlighter
	2 way light switch		DL3 Bathroom Downlighter IP 65 rated
	Dimmer switch		Recessed LED light
	Lighting control pad		Recessed mounted wall light
	Pull cord switch		Concealed strip light
	PIR detector		UC LED Tape Under Counter
	13 amp fused switched spur with neon indicator		LED Light Strip
	30 amp fused switched spur with neon indicator		W1 Wall Light 1500
	USB wall socket		P1 Pendant
	TV/FM/SAT point CAT 6A		P2 Pendant
	Telephone point		Wall Mounted Picture Light 1500
	Data connector CAT 6		Wall mounted bulk head light TBC
	Doorbell		Emergency exit light
NOTES			LED emergency ceiling light + battery back-up
All electrical work required to meet the provisions of Part P (Electrical Safety) to be designed and installed in accordance with that document. Inspection and testing to be undertaken by a competent person and an appropriate BS7671 electrical installation certificate issued prior to completion of the work. For the purpose of this regulation a competent person is registered with an electrical self-certification scheme authorised by the secretary of state.			Energy saving pendant
Compliance is necessary within the Electricity at Work Regulations 1989 as amended. Electrical installations should be designed and installed and suitably separate with appropriate distances to provide mechanical and thermal protection, employing measures that afford appropriate protection for persons against the risk of electric shock, burn or fire injuries.			Link to door sensor
Provide energy efficient lighting equaling the greater of one per 25 sq.m of dwelling floor area or part thereof or one per 4 new fixed lighting fittings. Or provide light fittings (including lamp, control gear and appropriate housing, reflector, shade or diffuser or other device for controlling the output light) that only take lamps having a luminous efficacy greater than 40 lumens per circuit-watt. External lights should automatically switch off when in use.			Ceiling mounted movement sensor
Fused spurs to be grouped and accessed through a built in cupboard.		NOTES	
Circuits and switches to be labelled C1, C2, C3 etc to show corresponding circuit.			



DISCLAIMER:
Dimensions to be verified on site. Only figured dimensions to be used and any discrepancies in dimensions are to be reported to ARDE. No dimensions are to be scaled from printed drawings. Any areas indicated on this drawing are for guidance only. No responsibility is taken for their accuracy.
There is a risk of injury or death in construction if works are not properly planned and supervised. The contractor must not undertake any elements of the work without first having carried out the necessary risk assessments and prepare detailed method statements.



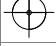




NOTES:

REV.	DESCRIPTION:	BY:	DATE:

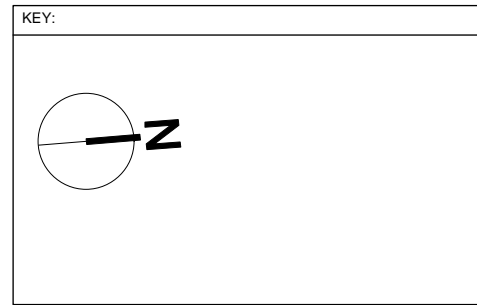
STAGE: **TENDER**

	ARDE. ARCHITECTURE & DEVELOPMENT 13 HARCOURT ROAD BROCKLEY SE4 2AJ		
Client	SHAFTESBURY COVENT GARDEN LTD		
Address	42 MONMOUTH STREET		
TITLE	ELECTRICAL PLANS		
DRAWING	122		
REV.	-	SCALE	AS STATED
STATUS	TENDER	DRAWN	VT
DATE	JULY 2019	CHECKED	-

LIGHT	TYPE	DESCRIPTION				KEY	
DL1	Single LED downlight	Trimless Round Fire Rated Fixed Clear Glass Downlight IP55 240V	 Single LED downlight	 LED bathroom downlight	 Pendant Light Bedroom	KEY	
DL2	LED bathroom downlight	Fixed 35 Clear Downlighter Fire Rated Bathroom 240V				LIGHTING	
W1	Bathroom Wall Light	Flos Glo Ball Mini c/w light				 Recessed downlighter 12v with transformer  Recessed directional 12v downlighter  Recessed Internal Uplighter  DL1 Single Trimless Downlighter  DL2 Double Trimless Downlighter  DL3 Bathroom Downlighter IP 65 rated  Recessed LED light  Recessed mounted wall light  Concealed strip light  UC LED Tape Under Counter  LED Light Strip  W1 Wall Light 1500  P1 Pendant  P2 Pendant  Wall Mounted Picture Light 1500  Wall mounted bulk head light TBC  Emergency exit light  LED emergency ceiling light + battery back-up  Energy saving pendant  Link to door sensor  Ceiling mounted movement sensor	
LED	LED strip	Strip LED 3000K warm white					
P1	Pendant Light	Client TBC					
			 Bathroom Wall light				



DISCLAIMER:
 Dimensions to be verified on site. Only figured dimensions to be used and any discrepancies in dimensions are to be reported to ARDE. No dimensions are to be scaled from printed drawings. Any areas indicated on this drawing are for guidance only. No responsibility is taken for their accuracy.
 There is a risk of injury or death in construction if works are not properly planning and supervised. The contractor must not undertake any elements of the work without first having carried out the necessary risk assessments and prepare detailed method statements.



NOTES:

REV.	DESCRIPTION:	BY:	DATE:

STAGE: **TENDER**

ARDE	ARDE. ARCHITECTURE & DEVELOPMENT 13 HARCOURT ROAD BROCKLEY SE4 2AJ		
	Client	SHAFTESBURY COVENT GARDEN LTD	
Address	42 MONMOUTH STREET		
TITLE	LIGHTING SCHEDULE		
DRAWING	691		
REV.	-	SCALE	AS STATED
STATUS	TENDER	DRAWN	VT
DATE	JULY 2019	CHECKED	-