

## **Design and Access Statement to accompany the application for listed building consent for alterations to:**

### **4 Stone Buildings, Lincoln's Inn, London, WC2A 3XT**

Applicant: Chambers of George Bompas QC  
Address: 4 Stone Buildings, Lincoln's Inn, London, WC2A 3XT  
Date of Application: 25<sup>th</sup> September 2019

## **Heritage Statement**

### **Stone Buildings**

- The group of buildings known as Stone Buildings, Listed Grade I, is located at the northern end of Chancery Lane, on the west side of the road and between Lincolns Inn North Gardens and Chancery Lane and forms part of the Bloomsbury Conservation Area
- Stone Buildings is comprised of seven buildings which contain mostly barristers' chambers and some associated residential accommodation.
- Stone Buildings was intended to be part of a somewhat grander composition of buildings which was never completed.
- The construction of No's 1-6 Stone Buildings was to the design of Sir Robert Taylor
- 3 Stone Buildings, 4 Stone Buildings, 5 Stone Buildings and 6 Stone Buildings were constructed in 1775
- 1 Stone Buildings and 2 Stone Buildings were completed in 1780.
- 7 Stone Buildings was completed in 1845 by P. Hardwick
- Stone Buildings is a homogenous group of fine classically designed buildings in the Palladian manner prominently faced on all elevations in Portland Stone.
- 1 - 2 Stone Buildings form the north end of the cul-de-sac.
- 3 - 6 Stone Buildings form the east side.
- 7 Stone Buildings terminates the terrace formed as a pavilion at the South end.
- Stone Buildings suffered considerable damage during the Second World War. During the post war restoration work, lifts were incorporated generally on the South side of the staircases along with kitchen and sanitary accommodation in the Lower Ground Floor

### **3 Stone Buildings - 6 Stone Buildings**

- The Lower Ground Floor is faced with stock brickwork with a stucco plinth
- The windows are set in deep recesses with ashlar stone lintols incorporated in the base of the Ground Floor stonework.
- The Ground Floor is formed as a continuous band of rusticated semi circular arches fashioned with voussoirs springing from impost bands with pronounced keystones and supported by rusticated piers.
- The windows and doors are formed within the arches in ashlar arched recesses.
- The first floor windows are set on a continuous moulded stone cill at the top of a continuous ashlar stone band forming a perceived plinth to the first and second floor blank ashlar colonnade section incorporating the flat arch topped recessed first and second floor windows.
- The entablature is a slightly modified Corinthian composition lacking a dentil course in the cornice.
- The whole elevation is completed by an articulated stone balustrade fronting the Third and attic storey.

#### **4 Stone Buildings**

- 4 Stone Buildings is part of the terraced façade of Stone Buildings and is constructed in the traditional form of barristers' accommodation.
- The main staircase is positioned in the centre of the building and lands at each floor with the entrances to self-contained suites of chambers on each side.
- Each set of chambers is generally formed as a mixture of imposingly proportioned chambers with two windows and more modestly proportioned rooms with one window. The West facing chambers overlook the Lincoln's Inn North gardens. The East facing chambers overlook the Stone Buildings cul-de-sac.

#### **4 Stone Buildings Ground Floor North and South**

- There is evidence that the chambers were extensively reconfigured in the post war period, a lift being installed in the South side of the staircase and room arrangements being altered on the North side of the staircase.
- The detailed architecture of the joinery differs slightly in the two sets and a post war style of replicated joinery based on the detailed architecture in the South set has been incorporated in alterations to the North set.

#### **The Benefit to 4 Stone Buildings**

- The main benefit to the building, incorporated in the following proposals, is that the historic configuration of chambers in the East side of the North set will be re-introduced as part of the alterations without harm to, or the loss of, historic fabric.



## Design and Access Statement

### 1. The application is for listed building consent to make alterations to:

- 1.1 The Clerks' Room on the East side of Ground Floor North
- 1.2 The Waiting Room on the East side of Ground Floor North
- 1.3 The smaller Chambers on the West side of Ground Floor North
- 1.4 The lobby in the centre of Ground Floor South

### 2. The proposals are to:

#### 2.1 Ground Floor North

- i. Demolish a post-war partition and associated staircase, door set and part gallery separating the existing Clerk's Room and adjacent Waiting Room. Construct a partition wall on the line of a previous historic wall including a large opening to combine the reconfigured rooms.
- ii. Alter comfort cooling/heating to the altered Clerks' Room.
- iii. Remove a pair of non-historic doors and sub-lining from a historic casing and replace with a replica painted timber door to the pattern of the historic doors.
- iv. Remove a non-historic entrance door and sub-lining from a historic casing and replace with a replica painted part glazed timber panelled door based on the pattern of the historic oak.
- v. Remove a non-historic sub-lining from a historic casing and install a replica painted part glazed timber door based on the pattern of the historic doors.
- vi. Remove non historic double door set, reinstate the full height partition and insert a recessed moulded frame glazed screen.
- vii. Remove non historic cornice and coving and install, to the new room arrangement, moulded plaster cornices similar in pattern to those of the historic cornices in adjacent chambers.
- viii. Install a replica chair rail to the rearranged Clerks' Room and to the entrance hall to the South Chambers to a pattern similar to those of historic chair rails in adjacent chambers.
- ix. Remove some existing shelves and cupboards and subsequently install new file shelves/cupboards to the Clerks' Room only.
- x. Remove the window seat from the Waiting Room window and incorporate replica apron and shutter panelling.
- xi. Install an electrically operated loft ladder to provide access to the void above the retained corridor.
- xii. Install new data distribution encasement including power and data floorboxes to suit new desk arrangement to The Clerks' Room only.

#### 2.2 Ground Floor South

- i. Remove a low suspended ceiling/storage platform from the lobby and restore and refurbish the existing walls, cornice and other disturbed fittings and finishes.
- ii. Install a services cupboard in the existing recess and an access door to the high level services void.

### 3. The reasons for the alterations:

- 3.1 Demolish a post-war partition and associated staircase, door set and part gallery separating the existing Clerk's Room and adjacent Waiting Room. Construct a partition wall on the line of a previous historic wall including a large opening to combine the reconfigured rooms.
- i. At present the two rooms in question have the separate functions of Clerks and Waiting Room.
  - ii. The Clerks' room has reached capacity of occupation and the arrangement of desk spaces determined by the room size is less than ideal for up to date and likely future methods of working.
  - iii. An adjacent, smaller, chambers can operate as a waiting room without causing any harm to the historic fabric or pattern of use of the building.
  - iv. The additional non historic post war corridor constructed to access the present waiting room will be rendered unnecessary and can be incorporated into the enlarged room
  - v. By combining the rooms, the Clerks can start to expand into the more flexible space and can benefit from improved contact and from sharing better integrated equipment.
  - vi. The existing gallery will become redundant as computer /telephone cabinets and electrical metering will be relocated in the lower ground floor and the storage cabinets will also be redundant. Occasional access to the remaining void for maintenance will be via a drop down ladder to be installed in the ceiling of the corridor
  - vii. There are additional advantages to be gained by combining the rooms
    - The Clerks work more effectively when in complete visual contact rather than in separate rooms.
    - Circulation space can be optimised with improved access to desk positions and shared facilities.
  - viii. The lighting, data and desk arrangements can be upgraded to the highest standards achievable in the context of the reinstated historic plan of the distinguished building.
- 3.2 Altering Comfort Cooling/Heating System.
- i. Modern standards of office environments generally require a degree of cooling in the summer periods due to:
    - Seasonal increased outside temperature
    - Solar gain from windows
    - Heat produced by electrical equipment
    - Heat produced by lighting
    - Heat produced by physical occupancy.
  - ii. At present there is a simple comfort cooling/heating installation which regulates the present Clerks' Room environment.
  - iii. The Waiting Room is heated by a small electric radiator located in the post-war window seat.
  - iv. Chambers intend to alter the system to provide enhanced comfort cooling/heating to the enlarged Clerks' room including removing the electric radiator.
  - v. The external unit is located under the external approach steps and landing.
  - vi. The system can be modified to provide the additional cooling/heating required for the larger accommodation.

- 3.3 Remove a pair of non-historic doors and sub-lining from a historic casing and replace with a replica painted timber door to the pattern of the historic doors.
  - i. The door casing is part of the historic arrangement of connecting doors between adjacent Chambers although its present use is as a cupboard.
  - ii. At present the door casing contains a pair of double non-historic pseudo-panelled doors (panel moulds planted on flush door leaves).
  - iii. It is considered beneficial to install a new painted timber panelled door, which has a pattern replicating that of the existing historic doors, in the existing historic rebate.
- 3.4 Remove non-historic sub-linings from a historic casing and install a part glazed painted timber door based on the pattern of the historic doors.
  - i. The altered room arrangement will cause the door casing to revert to the door to the enlarged room which was its historic function.
  - ii. At present the doorcase lacks a door.
  - iii. The doorway will become the reception position for visitors to Chambers
  - iv. It is considered beneficial to install a new painted timber panelled door, which has a pattern replicating that of the existing historic doors, in a reinstated rebate following the removal of the non historic inserted sub-lining.
  - v. It is not considered harmful to construct the door leaf with the top four panels glazed to allow Reception to view the corridor and indicate the door's function as Reception to the visitor.
- 3.5 Remove a non-historic inner entrance door and sub-lining from a historic casing and replace with a painted part glazed timber panelled door based the pattern of the historic oak.
  - i. It would seem that at some point in the recent past, possibly during the post war alterations and repairs, the historic inner entrance door was removed.
  - ii. It is likely that it was replaced by a half glazed timber panelled door and a sub lining as the replacement door leaf is smaller than the assumed historic door leaf.
  - iii. The doorway is part of the main historic entrance into Chambers comprising an inner door and a staircase oak.
  - iv. It was common for the inner entrance door to be constructed in the same robust pattern as the oak which was/is a flush panelled with staff bead panel mould timber painted timber framed door.
  - v. It is considered beneficial to install a new part glazed painted timber flush panelled door, which has a pattern base on that of the existing oak, in a reinstated doorcase following the removal of the non historic inserted sub-lining and door.
  - vi. It is not considered harmful to construct the door leaf with the top four panels glazed to allow visitors to view the corridor and landing beyond each side.
- 3.6 Remove non historic double door set and replace with upper level glazed screen.
  - i. The door set is not a historic artefact although it is positioned in the vicinity of a historic doorway which would have served the smaller historic chambers facing the Stone Buildings cul-de-sac.
  - ii. At present the door set contains a pair of non-historic part glazed doors.
  - iii. The doorway acts as a main entrance to the Clerks' Room and has a significant appearance in the small corridor.

- iv. The door at the north of the corridor is to become the main entrance door to the Clerks' Room.
- v. Replacing the present double doorset with a glazed screen will diminish the importance of the feature in the corridor.
- vi. The glazed screen at this position will provide additional light to the corridor and allow visual monitoring of activity in the corridor by the Clerks.
- vii. It is considered not harmful to install a new, recessed painted timber framed glazed screen which has a pattern similar in proportion to a bottom ground floor window sash. Its position would not prevent the insertion of a historic pattern door casing should that become a necessity or desirable in the future.

### 3.7 Remove non historic cornice and coving and install, to the new room arrangement, moulded plaster cornices similar in pattern to those of the historic cornices in adjacent chambers.

- i. The running Victorian pattern of coving in the present Clerks' Room is not considered to compliment the historic architectural ornamentation of the building and it is likely that it was installed during the post-war alteration to the room arrangement.
- ii. The pattern of cornice and picture rail in the present Waiting Room is considered an inferior replication of the likely historic pattern, suitable for a superior chambers, as part of the historic architectural ornamentation of the building.
- iii. The coving and cornice do not indicate the historic arrangement of the rooms.
- iv. It is considered beneficial to install a new two part cornice in the smaller section of the enlarged Clerks' Room which has a pattern close to or replicating that of the existing historic cornice in the adjacent smaller chambers.
- v. It is considered beneficial to install a new two part cornice and picture rail in the larger section of the enlarged Clerks' Room which has an unadorned running pattern close to, or replicating that, of the existing historic cornice in the adjacent larger chambers.

### 3.8 Install a replica chair rail to the rearranged Clerks' Room and to the entrance hall to the South Chambers to a pattern similar to those of historic chair rails in adjacent chambers.

- i. Various of the adjoining chambers in Ground Floor North and Ground Floor South benefit from chair rails of various patterns, all at a similar height above floor level set by the cills of the windows.
- ii. It is likely that the chair rails were removed from the affected chambers and room during the post-war alterations.
- iii. It is considered beneficial to the proposed arrangements to provide a chair rail to a pattern continuing the pattern of the chair rail in the present waiting room.

### 3.9 Installing new shelves and cupboards.

- i. The existing storage units, shelves etc in the Clerks' Room will not be suitable for adaptation to the enlarged arrangement.
- ii. The existing bookshelves on the dividing partition in the Waiting Room will be removed when the wall is demolished.
- iii. Chambers wishes to take the opportunity to rationalise the storage and retrieval of files including keeping all files and information unobtrusively behind closed doors.

- 3.10 Remove the window seat from the Waiting Room window and incorporate replica apron and shutter panelling.
  - i. The window seat is a modern device to conceal a small electrical heating radiator which will become redundant with the modification of the comfort cooling/heating system.
  - ii. The window seat is neither appropriate nor historically significant in the altered room arrangement.
  - iii. It is considered beneficial to replicate the historic panel arrangement.
- 3.11 Install an electrically operated loft ladder to provide access to the void above the retained corridor.
  - i. To provide safe access to the service void created by reinstating the full height wall.
- 3.12 Install new data distribution encasement including power and data floorboxes to suit new desk arrangement.
  - i. The envisaged centralised grouping of desks will require centralised power, telephone and data connections to avoid dangerous trailing cables
- 3.13 Remove a low suspended ceiling/storage platform from the lobby and restore and refurbish the existing walls, cornice and other disturbed fittings and finishes.
  - i. To reinstate the historic ceiling height and retaining access to a high level services void formed when the lift was installed
- 3.14 Install a services cupboard in the existing recess and a access door to the high level services void.
  - ii. To extend some or all the existing services to a safe and accessible position whilst retaining access to the high level void for any remaining services

#### **4. The arrangements are determined by:**

- 4.1 Demolish a post-war partition and associated staircase, door set and part gallery separating the existing Clerk's room and adjacent waiting room. Construct a partition wall on the line of a previous historic wall including a large opening to combine the reconfigured rooms.
  - i The alteration which formed the existing arrangement does not have any significant historic, architectural or social merit and is confusing in the context of the historic architectural arrangement of and the historic pattern of use of the building.
  - ii The present partition wall, staircase and doorway are not of historic fabric.
    - The wall is mainly constructed using sand: cement wall finish on a metal lathe supported by timber framing. **Appendix (i)**
    - The timber skirting to the altered corridor wall and to the Clerks' Room is a modern inferior replica of the historic pattern of skirting. **Appendix (ii)**
    - The doorcase pattern does not replicate the pattern of the historic doorcases in Ground Floor North. The doorcase pattern is identical to doorcases installed in the post-war rearrangement of the walls in Ground Floor South which suggests that the Ground Floor North partition arrangement is contemporary with the Ground Floor South alterations.

- iii Evidence of the historic arrangement of walls:
    - Position of the historic door casing halfway along the corridor.
    - The additional support joist/beam in the floor along the line of the historic partition. **Appendix (iii)**
    - Change in level of the ceiling perceived in the wall panel between adjacent east facing windows. **Appendix (iv)**
    - Drawing held in Lincoln's Inn Archives titled "1-6 STONE BUILDINGS, LINCOLN'S INN, RESTORATION FOLLOWING WAR DAMAGE" **Appendix (v)**
  - iv Other indications of the historic arrangement of walls: **Appendix (vi)**
    - The historic chimneypiece in the present Waiting Room pertains to a much larger and grander room, as the adjacent larger chambers.
    - The replicated cornice in the present Waiting Room pertains to a much larger and superior room, as the adjacent large chambers.
  - v The proposed wall arrangement is derived from the perceived historic wall arrangement and is considered favourable to the understanding and appreciation of the overall historic arrangement of this important building.
  - vi The inclusion of a large opening in the proposed wall allows for an improved provision for the Clerks whilst not causing any significant damage to or removal of historic fabric
- 4.2 Altering Comfort Cooling/Heating System.
- i Installing the minimum internal units to provide the required level of cooling/heating.
  - ii Causing the minimum damage to the exposed historic fabric.
  - iii Positioning the internal units in discreet positions to minimise the disruption to the visual enjoyment of the historic arrangement.
- 4.3 Remove a pair of non-historic doors and sub-lining from a historic casing and replace with a replica painted timber door to the pattern of the historic doors.
- i The historic arrangement and positions of the connecting doors to the rooms.
  - ii The construction and proportion of the panels, stiles and rails of the historic door leaves.
- 4.4 Remove non-historic sub-linings from a historic casing and install a part glazed painted timber door based on the pattern of the historic doors.
- i The historic arrangement and positions of the primary doors to the rooms.
  - ii The construction and proportion of the panels, stiles and rails of the historic door leaves.
- 4.5 Remove a non-historic entrance door and sub-lining from a historic casing and replace with a painted part glazed timber panelled door based on the pattern of the historic oak.
- i The historic arrangement and positions of the oak and inner entrance door.
  - ii The construction and proportion of the panels, stiles and rails of the historic oak and inner entrance door.
- 4.6 Remove non historic double door set and replace with upper level glazed screen.
- i Positioning a glazed panel to allow the clerks to monitor the activity in the corridor.
  - ii The construction and proportion of the glazing to the historic window sashes.



- 4.7 Remove non historic cornice and coving and install, to the new room arrangement, moulded plaster cornices similar in pattern to those of the historic cornices in adjacent chambers.
  - i The arrangement, positions and designs of the historic cornices to the adjacent chambers.
- 4.8 Install a replica chair rail to the rearranged Clerks' Room to a pattern similar to those of historic chair rails in adjacent chambers.
  - i The arrangement, position and design of the historic chair rail in the present Waiting Room.
- 4.9 Installing new shelves and cupboards.
  - i Maintaining the visual appreciation of the historic architectural fittings and features.
  - ii Minimising damage to existing architectural fittings and features.
- 4.10 Remove the window seat from the Waiting Room window and reinstate historic apron and shutter panelling.
  - i. The historic arrangement of apron panelling to the adjacent windows and shutter boxes.
- 4.11 Install an electrically operated loft ladder to provide access to the void above the retained corridor.
  - i. The ceiling height and position of the floor of the remaining void whilst avoiding disruption to existing cornices.
- 4.12 Install new data distribution encasement including power and data floorboxes to suit new desk arrangement.
  - i Maintaining the visual appreciation of the historic architectural fittings and features
  - ii Minimising damage to existing architectural fittings and features.
- 4.13 Remove a low suspended ceiling/storage platform from the lobby and restore and refurbish the existing walls, cornice and other disturbed fittings and finishes.
  - i The room arrangement and architectural fittings installed during the post war alterations to install a lift.
- 4.14 Install a services cupboard in the existing recess and an access door to the high level services void.
  - i Providing modern access doors and frames within the post war altered wall arrangement

## 5. Proposals

- 5.1 Demolish a post-war partition and associated staircase, door set and part gallery separating the existing Clerk's room and adjacent waiting room. Construct a partition wall on the line of a previous historic wall including a large opening to combine the reconfigured rooms.
- i Protect adjacent architectural features and demolish the walls, staircase and doorway.
  - ii Construct a timber framed, plaster finished plasterboard wall on the perceived line of a historic wall including a large opening to connect the two adjacent rooms.
  - iii Form the opening to the height shown on the accompanying plans to retain a visual understanding of the perceived historic pattern of the rooms.
  - vii Form the vertical and horizontal arrises as circular return mouldings (pole beads)
  - viii Form return skirting board across the width of the wall with retained and replica sections of historic skirting.
  - ix Form a cut out in the ceiling of the remaining corridor and install a pull down ladder system with a frameless finish to the ceiling level.
- 5.2 Installing Comfort Cooling
- i Install the indoor units as high level wall mounted fan coil units (fcu's) on the south walls of the rooms not immediately apparent when entering the rooms.
  - ii Install the fcu's so that pipework and cabling can be routed through concealed spaces in the cupboards to minimise the appearance.
- 5.3 Remove a pair of non-historic doors and sub-lining from a historic casing and replace with a replica painted timber door based on the pattern of the historic doors.
- i Carefully remove the non-historic doors and sub-linings from the historic doorcase and carry out any relevant repairs and restoration to the remaining linings.
  - ii Install a new door leaf on a pair and a half of door butts. The new door leaf to be a replica of the historic connecting door leaves to the adjacent chambers including raised, fielded and edge-beaded panels and a vertical quirk moulding to the middle stile.
- Appendix (vii)      Appendix (viii)
- 5.4 Remove non-historic sub-linings from a historic casing and install a part glazed painted timber door based on the pattern of the historic doors
- i Carefully remove the non-historic sub-linings from the historic doorcase and carry out any relevant repairs and restoration to the remaining linings.
  - ii Install new door stops to the lining of a proportion to retain a suitable rebate both sides of the lining.
  - iii Install a new door leaf on a pair and a half of door butts. The new door leaf to be a based on the pattern of the historic primary door leaves to the adjacent chambers including raised, fielded and edge-beaded panels and a vertical quirk moulding to the middle stile.
- Appendix (vii)      Appendix (viii)
- iv The top four panels to be glazed.

- 5.5 Remove a non-historic entrance door and sub-lining from a historic casing and replace with a painted part glazed timber panelled door based on the pattern of the historic oak.
  - i Carefully remove the non-historic doorleaf sub-lining from the historic doorcase and carry out any relevant repairs and restoration to the remaining linings.
  - ii Install a new door leaf on a pair and a half of door butts. The new door leaf to be a replica of the historic inner entrance door leaf including flush panels with staff bead panel mouldings and staff bead mouldings to the upper glazed panels. **Appendix (ix)**
  - iii The top four panels to be glazed.
- 5.6 Remove non historic double door set and replace with upper level glazed screen.
  - i Carefully remove the non-historic doorset from the partition.
  - ii Following alterations to the partition, including continuing the partition up to ceiling level, install an upper level recessed glazed painted timber screen.
- 5.7 Remove non historic cornice and coving and install, to the new room arrangement, moulded plaster cornices similar in pattern to those of the historic cornices in adjacent chambers.
  - i Carefully remove the non-historic coving and two part cornice from the walls.
  - ii Following the construction of the new wall and the reinstatement of the wall above gallery, prepare the new and existing walls and install unadorned running profiles plaster moulded cornices as two part and picture rails with sections to match the cornices in the adjoining chambers as closely as possible
- 5.8 Install a replica chair rail to the rearranged Clerks' Room and to the entrance hall to the South Chambers to a pattern similar to those of historic chair rails in adjacent chambers.
  - i Install a painted timber moulded chair rail to the perimeter of the new room arrangements.
- 5.9 Installing new shelves and cupboards.
  - i The wall mounted shelves and cupboards will be restricted in height so that the articulation of the cornices around the tops of the walls and chimneybreasts is fully appreciated
  - ii Install the floor mounted shelves as restrained freestanding units with loadbearing framing and infill panels to maintain the existing historic and replica skirting boards in position.
- 5.10 Remove the window seat from the Waiting Room window and reinstate historic apron and shutter panelling.
  - i Carefully remove the window seat, back panel and the side panelling installed under the shutter box.
  - ii Make good supporting framework and install replica painted timber panelling to the window apron and the panels below the shutter box.

- 5.11 Install an electrically operated loft ladder to provide access to the void above the retained corridor
  - i Carefully form a rectangular hole in the existing ceiling avoiding damage to existing cornice.
  - ii Make good supporting framework and install a flush cover finish purpose made electrically operated fold down ladder.
- 5.12 Install new data distribution encasement including power and data floorboxes to suit new desk arrangement.
  - i Mark out the joist positions in the floor.
  - ii Carefully mark out floors to indicate the anticipated route for cable containment between joists from cable source to terminal positions to minimise disruption to the floor boards.
  - iii Carefully cut floorboards to alternating joist positions, take up floorboards and de-nail and subsequently store for refixing in original position.
  - iv Where necessary mark out notch positions to affected structure as decreed by the structural engineer and saw cut the notched to precise dimensions to accommodate the containment system.
  - v Determine positions for floor boxes between joists and carefully carry out trimming between joists for the floor box bases.
  - vi Install the cable containment system including steel plating over the notches
  - vii Replace and fix floor boards to original positions including forming the openings for the floor boxes.
- 5.13 Remove a low suspended ceiling/storage platform from the lobby and restore and refurbish the existing walls, cornice and other disturbed fittings and finishes.
  - i Remove the painted timber bookcases and expose the walls and skirtings for repair, refurbishment.
  - ii Carefully demolish the storage platform and expose the walls for repairs, refurbishment.
  - iii Construct plasterboard and finish stud wall in line with the post war plastered brick wall
  - iv Install replica skirting boards to a pattern to match the existing as closely as possible
- 5.14 Install a services cupboard in the existing recess and an access door to the high level services void.
  - i To the stud wall install a fire resisting flush door and moulded flush frame to form a shallow enclosure for services moved from the services void.
  - ii To the existing high level access install a fire resisting flush door and moulded flush frame

## 6. Access

- i The access to the areas by the tenants, visitors and maintenance workforce is unchanged.
- ii The access to individual work stations is improved by a more efficient arrangement of desks, seating and office equipment

## Appendix

(i) Illustration of the existing partition construction



(ii) Skirting board patterns: historic to the left, modern replica to the right



- (iii) Extra, larger, joist/beam in line with the historic and proposed partitions.

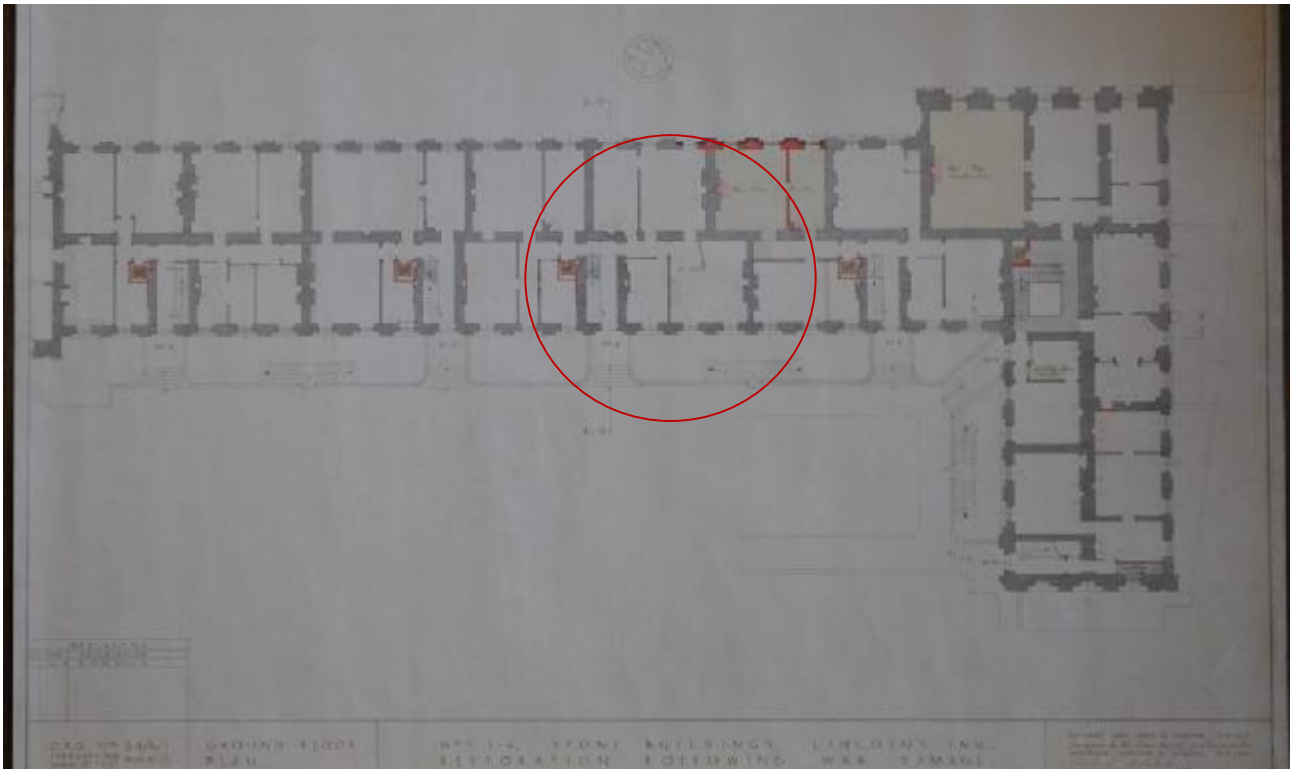


- (iv) Change in level of the ceiling





- (v) Drawing titled “1-6 STONE BUILDINGS, LINCOLN’S INN, RESTORATION FOLLOWING WAR DAMAGE”



- (vi) Historic chimneypiece in the present narrow plan Waiting Room



(vii) Raised, fielded and astragal edge-beaded panels



(viii) Raised, fielded and astragal edge-beaded panels with vertical quirk moulding to the central stile





- (ix) Flush panelled doors with staff bead panel moulds as on the illustrated existing oak and inner entrance door to the South Chambers

