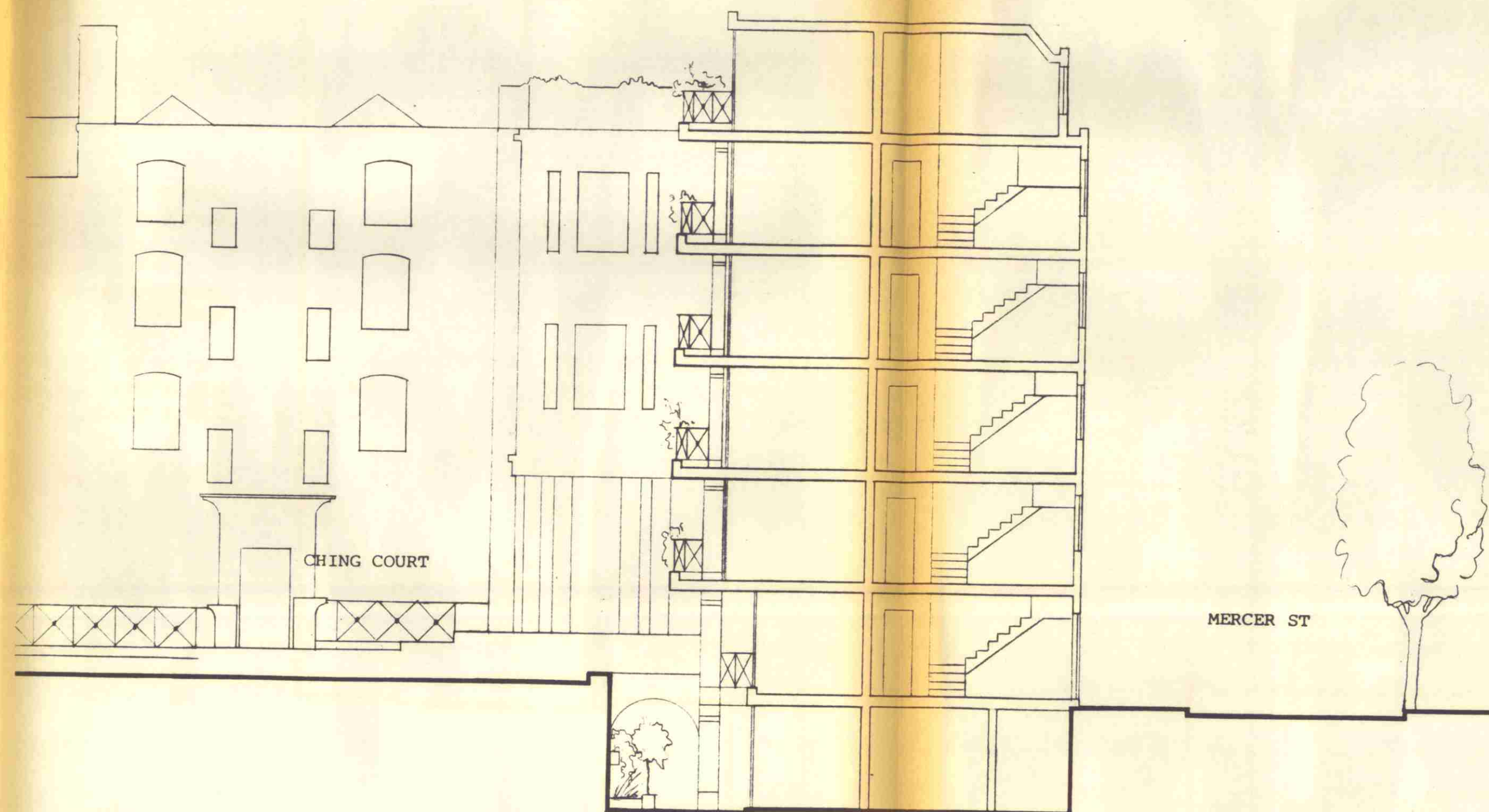




← PHASE 3 :  
SUBJECT TO SUBMISSION OF  
FURTHER DETAIL

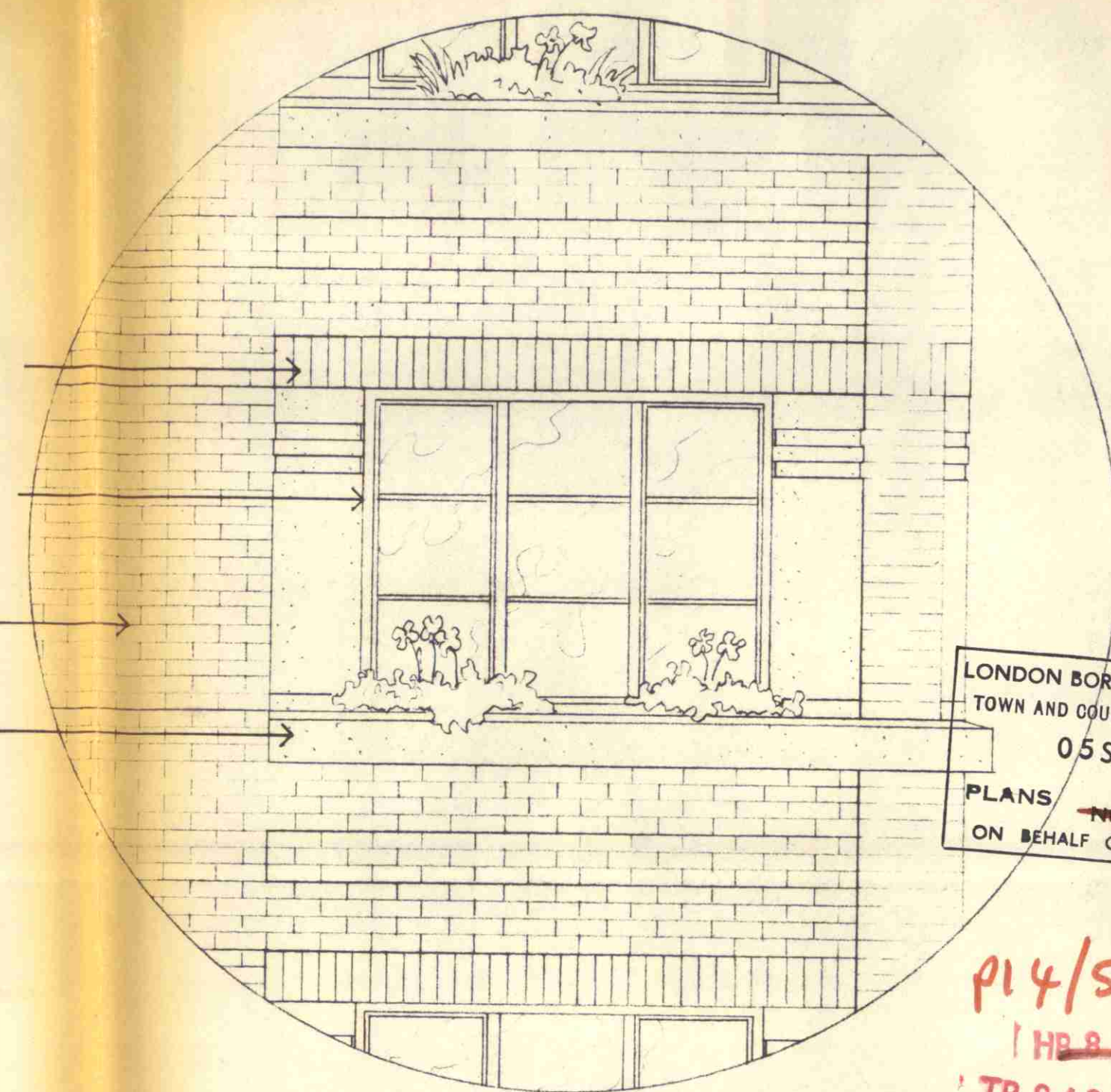
PHASE 1 : NOW COMPLETE

PHASE 2C : SUBMISSION



ELEVATION FROM SHELTON ST

SOLDIER COURSE  
LINTOL  
PAINTED TIMBER  
WINDOWS  
ALL BRICKS  
LONDON STOCK  
STONE CILL



LONDON BOROUGH OF CAMDEN  
TOWN AND COUNTRY PLANNING ACTS  
05 SEP 1984  
PLANS APPROVED  
ON BEHALF OF THE COUNCIL

PI4/59/A1  
1 HB 8170181  
TP 8401483

ELEVATION DETAIL 1:25

SECTION A-A

TERRY FARRELL PARTNERSHIP				
Job	Title	Date	Scale	Drawing no
COMYN CHING TRIANGLE	RESIDENTIAL BUILDING	21 JUNE 1984	1:100	CC2C/09
Architects - Designers - Planners * PADDINGTON STREET - LONDON W1M 4DN Telephone 01-467 2041				