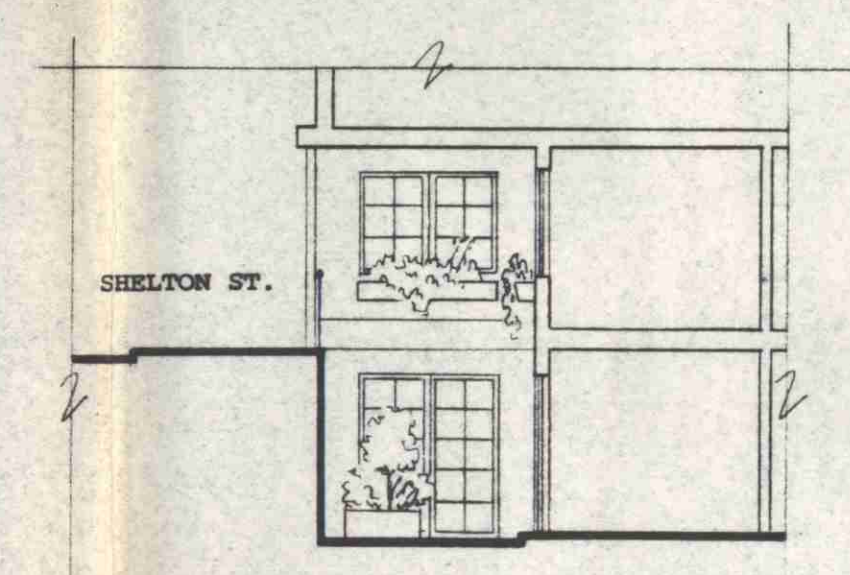




PHASE 2C : SUBMISSION  
 PHASE 2A : TO BE COMPLETED NOVEMBER 1984  
 PHASE 2B : TO COMMENCE ON SITE LATER THIS YEAR



SECTION B.B.  
THROUGH STREET CORNER

ELEVATION FROM MERCER ST

LONDON BOROUGH OF CAMDEN  
 TOWN AND COUNTRY PLANNING ACTS  
 05 SEP 1984  
 PLANS APPROVED  
 ON BEHALF OF THE COUNCIL

P14/58/A/  
 TP8401483

TERRY FARRELL PARTNERSHIP				
Job	Title	Date	Scale	Drawing no.
COYIN CHING TRIANGLE	RESIDENTIAL BUILDING	21 JUNE 1984	1:100	CC2C/08
<small>Do not scale - Check dimensions on site. This drawing is copyright</small>				
<small>Architects - Designers - Planners 1 PADDINGTON STREET, LONDON W1M 4BN Telephone 01-627 2941</small>				