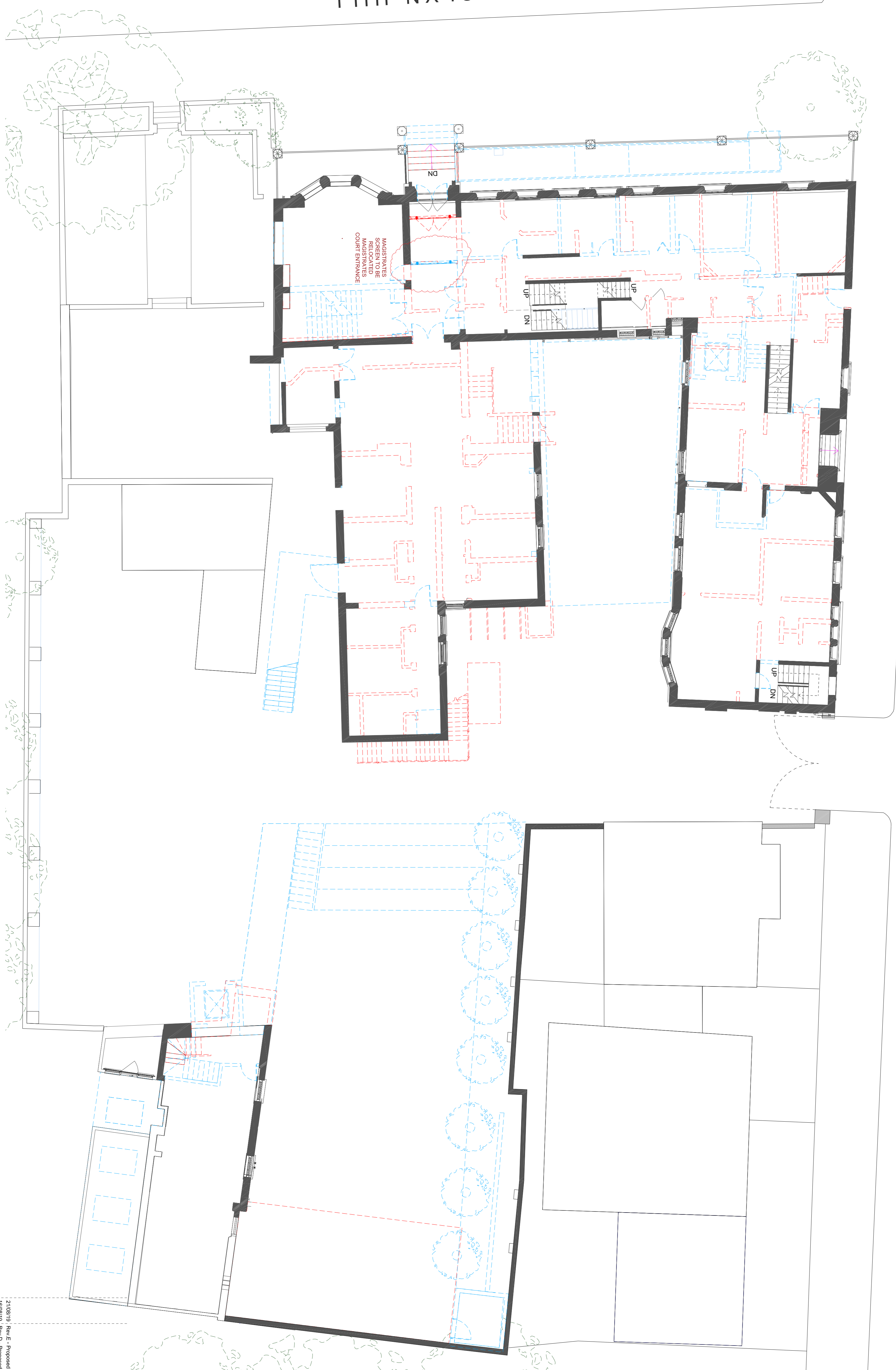


DOWNSHIRE HILL

ROSSLYN HILL

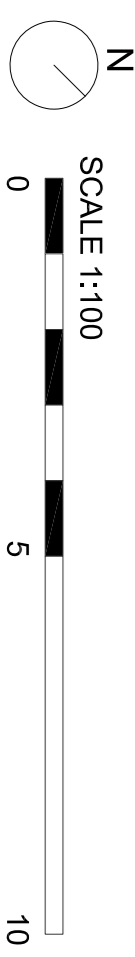


- To be demolished
- To be retained
- To be build

Ground Floor Area  
529.42 sqm

DEMOLITION

# GROUND FLOOR PLAN - DEMOLITION



## GENERAL ARRANGEMENT

Dwg No: D - 1732 - 101 E

Status:

Type: **GENERAL ARRANGEMENT**

21/08/19 Rev E - Proposed and Demolition revised  
 16/08/19 Rev D - Proposed and Demolition revised  
 06/07/19 Rev C - Blue Lines added, Note added  
 27/11/18 Rev B - Lines amended

# Date: 27/11/18  
 # Rev: 1  
 # Date: 27/11/18  
 # Rev: 1

Prep: J. Humber  
 Check: J. Humber