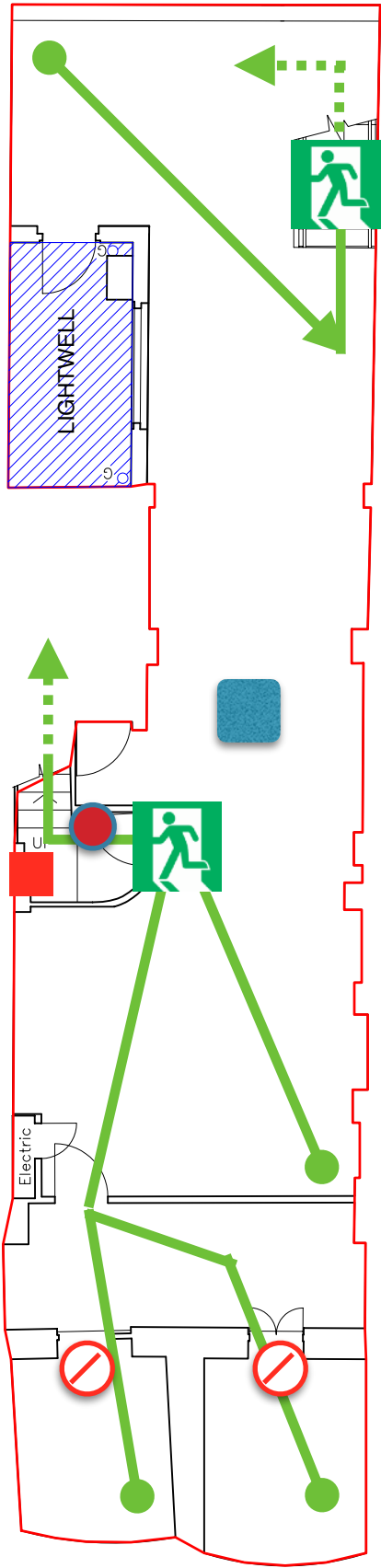
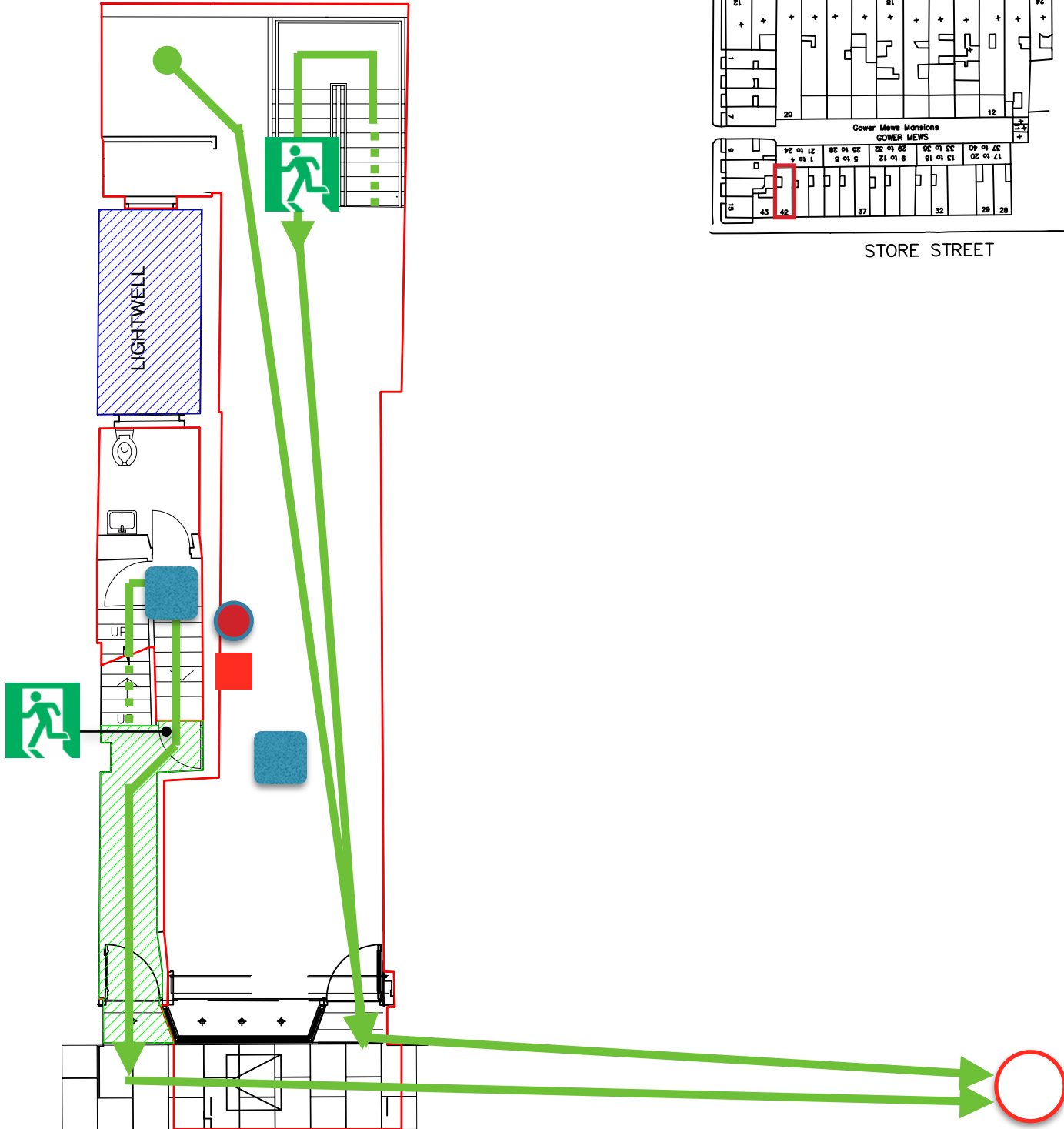


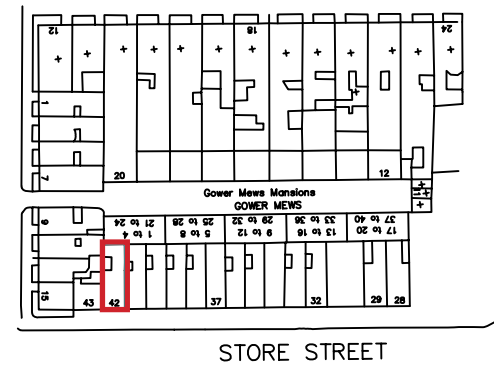
# ORCHIDYA FIRE EVACUATION PLAN










**BASEMENT**



**GROUND FLOOR**



-  SMOKE DETECTOR
-  MUSTER POINT: IN FRONT OF THE PRINTING CENTRE, 37 STORE STREET
-  LOCATION OF POWDER FIRE EXTINGUISHER - FOR SOLIDS, FLAMMABLES AND ELECTRICAL FIRES
-  FIRE ESCAPE
-  FIRE ESCAPE ROUTE
-  BREAK GLASS
-  DEAD END

**IN THE EVENT OF DISCOVERING A FIRE, IMMEDIATELY CALL 999**

ORCHIDYA  
42 STORE STREET  
BLOOMSBURY  
LONDON  
WC1E 7DB

**BASEMENT AND GROUND FLOOR PLAN**

Scale 1:100 @ A3

DATE: 28 April 2017

By: CL-S

