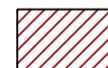

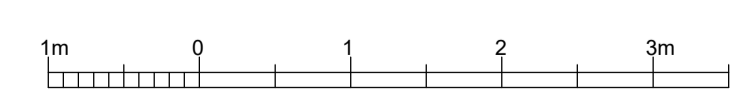


**KEY**  
 New stone  
 Lead drip detail



Revision	Date	Comments
<b>DO NOT SCALE FROM THIS DRAWING</b>		

**LISTED BUILDING CONSENT**

CITY OF LONDON CORPORATION  
 KEATS HOUSE  
 10 KEATS GROVE, LONDON NW3 2RR  
 ROOF PLAN  
 Proposed

**CARDEN & GODFREY** Architects  
Carden & Godfrey Limited  
 33 Clerkwell Chase  
 London EC1R 8AU  
 Telephone: 020 7490 0300  
 Facsimile: 020 7490 0064  
 mail@cardenandgodfrey.co.uk

Scale	Size	Date	Drawn	No.	Rev.
1:50	A1	Oct. 2018	DK	7085.08	

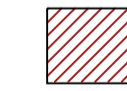

© Carden & Godfrey Ltd own the copyright of this drawing and design which must not be reproduced in whole or part without the written permission of Carden & Godfrey Ltd

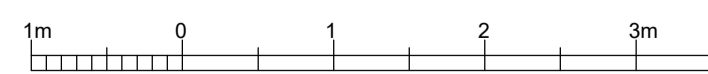
New coping stones to Annex parapet

Lead drip detail above brick offset to chimneys



63.000 ADD  
NORTH ELEVATION

**KEY**  
 New stone  
 Lead drip detail



Revision	Date	Comments
<b>DO NOT SCALE FROM THIS DRAWING</b>		

**LISTED BUILDING CONSENT**

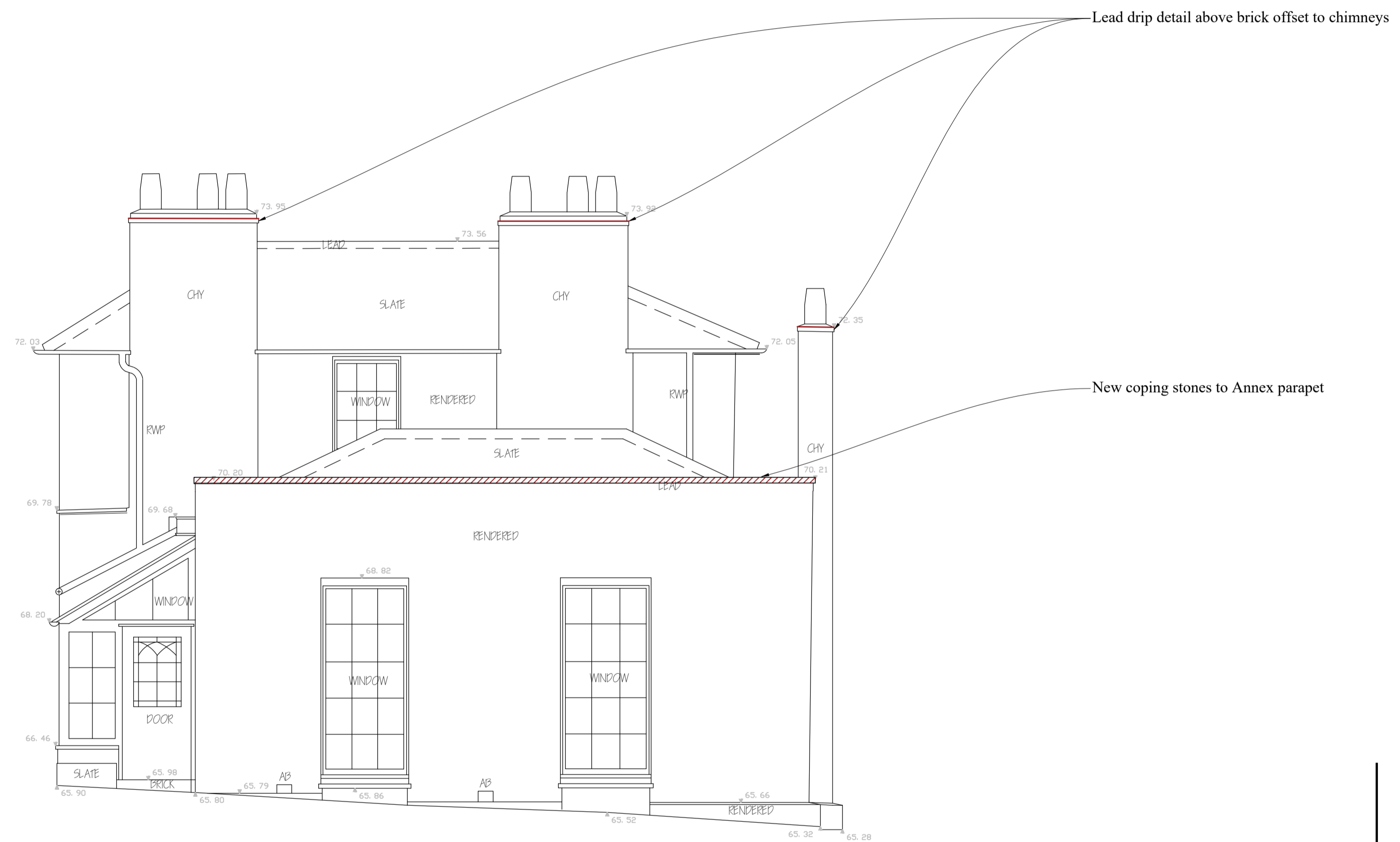
CITY OF LONDON CORPORATION  
 KEATS HOUSE  
 10 KEATS GROVE, LONDON NW3 2RR  
 NORTH ELEVATION  
 Proposed

**CARDEN & GODFREY**  
 Architects

Carden & Godfrey Limited  
 33 Clerkwell Close  
 London EC1R 8AU  
 Telephone: 020 7490 0300  
 Facsimile: 020 7490 0064  
 mail@cardenandgodfrey.co.uk

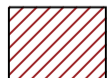

Scale	Size	Date	Drawn	No.	Rev.
1:50	A1	Oct. 2018	DK	7085.09	

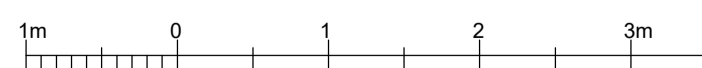
© Carden & Godfrey Ltd own the copyright of this drawing and design which must not be reproduced in whole or part without the written permission of Carden & Godfrey Ltd



63.000 ADD

EAST ELEVATION

**KEY**  
 New stone  
 Lead drip detail



Revision Date Comments  
**DO NOT SCALE FROM THIS DRAWING**

**LISTED BUILDING CONSENT**

CITY OF LONDON CORPORATION  
 KEATS HOUSE  
 10 KEATS GROVE, LONDON NW3 2RR  
 EAST ELEVATION  
 Proposed

**CARDEN & GODFREY** Architects  
 Carden & Godfrey Limited  
 33 Clerkwell Chase  
 London EC1R 8AU  
 Telephone: 020 7490 0300  
 Facsimile: 020 7490 0004  
 mail@cardenandgodfrey.co.uk

Scale	Size	Date	Drawn	No.	Rev.
1:50	A1	Oct. 2018	DK	7085.10	

© Carden & Godfrey Ltd own the copyright of this drawing and design which must not be reproduced in whole or part without the written permission of Carden & Godfrey Ltd

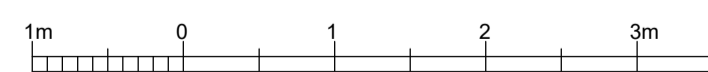
Lead drip detail above brick offset to chimneys



New coping stones to Annex parapet

63.000 ADD

SOUTH ELEVATION



- KEY**
- New stone
  - Lead drip detail

Revision Date Comments  
**DO NOT SCALE FROM THIS DRAWING**

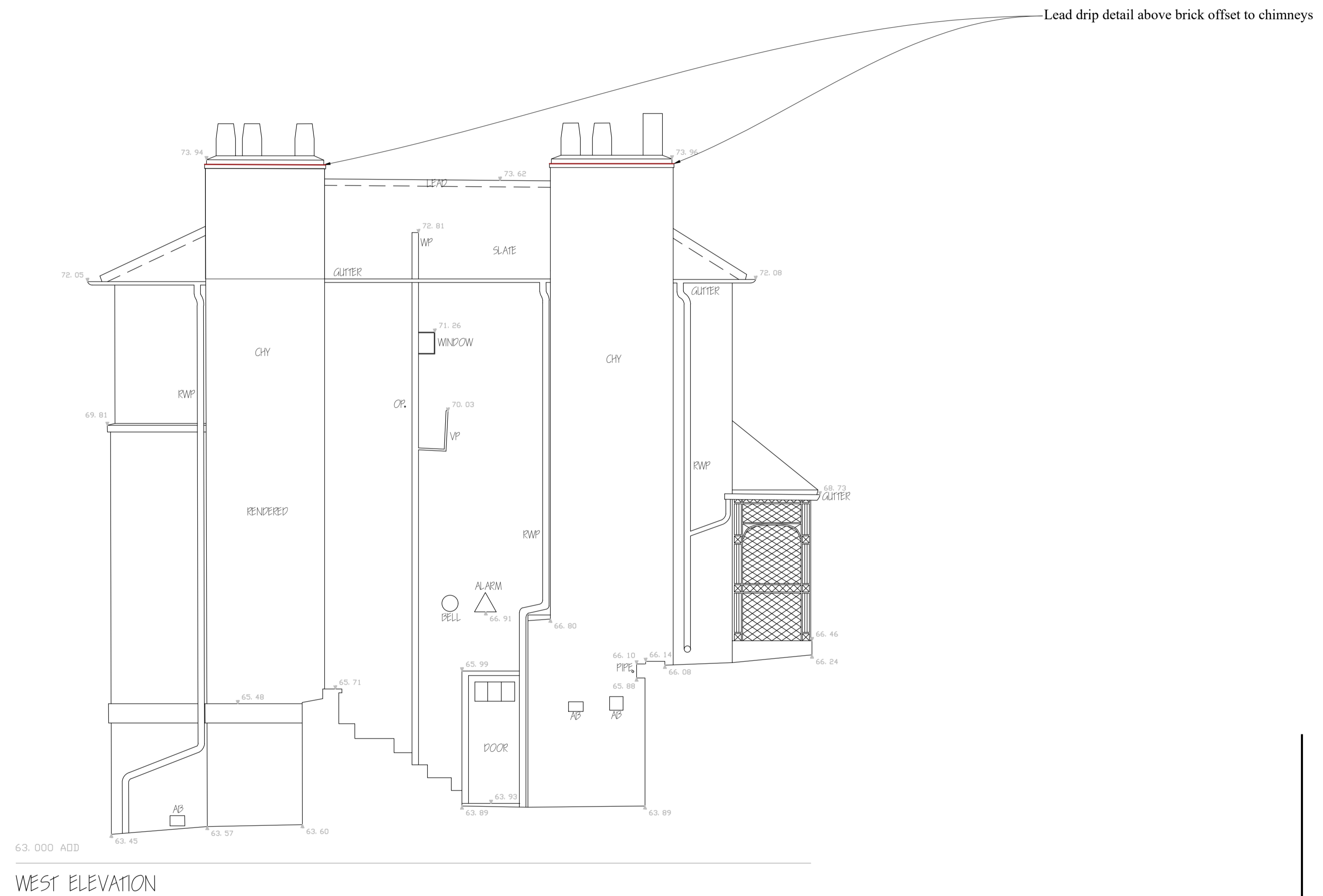
**LISTED BUILDING CONSENT**

CITY OF LONDON CORPORATION  
 KEATS HOUSE  
 10 KEATS GROVE, LONDON NW3 2RR  
 SOUTH ELEVATION  
 Proposed

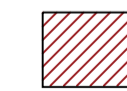

**CARDEN & GODFREY** Architects  
Carden & Godfrey Limited  
 33 Clerkwell Chase  
 London EC1R 8AU  
 Telephone: 020 7490 0300  
 Facsimile: 020 7490 0004  
 mail@cardenandgodfrey.co.uk

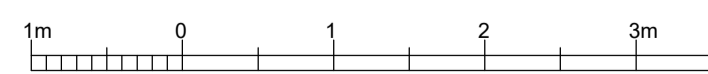
Scale	Size	Date	Drawn	No.	Rev.
1:50	A1	Oct. 2018	DK	7085.11	

© Carden & Godfrey Ltd own the copyright of this drawing and design which must not be reproduced in whole or part without the written permission of Carden & Godfrey Ltd



WEST ELEVATION

**KEY**  
 New stone  
 Lead drip detail



Revision Date Comments  
**DO NOT SCALE FROM THIS DRAWING**

**LISTED BUILDING CONSENT**

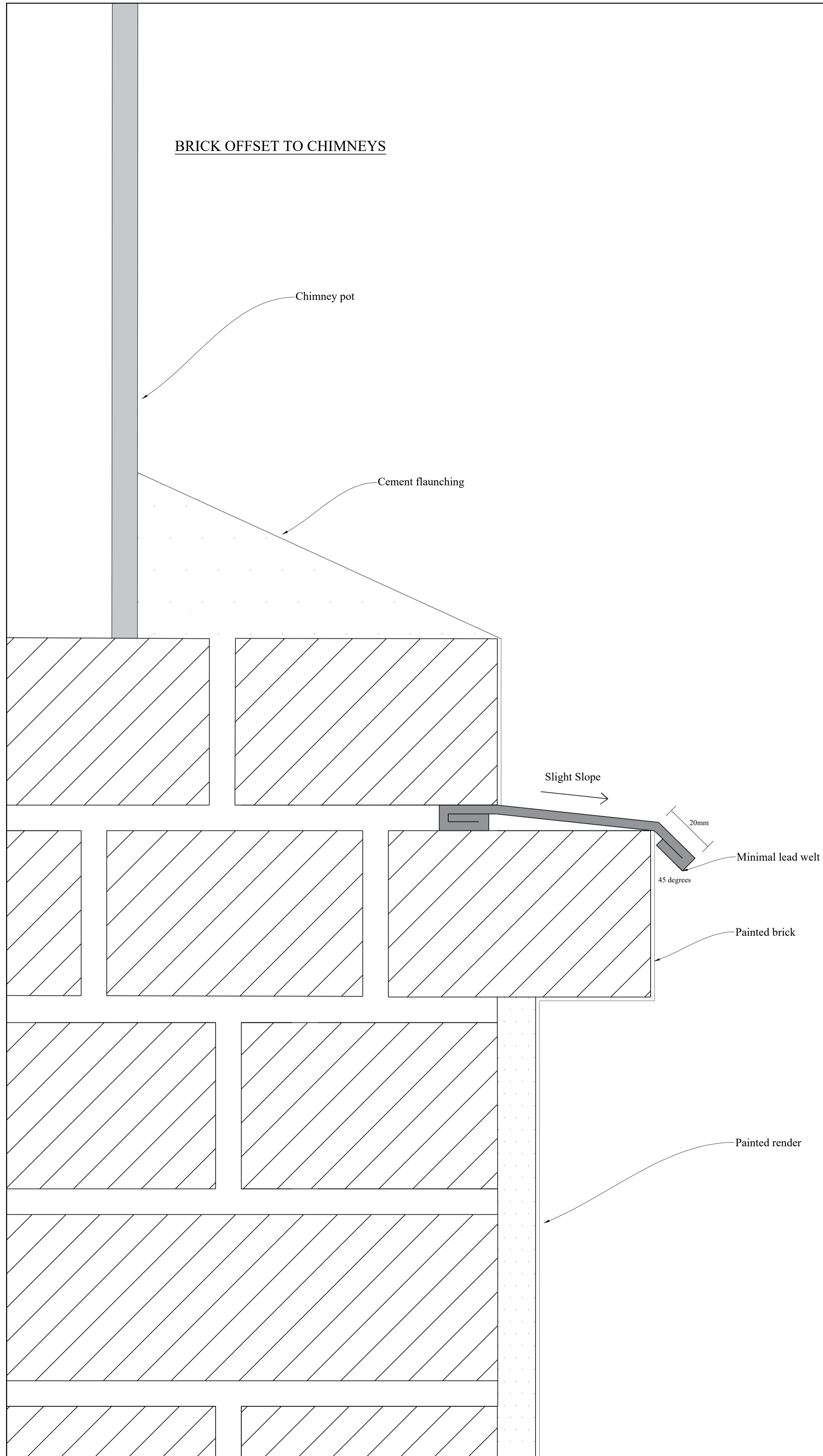
CITY OF LONDON CORPORATION  
 KEATS HOUSE  
 10 KEATS GROVE, LONDON NW3 2RR  
 WEST ELEVATION  
 Proposed

**CARDEN & GODFREY** Architects  
 Carden & Godfrey Limited  
 33 Clerkwell Close  
 London EC1R 8AU  
 Telephone: 020 7490 0300  
 Facsimile: 020 7490 0004  
 mail@cardenandgodfrey.co.uk

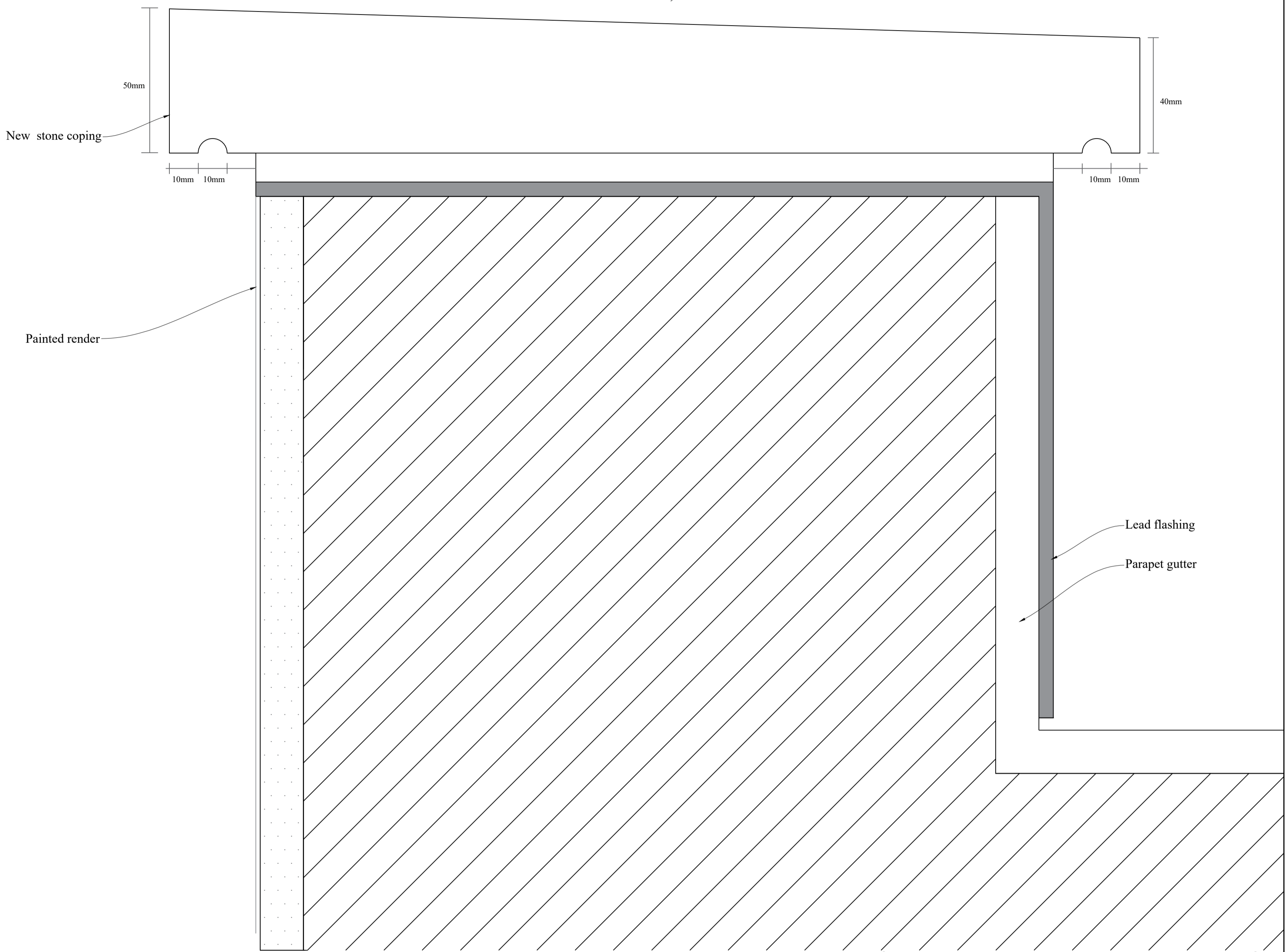
Scale	Size	Date	Drawn	No.	Rev.
1:50	A1	Oct. 2018	DK	7085.12	

© Carden & Godfrey Ltd own the copyright of this drawing and design which must not be reproduced in whole or part without the written permission of Carden & Godfrey Ltd

BRICK OFFSET TO CHIMNEYS



Fall to gutter



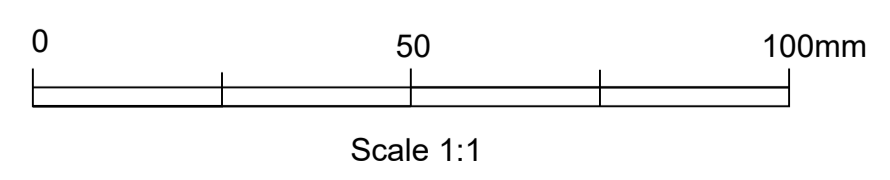
ANNEX PARAPET

Revision Date Comments  
**DO NOT SCALE FROM THIS DRAWING**

**PROPOSED**

City of London Corporation  
 Keats House  
 Chimney and Annex parapet details  
 As Proposed

**CARDEN & GODFREY** Architects  
Carden & Godfrey Limited  
 33 Clerkenwell Chase  
 London EC1R 6AJ  
 Telephone: 020 7490 0300  
 Facsimile: 020 7490 0004  
 mail@cardenandgodfrey.co.uk



Scale	Size	Date	Drawn	No.	Rev.
1:1	A1	June 2018	DK	7085.13	

© Carden & Godfrey Ltd own the copyright of this drawing and design which must not be reproduced in whole or part without the written permission of Carden & Godfrey Ltd