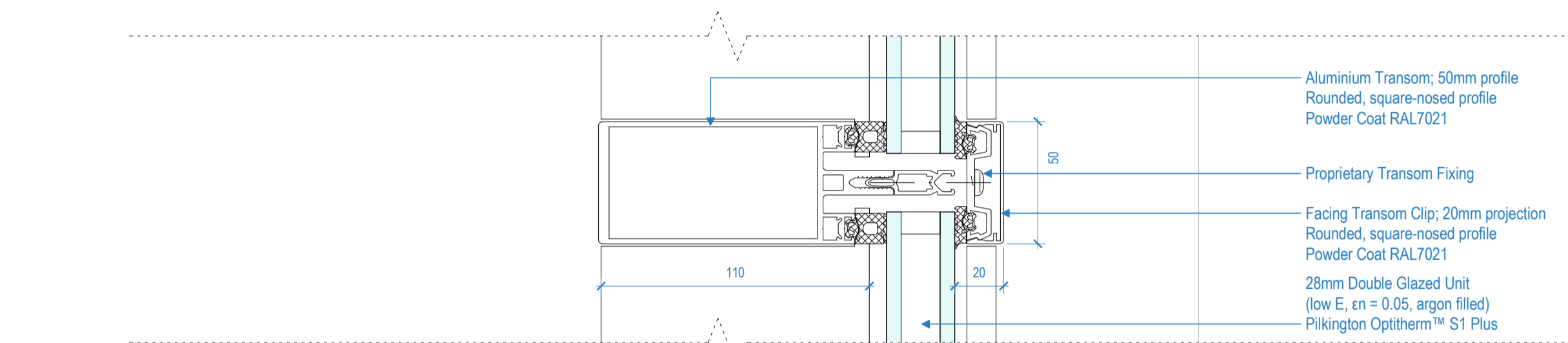
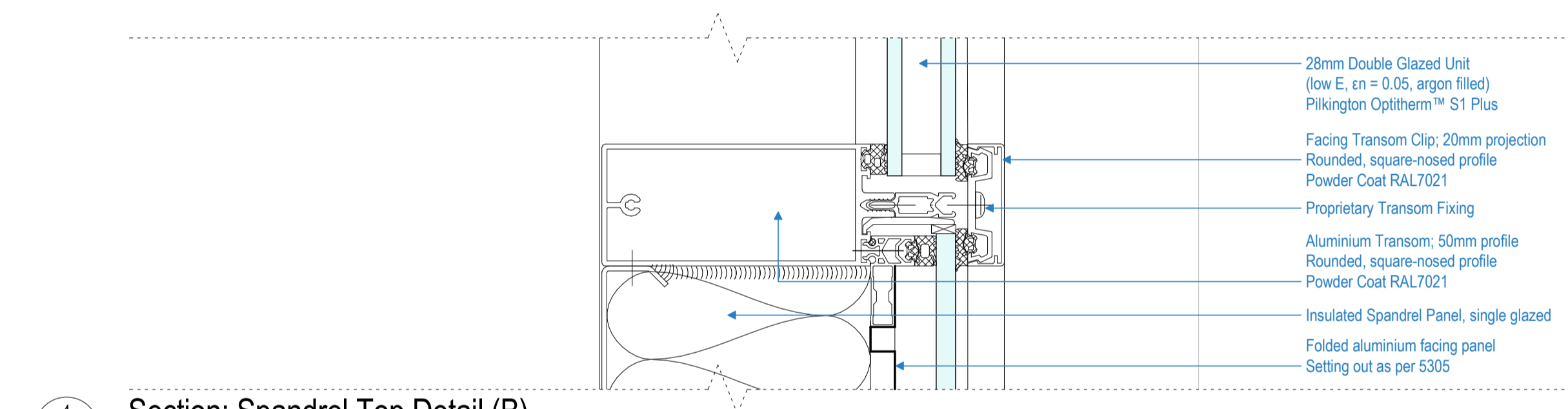


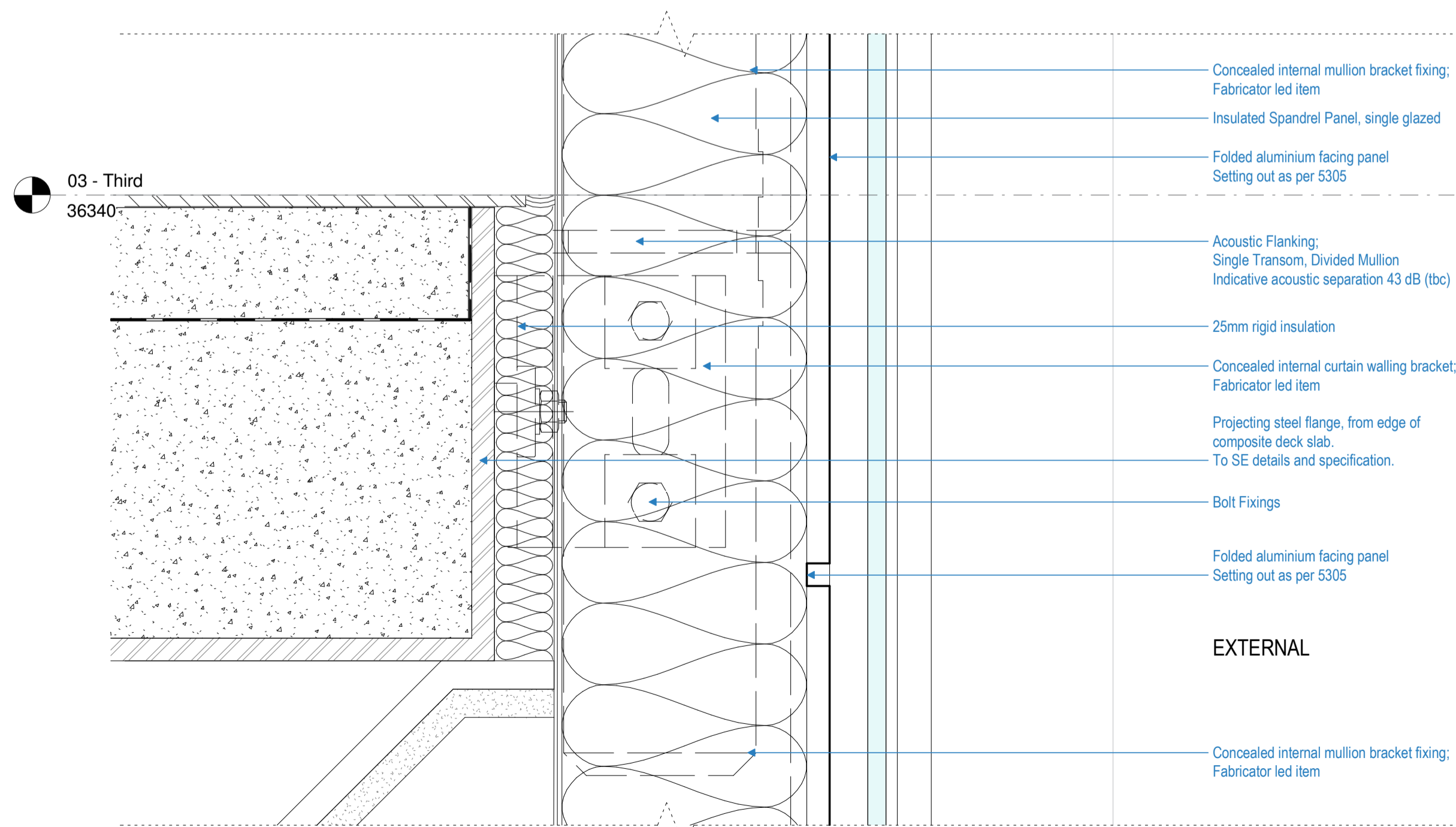
2 Section: Head Detail (B) 1:2



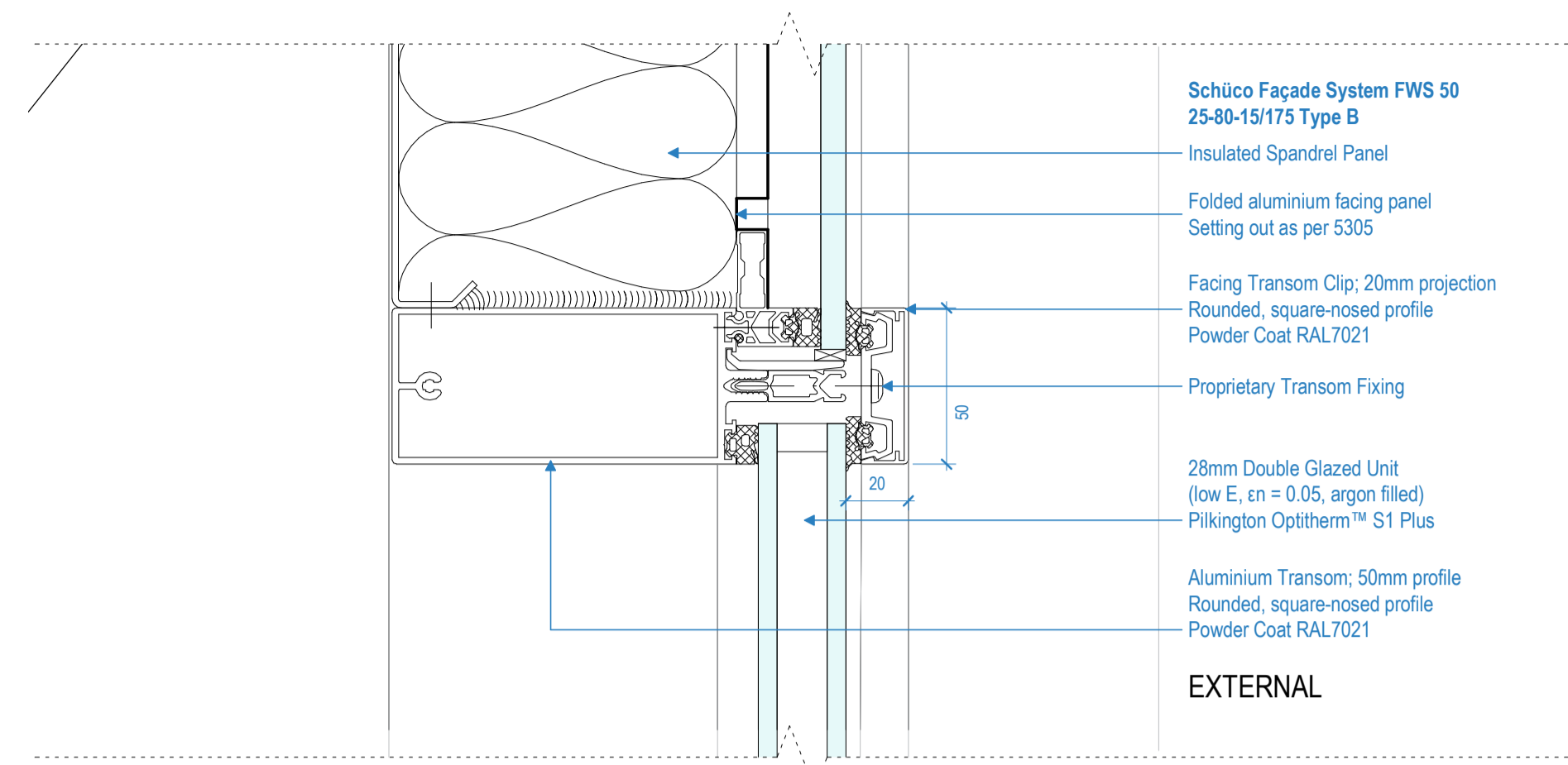
3 Section: Transom Detail (B) 1:2



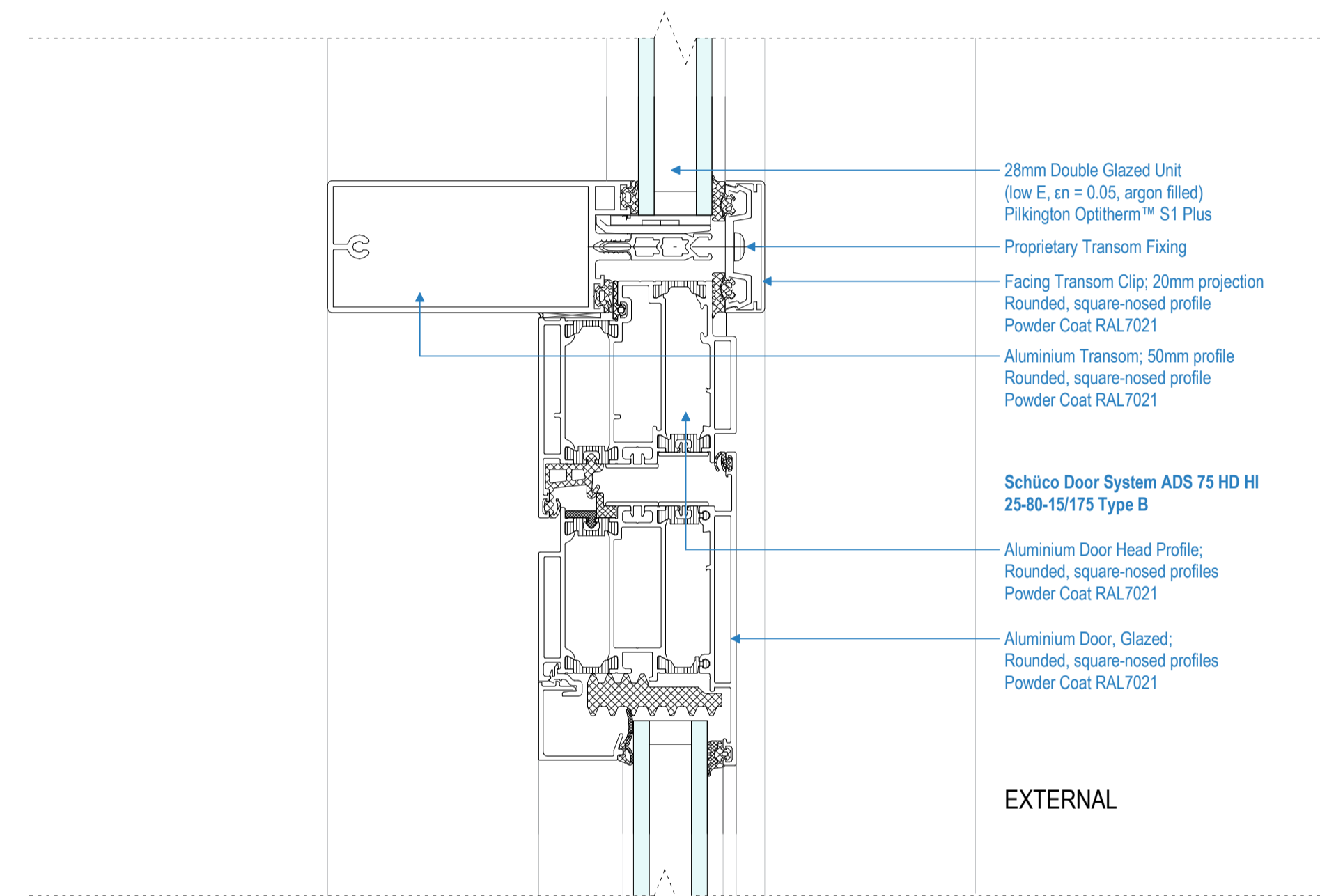
4 Section: Spandrel Top Detail (B) 1:2



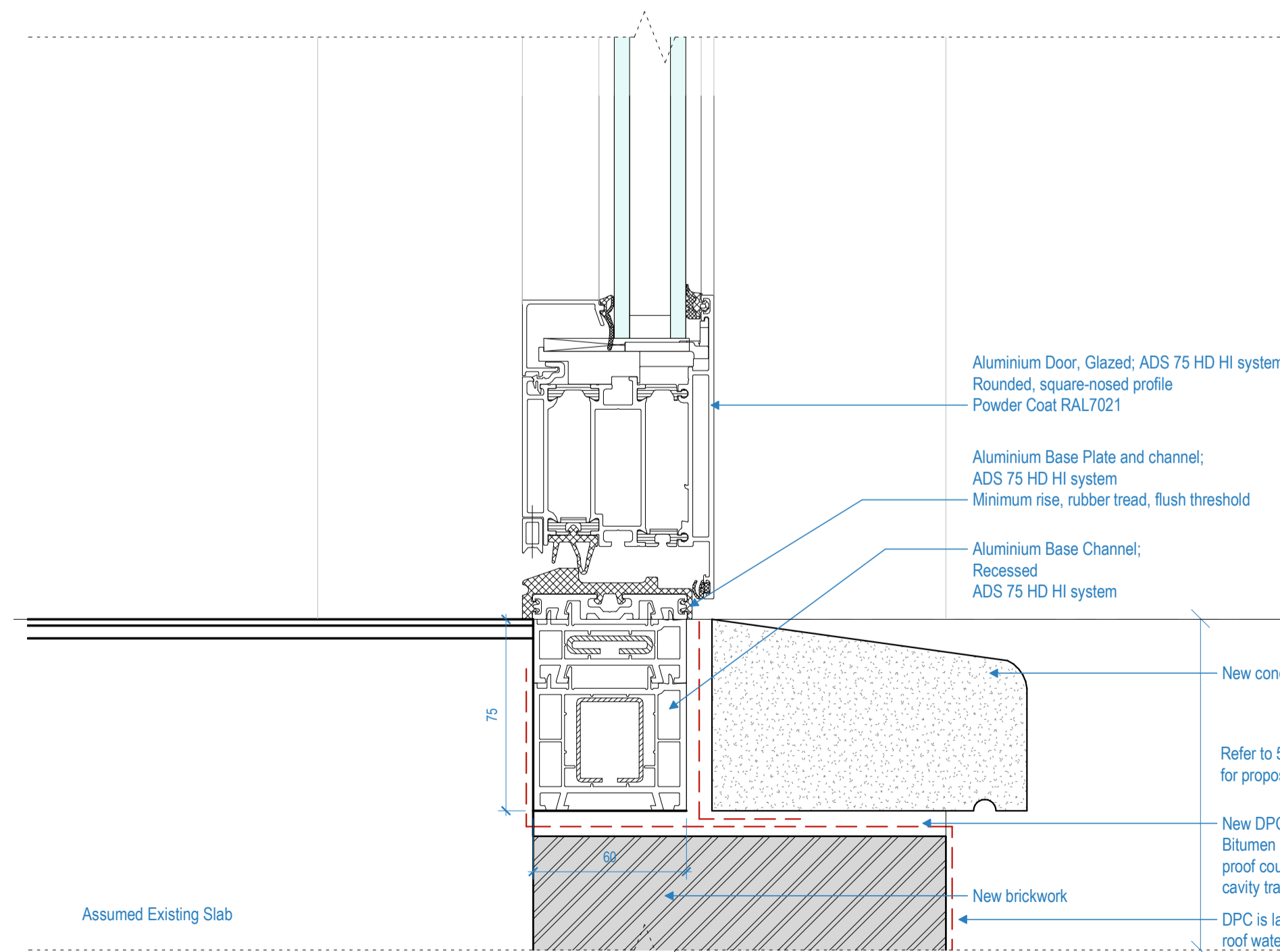
5 Section: Intermediate Floor Detail (B) 1:2



1 Section: Spandrel Bottom Detail (B) 1:2

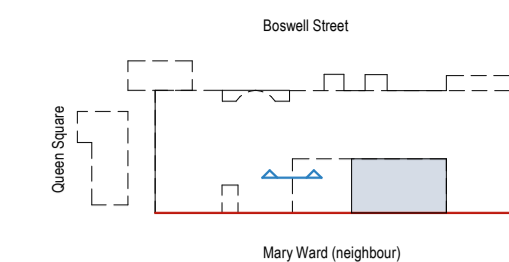


6 Section: Door Head Detail (B) 1:2

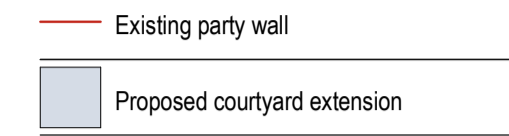


7 Section: Door Base Detail (B) 1:2

Key Plan

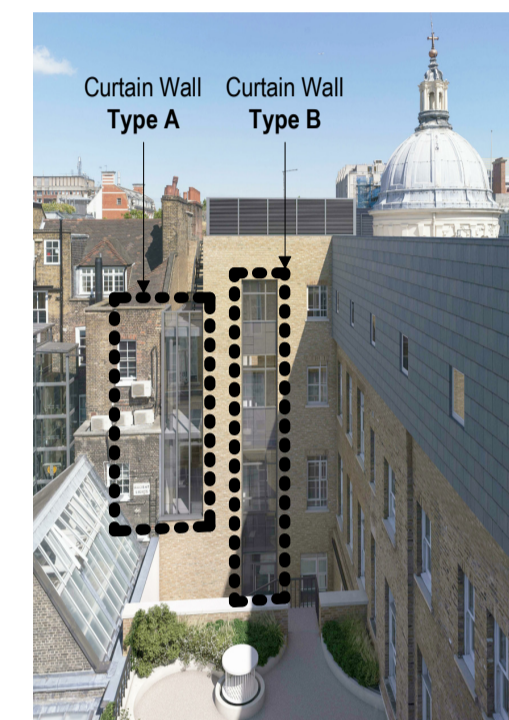


Key



Notes:

- Party wall side is inaccessible; to be developed with Kier/subcontractor with the view that a unitised solution may be adopted. Refer to 5330, 5331, 5332, 5333, 5334 for curtain walling details.
- Refer to specification 25-80-15/175
- Mullion depth to be confirmed following structural review of system and confirmation of (1)
- Glazing Specification to be confirmed by Curtain Walling supplier.
- Detailed drawings or samples of materials as appropriate, to be submitted to and approved in writing by the LPA (Condition 4.d) before work is begun.



Curtain Wall Type B 25-80-15/175 Type B

Rev	Date	Details/ Amended by	Sign
C1	30.07.18	First Construction Issue / MJF	LM
A12	25.06.18	REVISED STAGE 4 ISSUE / LM / MJF	LM
A7	07.02.18	STAGE 4 SUBMISSION/ LM	AML
P1	27.11.17	Draft Stage 4 Issue / JB	LM

sonnemanntoon architects

Quality House
6-9 Quality Court
Chancery Lane
London WC2A 1HP
United Kingdom

tel: +44 (0)20 7580 8881
email: info@st-arch.co.uk
web: www.st-arch.co.uk

© This drawing is copyright

Do not scale this drawing. Architect to be informed of all discrepancies in dimensions. Contractor to check all dimensions on site.

Project title
ITALIAN HOSPITAL

Drawing title
**DETAILS: EXTERNAL ENVELOPE
Curtain Wall - Type B**

Scale Status Revision
1:2 @A1 CONSTR. C1

Drawing number
1615-ST-Q1-ZZ-DR-A-5331

