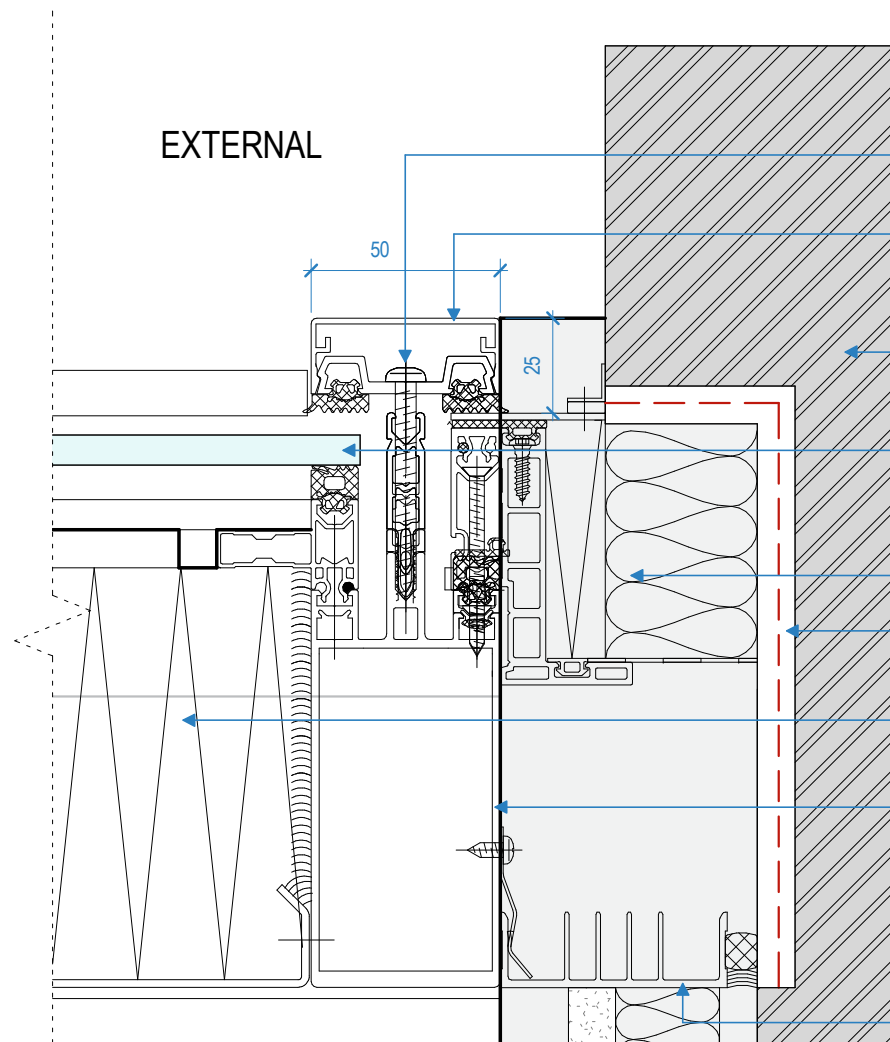
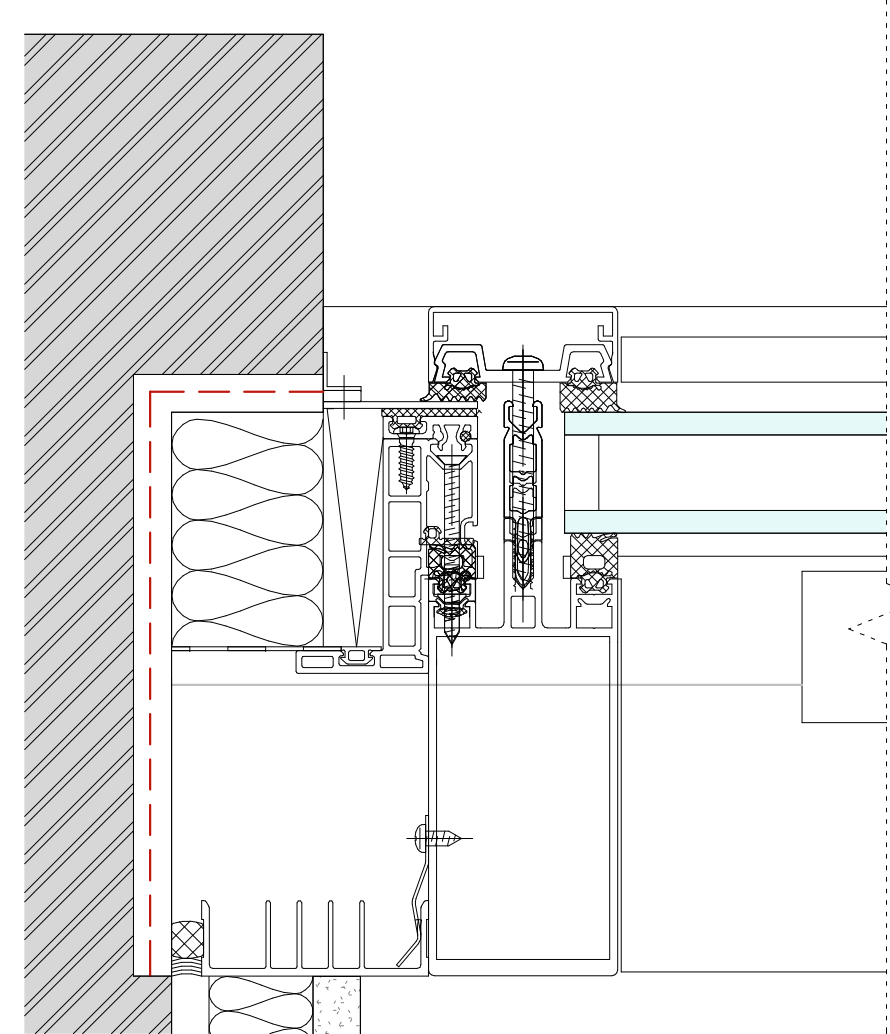


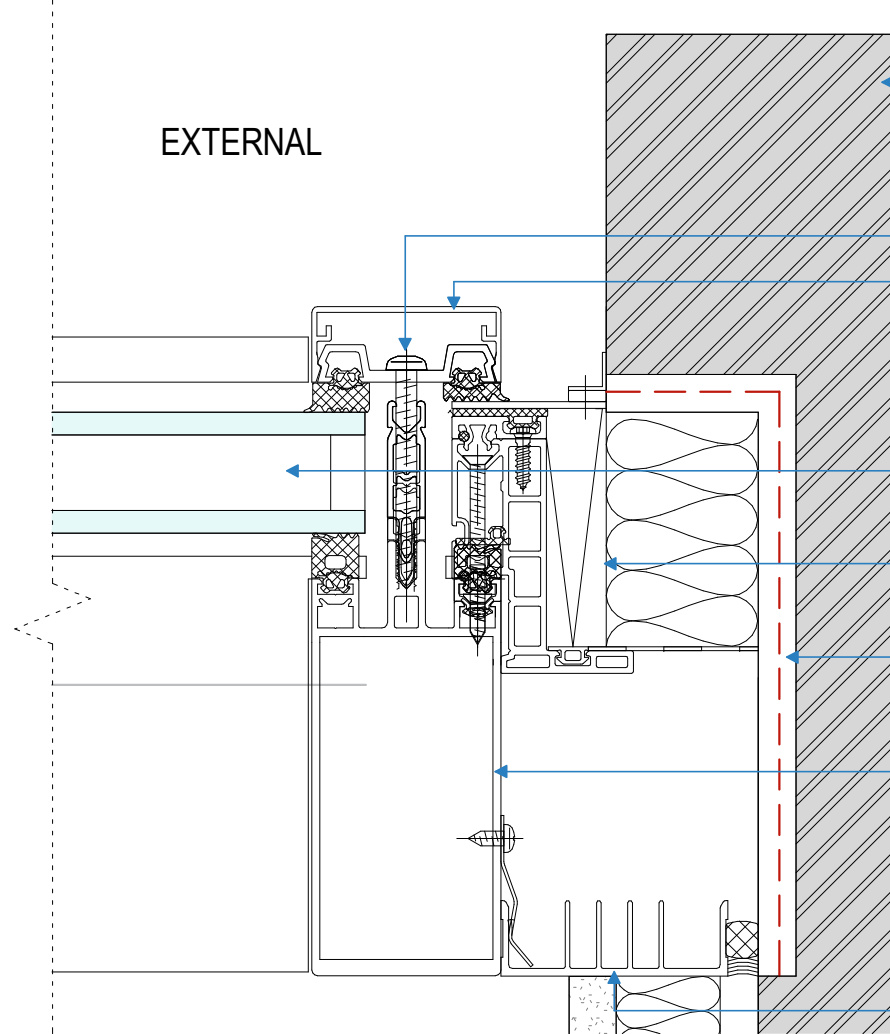
7
5332
Plan: Spandrel Panel Jamb Details (B)
1:2



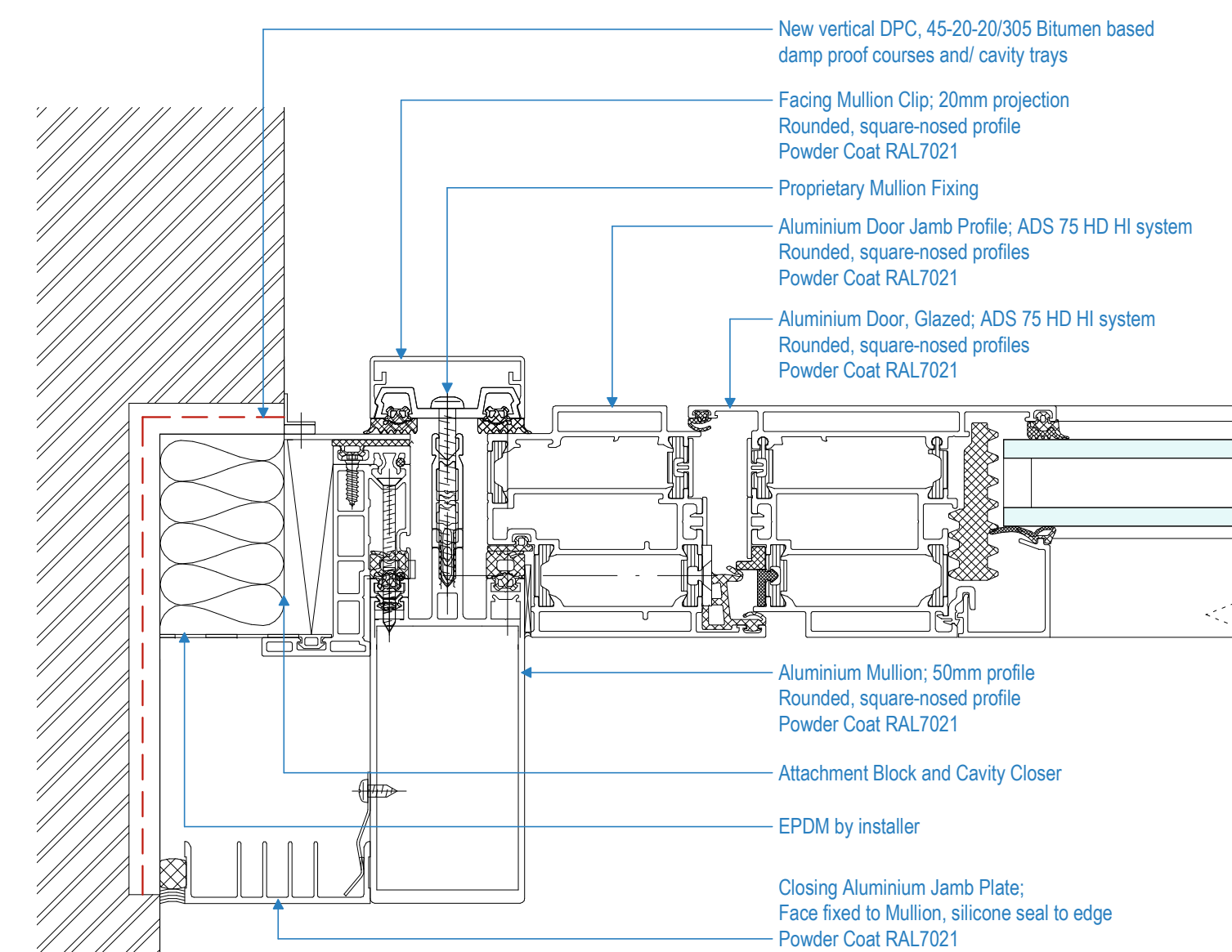
- Schüco Façade System FWS 50
25-80-15/175 Type B
- Proprietary Mullion Fixing
- Facing Mullion Clip; 20mm projection
Rounded, square-nosed profile
Powder Coat RAL7021
- New Solid Masonry Wall
25-10-55/150 Masonry External Leaf System type X1
- Single glazed pane to front
of Insulated Spandrel Panel
- Attachment Block
- New vertical DPC, 45-20-20/305 Bitumen based
damp proof courses and/ cavity trays
- Insulated Spandrel Panel
- Aluminium Mullion; 50mm profile
Rounded, square-nosed profile
Powder Coat RAL7021
- Closing Aluminium Jamb Plate;
Face fixed to Mullion, silicone seal to edge
Powder Coat RAL7021



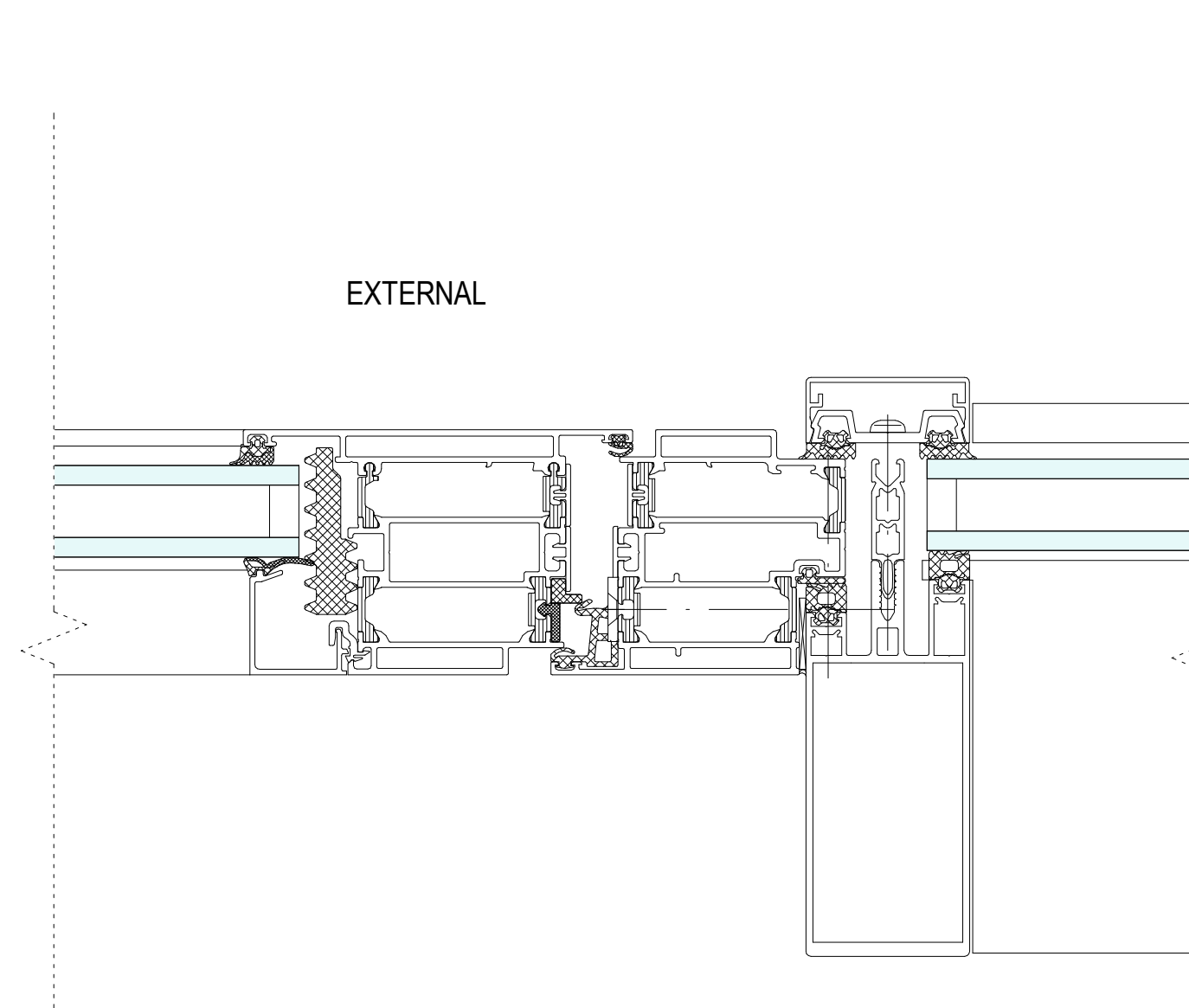
6
5332
Plan: Glazing Jamb Details (B)
1:2



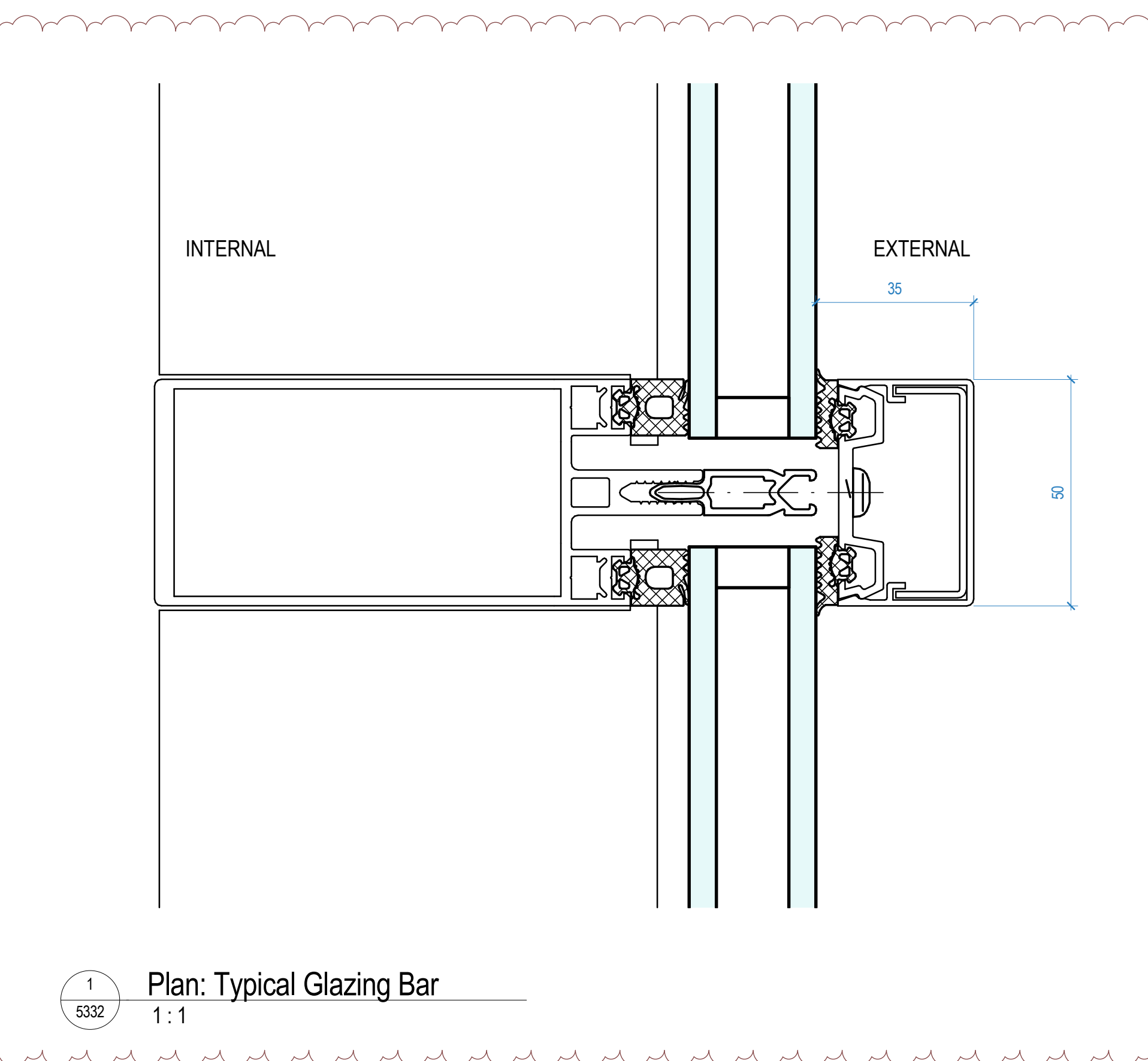
- New Solid Masonry Wall
25-10-55/150 Masonry External Leaf System type A
- Schüco Façade System FWS 50
- Proprietary Mullion Fixing
- Facing Mullion Clip; 20mm projection
Rounded, square-nosed profile
Powder Coat RAL7021
- 28mm Double Glazed Unit
(low E, argon filled)
Pilkington Optitherm™ S1 Plus
- Attachment Block
- New vertical DPC, 45-20-20/305 Bitumen based
damp proof courses and/ cavity trays
- Aluminium Mullion; 50mm profile
Rounded, square-nosed profile
Powder Coat RAL7021
- Closing Aluminium Jamb Plate;
Face fixed to Mullion, silicone seal to edge
Powder Coat RAL7021



5
5332
Plan: Door Jamb and Abutment Details (B)
1:2

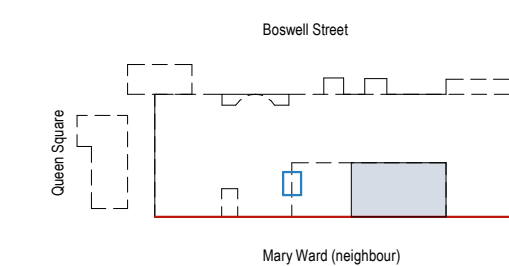


EXTERNAL



1
5332
Plan: Typical Glazing Bar
1:1

Key Plan

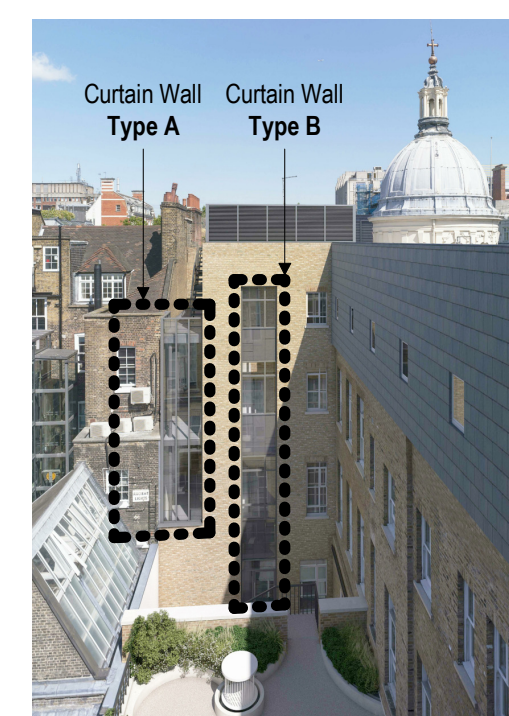


Key

- Existing party wall
- Proposed courtyard extension

Notes:

- Party wall side is inaccessible; to be developed with Kier/subcontractor with the view that a unitised solution may be adopted
- Refer to 5330, 5331, 5332, 5333, 5334 for curtain walling details
- Refer to specification 25-80-15 / 175
- Mullion depth to be confirmed following structural review of system and confirmation of (1)
- Glazing Specification to be confirmed by Curtain Walling supplier.
- Detailed drawings or samples of materials as appropriate, to be submitted to and approved in writing by the LPA (Condition 4.d) before work is begun.



Curtain Wall Type B
25-80-15/175 Type B

Rev	Date	Details/ Amended by	Sign
C2	15.02.19	Glazing bar added	LM
C1	30.07.18	First Construction Issue / MJF	LM
A12	25.06.18	REVISED STAGE 4 ISSUE / LM / MJF	LM
A7	07.02.18	STAGE 4 SUBMISSION/ LM	AML
P1	27.11.17	Draft Stage 4 Issue / JB	LM

Rev Date Details/ Amended by Sign

sonnemanntoon
architects

Quality House
6-9 Quality Court
Chancery Lane
London WC2A 1HP
United Kingdom

tel: +44 (0)20 7580 8881
email: info@st-arch.co.uk
web: www.st-arch.co.uk

© This drawing is copyright

Do not scale this drawing. Architect to be informed of all discrepancies in dimensions. Contractor to check all dimensions on site.

Project title
ITALIAN HOSPITAL

Drawing title
DETAILS: EXTERNAL ENVELOPE
Curtain Wall - Type B

Scale Status Revision
1:2 @A1 CONSTR. C2

Drawing number
1615-ST-Q1-ZZ-DR-A-5332

0 50 100 200mm