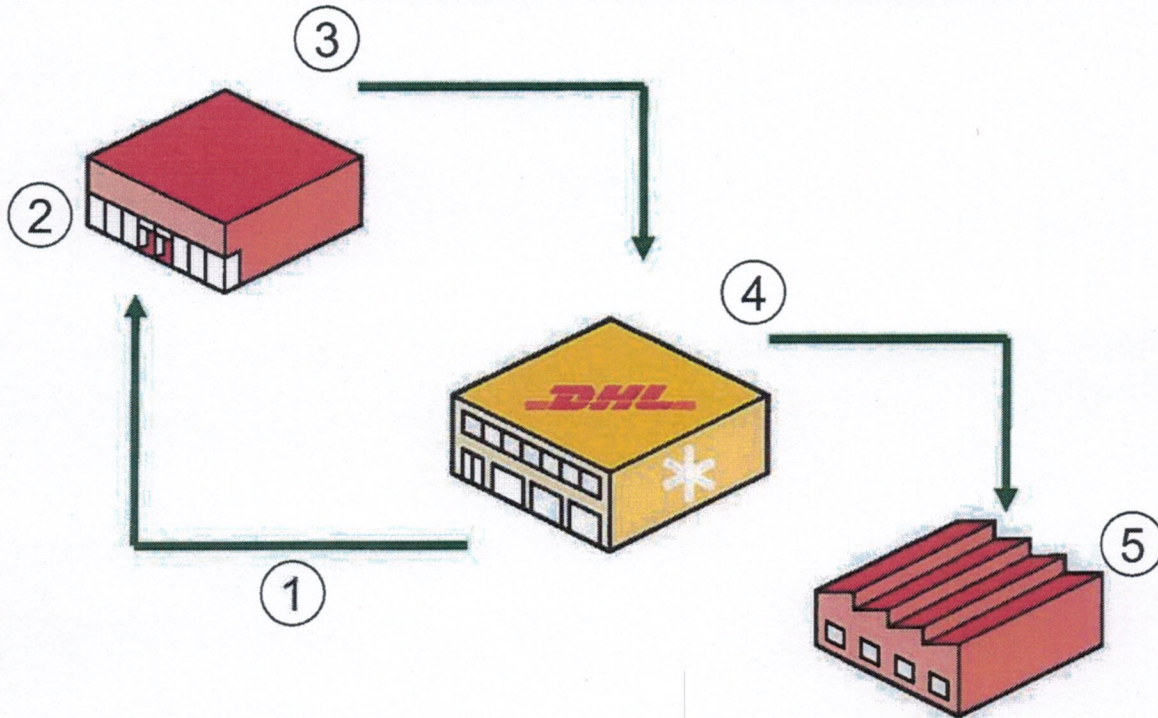


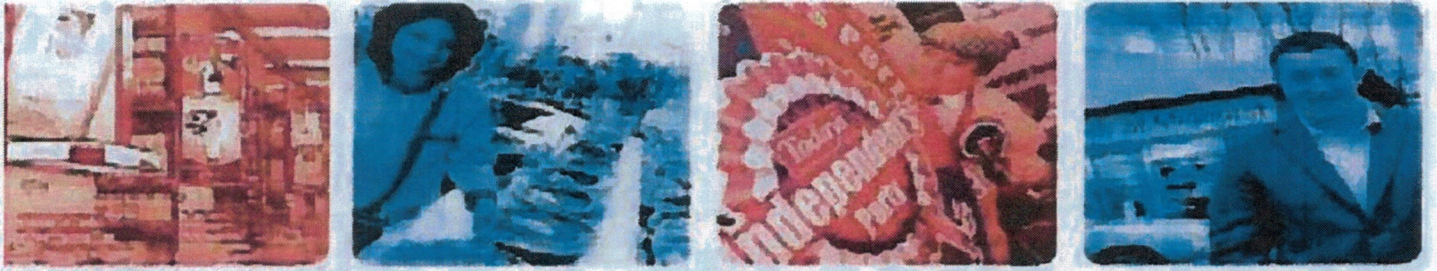


## What's the Process?



- ① Product delivered by Nisa/DHL to member store in cages
- ② Stores segregate cardboard & stretchwrap and stores in cage
- ③ DHL driver loads cages and returns material to Depot
- ④ Recyclable material baled and sent to Recycling Mill
- ⑤ Recycling Mill recycles material





# Nisa – Waste Recycling Scheme

The scheme has now been operating for nearly eighteen months, and now in excess of 1200 Members enjoy the benefit of simply returning flat pack card and clear shrinkwrap on the Nisa delivery vehicles. The scheme is open to all Nisa Members on the UK mainland or in Northern Ireland.

This member service initiative is **free of charge** and should represent a significant cost savings to those members taking part.

By taking part in the scheme you will benefit from **reductions in waste costs** through increasing the amount of recyclable material (Cardboard and Plastic) diverted through the distribution network away from landfill, as well as having the opportunity to become more **environmentally friendly**.

For further information please contact Member Support – [helpdesk@nisaretail.com](mailto:helpdesk@nisaretail.com)







# How to Segregate

## What CAN be put in the cage?

- 👍 Stretchwrap – loose
- 👍 Stretchwrap - baled
- 👍 Cardboard - loose
- 👍 Cardboard – baled

## What CAN'T be put in the cage?

- 👎 General waste
- 👎 Glass
- 👎 Plastic bottles
- 👎 Other packaging
- 👎 Food waste
- 👎 Metal
- 👎 Paper
- 👎 Food wrappings

## What should this look like?



Clear stretchwrap plastic

Flat-packed cardboard or bale



NB For safety reasons, any cage that has been contaminated with waste streams other than card and stretchwrap will not be removed by the driver

