

4755

3900

vintage external illumination to entrance

non illuminated solid timber 'plaque' with black laser cut metal projecting letters.

non illuminated red timber projecting bars fixed back to black painted steel sheet, fixed to original signage board behind. (demountable)

original sign board

fitted external retractable fabric sunshade canopy

exist. menu board

25

existing stallriser and glass shopfront in metal frame

existing glass door

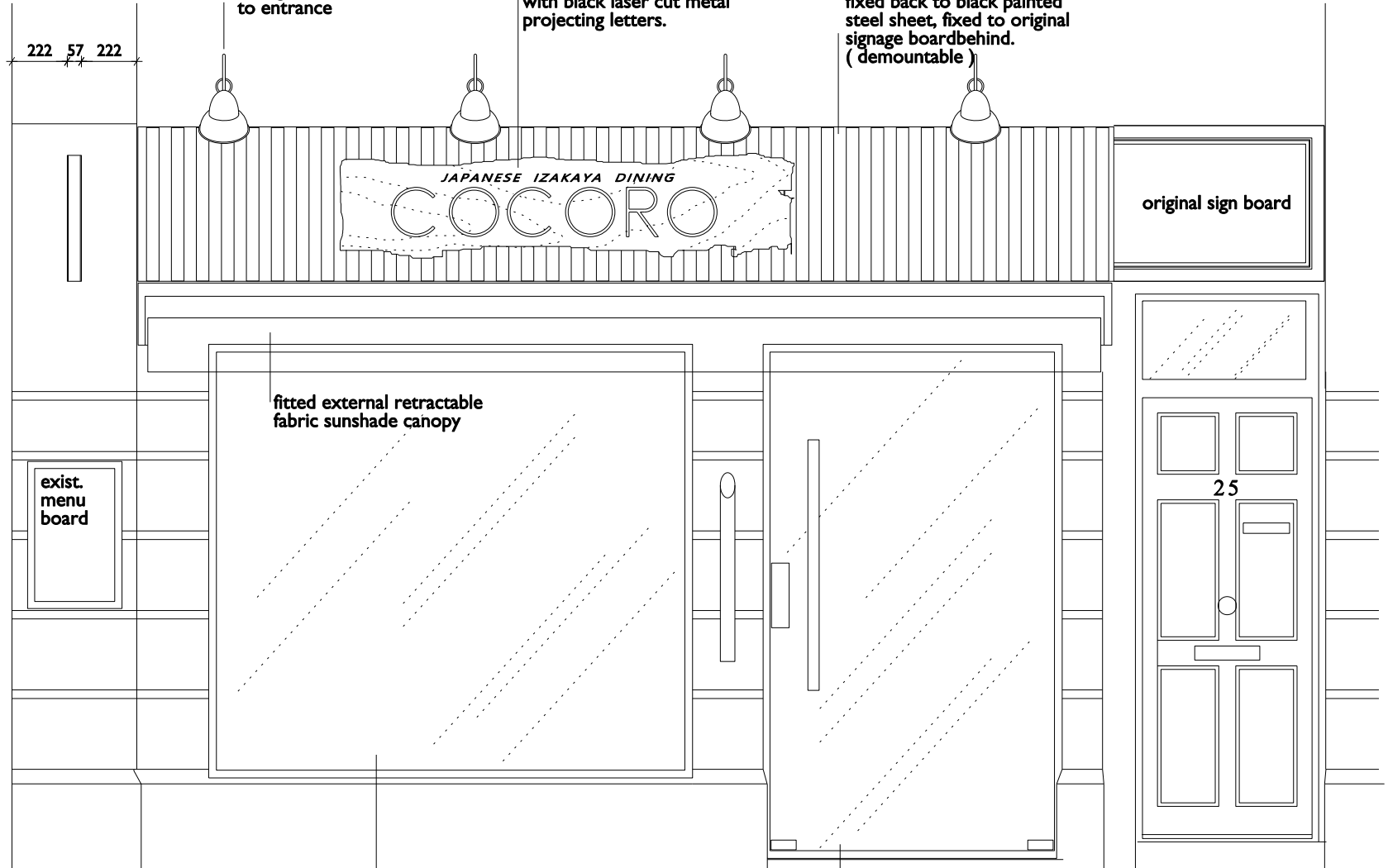
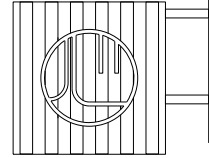
500 160
660

222 57 222

500

2357

non illuminated projecting sign red timber projecting bars fixed back to black painted steel sheet substrate with black metal framing and laser cut logo



Note: External lights to shine on pavement signage is not illuminated

GABOR GALLOV ARCHITECT

445b Hornsey Road
Unit 3 First Floor
N19 4QR
London
UK

E.gabor@gallovarchitct.com
www.gallovarchitct.com
tel. 0207 463 9078
mob. 07 857 831 362

25 Coptic Street sign

DRAWING:
proposed sign and projecting sign

REVISION: No. B 080-PE 01

SCALE: 1:25@A4
DATE: May 2019

