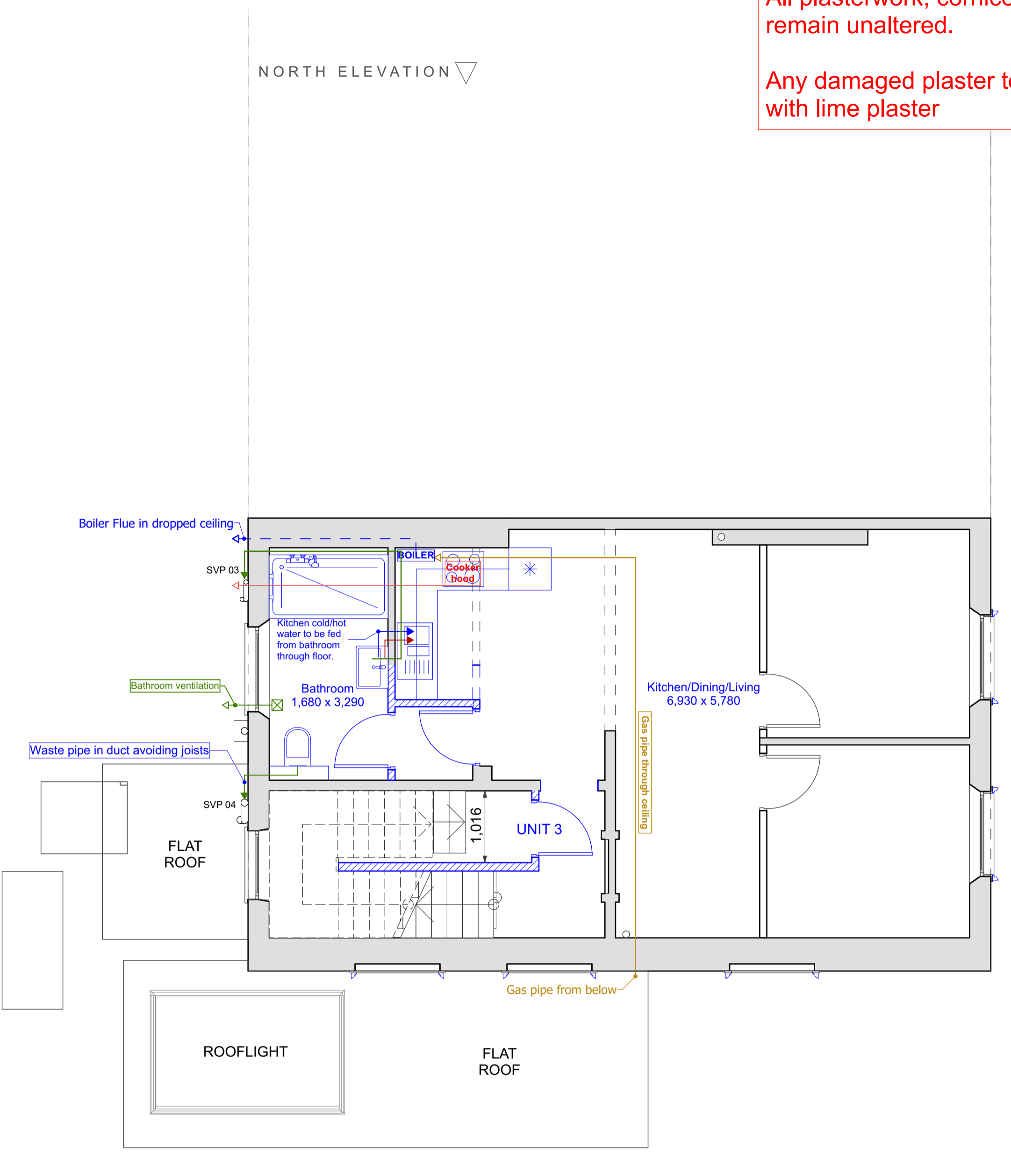
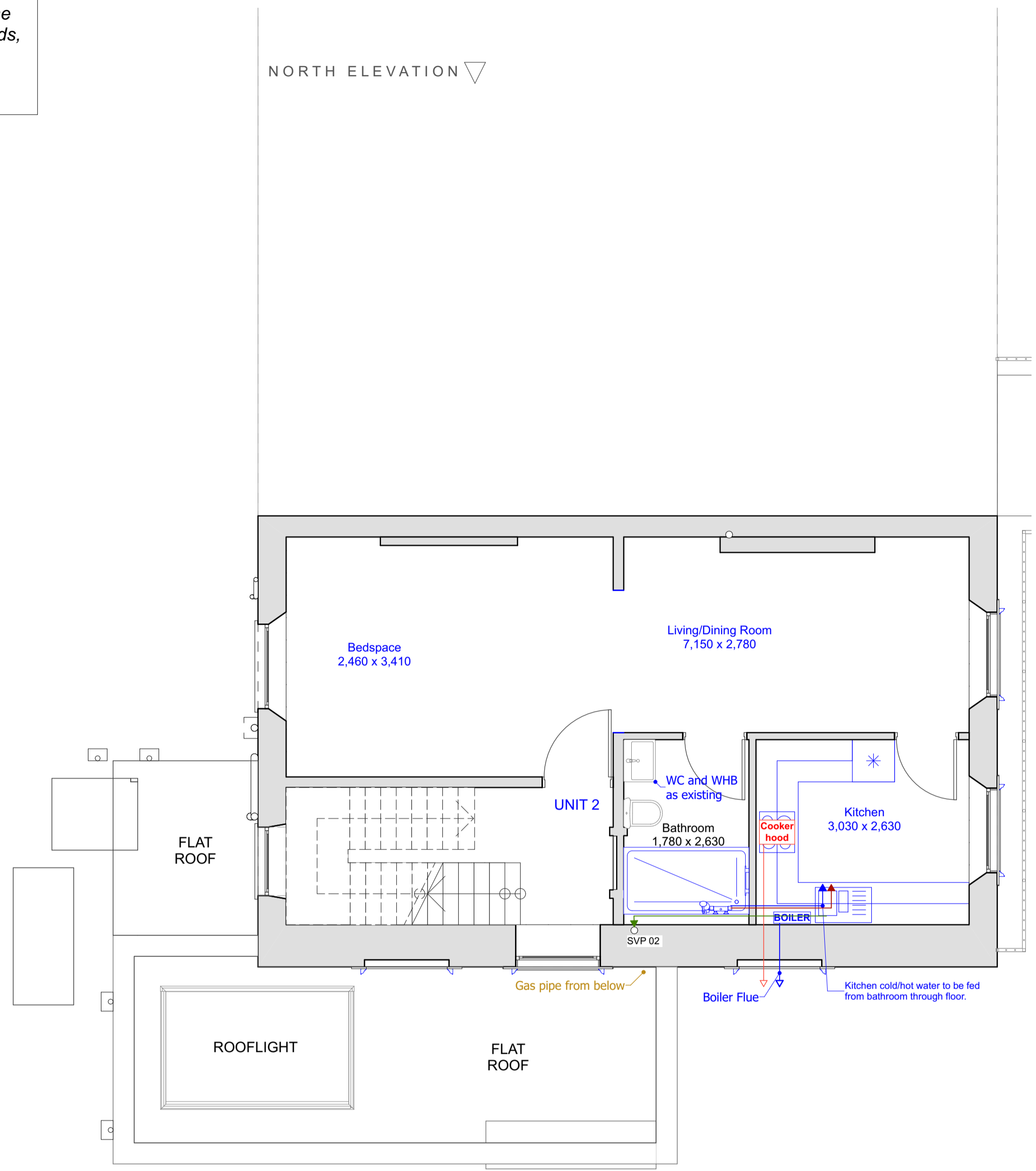


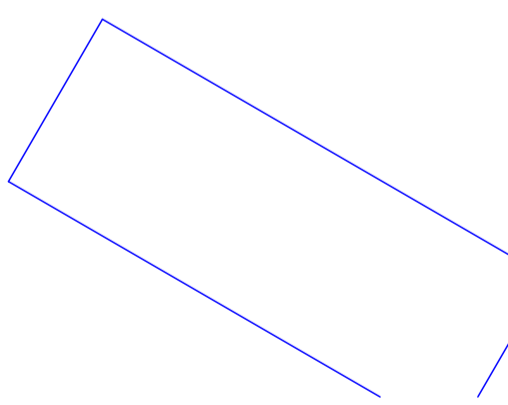
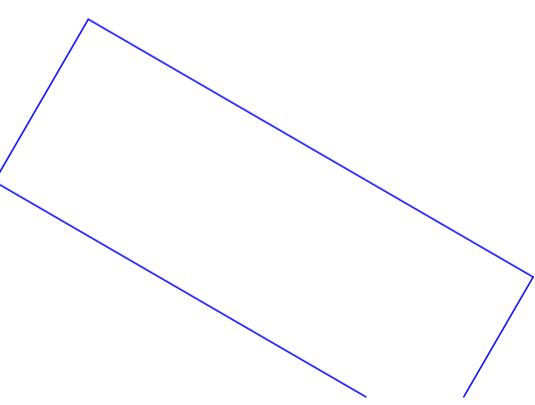
NOTE: ALL interior and exterior aspects, including the windows, the doors, internal surfaces, floorboards, plasterwork, dados, fireplaces, skirting boards, cornices are to remain unaltered

All plasterwork, cornices, etc, will remain unaltered.  
Any damaged plaster to be repaired with lime plaster



SOUTH ELEVATION

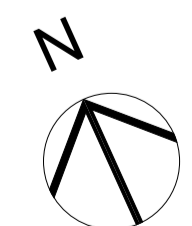
SOUTH ELEVATION



PROPOSED FIRST 1:50

PROPOSED SECOND 1:50

Looking to extend your home?  
Call for a free consultation today;  
020 8954 6291  
www.yooparchitects.co.uk  
YOOP Architects, your local architect



- Existing
- To be demolished
- New