

KEYPLAN

NOTES

- 1.00 ALL EXTERNAL LIGHTING TO BE CONTROLLED BY PHOTOCELL AND TIME CONTROL.
- 2.00 ALL EXTERNAL ELECTRICAL FIXTURES SHALL HAVE MINIMUM RATING OF IP65.
- 3.00 FOR DETAILS OF LUMINAIRES REFER TO THE SCHEDULE OF LUMINAIRE & LAMPS
- 4.00 THIS DRAWING IS TO BE READ IN CONJUNCTION WITH IN2 LIGHTING ELEVATION DRAWINGS L18051-IN2-00-XX-DR-E-0101 & L18051-IN2-00-XX-DR-E-0102

HIGH LEVEL REF 'X2' LUMINAIRE TO BE INSTALLED AT EXISTING POSITIONS.
LUMINAIRE TYPE REF 'X3' INSTALLED AT LOW LEVEL BELOW LUMINAIRE REF 'X2'.
REFER TO EXTERNAL ELEVATIONS DRAWING No. L18051-IN2-00-XX-DR-E-0101.

LOW LEVEL LUMINAIRE MOUNTED 700mm FROM THE GROUND.
REFER TO EXTERNAL ELEVATIONS DRAWING NO. L18051-IN2-00-XX-DR-E-0101.

LUMINAIRE ON THE BALCONY OF
GROUND AND FIRST FLOOR

LUMINAIRE ON THE COURTYARD

LAMBOLLE PLACE

ETON AVENUE

NOTE: ARCHITECTURAL DRAWING USED FOR COMPILATION OF IN2 DRAWING. ARCHITECTURAL DRAWING REVISION: DATE RECEIVED: 14.06.2019

STATUS	DATE	DESCRIPTION	DRN	ENG	APP	REV
S4	22.07.2019	CONSTRUCTION ISSUE	JDT	JW	BF	C1

IN2
ENGINEERING DESIGN PARTNERSHIP
DUBLIN . ATHLONE . BELFAST . LONDON



PROJECT
BELSIZE PARK FIRESTATION

CLIENT
PLATINUM LAND

DRAWING TITLE
ELECTRICAL SERVICES INSTALLATION
EXTERNAL LIGHTING LAYOUT
LIGHTING SERVICES LAYOUT

SCALE
1:100 @ A1
1:200 @ A3

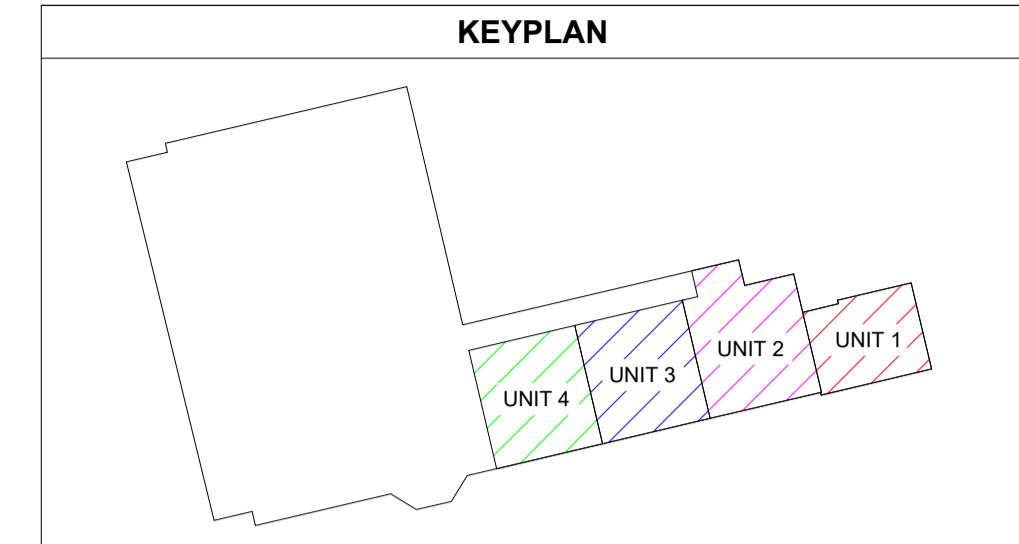
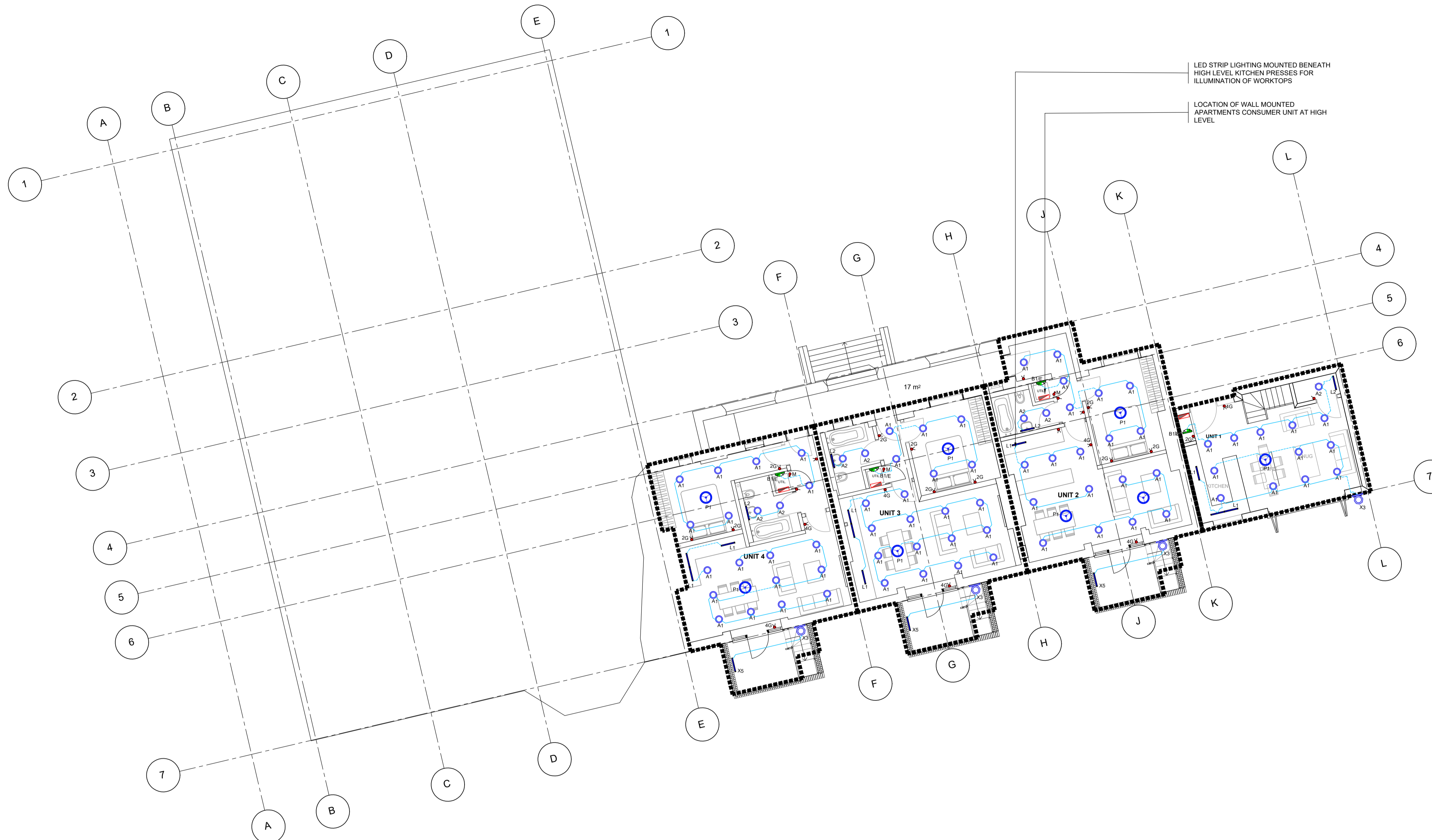
SIZE
A1

PROJECT REF:
L18051

DRAWING No.
L18051-IN2-00-00-DR-E-0101

STATUS
S4

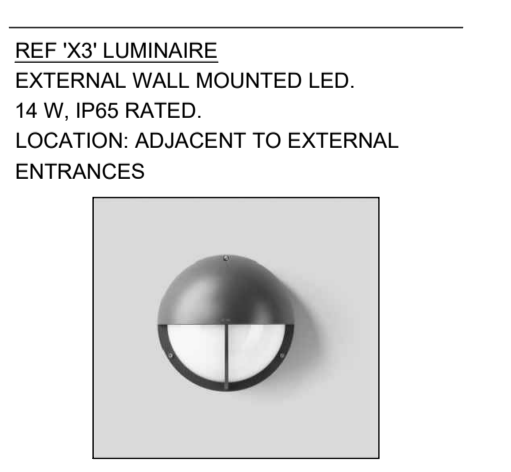
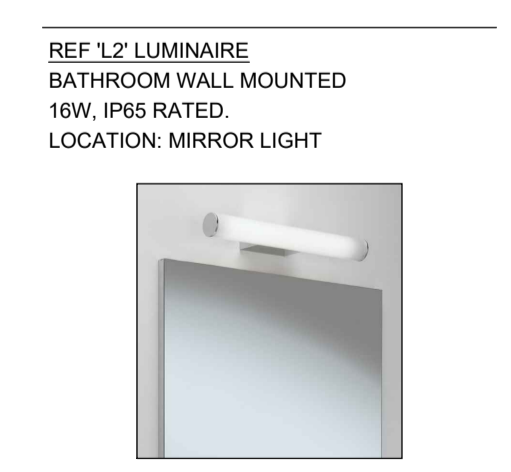
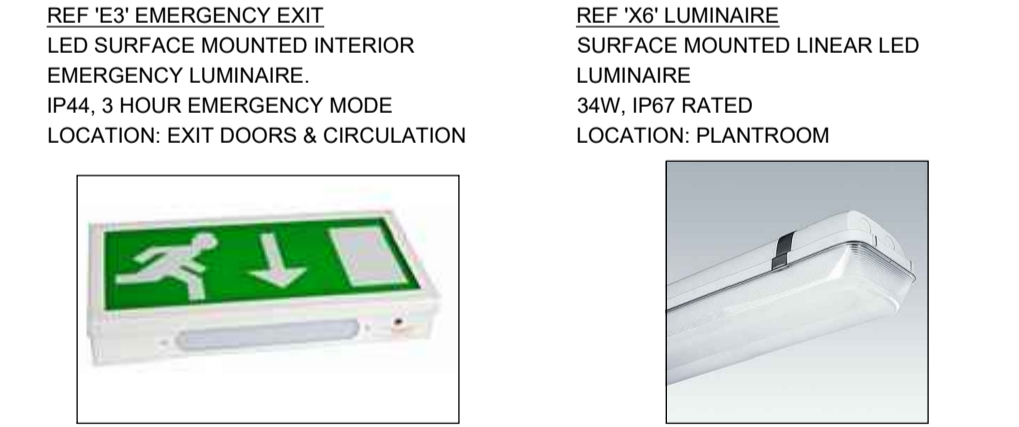
REVISION
C1



- LIGHTING SERVICES INSTALLATION NOTES**
- ALL LIGHTING CIRCUITS AND CABLING IN APARTMENTS TO BE 1.5mm² T&E IN STUD PARTITIONS AND WALL TO BE CONTAINED IN PVC CONDUIT.
 - CABLING FOR LIGHTING INSTALLATION IN ALL OTHER AREAS TO BE 2.5mm LSF SINGLES IN GALVANISED STEEL CONDUIT OR TRUNKING UNLESS OTHERWISE INDICATED.
 - EACH LUMINAIRE TO HAVE A DEDICATED "CLICK" TYPE CONNECTOR TO BE LOCATED NO MORE THAN 500mm FROM THE LUMINAIRE. THE CONNECTION BETWEEN THE "CLICK" & THE LUMINAIRE SHALL BE IN 1.5mm² PVC/LSOFH FLEX.
 - WHERE EXIT SIGNS ARE INDICATED WITH A GENERAL LIGHTING LUMINAIRE THE SIGN SHALL BE PROPRIETARY TO AND COMPLETELY INTEGRATED WITH THAT LUMINAIRE.
 - ALL LIGHTING IN CORRIDOR AREAS TO BE SWITCHED AND CONTROLLED BY THE LIGHTING / CONTROL MODULES. REFER TO IN2 Dwg. No. E1180 LIGHTING SCHEMATIC.
 - THE ELECTRICAL CONTRACTOR SHALL BE RESPONSIBLE FOR ENSURING THAT ALL LUMINAIRES SPECIFIED COME COMPLETE WITH PLASTER MOUNTING KITS, RECESSING BOXES, FIXING CLIPS, LAMPS AND DRIVERS.
 - LAYOUTS SUBJECT TO CHANGE (PARTICULARLY FURNITURE / P1 & P2 LOCATIONS)

SCHEDULE OF LIGHT SWITCHING

	LIGHTING CIRCUIT
	LIGHTING SUB-CIRCUIT (SEPARATE SWITCH)
	CAT 6 ELV LIGHTING CIRCUIT FOR GROUPED LED SOURCES
	0 - 10V CONTROL CABLE FLUORESCENT DIMMING CONTROL CIRCUIT
	FIRE RATED CIRCUIT FOR EMERGENCY LIGHTING
	DENOTES INDICATIVE ROUTE OF CAST IN-SITU CONDUIT
	LED EMERGENCY LUMINAIRES CW 3 HOUR EMERGENCY BATTERY BACKUP
	SINGLE 5A SWITCHED SOCKET OUTLET FOR USE WITH TASK LIGHTING
	1-GANG, 1 WAY WALL MOUNTED LIGHT SWITCH
	MOMENTARY / WARDROBE LIGHT SWITCHES
	WALL MOUNTED LIGHT SWITCH CW NEON INDICATOR
	2-GANG, 1 WAY WALL MOUNTED LIGHT SWITCH
	1-GANG, 2 WAY WALL MOUNTED LIGHT SWITCH
	2-GANG, 2 WAY WALL MOUNTED LIGHT SWITCH
	INTERMEDIATE 1 WAY WALL MOUNTED LIGHT SWITCH
	1-GANG, 1 WAY EXTERNAL WALL MOUNTED LIGHT SWITCH
	1-GANG, 2 WAY EXTERNAL WALL MOUNTED LIGHT SWITCH
	WALL MOUNTED SINGLE SCENE LIGHTING CONTROL SWITCH
	WALL MOUNTED MULTI SCENE LIGHTING CONTROL SWITCH
	CEILING MOUNTED 360° LIGHTING PASSIVE INFRA RED MULTI-SENSOR



NOTE: ARCHITECTURAL DRAWING USED FOR COMPILATION OF IN2 DRAWING. ARCHITECTURAL DRAWING REVISION: DATE RECEIVED: 14.06.2019

STATUS	DATE	DESCRIPTION	DRN	ENG	APP	REV
S4	18.06.2019	CONSTRUCTION ISSUE	JDT	TH	BF	C2
S4	18.10.2018	CONSTRUCTION ISSUE	KO	TH	BF	C1

IN2
ENGINEERING DESIGN PARTNERSHIP
DUBLIN . ATHLONE . BELFAST . LONDON

PROJECT
BELSIZE PARK FIRESTATION

CLIENT
PLATINUM LAND

DRAWING TITLE
**ELECTRICAL SERVICES INSTALLATION
BASEMENT LEVEL 1
LIGHTING SERVICES LAYOUT**

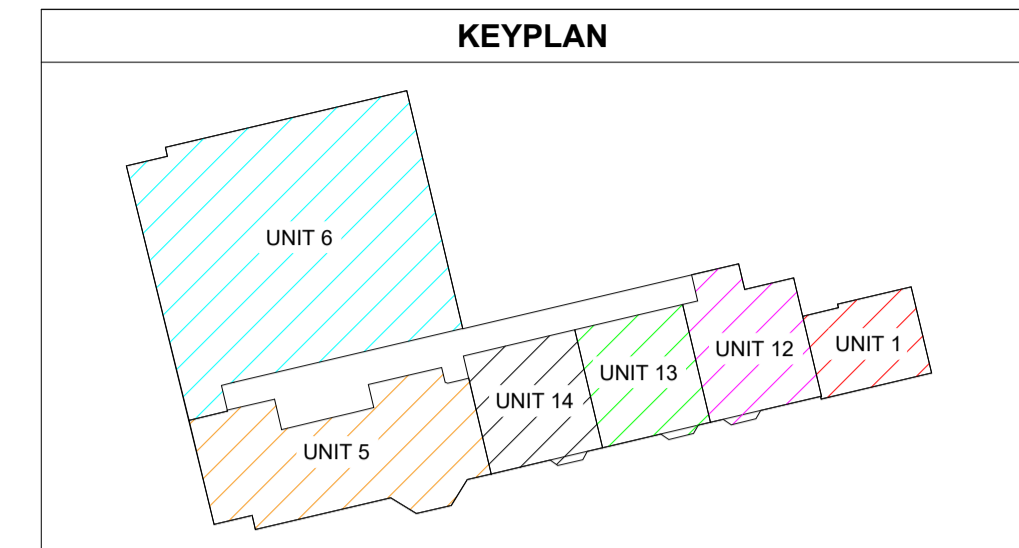
SCALE
1:100 @ A1
1:200 @ A3

PROJECT REF: **L18051**

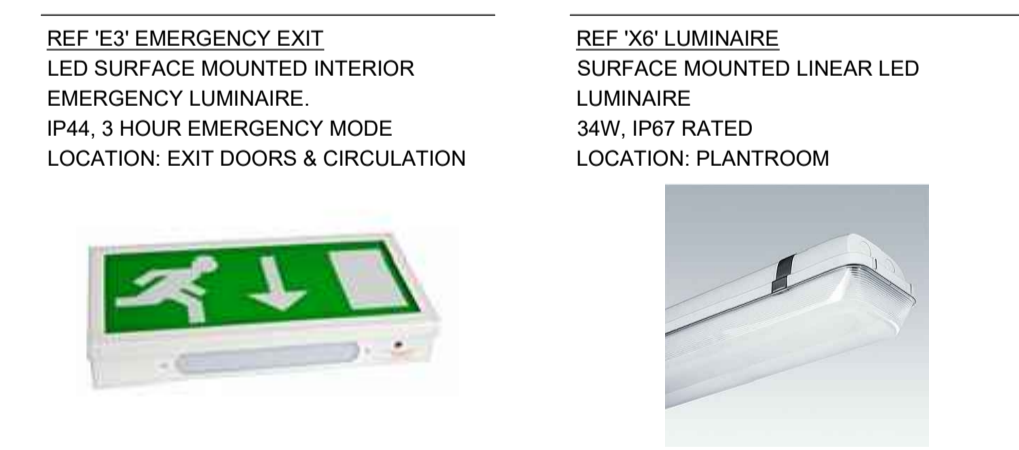
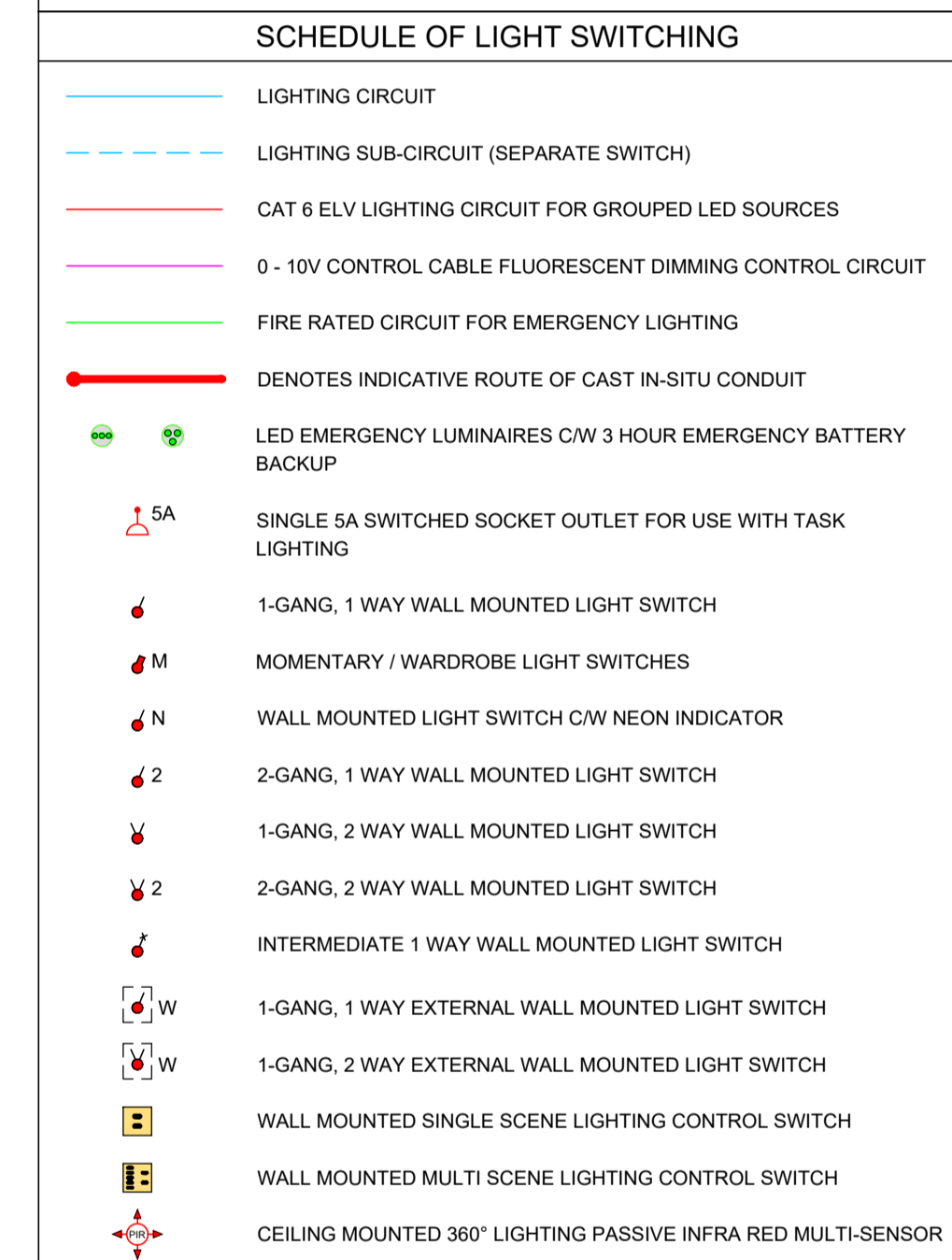
DRAWING No.
L18051-IN2-00-B1-DR-E-1001

STATUS
S4

REVISION
C2



- LIGHTING SERVICES INSTALLATION NOTES**
- ALL LIGHTING CIRCUITS AND CABLING IN APARTMENTS TO BE 1.5mm² T&E IN STUD PARTITIONS AND WALL TO BE CONTAINED IN PVC CONDUIT.
 - CABLING FOR LIGHTING INSTALLATION IN ALL OTHER AREAS TO BE 2.5mm LSF SINGLES IN GALVANISED STEEL CONDUIT OR TRUNKING UNLESS OTHERWISE INDICATED.
 - EACH LUMINAIRE TO HAVE A DEDICATED "CLICK" TYPE CONNECTOR TO BE LOCATED NO MORE THAN 500mm FROM THE LUMINAIRE. THE CONNECTION BETWEEN THE "CLICK" & THE LUMINAIRE SHALL BE IN 1.5mm² PVC/LSOH FLEX.
 - WHERE EXIT SIGNS ARE INDICATED WITH A GENERAL LIGHTING LUMINAIRE THE SIGN SHALL BE PROPRIETARY TO AND COMPLETELY INTEGRATED WITH THAT LUMINAIRE.
 - ALL LIGHTING IN CORRIDOR AREAS TO BE SWITCHED AND CONTROLLED BY THE LIGHTING / CONTROL MODULES. REFER TO IN2 Dtg. No. E1180 LIGHTING SCHEMATIC.
 - THE ELECTRICAL CONTRACTOR SHALL BE RESPONSIBLE FOR ENSURING THAT ALL LUMINAIRES SPECIFIED COME COMPLETE WITH PLASTER MOUNTING KITS, RECESSING BOXES, FIXING CLIPS, LAMPS AND DRIVERS.
 - LAYOUTS SUBJECT TO CHANGE (PARTICULARLY FURNITURE / P1 & P2 LOCATIONS)



<p>REF 'A1' LUMINAIRE CEILING RECESSED LED DOWNLIGHT. 7.6 W, 500lm-3000lm, 2700K-4000K, CR180+. 80mm (W) x 81mm (D) OPTIONAL: 3HR MAINTAINED EMERGENCY BACK UP, DIMMING CONTROL, DALI. LOCATION: CIRCULATION</p> 	<p>REF 'A2' LUMINAIRE CEILING RECESSED IP65 LED DOWNLIGHT. 7.6 W, 500lm-3000lm, 2700K-4000K, CR180+. 80mm (W) x 81mm (D) LOCATION: BATHROOMS & W/C'S</p> 	<p>REF 'B1'E' LUMINAIRE WALL MOUNTED IP65 LED. 15 W, 454lm. 300mm (W) x 180mm (H) x 140mm (D)</p> 	<p>REF 'C1' LUMINAIRE SHIELDED WALL LUMINAIRE. 5.6W, 470lm. 170mm x 80mm x 110mm</p> 	<p>REF 'L1' LUMINAIRE RECESSED LINEAR LED STRIP KITCHEN: IP65 BATHROOM: IP20 WATTS VARY ON LENGTH. OPTIONAL: IP RATING, CASING TYPES. LOCATION: APARTMENT FURNITURE</p> 	<p>REF 'L2' LUMINAIRE BATHROOM WALL MOUNTED 16W, IP65 RATED. LOCATION: MIRROR LIGHT</p> 	<p>REF 'P1' LUMINAIRE FIXED LED PENDANT. 9/10 W, 500lm-700lm, 2700K, CR190. OPTIONAL: DIMMING CONTROL, CORD LENGTH, GLASS COLOUR, RETROFIT LED. LOCATION: APARTMENT DINING AREA</p> 	<p>REF 'P2' LUMINAIRE FIXED INDUSTRIAL LIGHTS SALVAGED FROM TRAIN WORKSHOP. Ø400mm, 620mm (H) LOCATION: COMMUNAL STAIRCASE, UNIT 8 & UNIT 8</p> 	<p>REF 'X3' LUMINAIRE EXTERNAL WALL MOUNTED LED. 14 W, IP65 RATED. LOCATION: ADJACENT TO EXTERNAL ENTRANCES</p> 	<p>REF 'X5' LUMINAIRE WALL RECESSED LED 6W, IP67 RATED LOCATION: BRICK LIGHT</p> 
--	--	--	--	---	---	---	---	---	--

NOTE: ARCHITECTURAL DRAWING USED FOR COMPILATION OF IN2 DRAWING. ARCHITECTURAL DRAWING REVISION: DATE RECEIVED: 14.06.2019

STATUS	DATE	DESCRIPTION	DRN	ENG	APP	REV
S4	18.06.2019	CONSTRUCTION ISSUE	JDT	TH	BF	C2
S4	18.10.2018	CONSTRUCTION ISSUE	KO	TH	BF	C1

IN2
ENGINEERING DESIGN PARTNERSHIP
DUBLIN . ATHLONE . BELFAST . LONDON

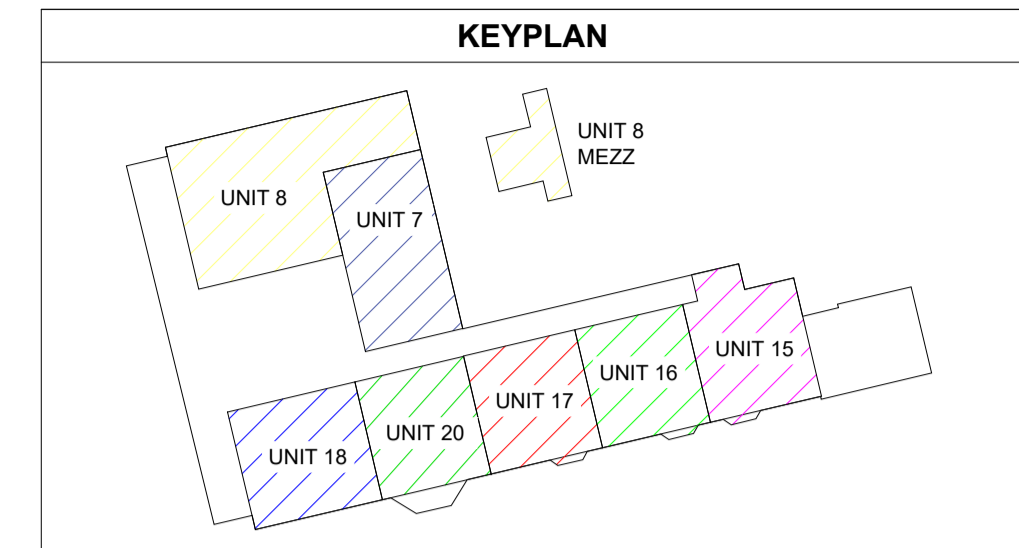
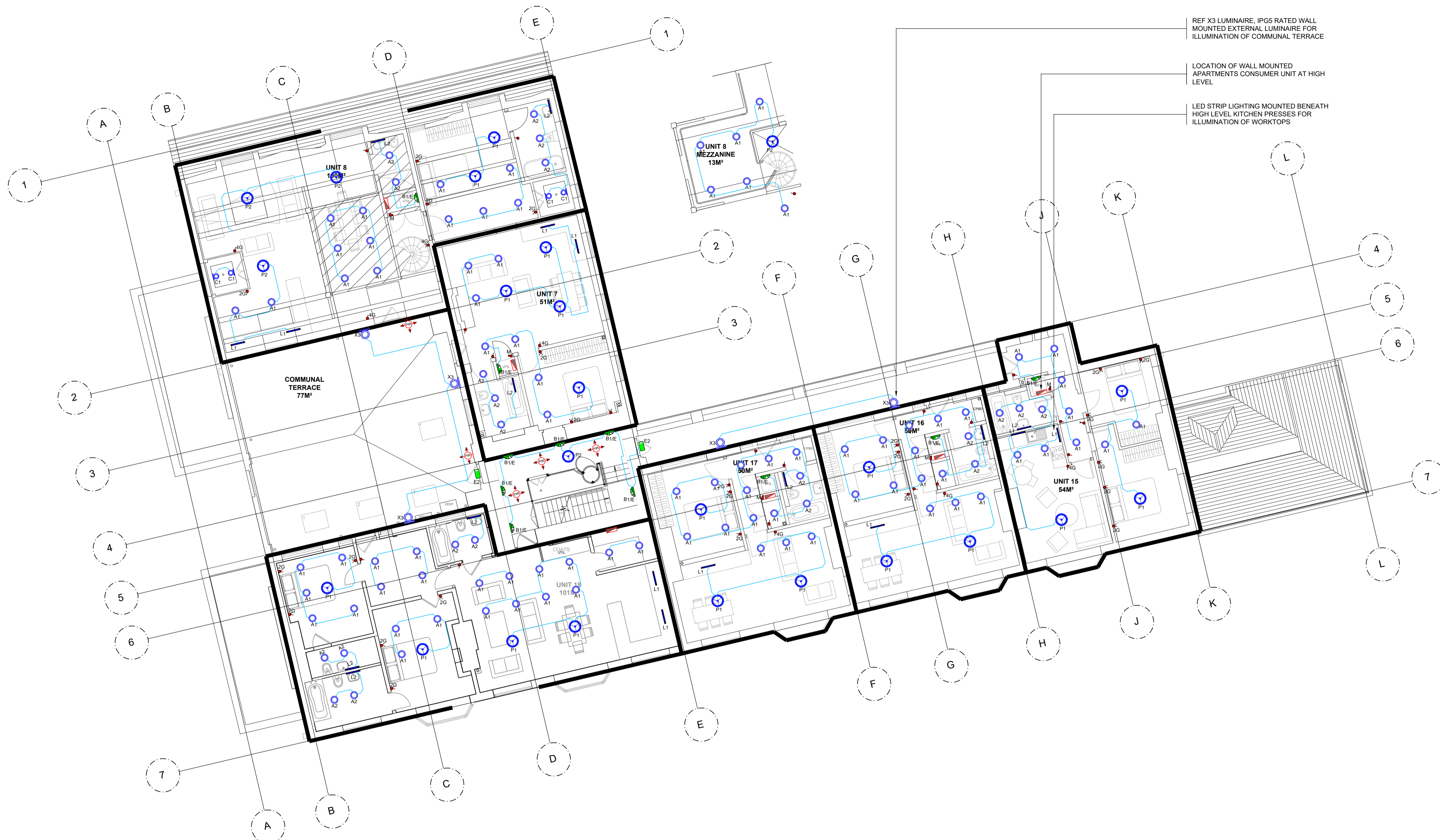



PROJECT
BELSIZE PARK FIRESTATION

CLIENT
PLATINUM LAND

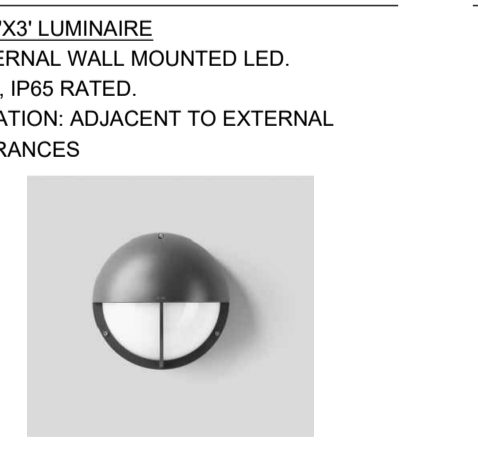
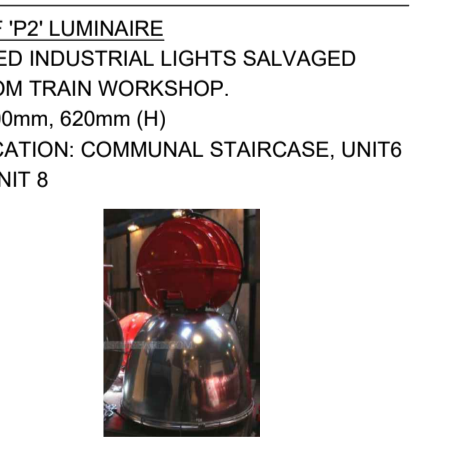
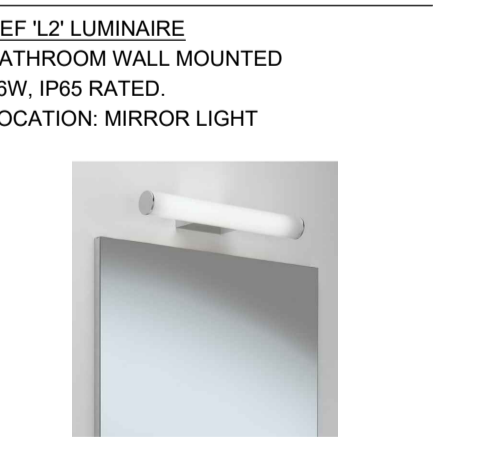
DRAWING TITLE ELECTRICAL SERVICES INSTALLATION GROUND FLOOR LEVEL LIGHTING SERVICES LAYOUT		STATUS S4
SCALE 1:100 @ A1 1:200 @ A3	PROJECT REF: A1 L18051	DRAWING No. L18051-IN2-00-00-DR-E-1001
REVISION C2		

THIS DRAWING IS THE PROPERTY OF IN2 ENGINEERING DESIGN PARTNERSHIP & SHALL NOT BE USED, REPRODUCED OR DISCLOSED TO ANYONE WITHOUT PRIOR WRITTEN PERMISSION OF IN2 ENGINEERING DESIGN PARTNERSHIP & SHALL BE RETURNED UPON REQUEST.



- LIGHTING SERVICES INSTALLATION NOTES**
- ALL LIGHTING CIRCUITS AND CABLING IN APARTMENTS TO BE 1.5mm² T&E IN STUD PARTITIONS AND WALL TO BE CONTAINED IN PVC CONDUIT.
 - CABLING FOR LIGHTING INSTALLATION IN ALL OTHER AREAS TO BE 2.5mm² LSF SINGLES IN GALVANISED STEEL CONDUIT OR TRUNKING UNLESS OTHERWISE INDICATED.
 - EACH LUMINAIRE TO HAVE A DEDICATED "CLICK" TYPE CONNECTOR TO BE LOCATED NO MORE THAN 500mm FROM THE LUMINAIRE. THE CONNECTION BETWEEN THE "CLICK" & THE LUMINAIRE SHALL BE IN 1.5mm² PVC/LSOH FLEX.
 - WHERE EXIT SIGNS ARE INDICATED WITH A GENERAL LIGHTING LUMINAIRE THE SIGN SHALL BE PROPRIETARY TO AND COMPLETELY INTEGRATED WITH THAT LUMINAIRE.
 - ALL LIGHTING IN CORRIDOR AREAS TO BE SWITCHED AND CONTROLLED BY THE LIGHTING / CONTROL MODULES. REFER TO IN2 Dwg No. E1180 LIGHTING SCHEMATIC.
 - THE ELECTRICAL CONTRACTOR SHALL BE RESPONSIBLE FOR ENSURING THAT ALL LUMINAIRES SPECIFIED COME COMPLETE WITH PLASTER MOUNTING KITS, RECESSING BOXES, FIXING CLIPS, LAMPS AND DRIVERS.
 - LAYOUTS SUBJECT TO CHANGE (PARTICULARLY FURNITURE / P1 & P2 LOCATIONS)

- SCHEDULE OF LIGHT SWITCHING**
- LIGHTING CIRCUIT
 - LIGHTING SUB-CIRCUIT (SEPARATE SWITCH)
 - CAT 6 ELV LIGHTING CIRCUIT FOR GROUPED LED SOURCES
 - 0 - 10V CONTROL CABLE FLUORESCENT DIMMING CONTROL CIRCUIT
 - FIRE RATED CIRCUIT FOR EMERGENCY LIGHTING
 - DENOTES INDICATIVE ROUTE OF CAST IN-SITU CONDUIT
 - LED EMERGENCY LUMINAIRES CW 3 HOUR EMERGENCY BATTERY BACKUP
 - 5A SINGLE 5A SWITCHED SOCKET OUTLET FOR USE WITH TASK LIGHTING
 - 1-GANG, 1 WAY WALL MOUNTED LIGHT SWITCH
 - M MOMENTARY / WARDROBE LIGHT SWITCHES
 - N WALL MOUNTED LIGHT SWITCH CW NEON INDICATOR
 - 2 2-GANG, 1 WAY WALL MOUNTED LIGHT SWITCH
 - 1-GANG, 2 WAY WALL MOUNTED LIGHT SWITCH
 - 2 2-GANG, 2 WAY WALL MOUNTED LIGHT SWITCH
 - INTERMEDIATE 1 WAY WALL MOUNTED LIGHT SWITCH
 - W 1-GANG, 1 WAY EXTERNAL WALL MOUNTED LIGHT SWITCH
 - W 1-GANG, 2 WAY EXTERNAL WALL MOUNTED LIGHT SWITCH
 - W WALL MOUNTED SINGLE SCENE LIGHTING CONTROL SWITCH
 - W WALL MOUNTED MULTI SCENE LIGHTING CONTROL SWITCH
 - CEILING MOUNTED 360° LIGHTING PASSIVE INFRA RED MULTI-SENSOR



NOTE: ARCHITECTURAL DRAWING USED FOR COMPILATION OF IN2 DRAWING. ARCHITECTURAL DRAWING REVISION: DATE RECEIVED: 14.06.2019

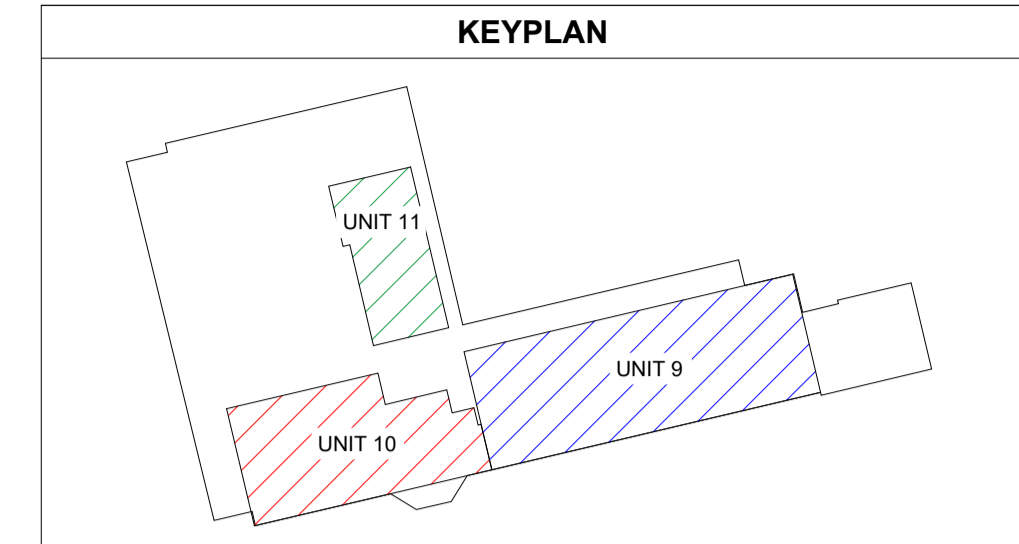
STATUS	DATE	DESCRIPTION	DRN	ENG	APP	REV
S4	18.06.2019	CONSTRUCTION ISSUE	JDT	TH	BF	C2
S4	18.10.2018	CONSTRUCTION ISSUE	KO	TH	BF	C1

IN2
ENGINEERING DESIGN PARTNERSHIP
DUBLIN . ATHLONE . BELFAST . LONDON

PROJECT
BELSIZE PARK FIRESTATION

CLIENT
PLATINUM LAND

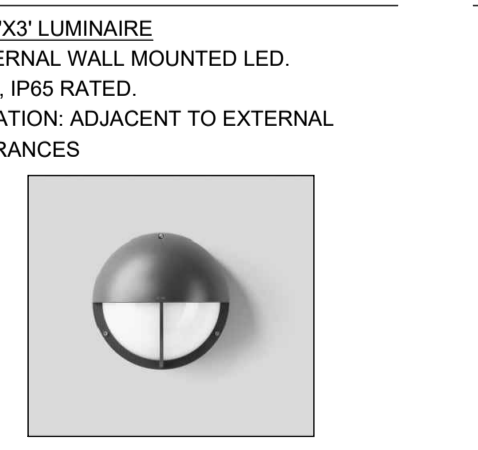
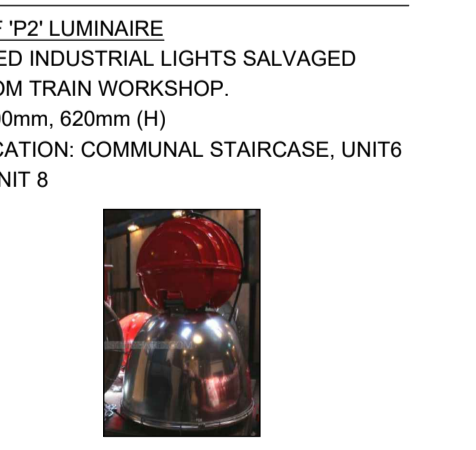
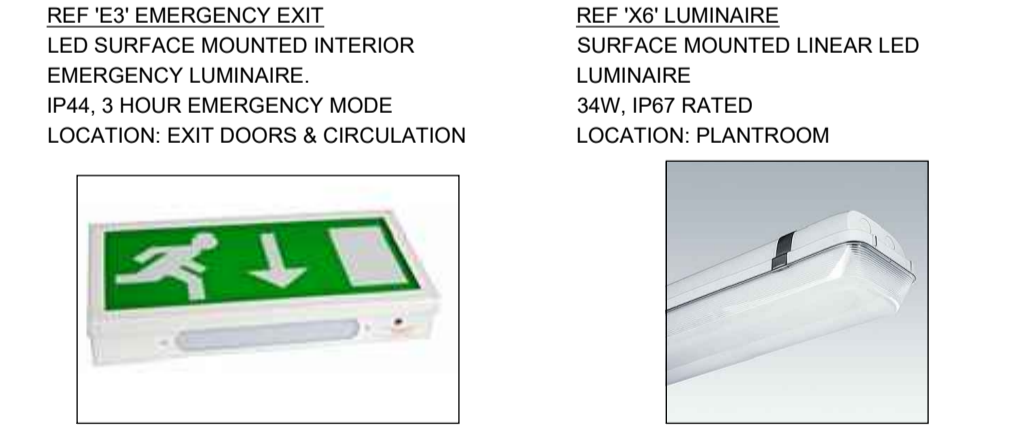
SCALE	SIZE	PROJECT REF:	DRAWING No.	STATUS
1:100 @ A1 1:200 @ A3	A1	L18051	L18051-IN2-00-01-DR-E-1001	S4
DRAWING TITLE ELECTRICAL SERVICES INSTALLATION FIRST FLOOR LEVEL LIGHTING SERVICES LAYOUT				REVISION C2



- LIGHTING SERVICES INSTALLATION NOTES**
- ALL LIGHTING CIRCUITS AND CABLING IN APARTMENTS TO BE 1.5mm² T&E IN STUD PARTITIONS AND WALL TO BE CONTAINED IN PVC CONDUIT.
 - CABLING FOR LIGHTING INSTALLATION IN ALL OTHER AREAS TO BE 2.5mm LSF SINGLES IN GALVANISED STEEL CONDUIT OR TRUNKING UNLESS OTHERWISE INDICATED.
 - EACH LUMINAIRE TO HAVE A DEDICATED "CLICK" TYPE CONNECTOR TO BE LOCATED NO MORE THAN 500mm FROM THE LUMINAIRE. THE CONNECTION BETWEEN THE "CLICK" & THE LUMINAIRE SHALL BE IN 1.5mm² PVC/LSOH FLEX.
 - WHERE EXIT SIGNS ARE INDICATED WITH A GENERAL LIGHTING LUMINAIRE THE SIGN SHALL BE PROPRIETARY TO AND COMPLETELY INTEGRATED WITH THAT LUMINAIRE.
 - ALL LIGHTING IN CORRIDOR AREAS TO BE SWITCHED AND CONTROLLED BY THE LIGHTING / CONTROL MODULES. REFER TO IN2 Dwg No. E1180 LIGHTING SCHEMATIC.
 - THE ELECTRICAL CONTRACTOR SHALL BE RESPONSIBLE FOR ENSURING THAT ALL LUMINAIRES SPECIFIED COME COMPLETE WITH PLASTER MOUNTING KITS, RECESSING BOXES, FIXING CLIPS, LAMPS AND DRIVERS.
 - LAYOUTS SUBJECT TO CHANGE (PARTICULARLY FURNITURE / P1 & P2 LOCATIONS)

SCHEDULE OF LIGHT SWITCHING

	LIGHTING CIRCUIT
	LIGHTING SUB-CIRCUIT (SEPARATE SWITCH)
	CAT 6 ELV LIGHTING CIRCUIT FOR GROUPED LED SOURCES
	0 - 10V CONTROL CABLE FLUORESCENT DIMMING CONTROL CIRCUIT
	FIRE RATED CIRCUIT FOR EMERGENCY LIGHTING
	DENOTES INDICATIVE ROUTE OF CAST IN-SITU CONDUIT
	LED EMERGENCY LUMINAIRES CW 3 HOUR EMERGENCY BATTERY BACKUP
	SINGLE 5A SWITCHED SOCKET OUTLET FOR USE WITH TASK LIGHTING
	1-GANG, 1 WAY WALL MOUNTED LIGHT SWITCH
	MOMENTARY / WARDROBE LIGHT SWITCHES
	WALL MOUNTED LIGHT SWITCH CW NEON INDICATOR
	2-GANG, 1 WAY WALL MOUNTED LIGHT SWITCH
	1-GANG, 2 WAY WALL MOUNTED LIGHT SWITCH
	2-GANG, 2 WAY WALL MOUNTED LIGHT SWITCH
	INTERMEDIATE 1 WAY WALL MOUNTED LIGHT SWITCH
	1-GANG, 1 WAY EXTERNAL WALL MOUNTED LIGHT SWITCH
	1-GANG, 2 WAY EXTERNAL WALL MOUNTED LIGHT SWITCH
	WALL MOUNTED SINGLE SCENE LIGHTING CONTROL SWITCH
	WALL MOUNTED MULTI SCENE LIGHTING CONTROL SWITCH
	CEILING MOUNTED 360° LIGHTING PASSIVE INFRA RED MULTI-SENSOR



NOTE: ARCHITECTURAL DRAWING USED FOR COMPILATION OF IN2 DRAWING. ARCHITECTURAL DRAWING REVISION: DATE RECEIVED: 14.06.2019

STATUS	DATE	DESCRIPTION	DRN	ENG	APP	REV
S4	18.06.2019	CONSTRUCTION ISSUE	JDT	TH	BF	C2
S4	18.10.2018	CONSTRUCTION ISSUE	KO	TH	BF	C1

IN2
ENGINEERING DESIGN PARTNERSHIP
DUBLIN . ATHLONE . BELFAST . LONDON

PROJECT
BELSIZE PARK FIRESTATION

CLIENT
PLATINUM LAND

DRAWING TITLE		STATUS	
ELECTRICAL SERVICES INSTALLATION		S4	
SECOND FLOOR LEVEL			
LIGHTING SERVICES LAYOUT			
SCALE	SIZE	PROJECT REF:	DRAWING No.
1:100 @ A1	A1	L18051	L18051-IN2-00-02-DR-E-1001
1:200 @ A3			
			REVISION
			C2

THIS DRAWING IS THE PROPERTY OF IN2 ENGINEERING DESIGN PARTNERSHIP & SHALL NOT BE USED, REPRODUCED OR DISCLOSED TO ANYONE WITHOUT PRIOR WRITTEN PERMISSION OF IN2 ENGINEERING DESIGN PARTNERSHIP & SHALL BE RETURNED UPON REQUEST.