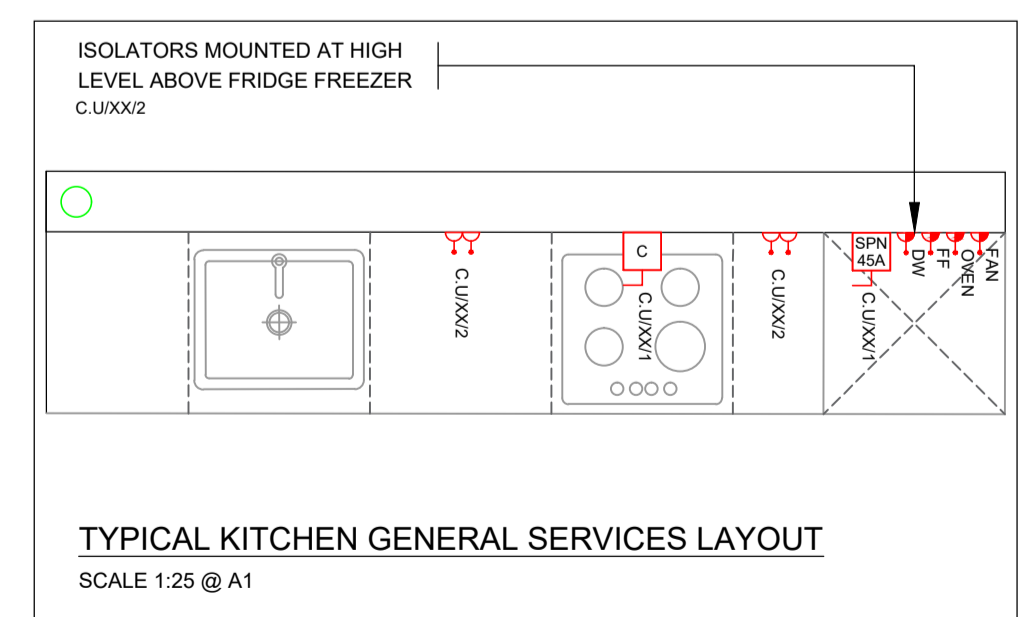
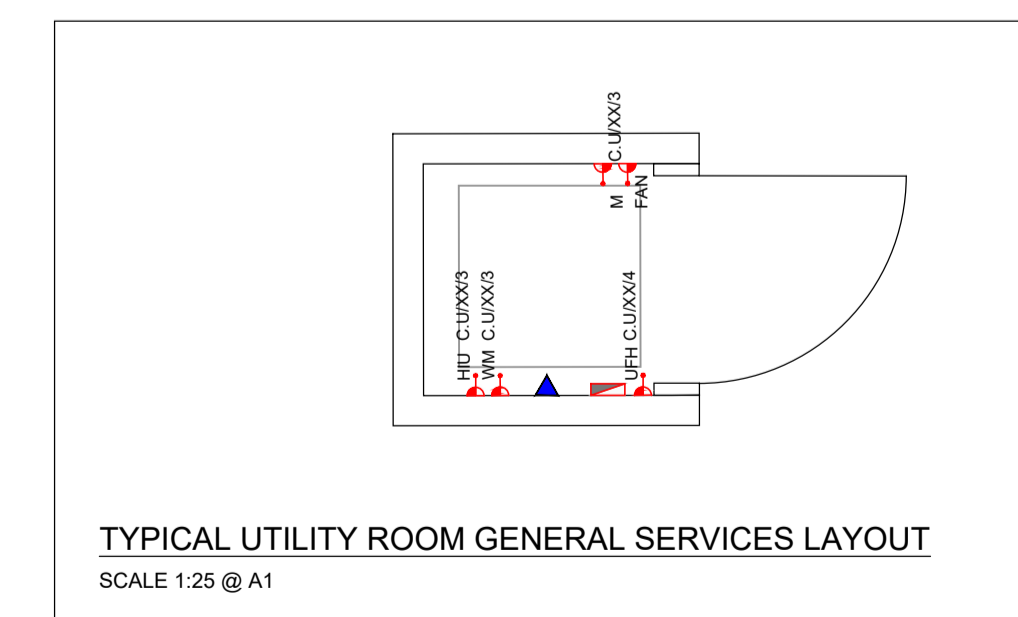


- NOTES
- 1.00 THE COMPLETE INSTALLATION SHALL BE IN ACCORDANCE WITH BEST PRACTICE & THE CURRENT ELECTRICITY AT WORK REGULATIONS AND ELECTRICAL INSTALLATIONS 17TH EDITION WIRING REGULATIONS BS7671:2008+A3:2015
 - 2.00 GENERAL POWER CABLING IN APARTMENTS TO BE WIRED IN 3x2.5mm² T+E CABLING CLIPPED TO THE BUILDING FABRIC.
 - 3.00 ALL POWER CABLING WITHIN DRYLINED WALLS OR PARTITIONS TO BE CONTAINED IN HIGH IMPACT PVC CONDUIT. ALL BACK BOXES IN PARTITION WALLS TO BE PROVIDED WITH HILTY PUTTY PAD FOR ACOUSTIC ISOLATION.
 - 4.00 THE GENERAL POWER CABLE INSTALLATIONS IN PLANT ROOM AREAS TO BE WIRED IN SINGLE CORE LSF CABLES CONTAINED IN GALVANISED STEEL CONDUIT AND TRUNKING.
 - 5.00 WIRING TO ALL 13A SOCKET IN CORRIDORS AND GENERAL CIRCULATION AREAS SHALL BE WIRED IN SINGLE CORE LSF CABLES CONTAINED IN GALVANISED STEEL CONDUIT AND TRUNKING.
 - 6.00 REFER TO ARCHITECTS AND IN2 DRAWINGS FOR TYPICAL WALL ELEVATIONS SHOWING SETTING OUT POSITIONS.
 - 7.00 EACH CIRCUIT IS TO BE SUPPLIED FROM A DEDICATED RCBO ON THE LOCAL GENERAL POWER DISTRIBUTION CENTRE.
CIRCUITS SHALL BE WIRED IN RING FORM WITH A MAXIMUM OF 8 No. TWIN SOCKET OUTLETS PER CIRCUIT. EACH CIRCUIT IS TO BE PROTECTED BY A DEDICATED 20A MCB/RCBO.
 - 9.00 ALL WALL FIXED OUTLETS SHALL BE MOUNTED AT 450mm AFFL UNLESS OTHERWISE INDICATED.

GENERAL SERVICES SCHEDULE OF SYMBOLS

	TWIN 13A SWITCHED SOCKET OUTLET
	TWIN 13A SWITCHED SOCKET OUTLET (MOUNTED AT 350mm AFFL UNLESS OTHERWISE STATED)
	SINGLE 13A SWITCHED SOCKET OUTLET
	SHAVER SOCKET OUTLET
	230V SWITCHED FUSED ISOLATOR C/W NEON INDICATOR
	230V SWITCHED FUSED ISOLATOR C/W NEON INDICATOR LOCATED ABOVE DOOR FOR USE WITH EXTRACT FAN
	ELECTRICAL DISTRIBUTION CENTRE
	GENERAL SERVICES CIRCUIT
	WALL MOUNTED DOUBLE POLE ISOLATOR SWITCH - SIZE AS INDICATED
	WALL MOUNTED DOUBLE POLE ISOLATOR SWITCH C/W NEON INDICATOR - SIZE AS INDICATED
	RJ45 DOUBLE VOICE / DATA OUTLET
	RJ45 VOICE / DATA OUTLET FOR USE WITH WIFI
	TV / COAXIAL OUTLET
	REFER TO TYPICAL UTILITY ROOM GENERAL SERVICE LAYOUT BELOW
	REFER TO TYPICAL KITCHEN GENERAL SERVICE LAYOUT BELOW



NOTE: ARCHITECTURAL DRAWING USED FOR COMPILATION OF IN2 DRAWING. ARCHITECTURAL DRAWING REVISION: DATE RECEIVED: 14.06.2019

STATUS	DATE	DESCRIPTION	DRN	ENG	APP	REV
S4	18.06.2019	CONSTRUCTION ISSUE	JDT	TH	BF	C2
S4	18.10.2018	CONSTRUCTION ISSUE	KO	TH	BF	C1

IN2
ENGINEERING DESIGN PARTNERSHIP
DUBLIN . ATHLONE . BELFAST . LONDON

PROJECT
BELSIZE PARK FIRESTATION

CLIENT
PLATINUM LAND

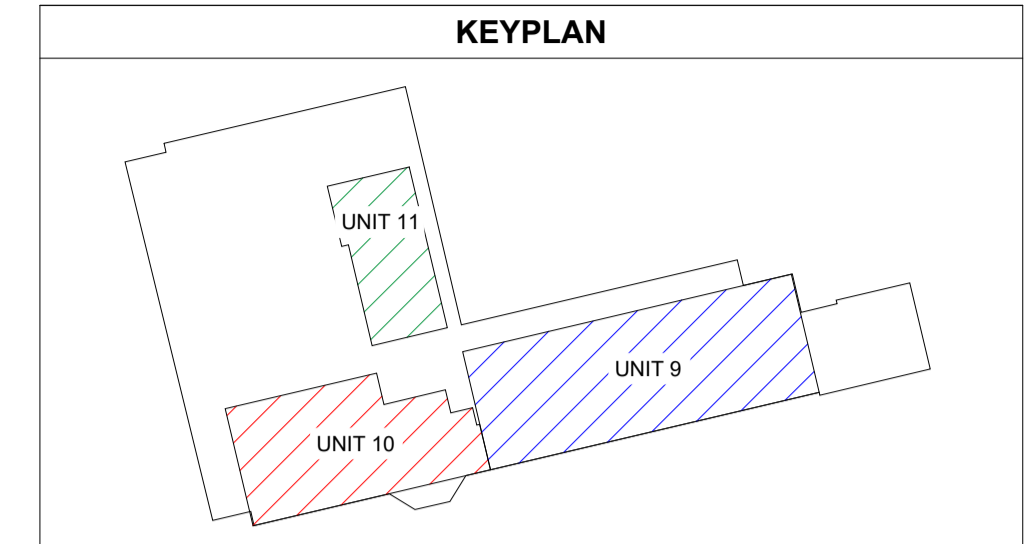
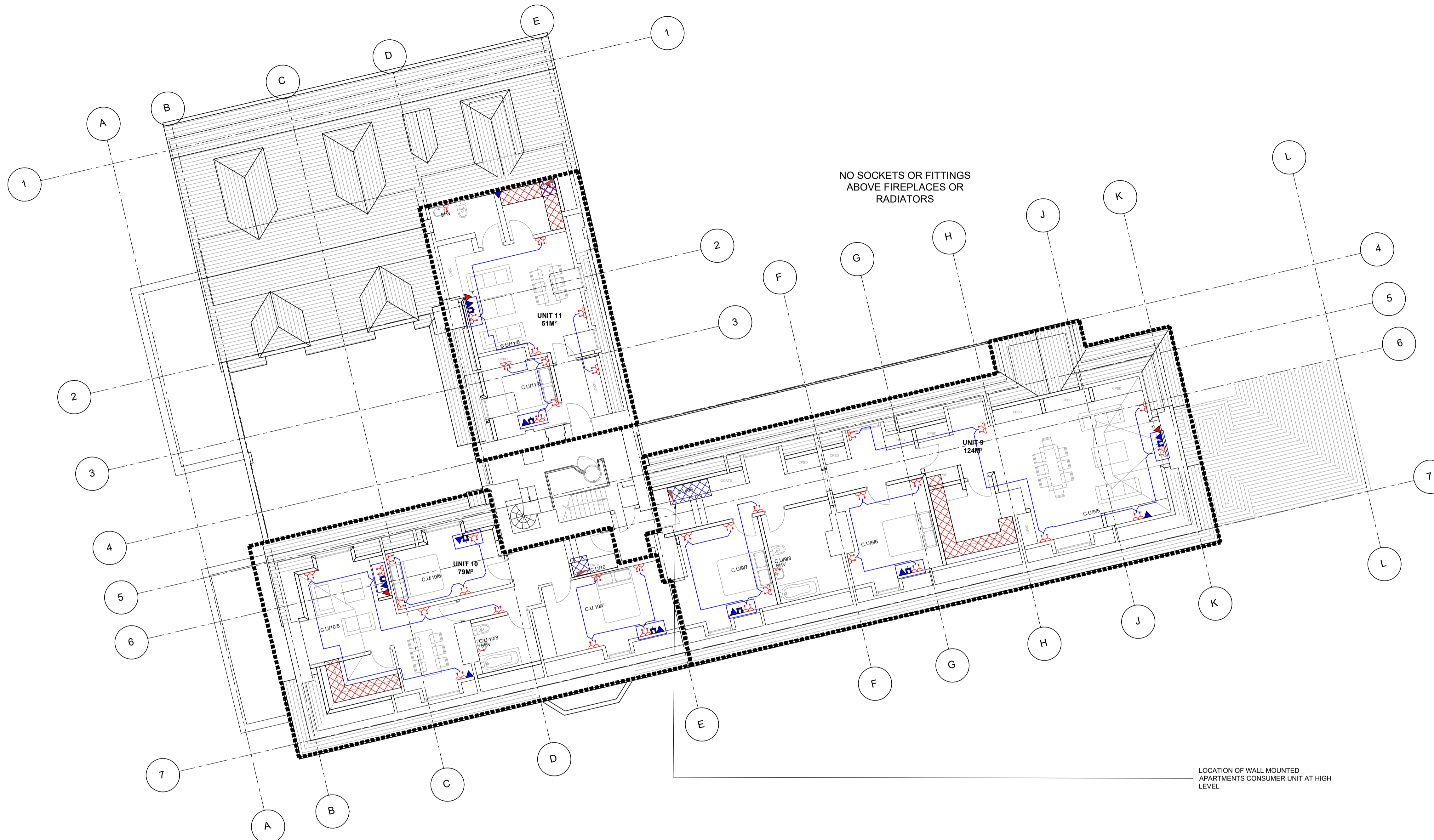
DRAWING TITLE
**ELECTRICAL SERVICES INSTALLATION
GROUND FLOOR LEVEL
GENERAL SERVICES LAYOUT**

SCALE
1:100 @ A1
1:200 @ A3

PROJECT REF: **L18051**
DRAWING No. **L18051-IN2-00-00-DR-E-2001**

STATUS
S4

REVISION
C2



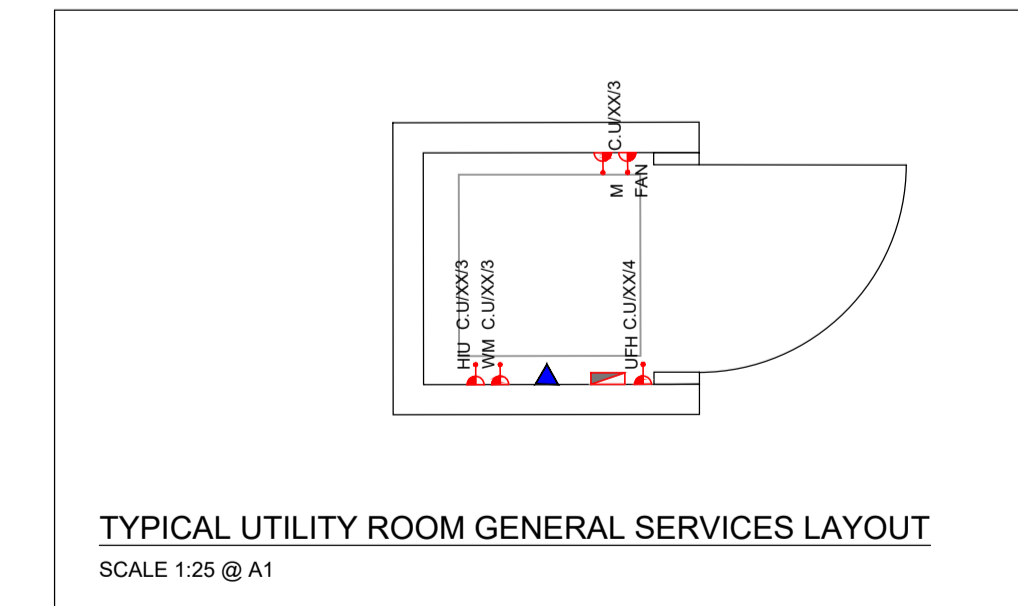
NOTES

- 1.00 THE COMPLETE INSTALLATION SHALL BE IN ACCORDANCE WITH BEST PRACTICE & THE CURRENT ELECTRICITY AT WORK REGULATIONS AND ELECTRICAL INSTALLATIONS 17TH EDITION WIRING REGULATIONS BS7671:2008+A3:2015
- 2.00 GENERAL POWER CABLING IN APARTMENTS TO BE WIRED IN 3x2.5mm² T+E CABLING CLIPPED TO THE BUILDING FABRIC.
- 3.00 ALL POWER CABLING WITHIN DRYLINED WALLS OR PARTITIONS TO BE CONTAINED IN HIGH IMPACT PVC CONDUIT. ALL BACK BOXES IN PARTITION WALLS TO BE PROVIDED WITH HILTY PUTTY PAD FOR ACOUSTIC ISOLATION.
- 4.00 THE GENERAL POWER CABLE INSTALLATIONS IN PLANT ROOM AREAS TO BE WIRED IN SINGLE CORE LSF CABLES CONTAINED IN GALVANISED STEEL CONDUIT AND TRUNKING.
- 5.00 WIRING TO ALL 13A SOCKET IN CORRIDORS AND GENERAL CIRCULATION AREAS SHALL BE WIRED IN SINGLE CORE LSF CABLES CONTAINED IN GALVANISED STEEL CONDUIT AND TRUNKING.
- 6.00 REFER TO ARCHITECTS AND I/2 DRAWINGS FOR TYPICAL WALL ELEVATIONS SHOWING SETTING OUT POSITIONS.
- 7.00 EACH CIRCUIT IS TO BE SUPPLIED FROM A DEDICATED RCBO ON THE LOCAL GENERAL POWER DISTRIBUTION CENTRE.
CIRCUITS SHALL BE WIRED IN RING FORM WITH A MAXIMUM OF 8 No. TWIN SOCKET OUTLETS PER CIRCUIT. EACH CIRCUIT IS TO BE PROTECTED BY A DEDICATED 20A MCB/RCBO.
- 9.00 ALL WALL FIXED OUTLETS SHALL BE MOUNTED AT 450mm AFFL UNLESS OTHERWISE INDICATED.

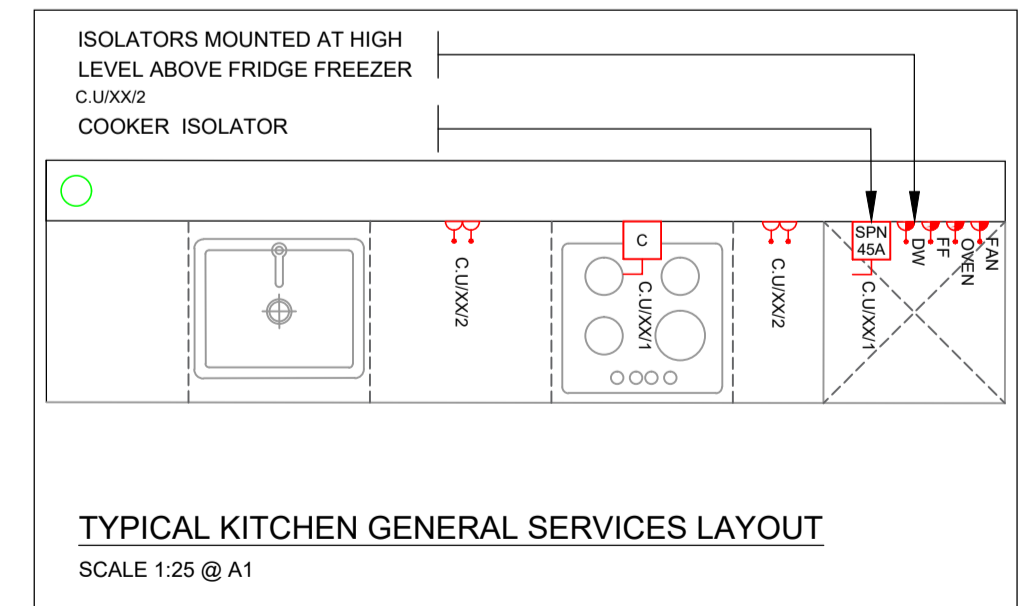
GENERAL SERVICES SCHEDULE OF SYMBOLS

- TWIN 13A SWITCHED SOCKET OUTLET
- TWIN 13A SWITCHED SOCKET OUTLET (MOUNTED AT 350mm AFFL UNLESS OTHERWISE STATED)
- SINGLE 13A SWITCHED SOCKET OUTLET
- SHAVER SOCKET OUTLET
- 230V SWITCHED FUSED ISOLATOR C/W NEON INDICATOR
- 230V SWITCHED FUSED ISOLATOR C/W NEON INDICATOR LOCATED ABOVE DOOR FOR USE WITH EXTRACT FAN
- ELECTRICAL DISTRIBUTION CENTRE
- GENERAL SERVICES CIRCUIT
- WALL MOUNTED DOUBLE POLE ISOLATOR SWITCH - SIZE AS INDICATED
- WALL MOUNTED DOUBLE POLE ISOLATOR SWITCH C/W NEON INDICATOR - SIZE AS INDICATED
- RJ45 DOUBLE VOICE / DATA OUTLET
- RJ45 VOICE / DATA OUTLET FOR USE WITH WIFI
- TV / COAXIAL OUTLET
- REFER TO TYPICAL UTILITY ROOM GENERAL SERVICE LAYOUT BELOW
- REFER TO TYPICAL KITCHEN GENERAL SERVICE LAYOUT BELOW

LOCATION OF WALL MOUNTED APARTMENTS CONSUMER UNIT AT HIGH LEVEL



TYPICAL UTILITY ROOM GENERAL SERVICES LAYOUT
SCALE 1:25 @ A1



TYPICAL KITCHEN GENERAL SERVICES LAYOUT
SCALE 1:25 @ A1

NOTE: ARCHITECTURAL DRAWING USED FOR COMPILATION OF I/2 DRAWING. ARCHITECTURAL DRAWING REVISION: DATE RECEIVED: 14.06.2019

STATUS	DATE	DESCRIPTION	DRN	ENG	APP	REV
S4	18.06.2019	CONSTRUCTION ISSUE	JDT	TH	BF	C2
S4	18.10.2018	CONSTRUCTION ISSUE	KO	TH	BF	C1

IN2
ENGINEERING DESIGN PARTNERSHIP
DUBLIN . ATHLONE . BELFAST . LONDON

PROJECT
BELSIZE PARK FIRESTATION

CLIENT
PLATINUM LAND

DRAWING TITLE
**ELECTRICAL SERVICES INSTALLATION
SECOND FLOOR LEVEL
GENERAL SERVICES LAYOUT**

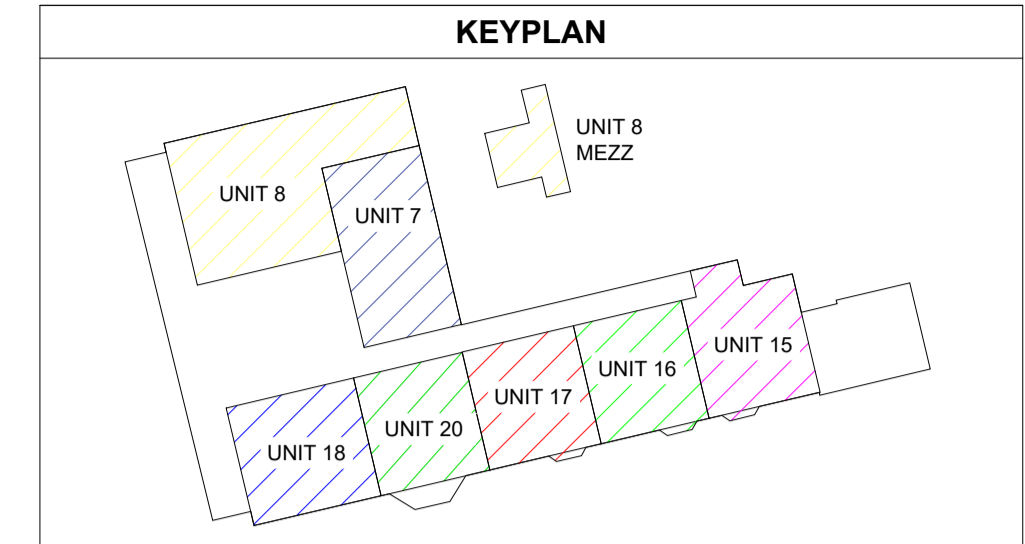
SCALE
1:100 @ A1
1:200 @ A3

PROJECT REF: **L18051**

DRAWING No.
L18051-IN2-00-02-DR-E-2001

STATUS
S4

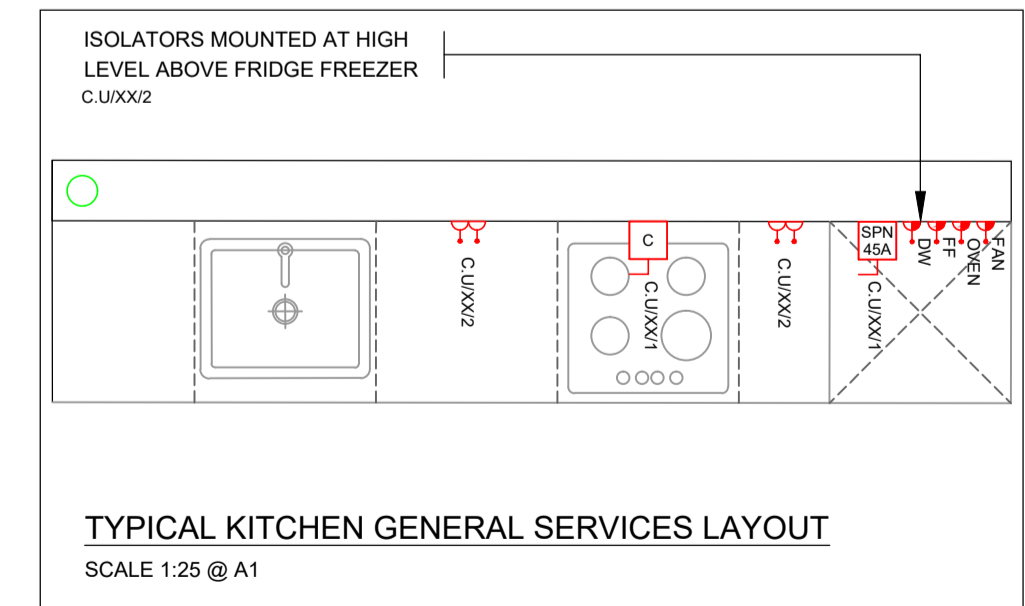
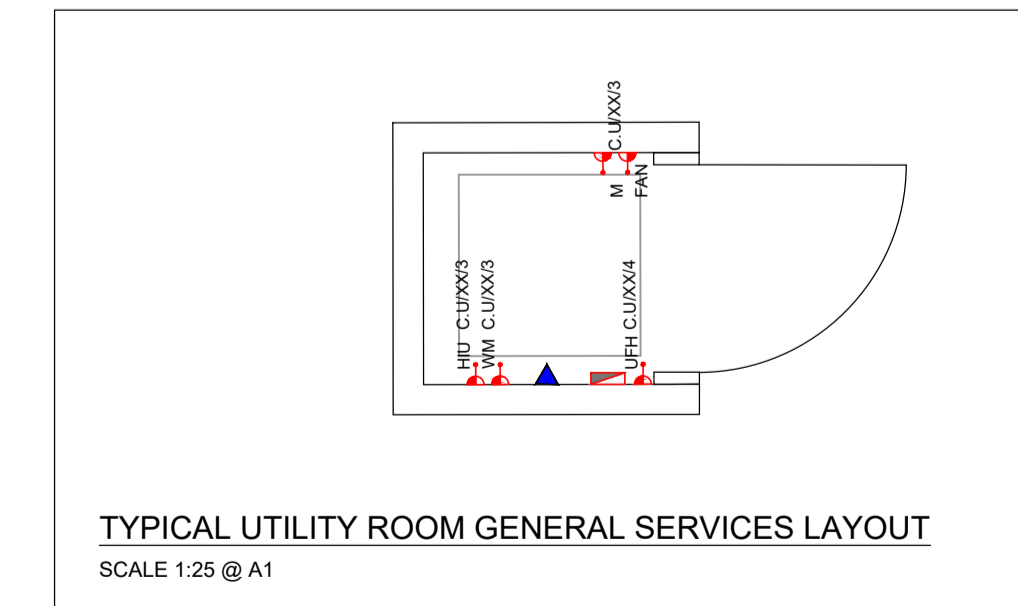
REVISION
C2



- NOTES**
- 1.00 THE COMPLETE INSTALLATION SHALL BE IN ACCORDANCE WITH BEST PRACTICE & THE CURRENT ELECTRICITY AT WORK REGULATIONS AND ELECTRICAL INSTALLATIONS 17TH EDITION WIRING REGULATIONS BS7671:2008+A3:2015
 - 2.00 GENERAL POWER CABLING IN APARTMENTS TO BE WIRED IN 3x2.5mm² T+E CABLING CLIPPED TO THE BUILDING FABRIC.
 - 3.00 ALL POWER CABLING WITHIN DRYLINED WALLS OR PARTITIONS TO BE CONTAINED IN HIGH IMPACT PVC CONDUIT. ALL BACK BOXES IN PARTITION WALLS TO BE PROVIDED WITH HILTY PUTTY PAD FOR ACOUSTIC ISOLATION.
 - 4.00 THE GENERAL POWER CABLE INSTALLATIONS IN PLANT ROOM AREAS TO BE WIRED IN SINGLE CORE LSF CABLES CONTAINED IN GALVANISED STEEL CONDUIT AND TRUNKING.
 - 5.00 WIRING TO ALL 13A SOCKET IN CORRIDORS AND GENERAL CIRCULATION AREAS SHALL BE WIRED IN SINGLE CORE LSF CABLES CONTAINED IN GALVANISED STEEL CONDUIT AND TRUNKING.
 - 6.00 REFER TO ARCHITECTS AND IN2 DRAWINGS FOR TYPICAL WALL ELEVATIONS SHOWING SETTING OUT POSITIONS.
 - 7.00 EACH CIRCUIT IS TO BE SUPPLIED FROM A DEDICATED RCBO ON THE LOCAL GENERAL POWER DISTRIBUTION CENTRE.
CIRCUITS SHALL BE WIRED IN RING FORM WITH A MAXIMUM OF 8 No. TWIN SOCKET OUTLETS PER CIRCUIT. EACH CIRCUIT IS TO BE PROTECTED BY A DEDICATED 20A MCB/RCBO.
 - 9.00 ALL WALL FIXED OUTLETS SHALL BE MOUNTED AT 450mm AFFL UNLESS OTHERWISE INDICATED.

GENERAL SERVICES SCHEDULE OF SYMBOLS

	TWIN 13A SWITCHED SOCKET OUTLET
	TWIN 13A SWITCHED SOCKET OUTLET (MOUNTED AT 350mm AFFL UNLESS OTHERWISE STATED)
	SINGLE 13A SWITCHED SOCKET OUTLET
	SHAVER SOCKET OUTLET
	230V SWITCHED FUSED ISOLATOR C/W NEON INDICATOR
	230V SWITCHED FUSED ISOLATOR C/W NEON INDICATOR LOCATED ABOVE DOOR FOR USE WITH EXTRACT FAN
	ELECTRICAL DISTRIBUTION CENTRE
	GENERAL SERVICES CIRCUIT
	WALL MOUNTED DOUBLE POLE ISOLATOR SWITCH - SIZE AS INDICATED
	WALL MOUNTED DOUBLE POLE ISOLATOR SWITCH C/W NEON INDICATOR - SIZE AS INDICATED
	RJ45 DOUBLE VOICE / DATA OUTLET
	RJ45 VOICE / DATA OUTLET FOR USE WITH WIFI
	TV / COAXIAL OUTLET
	REFER TO TYPICAL UTILITY ROOM GENERAL SERVICE LAYOUT BELOW
	REFER TO TYPICAL KITCHEN GENERAL SERVICE LAYOUT BELOW



NOTE: ARCHITECTURAL DRAWING USED FOR COMPILATION OF IN2 DRAWING. ARCHITECTURAL DRAWING REVISION: DATE RECEIVED: 14.06.2019

STATUS	DATE	DESCRIPTION	DRN	ENG	APP	REV
S4	18.06.2019	CONSTRUCTION ISSUE	JDT	TH	BF	C2
S4	18.10.2018	CONSTRUCTION ISSUE	KO	TH	BF	C1

IN2
ENGINEERING DESIGN PARTNERSHIP
DUBLIN . ATHLONE . BELFAST . LONDON

PROJECT
BELSIZE PARK FIRESTATION

CLIENT
PLATINUM LAND

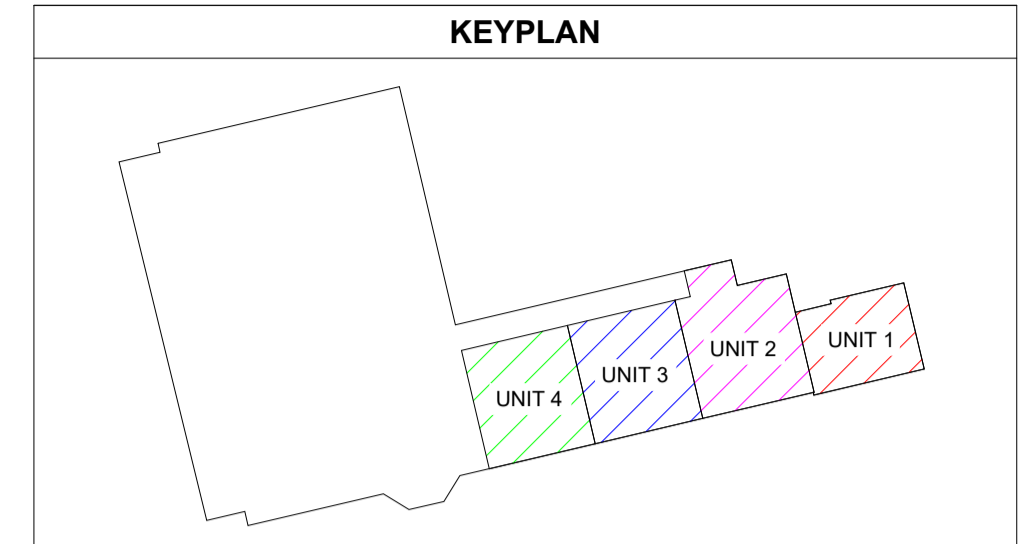
DRAWING TITLE
**ELECTRICAL SERVICES INSTALLATION
FIRST FLOOR LEVEL
GENERAL SERVICES LAYOUT**

SCALE
1:100 @ A1
1:200 @ A3

PROJECT REF: **L18051**
DRAWING No. **L18051-IN2-00-01-DR-E-2001**

STATUS
S4

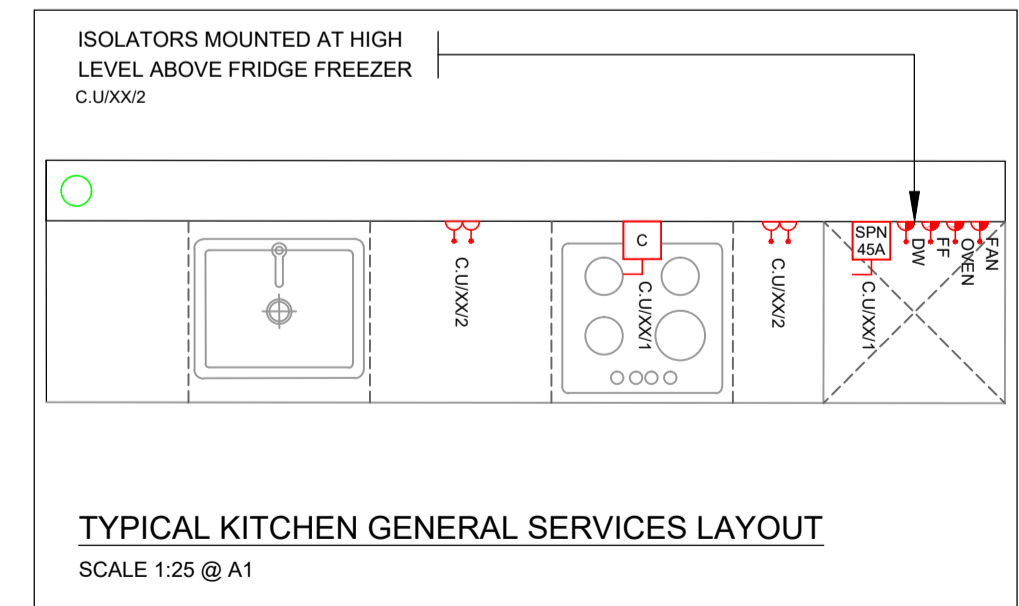
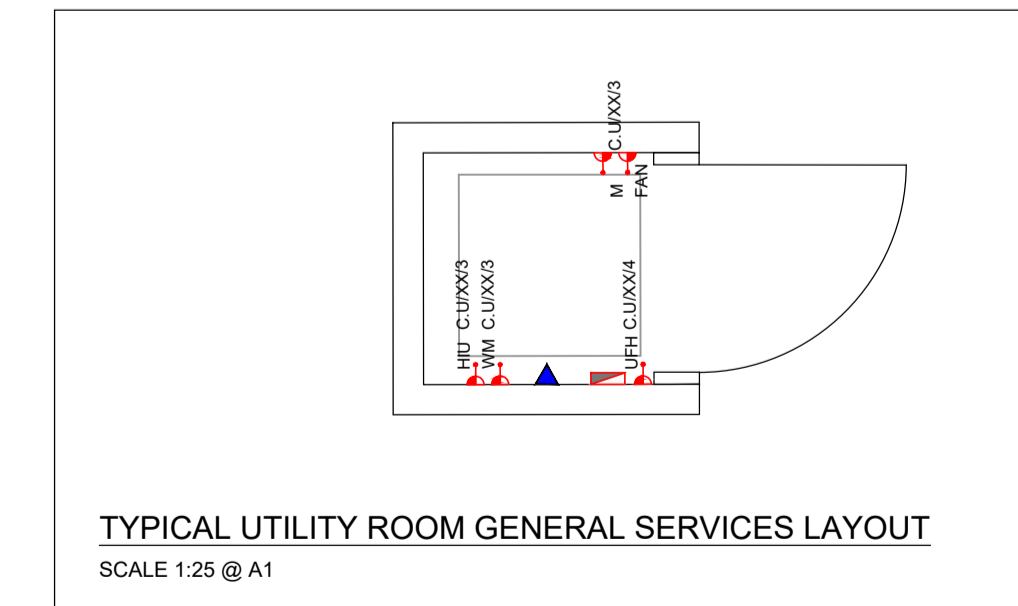
REVISION
C2



- NOTES**
- 1.00 THE COMPLETE INSTALLATION SHALL BE IN ACCORDANCE WITH BEST PRACTICE & THE CURRENT ELECTRICITY AT WORK REGULATIONS AND ELECTRICAL INSTALLATIONS 17TH EDITION WIRING REGULATIONS BS7671:2008+A3:2015
 - 2.00 GENERAL POWER CABLING IN APARTMENTS TO BE WIRED IN 3x2.5mm² T+E CABLING CLIPPED TO THE BUILDING FABRIC.
 - 3.00 ALL POWER CABLING WITHIN DRYLINED WALLS OR PARTITIONS TO BE CONTAINED IN HIGH IMPACT PVC CONDUIT. ALL BACK BOXES IN PARTITION WALLS TO BE PROVIDED WITH HILTY PUTTY PAD FOR ACOUSTIC ISOLATION.
 - 4.00 THE GENERAL POWER CABLE INSTALLATIONS IN PLANT ROOM AREAS TO BE WIRED IN SINGLE CORE LSF CABLES CONTAINED IN GALVANISED STEEL CONDUIT AND TRUNKING.
 - 5.00 WIRING TO ALL 13A SOCKET IN CORRIDORS AND GENERAL CIRCULATION AREAS SHALL BE WIRED IN SINGLE CORE LSF CABLES CONTAINED IN GALVANISED STEEL CONDUIT AND TRUNKING.
 - 6.00 REFER TO ARCHITECTS AND IN2 DRAWINGS FOR TYPICAL WALL ELEVATIONS SHOWING SETTING OUT POSITIONS.
 - 7.00 EACH CIRCUIT IS TO BE SUPPLIED FROM A DEDICATED RCBO ON THE LOCAL GENERAL POWER DISTRIBUTION CENTRE.
CIRCUITS SHALL BE WIRED IN RING FORM WITH A MAXIMUM OF 8 No. TWIN SOCKET OUTLETS PER CIRCUIT. EACH CIRCUIT IS TO BE PROTECTED BY A DEDICATED 20A MCB/RCBO.
 - 9.00 ALL WALL FIXED OUTLETS SHALL BE MOUNTED AT 450mm AFFL UNLESS OTHERWISE INDICATED.

GENERAL SERVICES SCHEDULE OF SYMBOLS

	TWIN 13A SWITCHED SOCKET OUTLET
	TWIN 13A SWITCHED SOCKET OUTLET (MOUNTED AT 350mm AFFL UNLESS OTHERWISE STATED)
	SINGLE 13A SWITCHED SOCKET OUTLET
	SHAVER SOCKET OUTLET
	230V SWITCHED FUSED ISOLATOR C/W NEON INDICATOR
	230V SWITCHED FUSED ISOLATOR C/W NEON INDICATOR LOCATED ABOVE DOOR FOR USE WITH EXTRACT FAN
	ELECTRICAL DISTRIBUTION CENTRE
	GENERAL SERVICES CIRCUIT
	WALL MOUNTED DOUBLE POLE ISOLATOR SWITCH - SIZE AS INDICATED
	WALL MOUNTED DOUBLE POLE ISOLATOR SWITCH C/W NEON INDICATOR - SIZE AS INDICATED
	RJ45 DOUBLE VOICE / DATA OUTLET
	RJ45 VOICE / DATA OUTLET FOR USE WITH WIFI
	TV / COAXIAL OUTLET
	REFER TO TYPICAL UTILITY ROOM GENERAL SERVICE LAYOUT BELOW
	REFER TO TYPICAL KITCHEN GENERAL SERVICE LAYOUT BELOW



NOTE: ARCHITECTURAL DRAWING USED FOR COMPILATION OF IN2 DRAWING. ARCHITECTURAL DRAWING REVISION: DATE RECEIVED: 14.06.2019

STATUS	DATE	DESCRIPTION	DRN	ENG	APP	REV
S4	18.06.2019	CONSTRUCTION ISSUE	JDT	TH	BF	C2
S4	18.10.2018	CONSTRUCTION ISSUE	KO	TH	BF	C1

IN2
ENGINEERING DESIGN PARTNERSHIP
DUBLIN . ATHLONE . BELFAST . LONDON

PROJECT
BELSIZE PARK FIRESTATION

CLIENT
PLATINUM LAND

DRAWING TITLE
**ELECTRICAL SERVICES INSTALLATION
BASEMENT LEVEL 1
GENERAL SERVICES LAYOUT**

SCALE
1:100 @ A1
1:200 @ A3

SIZE
A1

PROJECT REF: **L18051**

DRAWING No.
L18051-IN2-00-B1-DR-E-2001

STATUS
S4

REVISION
C2