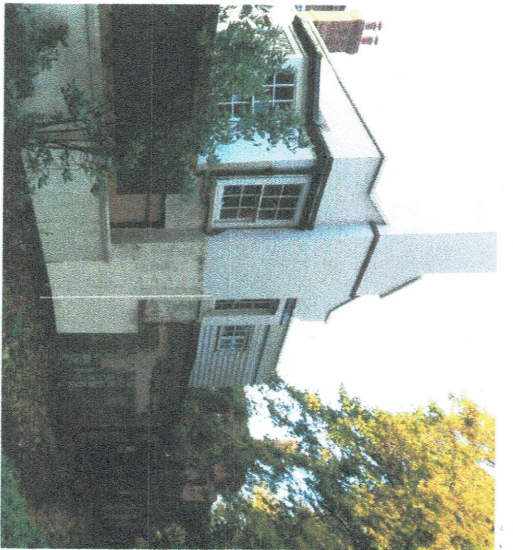




LOCATION A WITHOUT POLE



LOCATION A WITH POLE

DESCRIPTION:

A 3.5-metre high pole adjacent to the flank wall of Cappo do Monte with a wire connecting to a replacement 3.5 metre high parking pole and, using 1.6mm clear nylon wire to accommodate adjacent trees, extend to a third pole adjacent to the third timber post beyond the lampost on the north side of Judges Walk and the final pole adjacent to the wall of Summit Lodge within the overhanging ivy. Refix parking sign as previously to pole B.



LOCATION B WITHOUT POLE



LOCATION B WITH POLE



LOCATION PLAN SCALE 1:1250

REV'N B - location C photos corrected, wire through trees revised
DRAWING REF: 868.28A&B.1

CAMDEN ERUV - LOCATION 28- WINDMILL HILL

ROSENFELDER ASSOCIATES
Chartered Architects + Planning Consultants
10-12 Perrins Court Hampstead LONDON NW3 (020) 7794 4425



LOCATION C WITHOUT POLE



LOCATION C WITH POLE



LOCATION D WITHOUT POLE



LOCATION D WITH POLE

CAMDEN ERUV - LOCATION 28 - WINDMILL HILL

DESCRIPTION:

A 3.5-metre high pole adjacent to the flank wall of Capu do Monte with a wire connecting to a replacement 3.5 metre high parking pole and, using 1.6mm clear nylon wire to accommodate adjacent trees, extend to a third pole adjacent to the third timber post beyond the lamppost on the north side of Judges Walk and the final pole adjacent to the wall of Summit Lodge within the overhanging ivy. Refix parking sign as previously to pole B.



LOCATION PLAN SCALE 1:1250

REV'N B - location C photos corrected,
 wire through trees revised
 DRAWING REF: 868.28C&D.1

ROSENFELDER ASSOCIATES
 Chartered Architects + Planning Consultants
 10-12 Perrins Court Hampstead LONDON NW3 (020) 7794 4425



LOCATION A WITHOUT POLE



LOCATION A WITH POLE



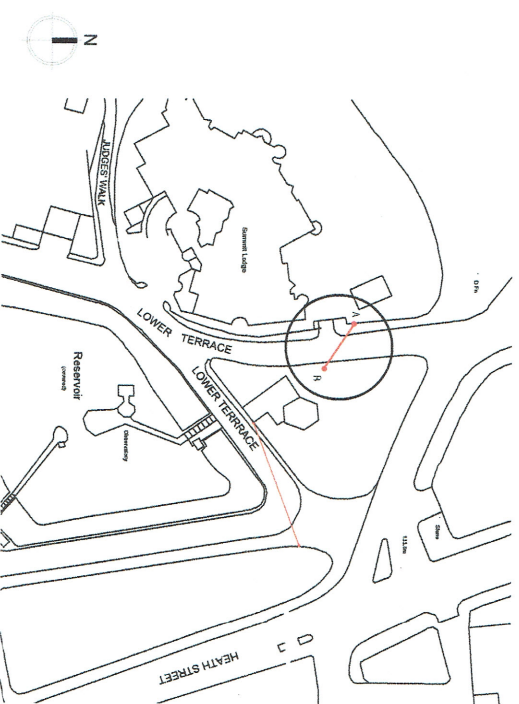
LOCATION B WITHOUT POLE



LOCATION B WITH POLE

DESCRIPTION:

A 5.5-metre high pole with a wire crossing Lower Terrace diagonally to a matching pole set immediately in front of the cleft chestnut paling fence to the planted area; existing No Left Turn sign to be removed from adjacent lamp post and fixed to Pole 308 at identical height.



LOCATION PLAN SCALE 1:1250

REV'N D Pole A relocated 1200 to the right to protect adjacent tree

DRAWING REF: 868.30

ROSENFELDER ASSOCIATES

Chartered Architects + Planning Consultants
10-12 Patens Court Hampstead LONDON NW3 (020) 7794 4425

CAMDEN ERUV - LOCATION 30 - LOWER TERRACE