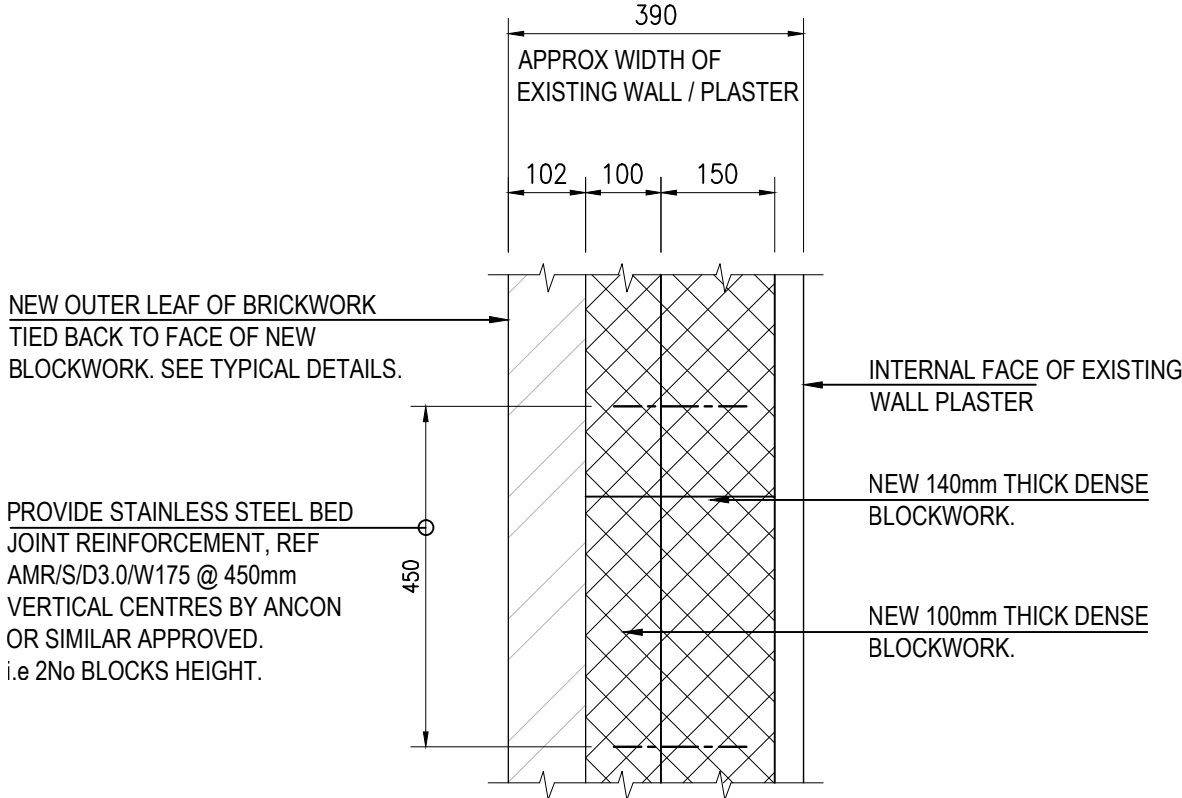


Condition 4b - Proposed South Elevation



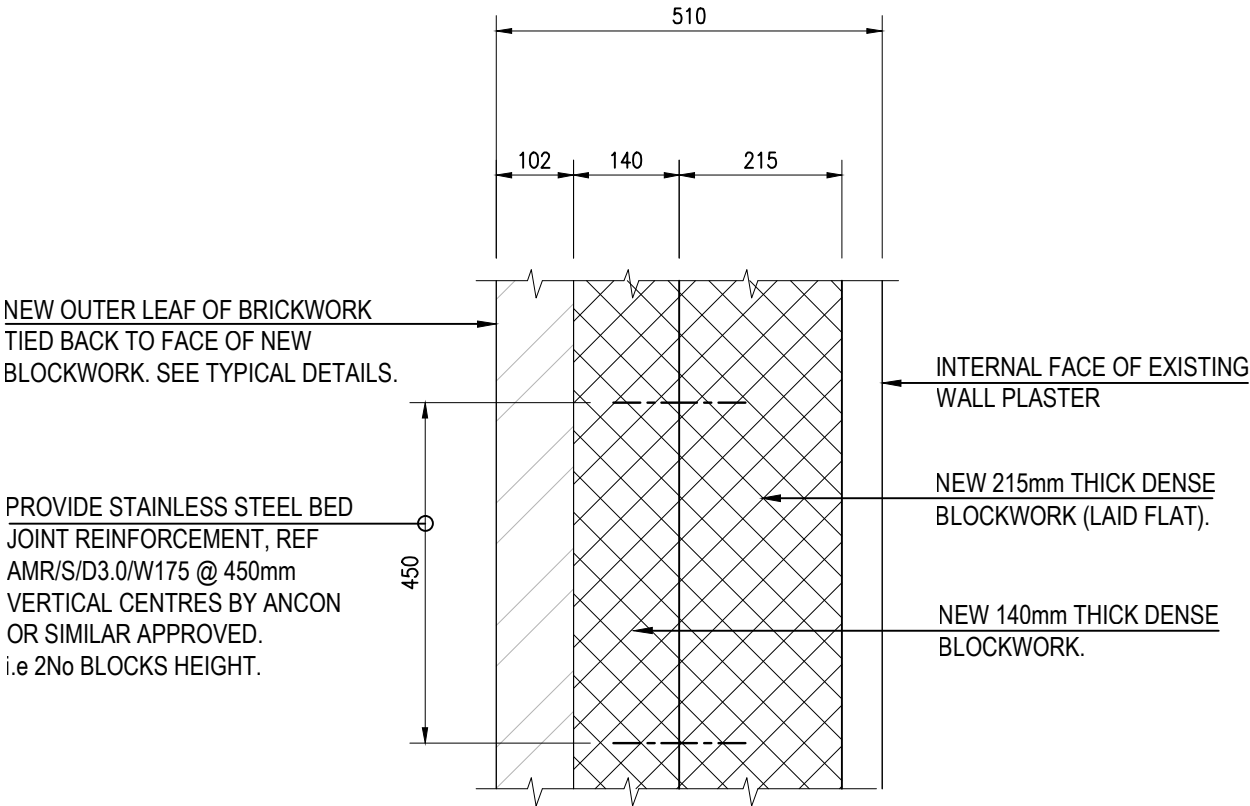
EXTERNAL SOUTH ELEVATION ON WORKHOUSE WALL IN BEDFORD PASSAGE

Condition 4b - Proposed South Elevation - Typical wall details



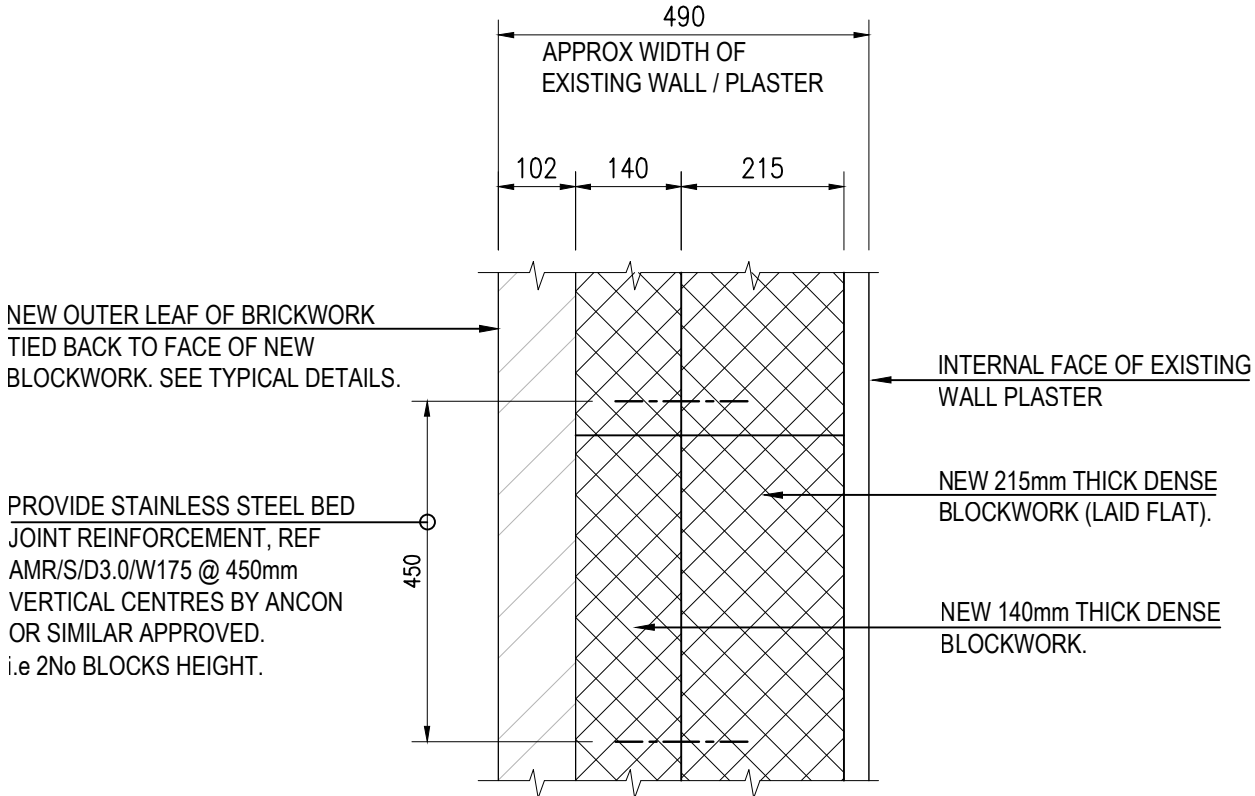
LEVEL 03

1:10



LEVEL -1

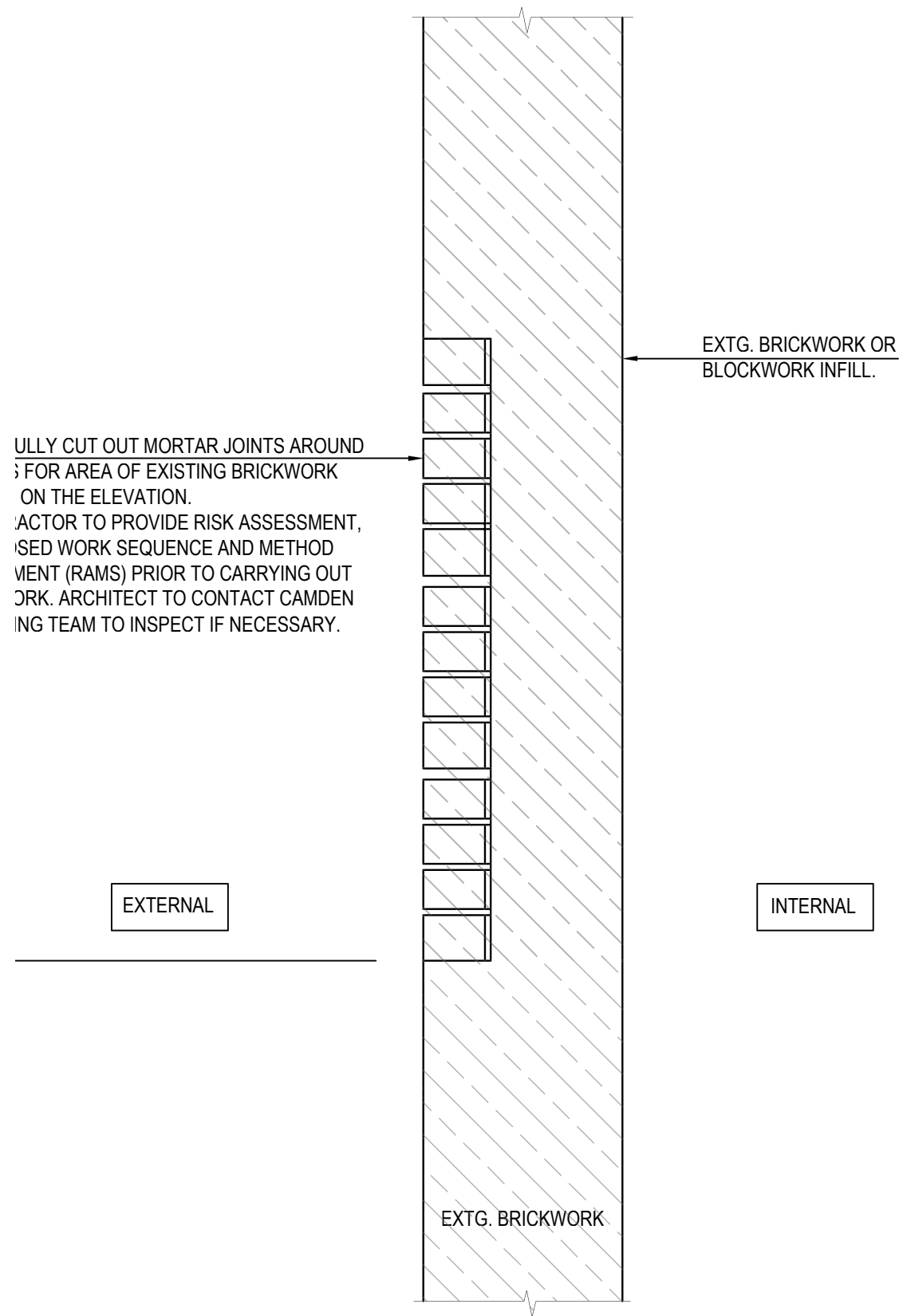
1:10



LEVELS 00, 01 & 02

1:10

Condition 4b - Proposed South Elevation - Typical wall details



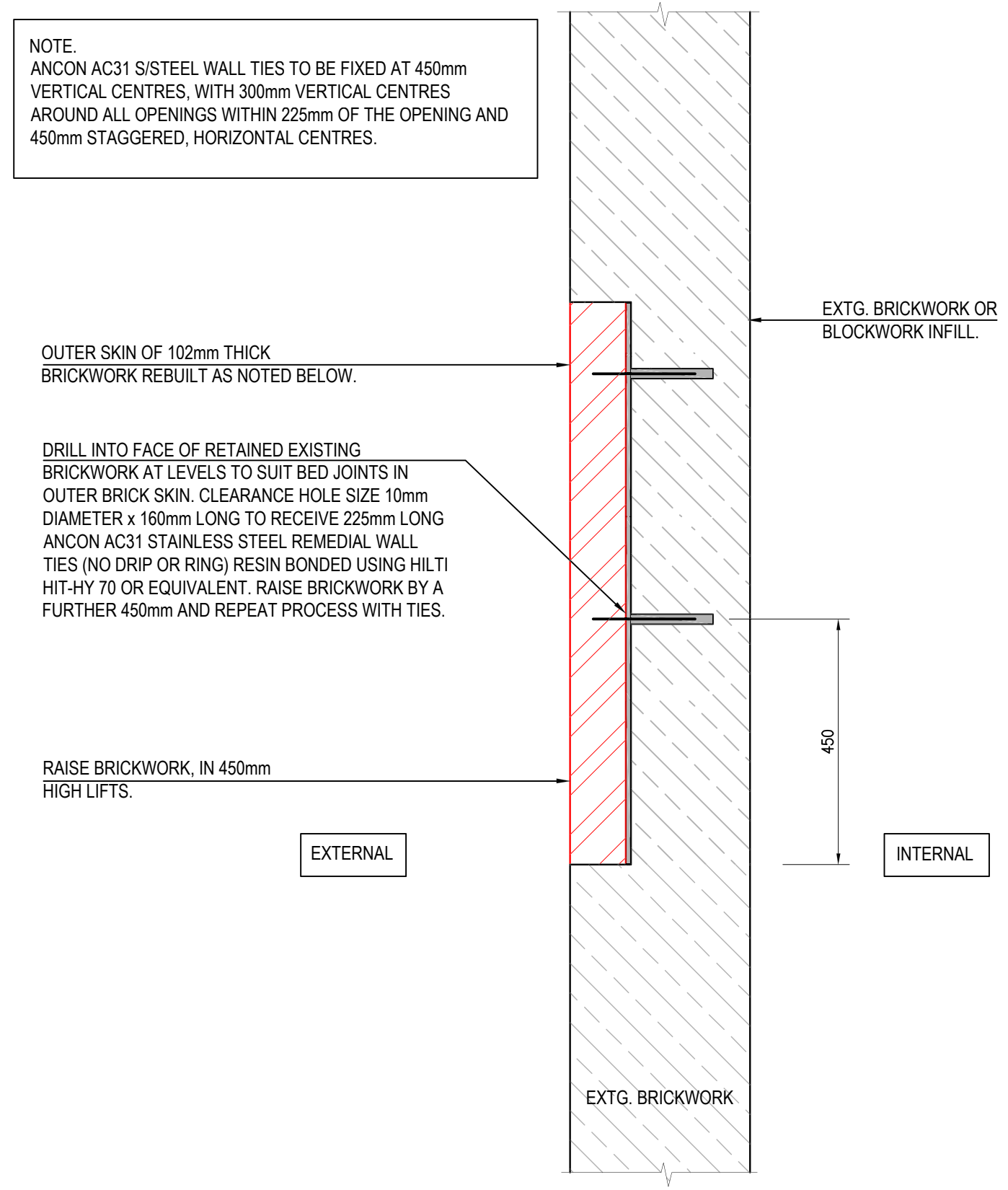
**TYPICAL SECTION A - A
THROUGH EXT. WALL
STAGE 1**

NOTE.
ANCON AC31 S/STEEL WALL TIES TO BE FIXED AT 450mm VERTICAL CENTRES, WITH 300mm VERTICAL CENTRES AROUND ALL OPENINGS WITHIN 225mm OF THE OPENING AND 450mm STAGGERED, HORIZONTAL CENTRES.

OUTER SKIN OF 102mm THICK BRICKWORK REBUILT AS NOTED BELOW.

DRILL INTO FACE OF RETAINED EXISTING BRICKWORK AT LEVELS TO SUIT BED JOINTS IN OUTER BRICK SKIN. CLEARANCE HOLE SIZE 10mm DIAMETER x 160mm LONG TO RECEIVE 225mm LONG ANCON AC31 STAINLESS STEEL REMEDIAL WALL TIES (NO DRIP OR RING) RESIN BONDED USING HILTI HIT-HY 70 OR EQUIVALENT. RAISE BRICKWORK BY A FURTHER 450mm AND REPEAT PROCESS WITH TIES.

RAISE BRICKWORK, IN 450mm HIGH LIFTS.



**SECTION A - A
STAGE 3
1:10**

Condition 4b - Proposed North elevation

Workhouse - North Elevation

The following drawing highlights the proposed areas to the North Facade.

The previous pages highlighted on plan the areas that will require either window opening up locations or brickwork infilling to existing openings.

Rear Elevation

The 2 photos illustrate the following:

Existing Basement Floor - This is already partially infilled, below the existing basement slab. A new basement slab will be installed and the existing window opening will be infilled. The existing window opening is at ground floor plinth level which will be re-rendered.

Top floor window - Existing window opening that has been infilled will be reinstated. Single glazed sash window to be installed with secondary glazing.



Condition 4b - Proposed North Elevation



Condition 4b - Typical Window Detail

Sliding Sash Timber Windows

Manufacturer: George Barnsdale.

Product reference: Sliding Sash Timber Window

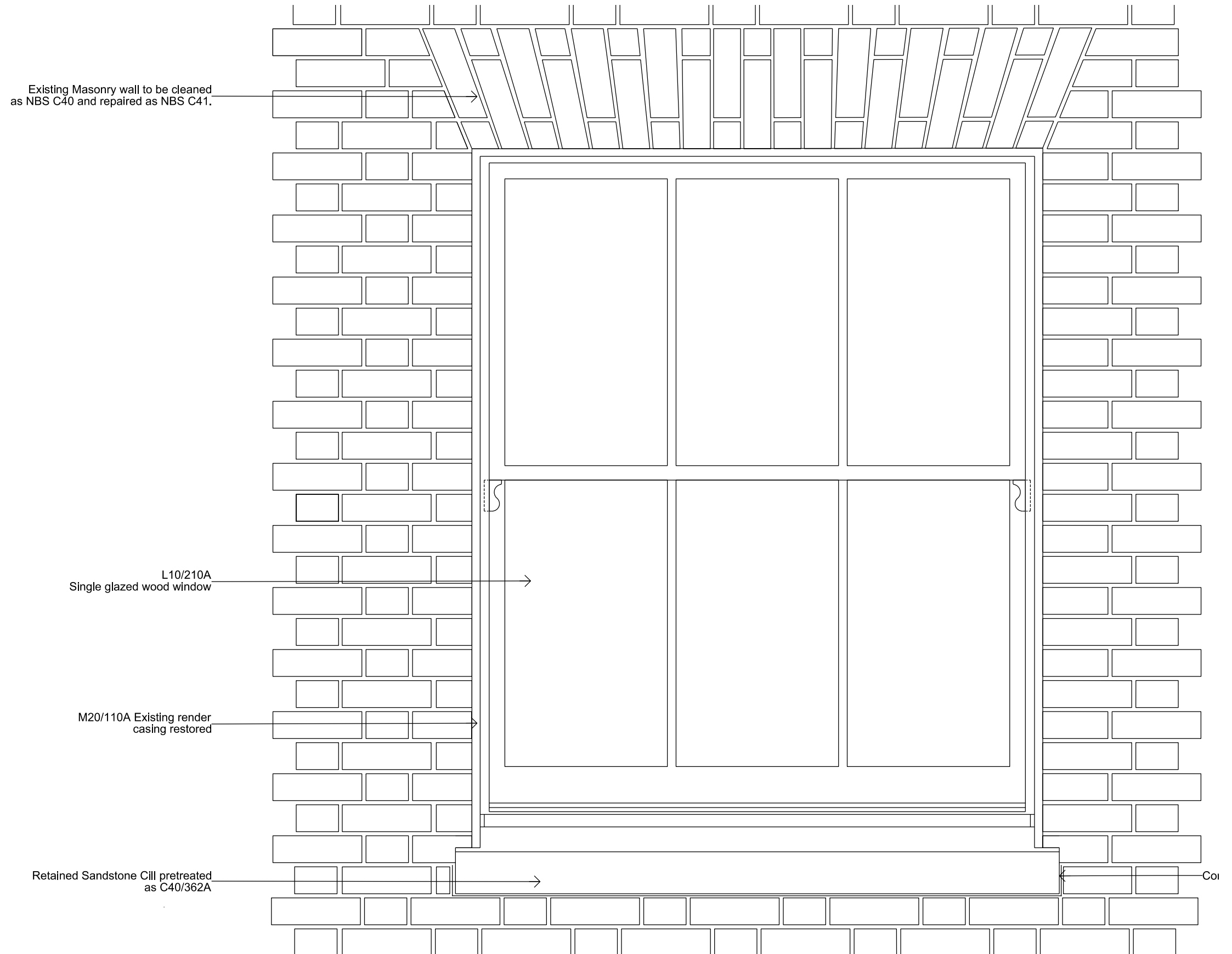
Sliding Sash Window

- Engineered Redwood c/w Accoya® external.
- Sill: Grandis hardwood.
- Linings: Engineered Redwood.
- Sashes: Engineered Redwood.
- Frame Profile: manufacturer's Historic Linings
- Section width (s) : 144 mm
- Sash - Section width: 21mm .
- Glazing bar type G1 - Historic Gothic
- Horn type: Manufacturer's Type B
- Finish: Paint finish: RAL 9016 as M60/130A.
- Draught seals: white.
- Glazing: Single glazed
- Thickness: 6mm .
- Glazing method: Putty Standard White
- Pane type: toughened .
- Overall Frame U-Value: 4.4W/m2K.
- Ironmongery: as P21/592
- Top Sash: D Handle; sash fastener catch; sash eye.
- Security Stops: 100 mm.
- Bottom Sash: Sash Fastener, Sash Lifts
- Frame: Sash Pulley (S1).
- Furniture (including S1 Pulley): Satin chrome.
- Draughtseals : White.
- Trickle vent position (Listed Building only)

Secondary Double Glazing to Sash window

Manufacturer: Selectaglaze Ltd

- Series 20 Slimline vertical Sliding (VS) 2 panes
- Series 20 Fxed Unit with H18 Vivo handle
- Thermal performance:
- U-value (including frame): maximum 1.6 W/m2k
- G-value: 0.4. It is understood this will rely on application of solar control film to the cavity side of the glass panes.
- Finish: Manufacturer's standard white powder paint.
- Gloss level: HIPCA semi-gloss to BS 6496.
- Glazing: double glazed units
- Type: Toughened K / 16mm cavity / 4mm Planitherm
- Thickness: 4mm



Opening retained
New Single Glazed Sash Windows
Scale 1:10