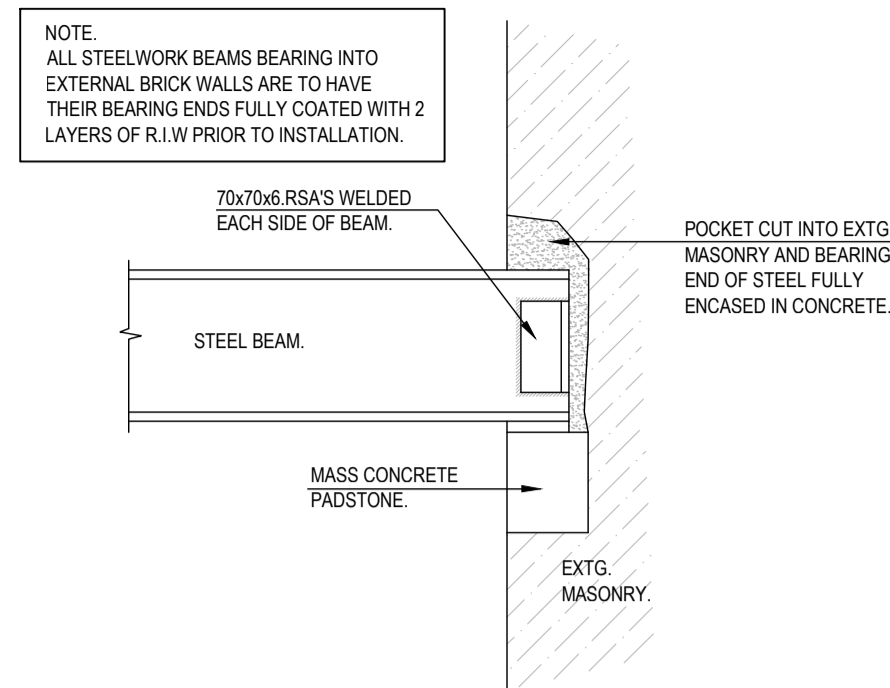
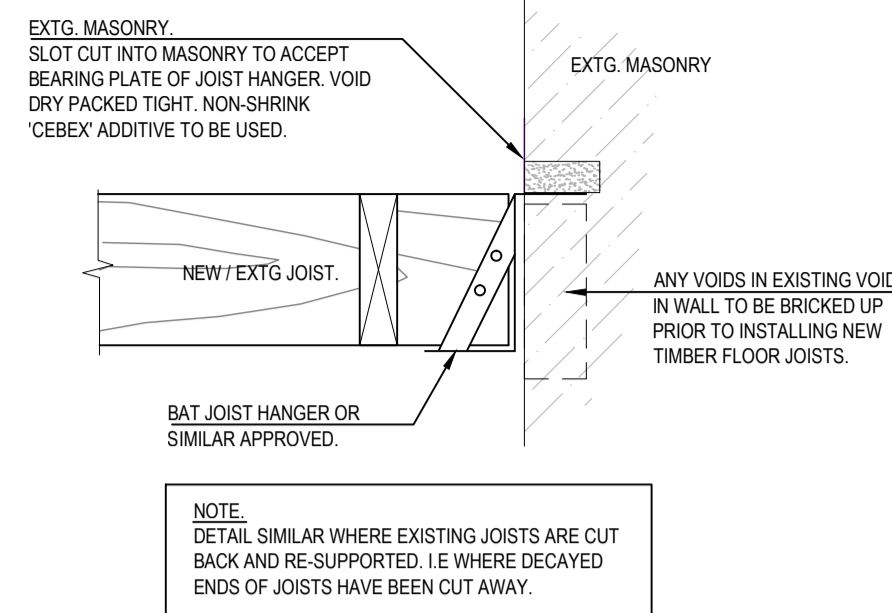


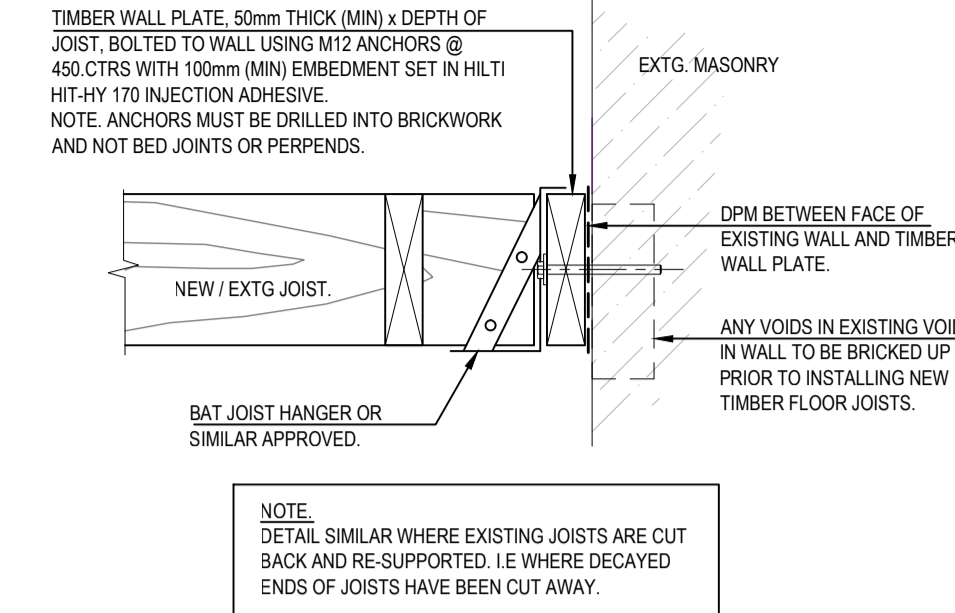
TYPICAL LINTEL DETAIL IN EXISTING MASONRY
DETAIL 1



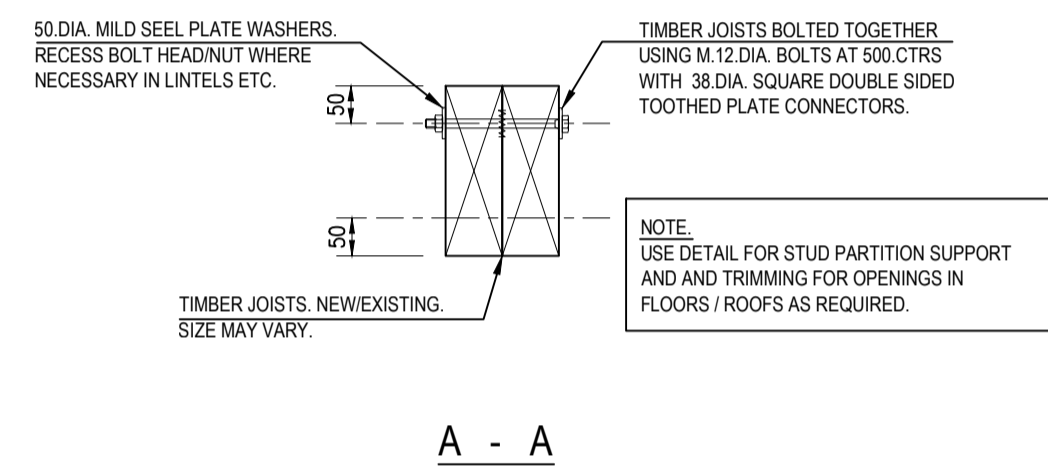
TYPICAL PADSTONE DETAIL [EXISTING MASONRY]
 PROVIDE 12.m.m THICK SUPALUX BOARD OR SIMILAR AS BACK SHUTTER IF STEEL IS BUILT INTO FLUE.
DETAIL 2



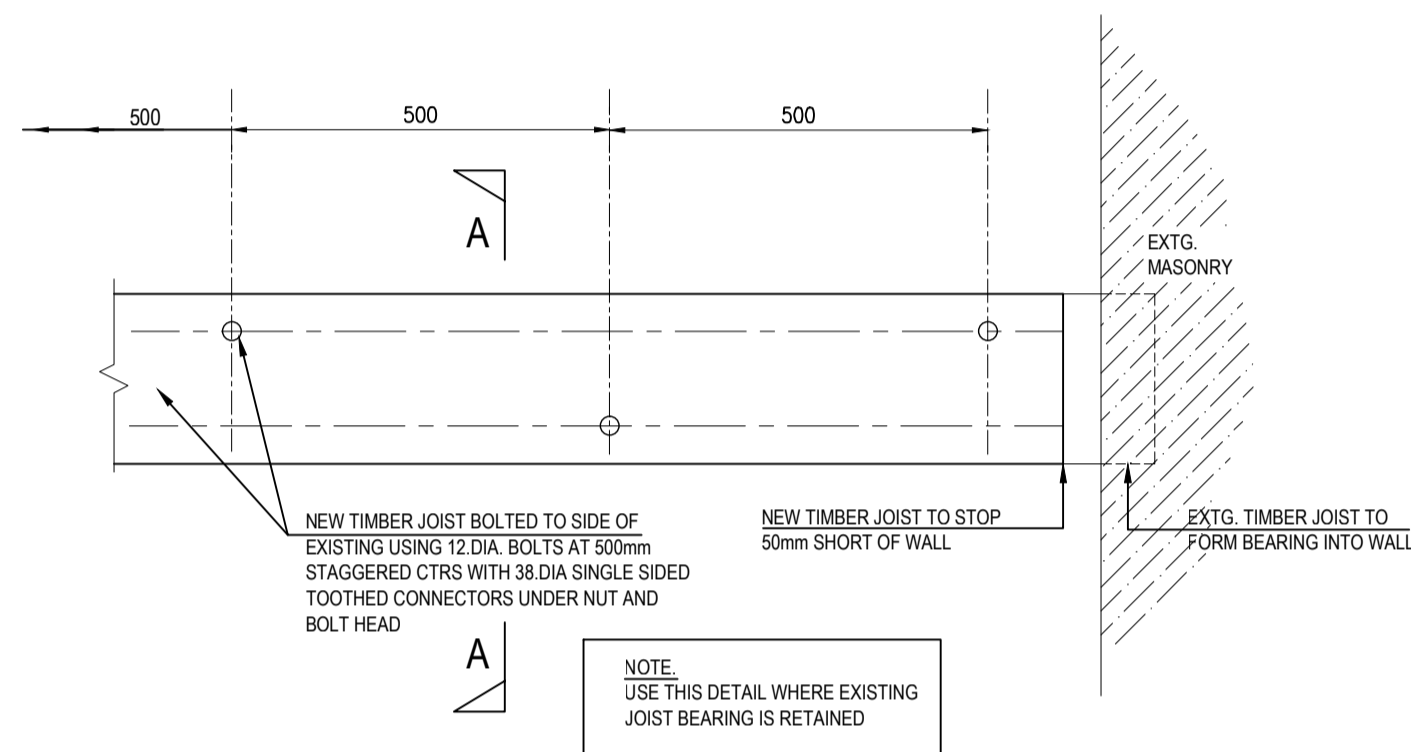
TYPICAL FLOOR / ROOF JOIST SUPPORT DETAIL IN EXTG. MASONRY WALLS.
DETAIL 3



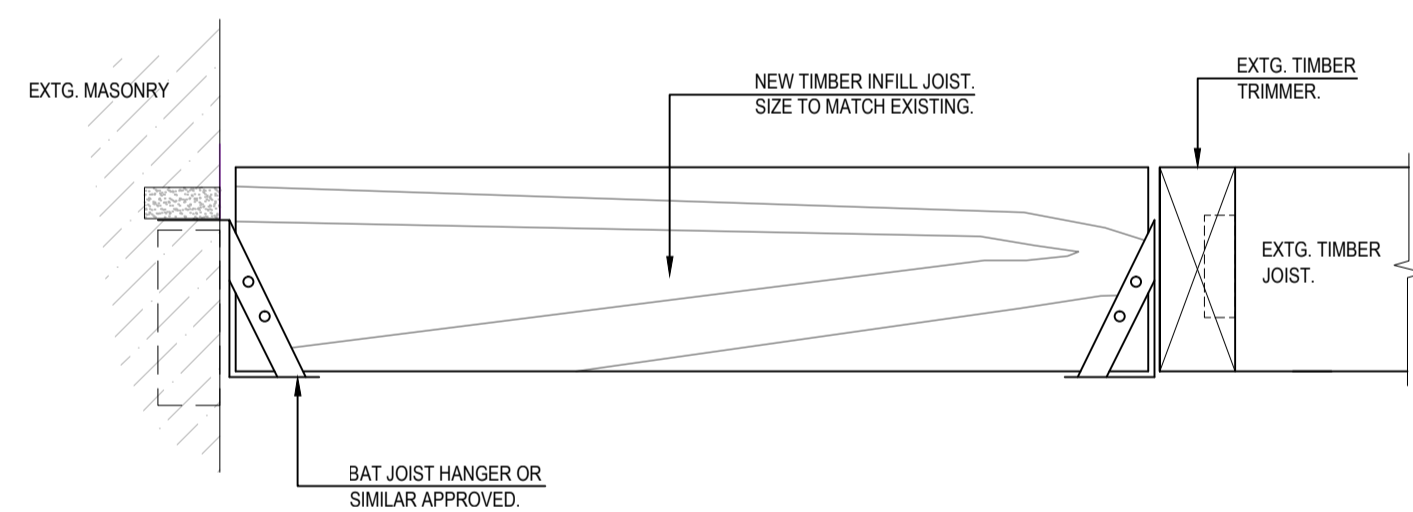
TYPICAL FLOOR / ROOF JOIST SUPPORT DETAIL IN EXTG. MASONRY WALLS.
DETAIL 3A



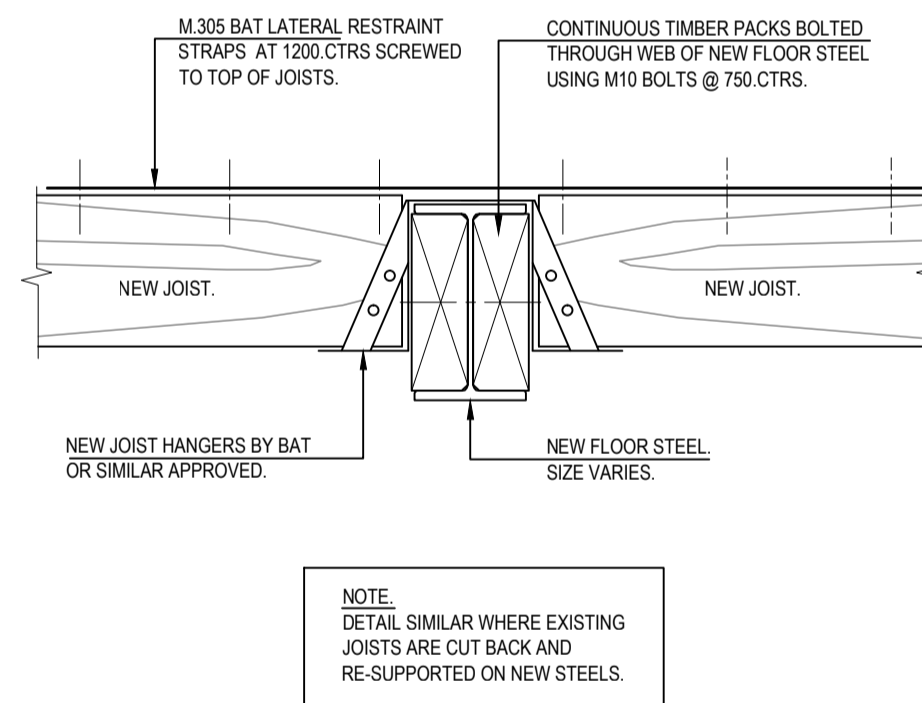
DOUBLE JOIST / RAFTER DETAIL
DETAIL 4



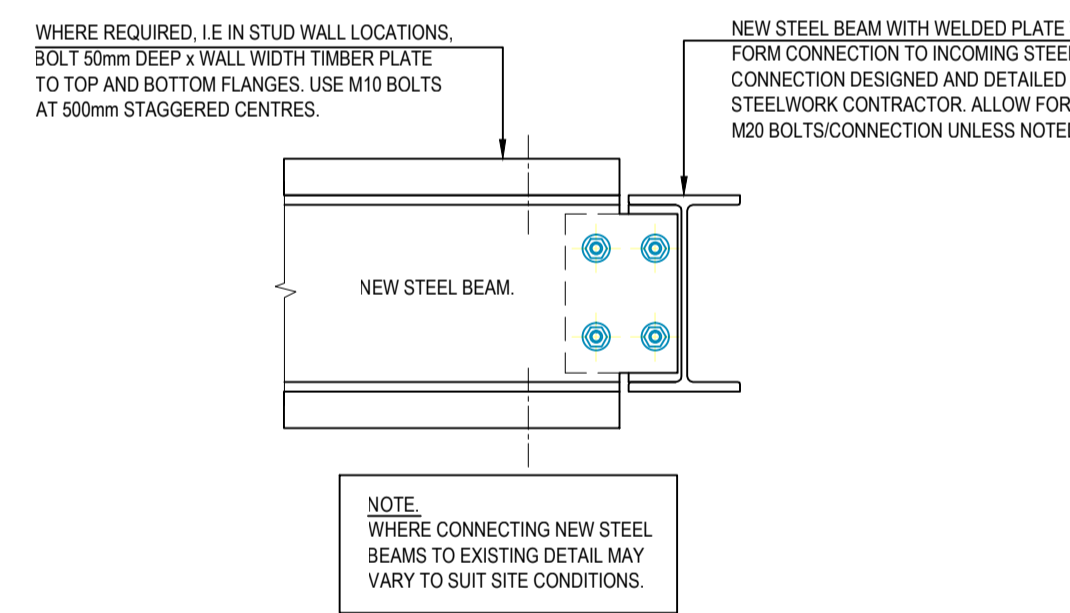
TYPICAL EXISTING TIMBER JOIST NOTCH REPAIR DETAILS
DETAIL 5



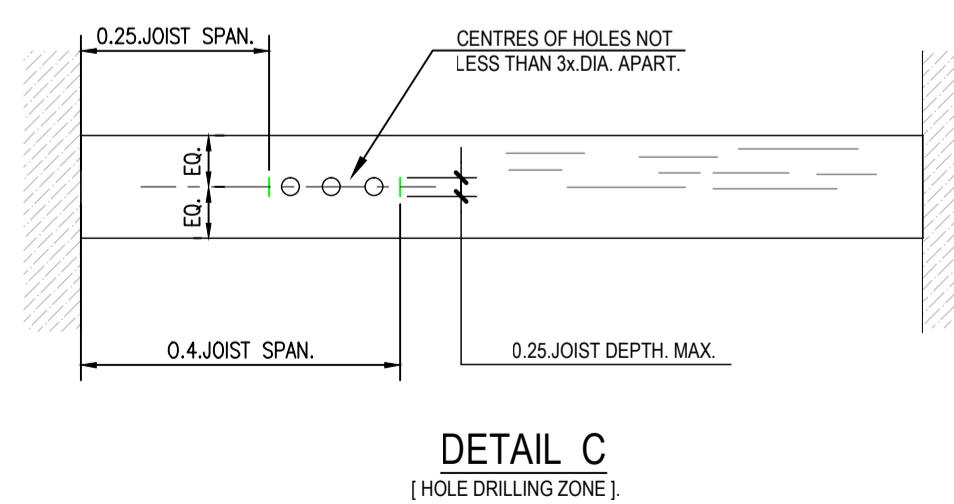
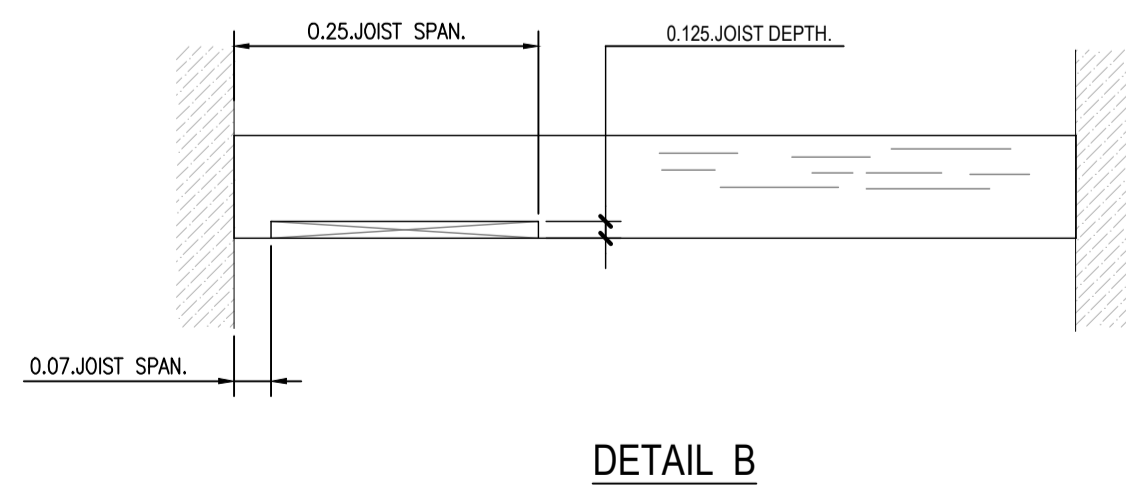
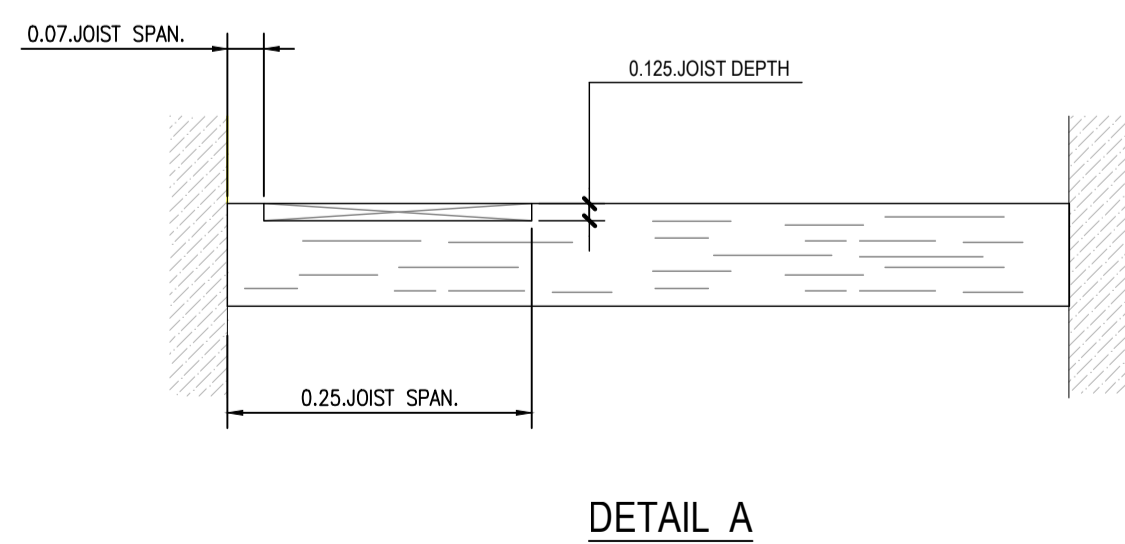
TYPICAL INFILL DETAIL WHERE CHIMNEY BREAST/HEARTH HAS BEEN REMOVED
DETAIL 6



TYPICAL TIMBER FLOOR JOIST SUPPORT DETAIL ON NEW STEEL BEAM.
DETAIL 7



TYPICAL STEELWORK TO STEELWORK CONNECTION DETAIL.
DETAIL 8



TYPICAL PERMISSIBLE NOTCHING & DRILLING DETAILS FOR ALL TIMBER JOISTS.
DETAIL 9

ISSUE/REVISION		
C1	09.08.2019	CONSTRUCTION ISSUE
I/R	DATE	DESCRIPTION

KEY PLAN

This drawing has been prepared for the use of AECOM's client. It may not be used, modified, reproduced or relied upon by third parties, except as agreed by AECOM or as required by law. AECOM accepts no responsibility, and denies any liability, whatsoever, to any party that uses or relies on this drawing without AECOM's express written consent. All measurements must be obtained from the stated dimensions.