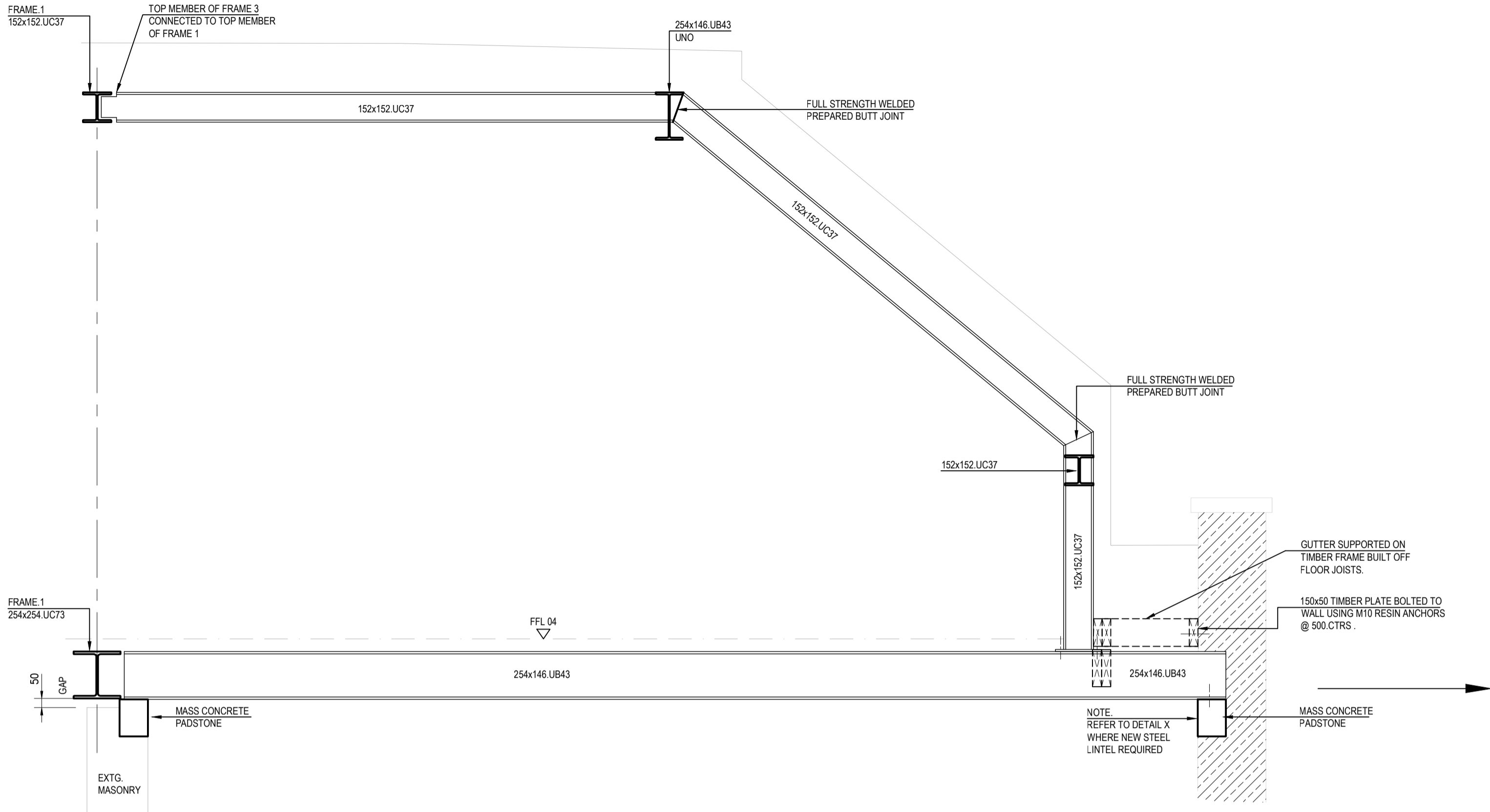
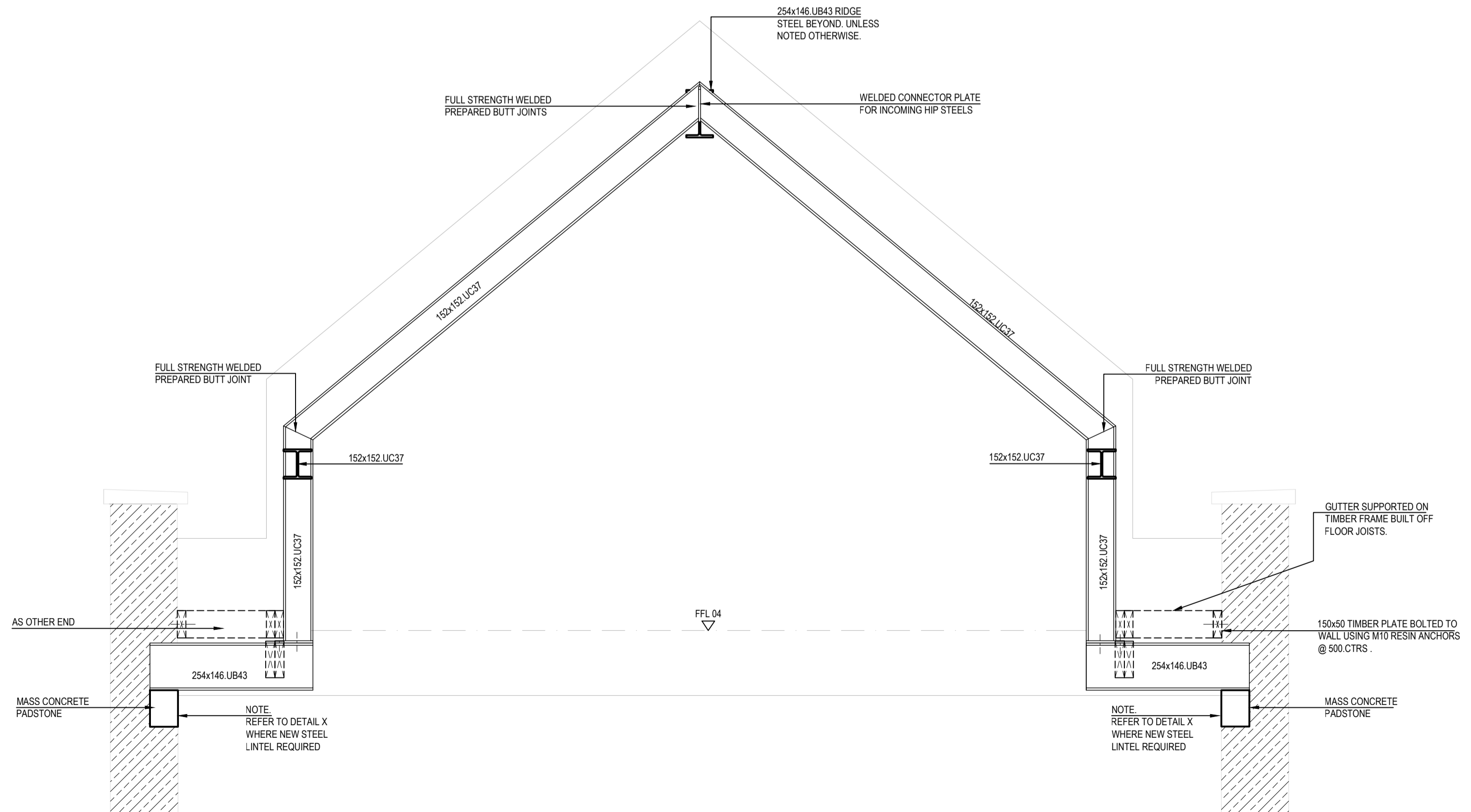


**NOTE:**  
 FOR SETTING OUT OF STEELWORK  
 REFER TO ARCHITECTS DETAILS

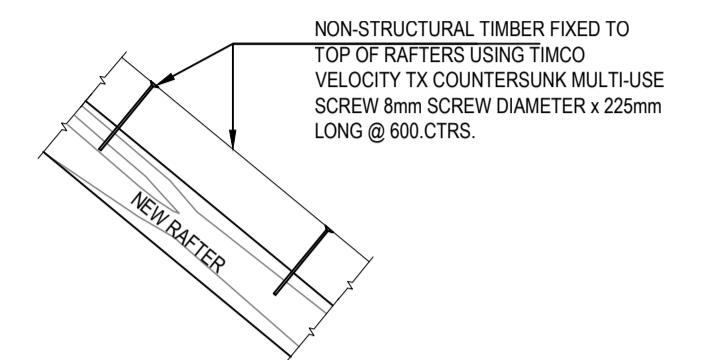


**FRAME TYPE 3**  
 1:20

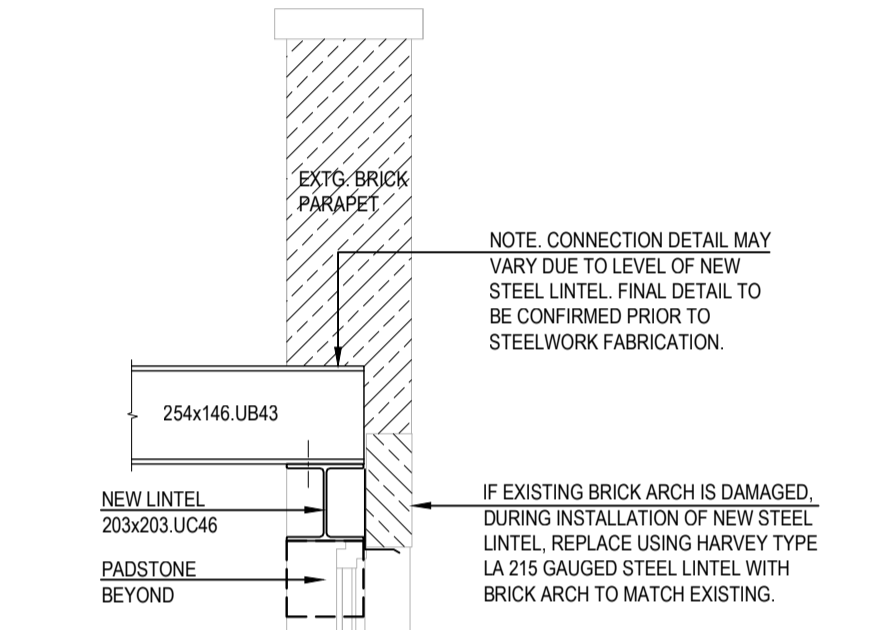


**FRAME TYPE 4**  
 1:20

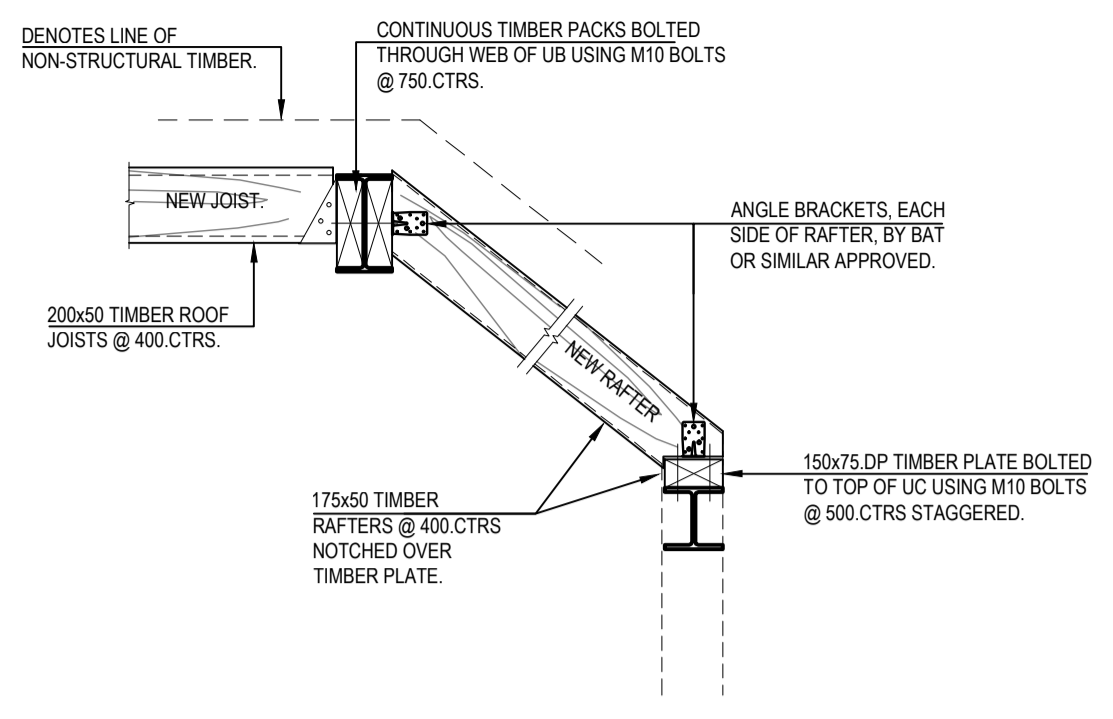
**NOTE:**  
 TIMBER RAFTERS / ROOF JOISTS  
 TO BE 175x50 & 200x50 TIMBERS  
 @ 400.CTRS UNLESS NOTED  
 OTHERWISE.



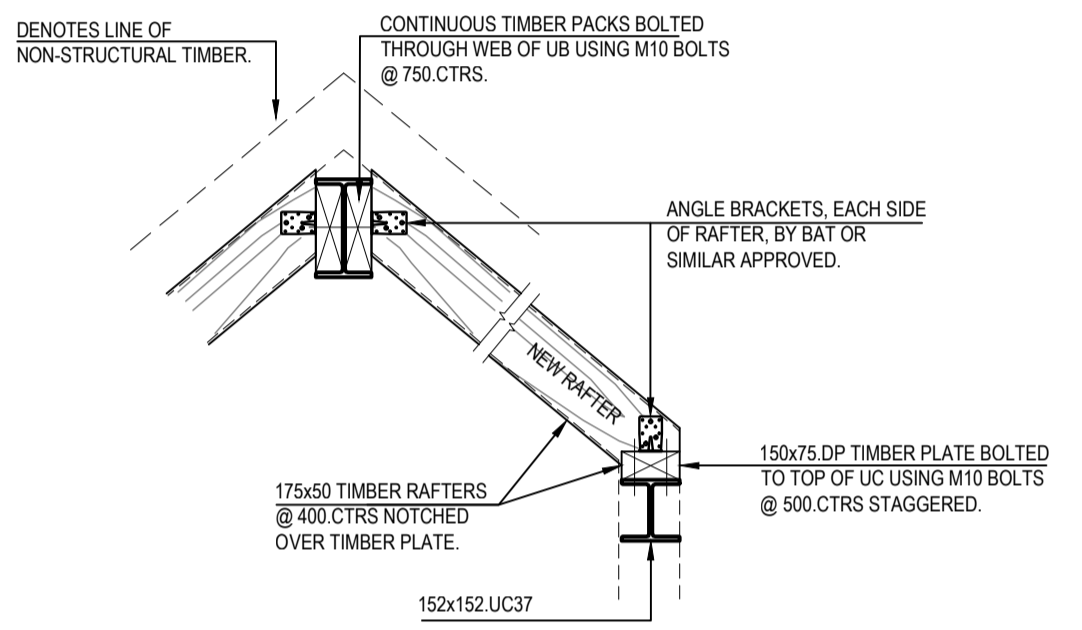
**NON-STRUCTURAL  
 TIMBER FIXING DETAIL**  
 1:20



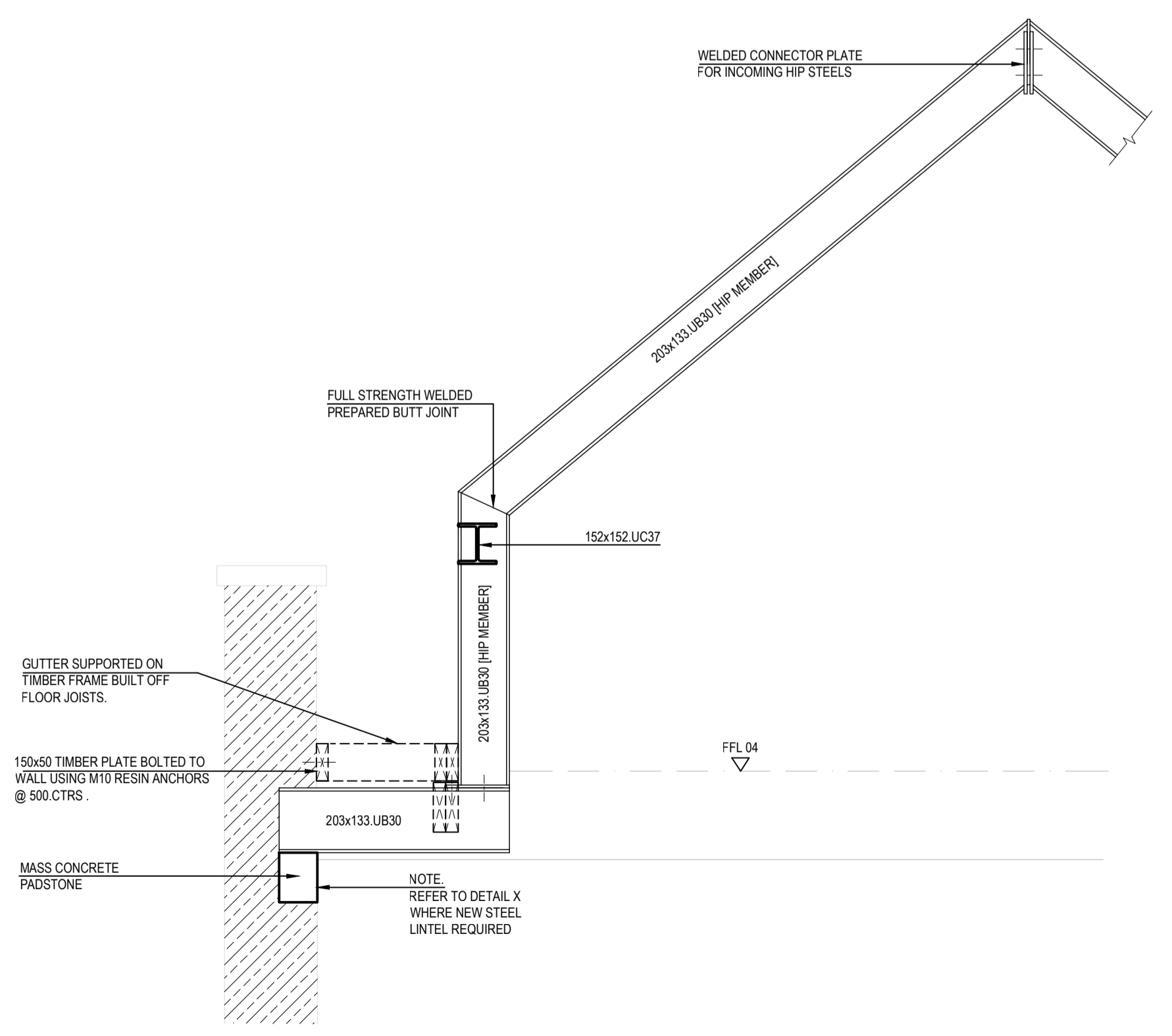
**DETAIL X  
 ALTERNATIVE FRAME END BEARING  
 DETAIL, FRAMES 3 & 4, WHERE NEW STEEL  
 LINTEL REQUIRED OVER WINDOWS UNDER.**  
 1:20



**FRAME TYPE 3  
 TIMBER DETAILS**  
 1:20



**FRAME TYPE 4  
 TIMBER DETAILS**  
 1:20



**HIP MEMBER DETAIL**  
 1:20

ISSUE/REVISION		
C1	09.08.2019	CONSTRUCTION ISSUE
I/R	DATE	DESCRIPTION

**KEY PLAN**

This drawing has been prepared for the use of AECOM's client. It may not be used, modified, reproduced or relied upon by third parties, except as agreed by AECOM or as required by law. AECOM accepts no responsibility, and denies any liability, whatsoever, to any party that uses or relies on this drawing without AECOM's express written consent. Do not scale this document. All measurements must be obtained from the stated dimensions.