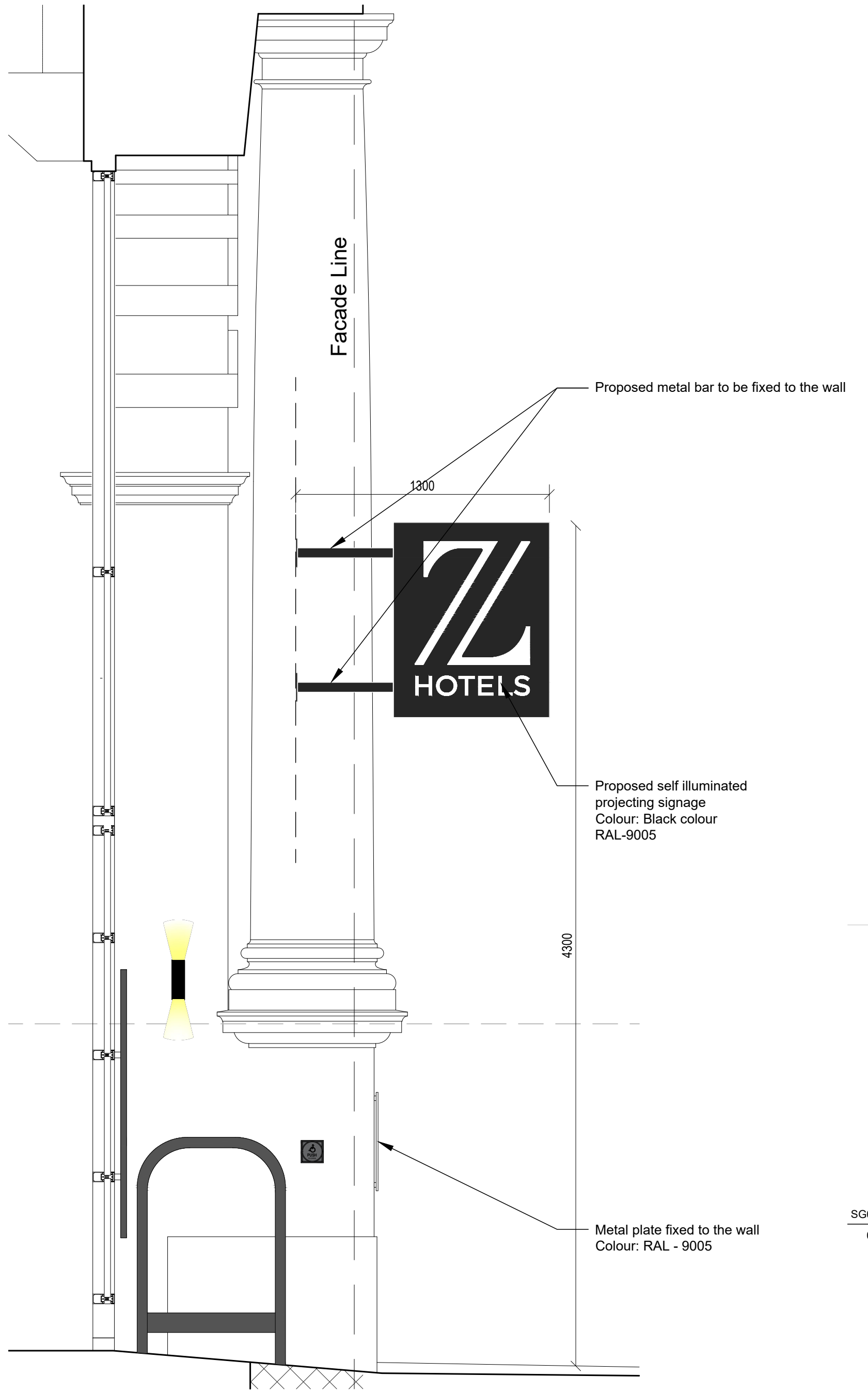
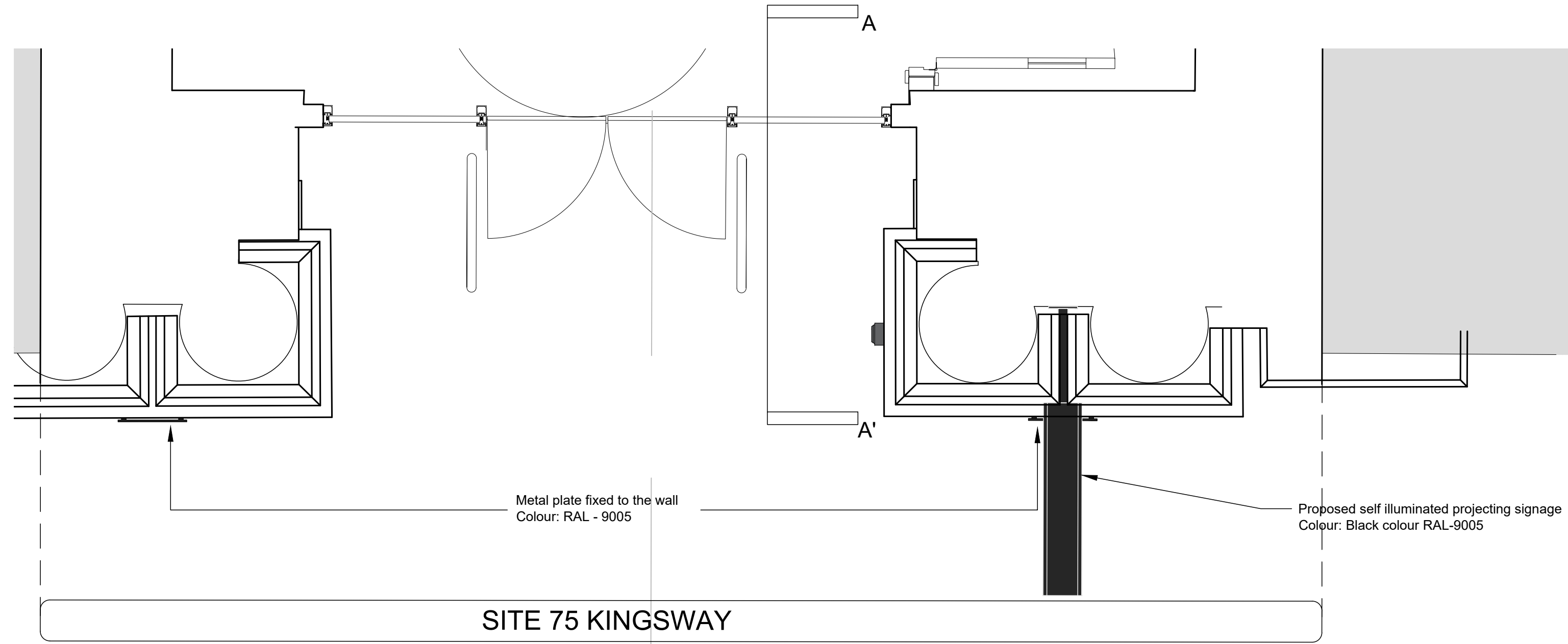
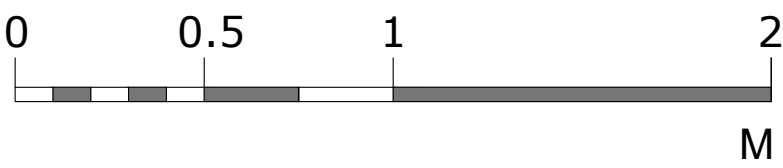


SG01 | Signage: Proposed Kingsway Signage  
01 | Existing detailed section AA' scale 1/20)



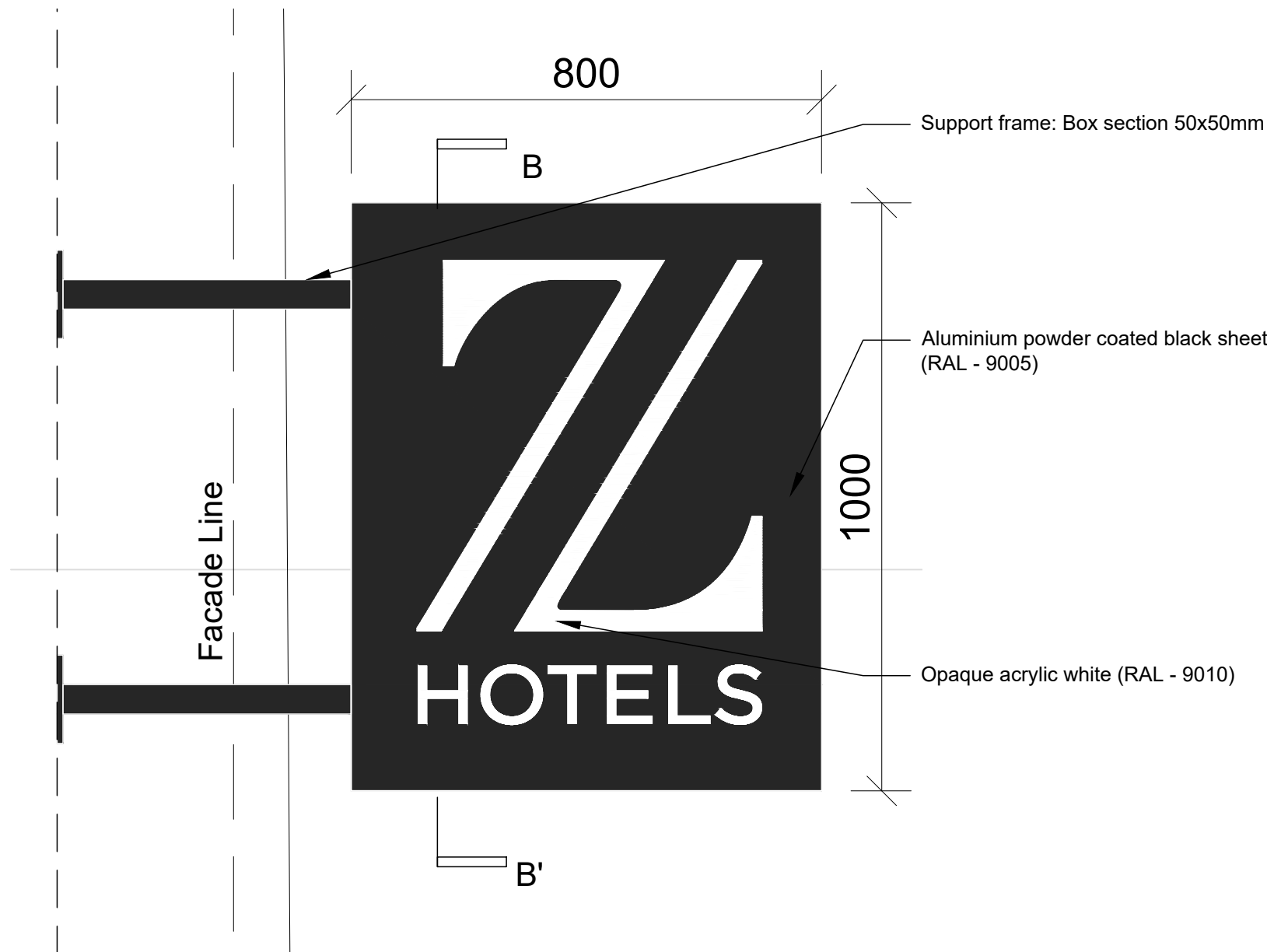
SG01 | Signage: Proposed Kingsway Signage  
02 | Proposed detailed section AA' scale 1/20)



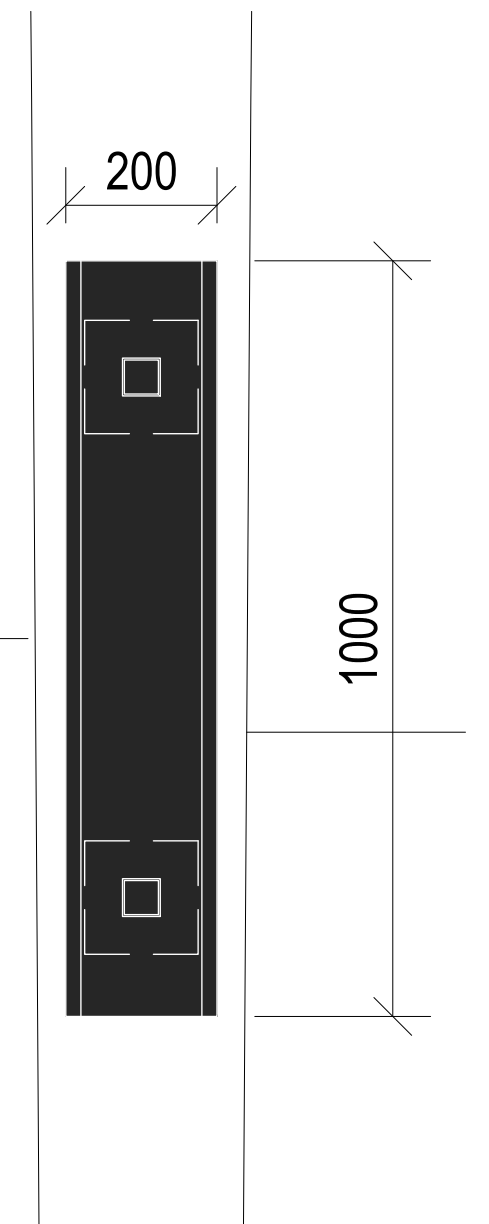
SG01 | Signage: Proposed Kingsway Signage  
04 | Detailed plan (scale 1/20)



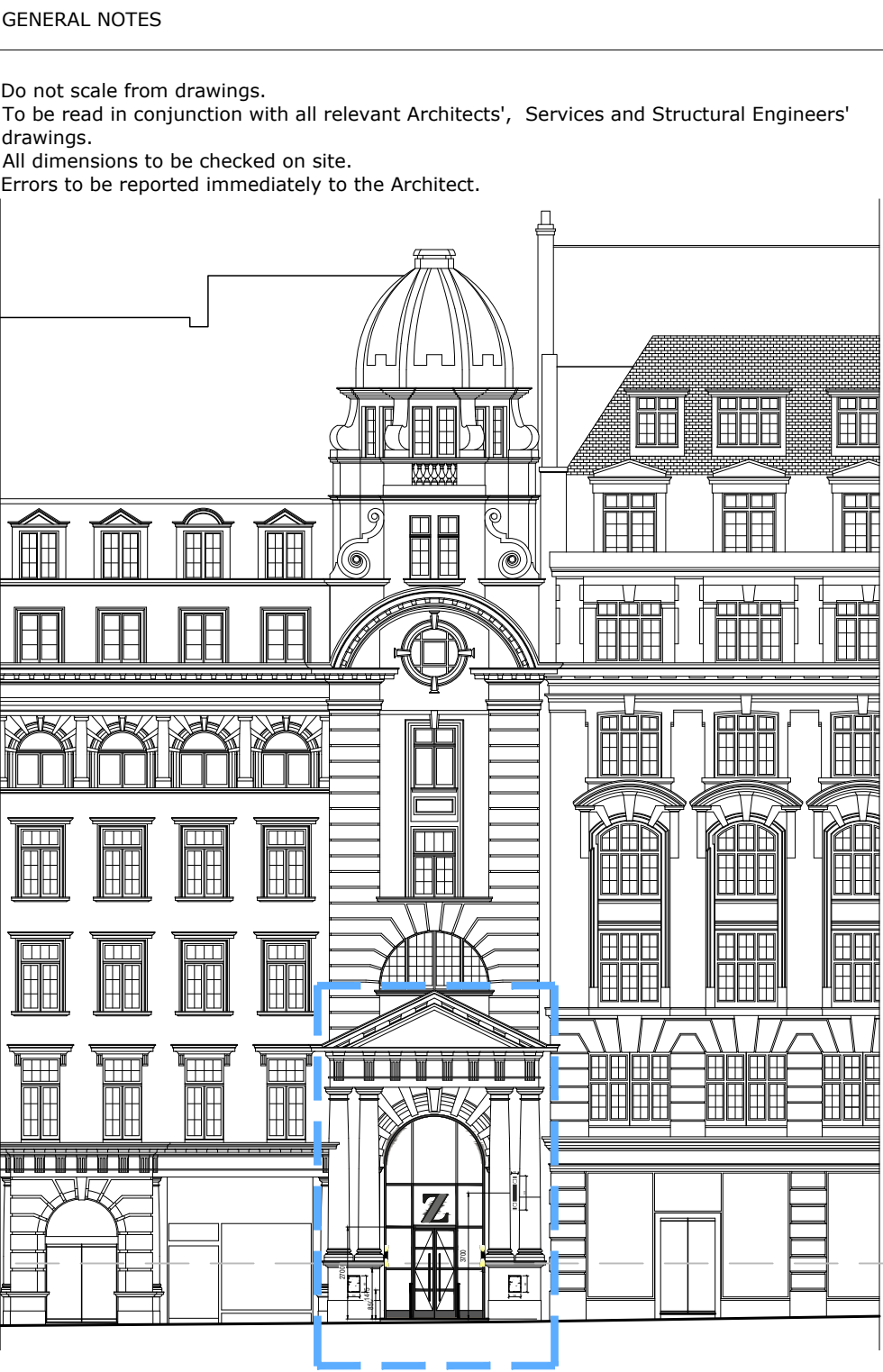
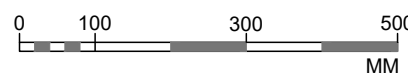
Self illuminated projecting metal signage reference



SG01 | Signage: Proposed Kingsway Signage  
03 | Signage elevation (scale 1/10)



SG01 | Signage: Proposed Kingsway Entrance  
05 | Signage Section BB' (scale 1/10)



SG01 | Signage: Kingsway Signage  
04 | Main front elevation

P2	11.09.2019	Signage design amended	PA	PA
P1	01.05.2019	For Planning	AG	PA
Rev.	Date	Description	DB	CB

## TT Architects

2 Eustace House  
Old Paradise Street  
London, SE11 6AN

### Project

Z-WILD COURT  
4 Wild Court & 75 Kingsway  
London  
WC2B 4AU

### Client

Z Hotels

### Drawing Name

Signage: Proposed Kingsway Signage  
Detailed Elevation

### Date

20.03.2019

### Issue

For Planning

### Scale

1:100 @ A1

### Drawn/Checked

PA/PA

### Drawing No. & Revision

005-SG01-P2