

Appendix AF-1

Photographs of unauthorised works to the Building, 101 Brecknock
Road. Photographs taken in February and August 2019



Image 1. The Building. Photograph of the Brecknock Road elevation.



Image 2. The Building. Photograph of the Torriano Avenue elevation



Image 3. The Building. Photograph of the Building.



Image 4. The Building. Photograph showing the prominence of the building adjacent contemporary terrace houses.



Lettering Modern typeface; shiny material.

Door sensor Sensor above the door.

Door Uncharacteristic modern door; recess has been removed. The internal lobby and associated internal doors have been removed.

Step Traditional stone step has been removed.

Image 5. Splayed Corner Elevation



Lettering Modern typeface, shiny material.

Panels have been inserted above openings.

Vinyl graphics applied to the window glass.

Traditional **step** removed.

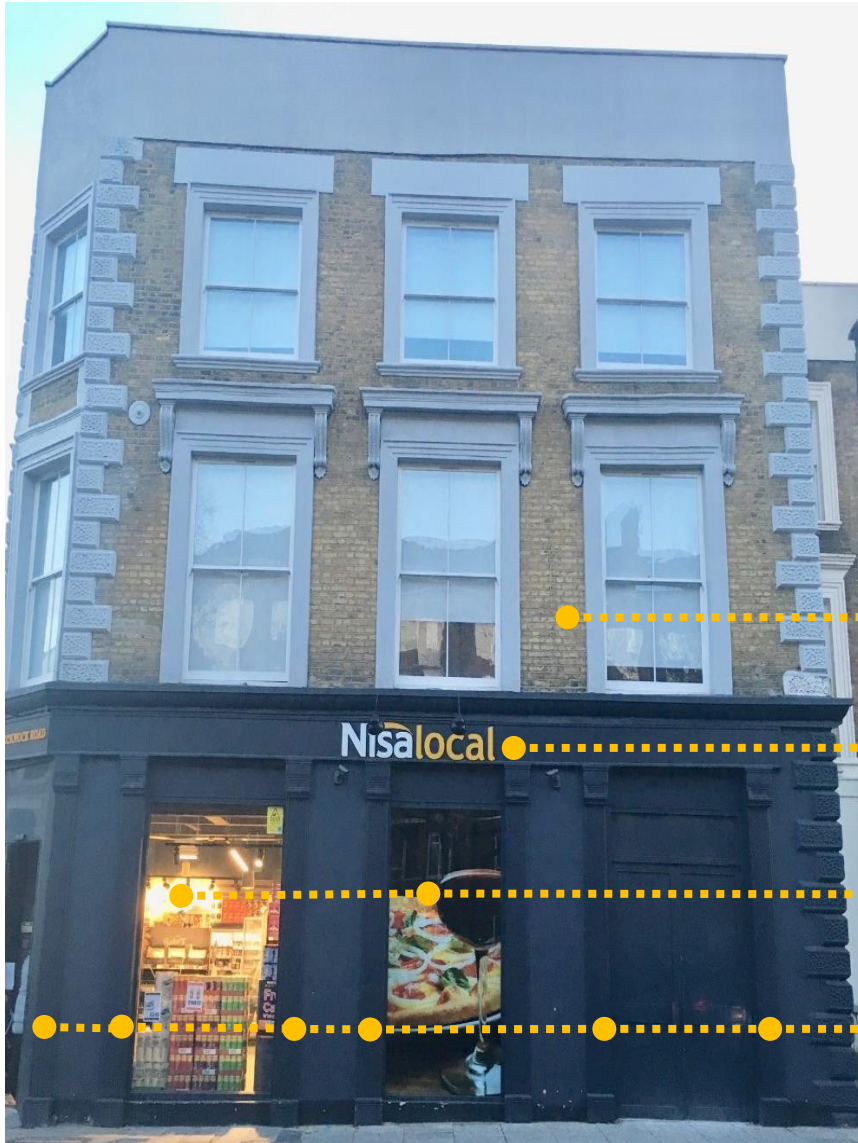
Image 6. Torriano Avenue Elevation



Window openings have been enlarged; **stall risers** and **ledges** removed.

Loss of **door, fanlight**; door opening, **step** and **recess**.

Image 7. Torriano Avenue Elevation



Traditional **Hanging sign** has been removed.

Lettering Modern typeface, shiny material.

Window openings lowered; **stall risers** and **ledges** removed.

Re-arrangement of **pilasters**, plus an additional pilaster.

Image 8. Brecknock Road Elevation



Panels have been inserted above openings.

Vinyl graphics applied to the window glass.

Door, fanlight and **recess** removed.

Traditional **step** removed.

Image 9. Brecknock Road Elevation



Double doors - These doors are unsympathetic, and out of keeping with the traditional character.

Image 10. Brecknock Road Elevation