

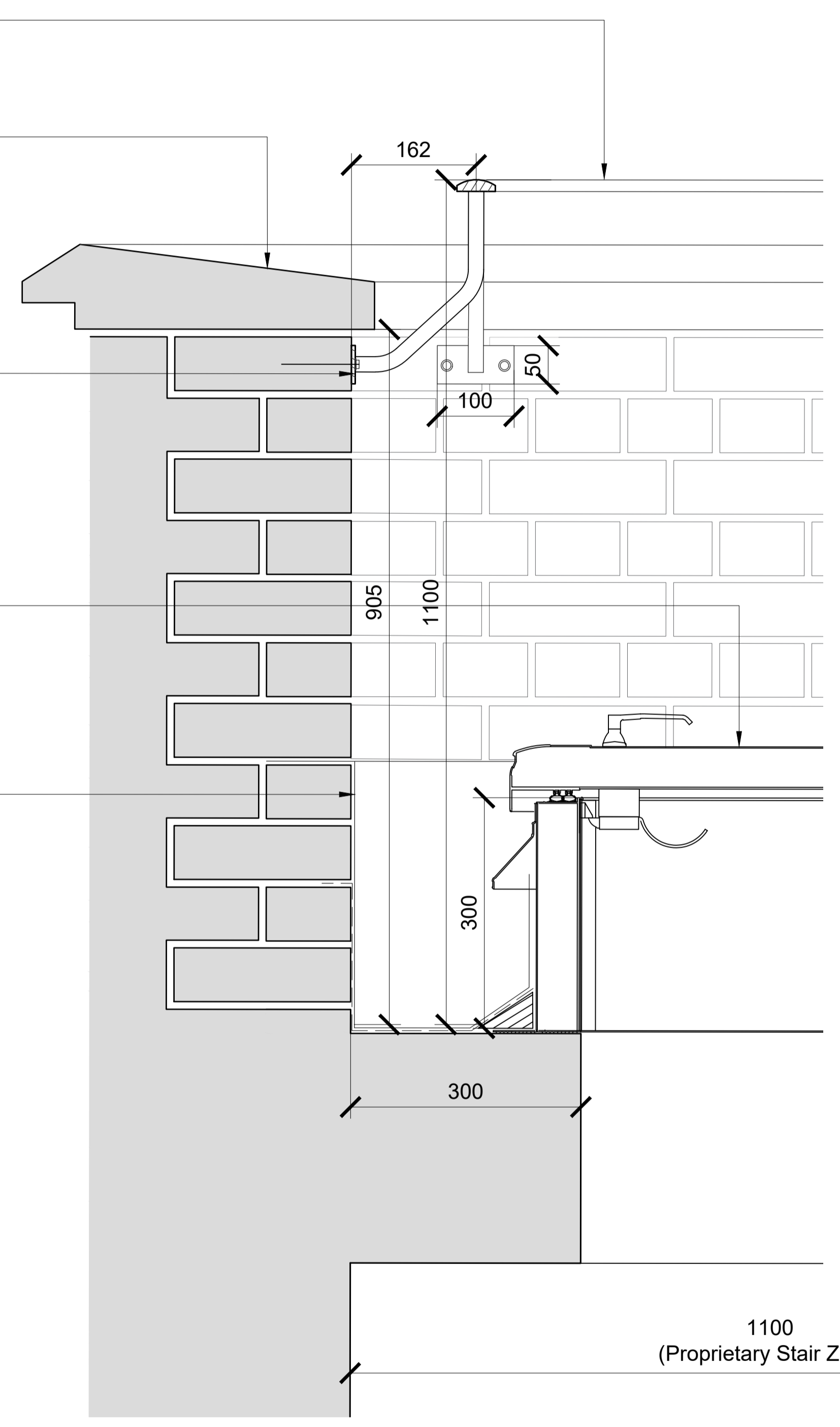
New metal balustrade to match existing language of building

Existing stone coping

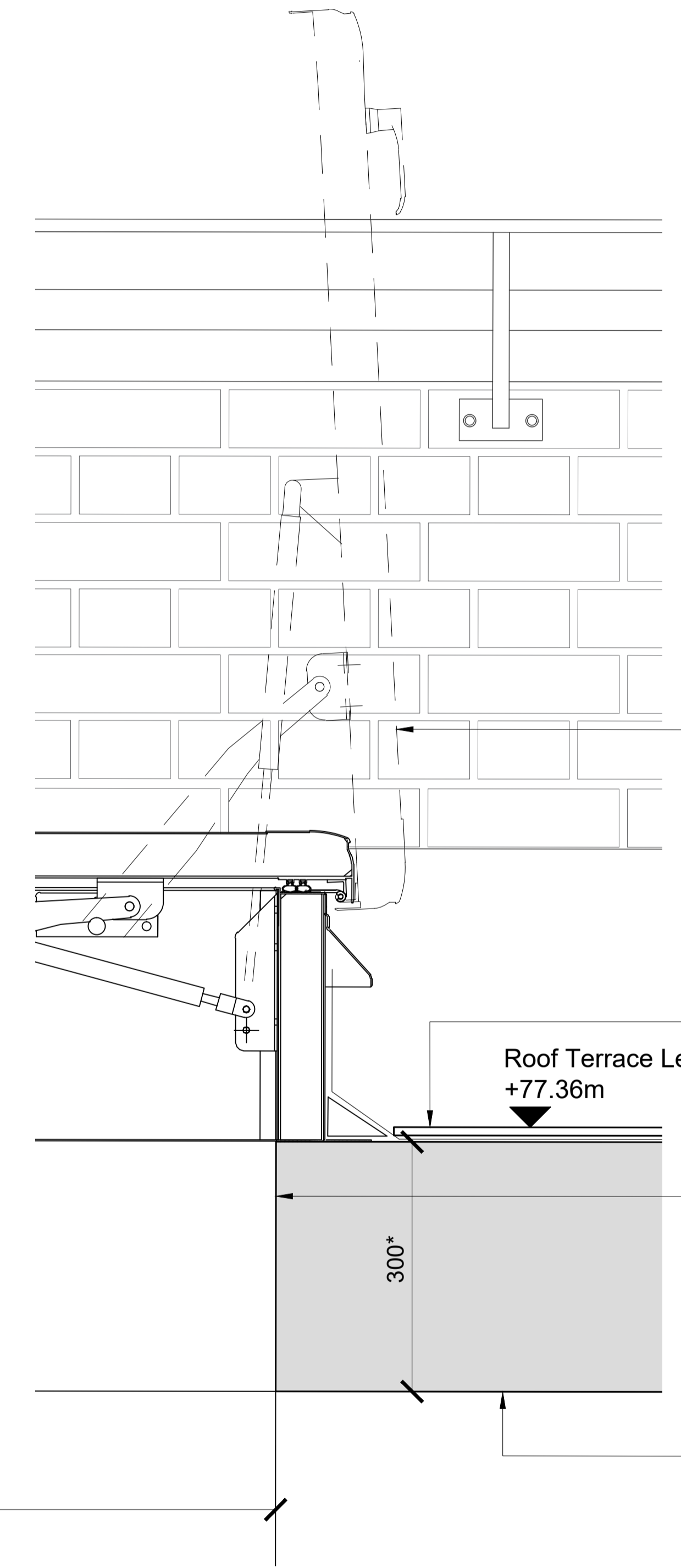
Balustrade steel base plate to match existing balustrade, and fix into brick parapet

New roof access hatch with manual handle operation

Lead apron to match existing condition and height



1 - Roof Terrace Balustrade and Access Hatch Detail



2 - Roof Terrace Access Hatch Detail

Roof access hatch in open position provides edge protection

New external tiles

Roof Terrace Level +77.36m

New concrete opening painted white

Existing concrete soffit painted white

Revisions		Revisions									
Rev	Date	By	Description	Checked	Approved	Rev	Date	By	Description	Checked	Approved
P1	25.07.18	RB	Issue for Comment	JM	RH						

A1

\*Based on site measurements taken 13.04.18:  
Roof: 300mm

Architect / Originator: <b>Tate Harmer</b>	Unit G182, Stamford Works, 3, Gillet Street, London N16 6JH Tel: +44 (0)207 241 7481 Email: studio@tateharmer.com	Do not scale. All dimensions to be checked on site. This drawing is copyright.
Client: <b>Platinum Land</b>	8 Querpel House, 1 Duke of York Square Kings Road, London, SW3 4LY	Date of Origin: 28.11.17
Project: <b>Belsize Park Firestation</b>		Drawn By: ABF
Drawing Title: <b>Tower Unit Roof Access and Balustrade Details</b>		Scale: 1:5
Client Sign Off:	Drawing Number: <b>BFS THA PR AL 616 P1</b>	Drawing Status: Planning