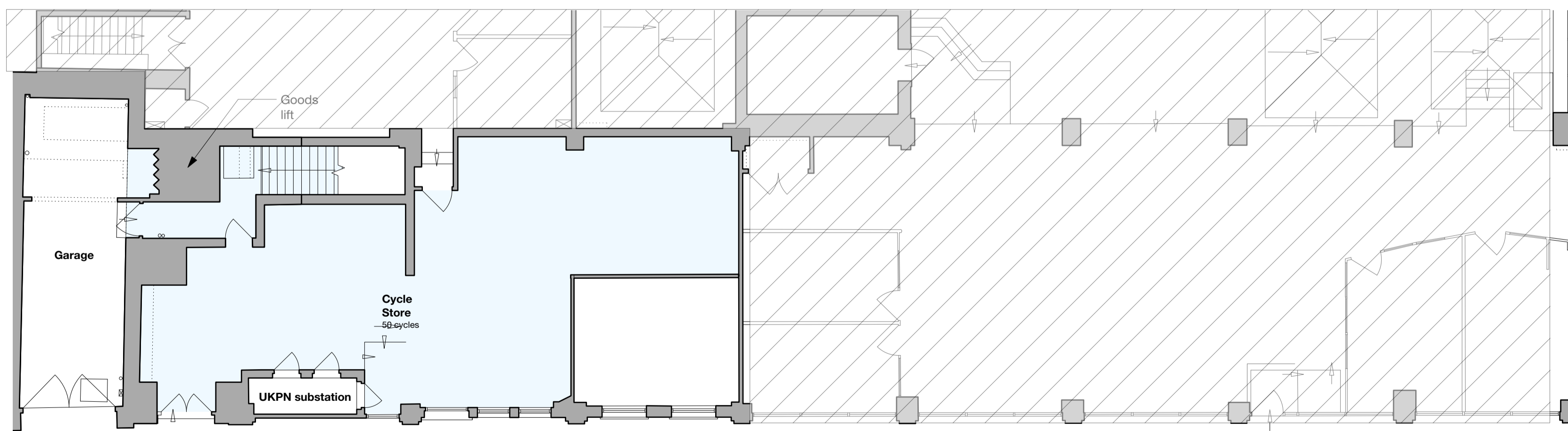


High Holborn House

1 High Holborn House Existing Basement  
Scale: 1:100

High Holborn House  
PHASE 2 WORKS



2 High Holborn House Existing Ground Floor  
Scale: 1:100

**GENERAL NOTES:**

All dimensions to be checked on site prior to commencement of any works, and/or preparation of any shop drawings.

Sizes of and dimensions to any structural elements are indicative only. See structural engineers drawings for actual sizes / dimensions.

Sizes of and dimensions to any service elements are indicative only. See service engineers drawings for actual sizes and dimensions.

This drawing to be read in conjunction with all other Architect's drawings, specifications and other Consultants' information.

All proprietary systems shown on this drawing are to be installed strictly in accordance with the Manufacturers/Suppliers recommended details.

Any discrepancies between information shown on this drawing and any other contract information or manufacturers/suppliers recommendations is to be brought to the attention of the Architect

DO NOT SCALE FROM THIS DRAWING.

**NOTES:**

**AREA USE KEY:**

- Outside of scope
- Office
- Leisure

REVISION	DATE
<b>Buckley Gray Yeoman</b> Studio 4.04 The Tea Building 56 Shoreditch High Street London E1 6JJ T: 020 7033 9913 F: 020 7033 9914	
<b>CLIENT</b> SRG Holborn Limited	
<b>PROJECT</b> High Holborn House	
<b>DRAWING</b> High Holborn House Existing Ground & Basement Floor Plans	
<b>SCALE</b> 1:100 @ A1 (1:200 @ A3)	
<b>DATE</b> July 2019	<b>DRAWN BY</b> JR
<b>DWG No.</b> 975_HHH-EX-00	<b>REVISION</b> PL
<b>DRAWING STATUS</b> PLANNING	



Information contained on this drawing is the sole copyright of Buckley Gray Yeoman and is not to be reproduced without their permission.