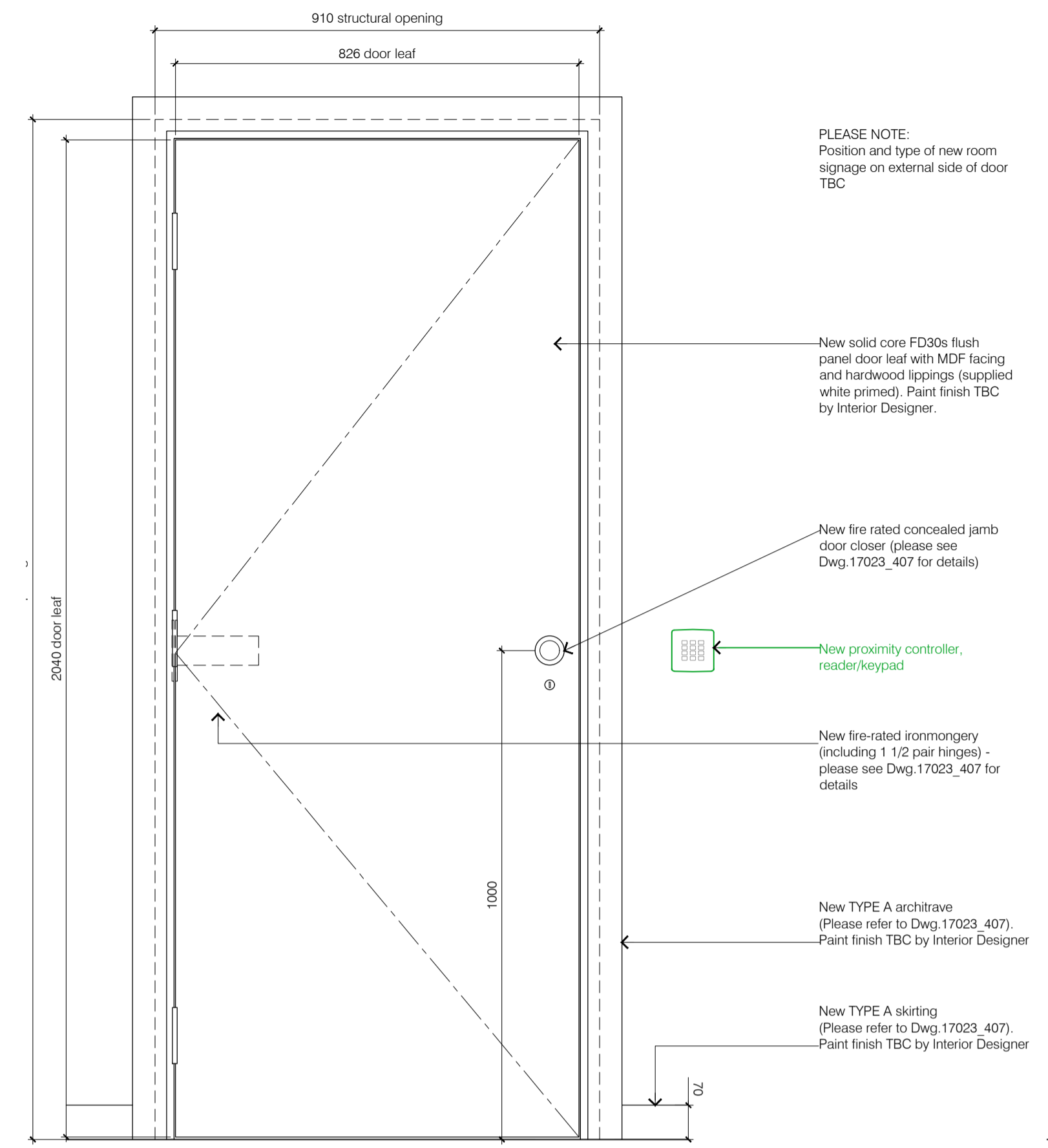


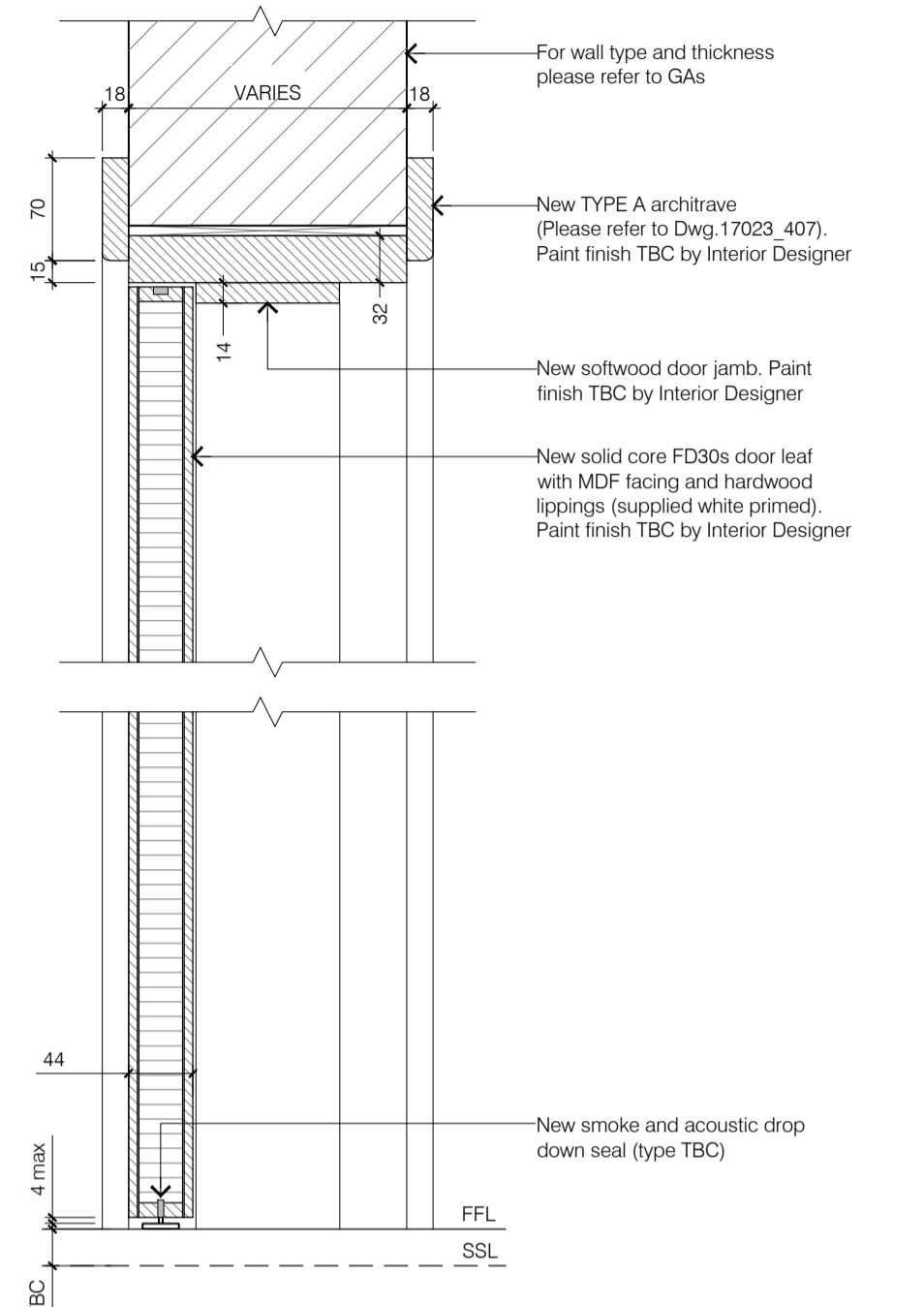
NOTE :  
TO BE READ IN CONJUNCTION WITH Dwg. 17023\_407

### DOOR TYPE 2a

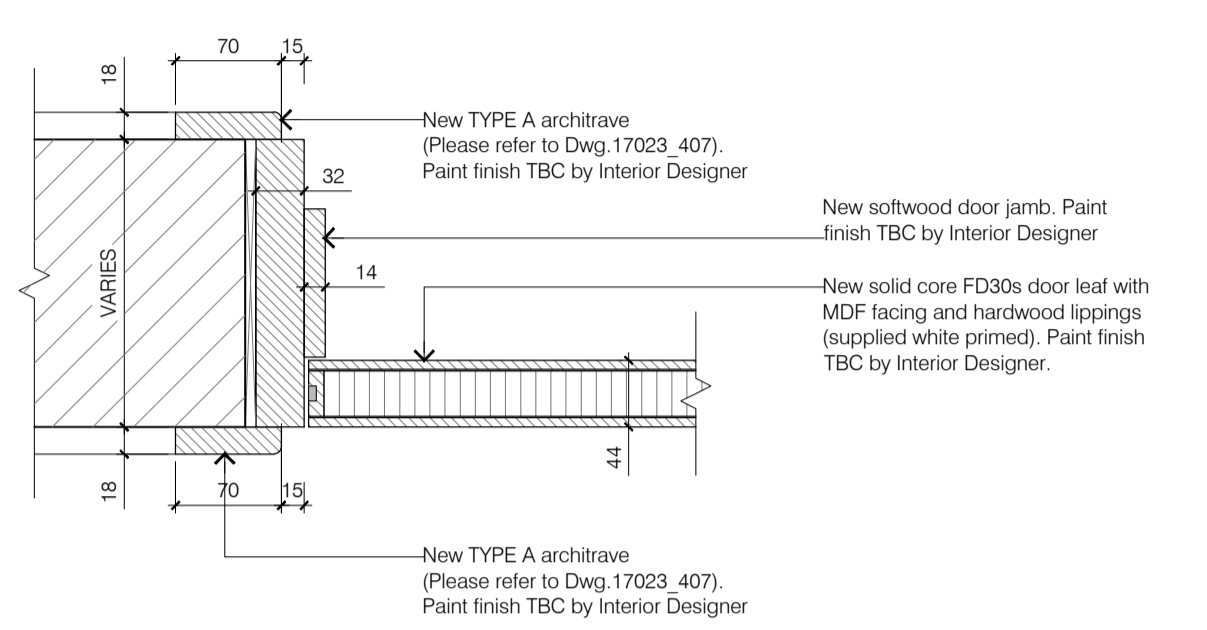
(LOCATION : Basement & 4th Floor)  
NEW 826 x 2040mm solid core, square-edge, flush panel unit entrance door - hinged single leaf (FD30s) (NOTE: CONTRACTOR'S CHOICE)  
DB.02, DB.05, DB.08, DB.24  
D4.01, D4.02, D4.03, D4.04, D4.05, D4.06



01 DOOR TYPE 2a - Elevation  
1:10 @ A1 / 1:20 @ A3



02 DOOR TYPE 2a - Head and Threshold Detail  
1:5 @ A1 / 1:10 @ A3



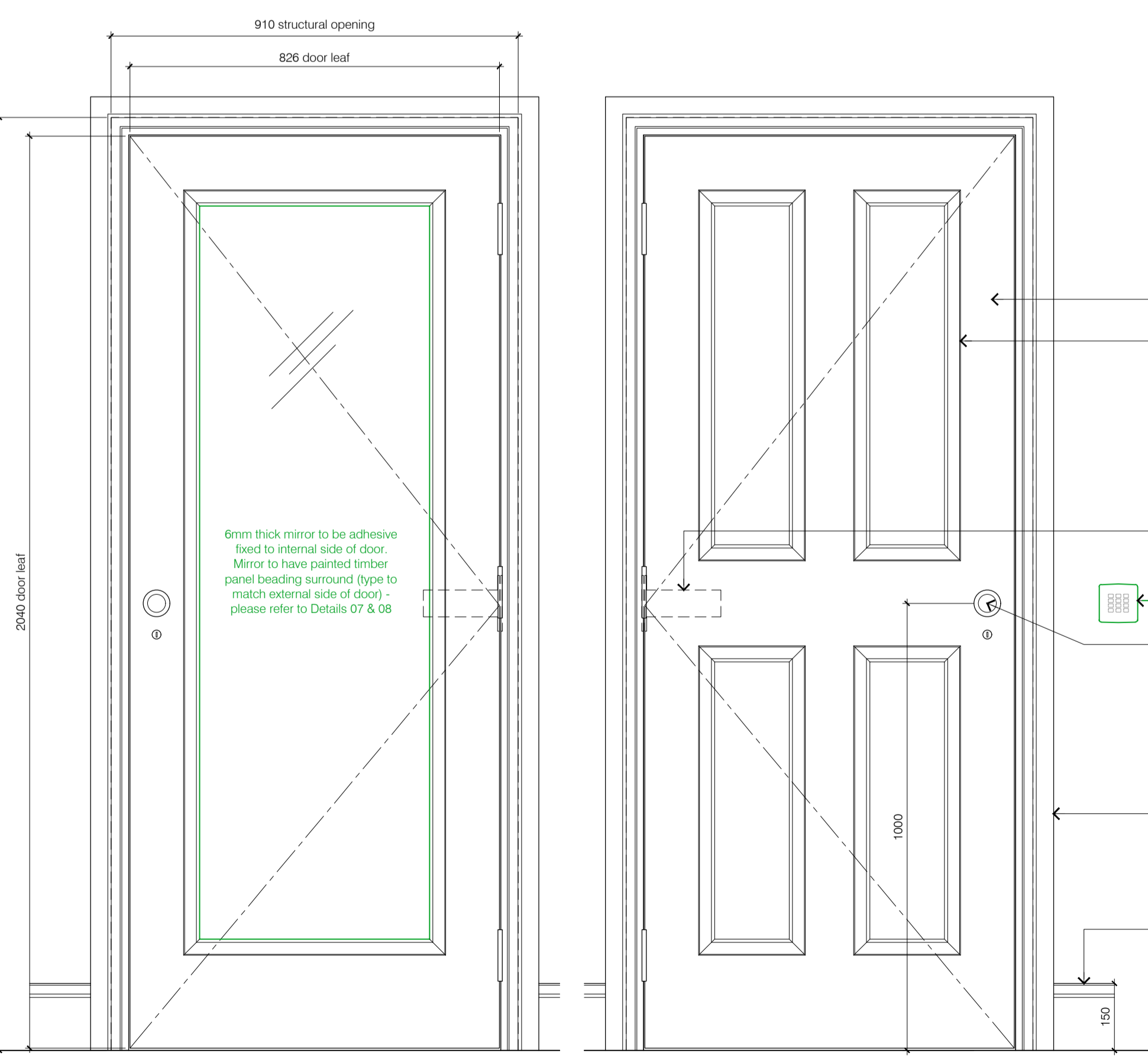
03 DOOR TYPE 2a - Jamb Detail  
1:5 @ A1 / 1:10 @ A3

### DOOR TYPE 2b

(LOCATION : Ground & 1st Floor)  
NEW 826 x 2040mm solid core, square-edge, flush panel unit entrance door adapted to create 4 panel effect (to both sides) - hinged single leaf (FD30s) (NOTE: CONTRACTOR'S CHOICE)  
D1.01

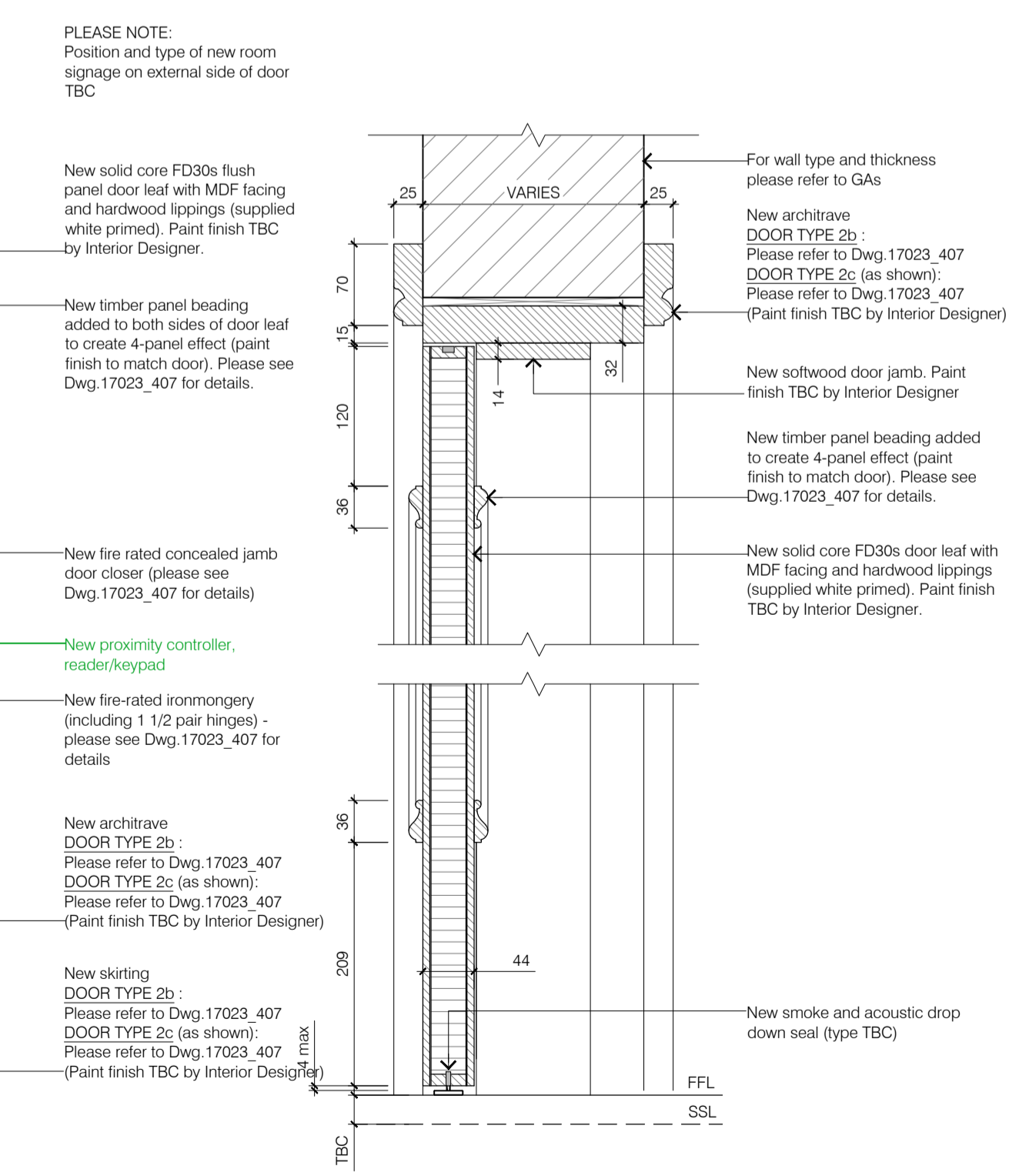
### DOOR TYPE 2c

(LOCATION : 2nd & 3rd Floor)  
NEW 826 x 2040mm solid core, square-edge, flush panel unit entrance door adapted to create 4 panel effect (to both sides) - hinged single leaf (FD30s) (NOTE: CONTRACTOR'S CHOICE)  
D2.01, D2.18  
D3.01, D3.05, D3.06, D3.08

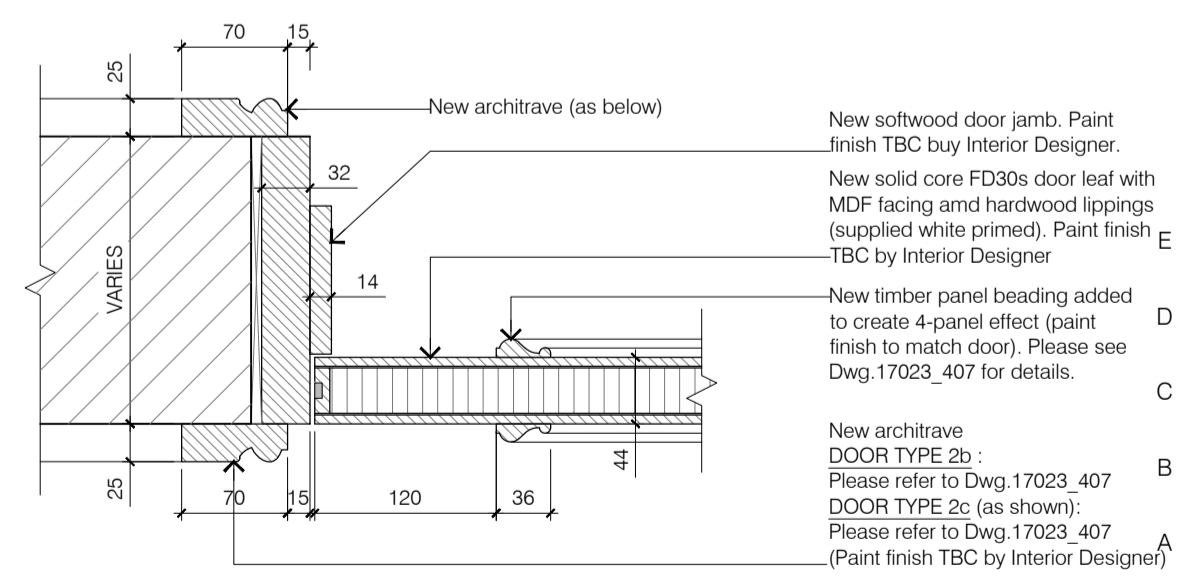


04 DOOR TYPE 2b & 2c - Internal Elevation  
1:10 @ A1 / 1:20 @ A3

05 DOOR TYPE 2b & 2c - External Elevation  
1:10 @ A1 / 1:20 @ A3



06 DOOR TYPE 2b & 2c - Head and Threshold Detail  
1:5 @ A1 / 1:10 @ A3



07 DOOR TYPE 2b & 2c - Jamb Detail  
1:5 @ A1 / 1:10 @ A3

rev	date	drawn	checked	description
E	2019.08.23	DB	LG	Drawing number updated. Issued for Planning
D	2019.08.16	DB	LG	Issued for Planning
C	2019.06.03	DB	LG	Final construction issue - general revision
B	2018.10.24	LW		Handle heights and panelling updated. Spynoles removed and internal elevation of door type 2b&2c added
A	2018.06.26	LW		Door number DB.24 added to Door Type 2a

modulor studio  
5a Iliffe Yard  
London, SE17 3QA  
t: +44 (0)20 7193 1717  
e: www.modulor-studio.co.uk

client: Vernor Hse, 5-8 Mark's Sq, NW1 7TN  
drawing title: Internal Door Details - TYPE 2a, 2b & 2c  
scale: 1:5 @ A1 / 1:10 @ A3