


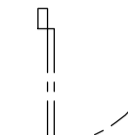

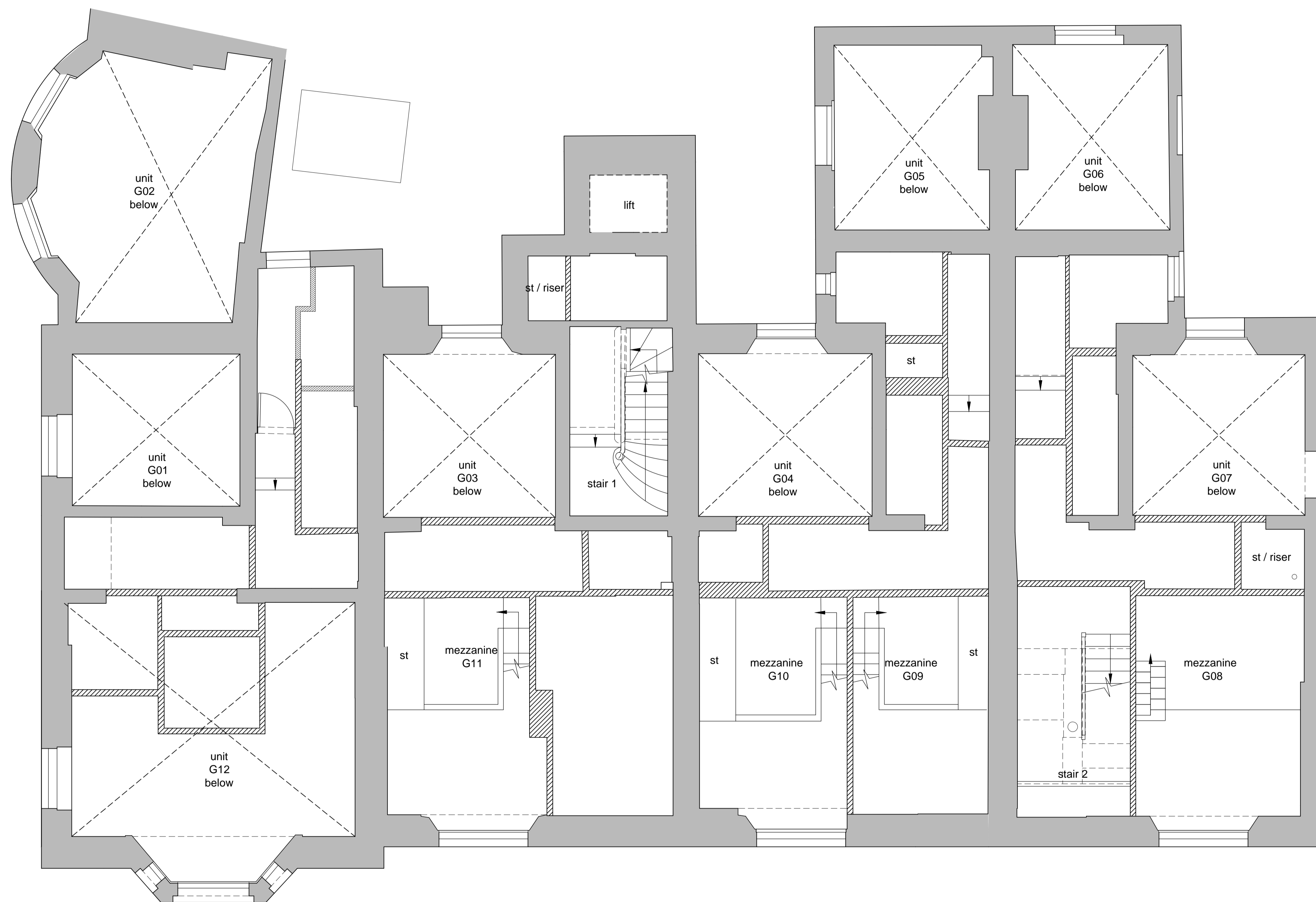


KEY:

-  Existing original walls to be retained
-  Existing modern fabric to be retained
-  New internal walls/floors
-  New doors
-  Revision cloud- indicating changes



rev	date	drawn	checked	description
E	2019.08.30	LG		Minor revision.
D	2019.08.23	cb	lg	Name updated. Issued for Planning
C	2019.08.16	cb	lg	Issued for Planning
B	2018.06.25	cb	lg	minor revision
A	2018.03.27	cb	lg	minor changes

01 Approved ground floor mezzanine plan
1:50 @ A1 / 1:100 @ A3



modular studio
5a Iliffe Yard
London. SE17 3QA
t: +44 (0)20 7193 1717
e: www.modular-studio.co.uk

client:

project address:

Vernon Hse, 5-8 St.Marks Sq, NW1 7TN



Approved Ground Floor Mezzanine Plan

scale:
1:50 @ A1 / 1:100 @ A3

job no.

dwg no.

revision

17023PL1 110_1 E