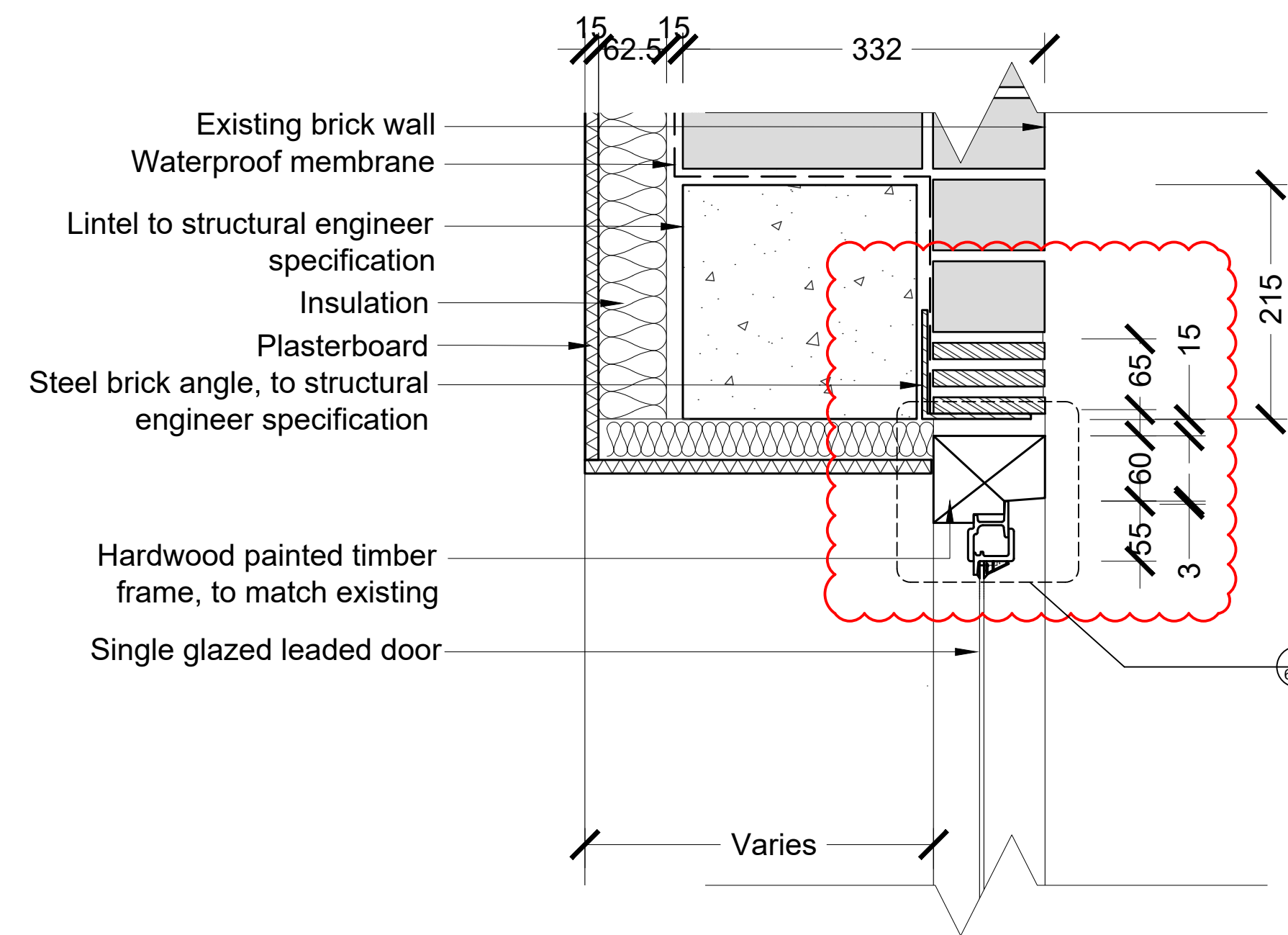


1 - DOOR HEAD DETAIL

PROPOSED BUILDING CONDITIONS

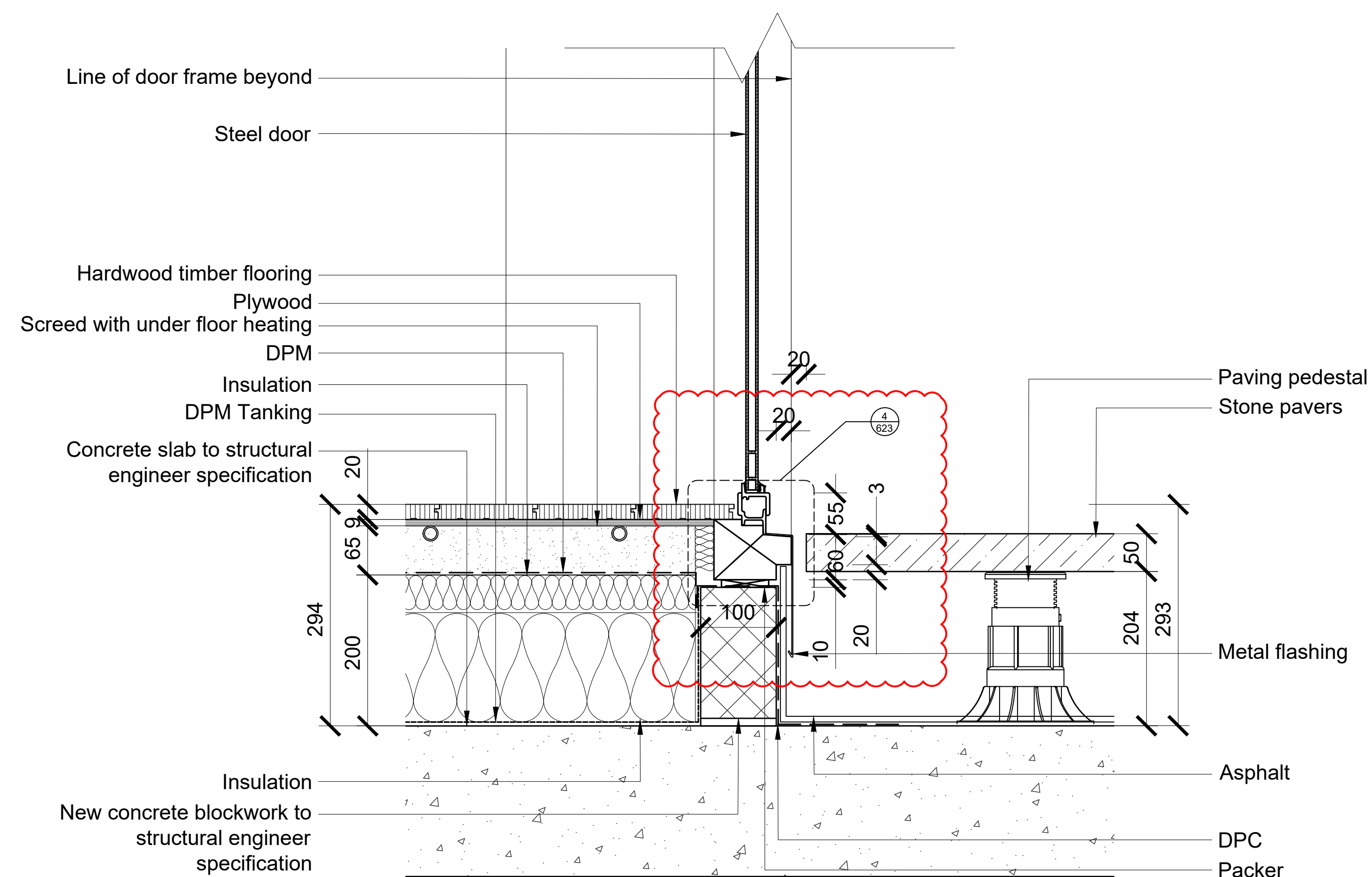


2 - DOOR HEAD DETAIL

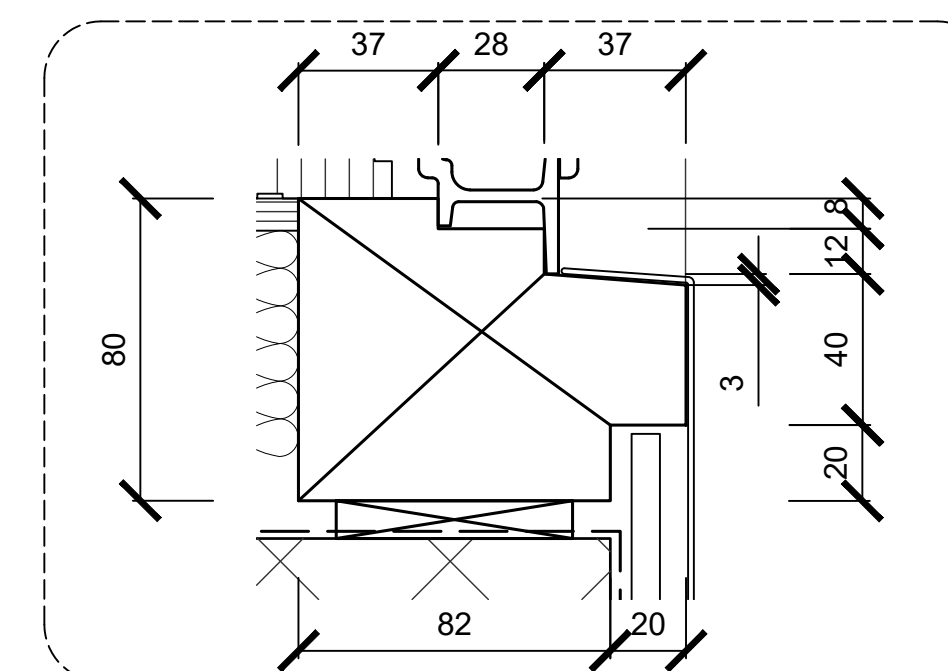
EXISTING BUILDING CONDITIONS

List of changes:

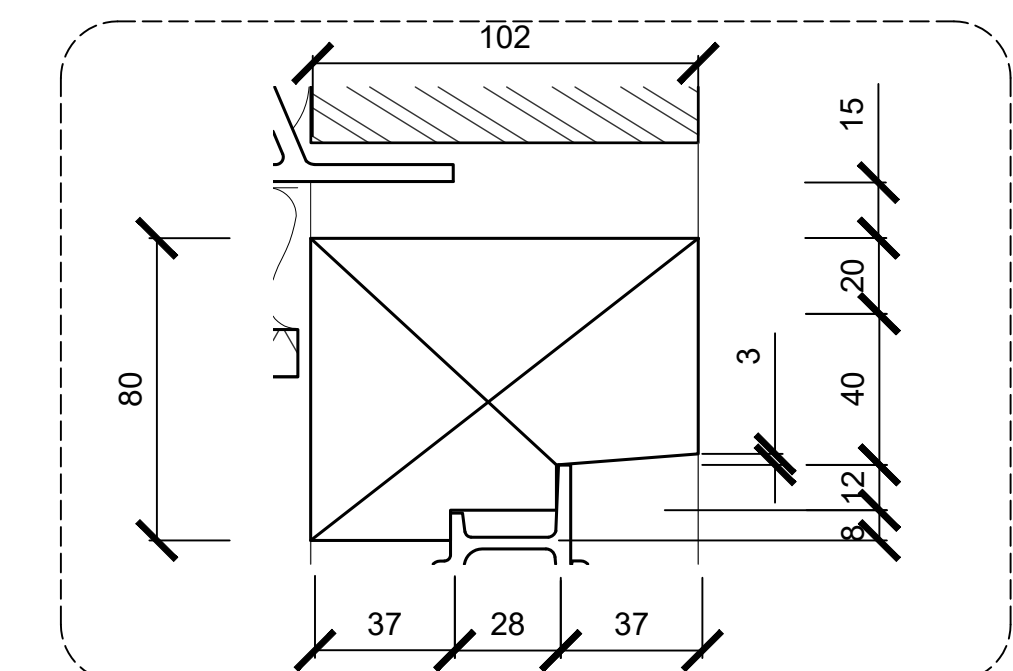
- Door frame profile update



3 - DOOR SILL DETAIL EXISTING/NEW BUILD CONDITIONS



4 - SILL PROFILE DIMENSIONS
1:2 @ A1



5 - HEAD PROFILE DIMENSIONS
1:2 @ A1

Paper size	Revisions						Revisions					
	Rev	Date	By	Description	Checked	Approved	Rev	Date	By	Description	Checked	Approved
A1 A3	P1	23.03.18	RB	Planning Conditions Discharge	JM	RH						
	P2	31.08.18	RB	Planning Amendments	JM	RH						
	P3	12.09.18	TS	Planning Amendments	JM	RH						
	P4	04.10.18	TS	Window Glazing Amendment	JM	RH						
	P5	27.02.19	TS	Sill and Frame Amendment	JM	RH						
	P6	06.06.19	QJ	NMA Re-Issue	ABF	RH						
	P7	13.06.19	QJ	NMA Re-Issue - Rev Cloud Updates	RB	RH						

Client Sign Off	Architect / Originator Tate Harmer	Unit G162, Stamford Works, 3 Gillett Street, London N16 8JH Tel: +44 (0)207 241 7481 E-mail: studio@tateharmer.com	Do not scale. All dimensions to be checked on site. This drawing is copyright.
	Client: Platinum Land	8 Querpul House, 1 Duke of York Square, Kings Road, London, SW3 4LY	
	Project: Belsize Park Firestation		Date of Origin: 23.11.17 Drawn By: TS
	Drawing Title: TYPICAL DOOR SECTION DETAILS		Scale: 1:5 Drawing Status: FOR LENDING